

DISTRICT I  
1825 N. French Dr., Hobbs, NM 88240  
Phone (575) 393-8161 Fax: (575) 393-0720

DISTRICT II  
811 S. First St., Artesia, NM 88210  
Phone (575) 748-1263 Fax: (575) 748-9720

DISTRICT III  
1000 Rio Brazos Rd., Aztec, NM 87410  
Phone (505) 334-8176 Fax: (505) 334-8170

DISTRICT IV  
1220 S. St. Francis Dr., Santa Fe, NM 87505  
Phone (505) 478-3480 Fax: (505) 478-3482

State of New Mexico  
Energy, Minerals and Natural Resources Department

Form C-102  
Revised August 4, 2011

Submit one copy to appropriate  
District Office

OIL CONSERVATION DIVISION  
1220 South St. Francis Dr.  
Santa Fe, New Mexico 87505

**OCD - HOBBS**  
**11/18/2020**  
**RECEIVED**

AMENDED REPORT

WELL LOCATION AND ACREAGE DEDICATION PLAT

API Number <b>30-025-47195</b>	Pool Code <b>97895</b>	Pool Name <b>WC-025 G-08 S213304D;BONE SPRING</b>
Property Code <b>328246</b>	Property Name <b>MARGARITA FEDERAL COM 13</b>	Well Number <b>1H</b>
OGRID No. <b>372417</b>	Operator Name <b>Advance Energy Partners Hat Mesa, LLC</b>	Elevation <b>3916'</b>

Surface Location

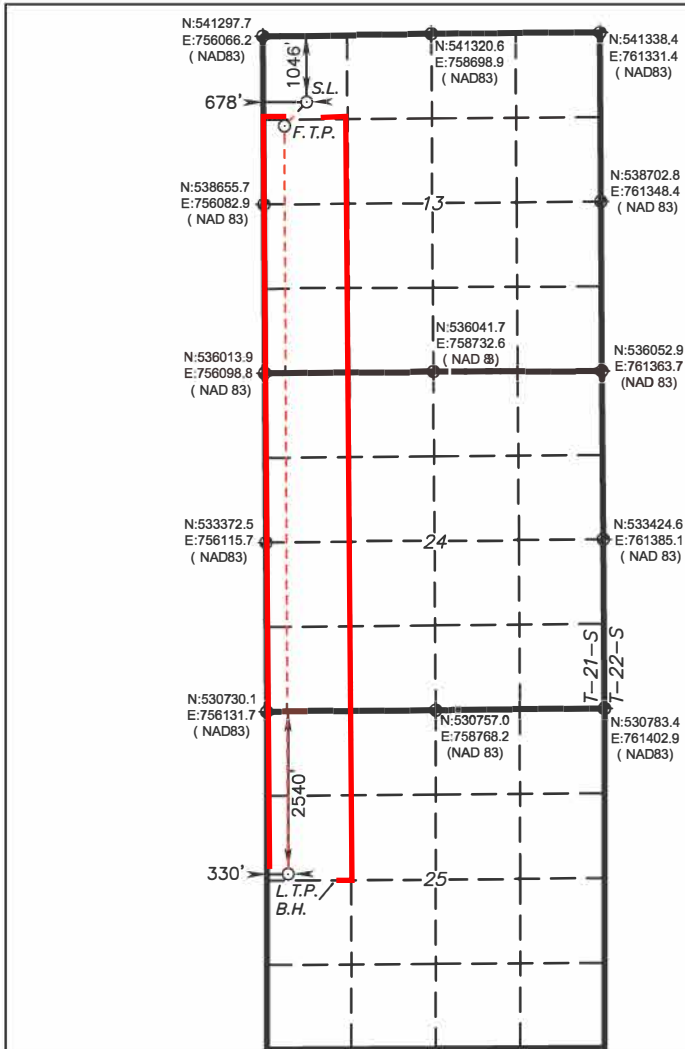
UL or lot No.	Section	Township	Range	Lot Idn	Feet from the	SOUTH/South line	Feet from the	East/West line	County
D	13	21 S	32 E		1046	NORTH	678	WEST	LEA

Bottom Hole Location If Different From Surface

UL or lot No.	Section	Township	Range	Lot Idn	Feet from the	SOUTH/South line	Feet from the	East/West line	County
E	25	21 S	32 E		2540	NORTH	330	WEST	LEA

Dedicated Acres <b>360.00</b>	Joint or Infill	Consolidation Code <b>C</b>	Order No.
----------------------------------	-----------------	--------------------------------	-----------

NO ALLOWABLE WILL BE ASSIGNED TO THIS COMPLETION UNTIL ALL INTERESTS HAVE BEEN CONSOLIDATED OR A NON-STANDARD UNIT HAS BEEN APPROVED BY THE DIVISION



**SURFACE LOCATION**  
Lat - N 32.483291°  
Long - W 103.634744°  
NMSPC - N 540257.6  
E 756750.5  
(NAD-83)

**FIRST TAKE POINT**  
**1420 FNL & 330 FWL**  
Lat - N 32.482262°  
Long - W 103.635873°  
NMSPC - N 539880.6  
E 756404.8  
(NAD-83)

**LAST TAKE POINT/**  
**BOTTOM HOLE**  
Lat - N 32.450137°  
Long - W 103.635934°  
NMSPC - N 528193.4  
E 756462.4  
(NAD-83)

OPERATOR CERTIFICATION

I hereby certify that the information contained herein is true and complete to the best of my knowledge and belief, and that this organization either owns a working interest or unLEASED mineral interest in the land including the proposed bottom hole location or has a right to drill this well at this location pursuant to a contract with an owner of such a mineral or working interest, or to a voluntary pooling agreement or a compulsory pooling order heretofore entered by the Division.

*Cory Walk* **11-18-20**  
Signature Date  
**Cory Walk**  
Printed Name  
**cory@permitswest.com**  
Email Address  
**505 466-8120**

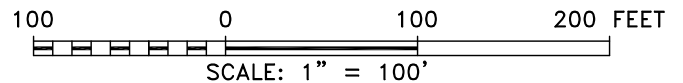
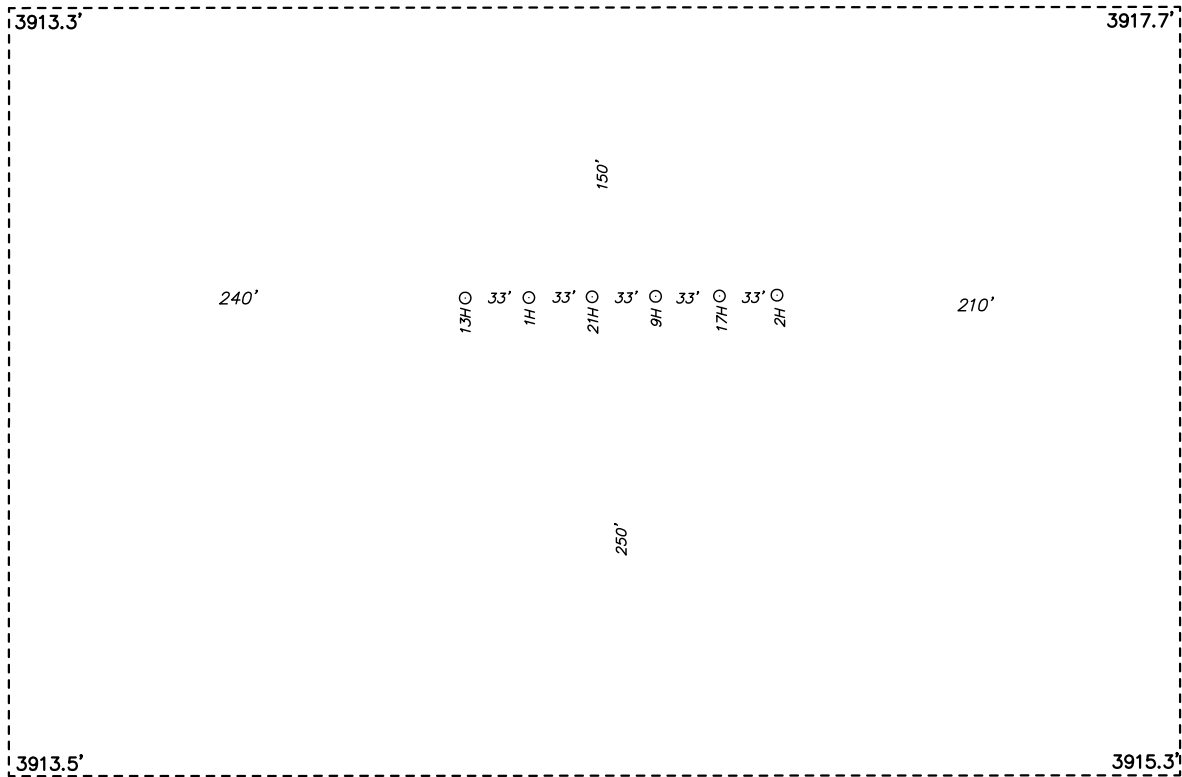
SURVEYOR CERTIFICATION

I hereby certify that the well location shown on this plat was plotted from field notes of actual surveys made by me or under my supervision, and that the same is true and correct to the best of my belief.

**MARCH 5, 2020**  
Date Surveyed  
Signature & Seal of Professional Surveyor  
Certificate No. **Gary L. Jones 7977**  
BASIN SURVEYS

0' 1500' 3000' 4500' 6000'  
SCALE: 1" = 3000'  
WO Num.: 35070

**SECTION 13, TOWNSHIP 21 SOUTH, RANGE 32 EAST. N.M.P.M.,  
LEA COUNTY, NEW MEXICO.**



**ADVANCE ENERGY PARTNERS HAT MESA**

REF: MARGARITA FEDERAL COM 1H / WELL PAD TOPO

THE MARGARITA FEDERAL COM 1H LOCATED 1046' FROM  
THE NORTH LINE AND 678' FROM THE WEST LINE OF  
SECTION 13, TOWNSHIP 21 SOUTH, RANGE 32 EAST.

N.M.P.M., LEA COUNTY, NEW MEXICO.



P.O. Box 1786 (575) 393-7316 - Office  
1120 N. West County Rd. (575) 392-2206 - Fax  
Hobbs, New Mexico 88241 basinsurveys.com