

District I
1625 N. French Dr., Hobbs, NM 88240
Phone: (505) 393-6161 Fax: (505) 393-0720

District II
811 S. First St., Artesia, NM 88210
Phone: (505) 748-1283 Fax: (505) 748-9720

District III
1000 Rio Brazos Road, Aztec, NM 87410
Phone: (505) 334-6178 Fax: (505) 334-6170

District IV
1220 S. St. Francis Dr., Santa Fe, NM 87505
Phone: (505) 476-3460 Fax: (505) 476-3462

State of New Mexico
Energy, Minerals & Natural Resources
Department
OIL CONSERVATION DIVISION
1220 South St. Francis Dr.
Sante Fe, NM 87505

FORM C-102

Revised August 1, 2011

Submit one copy to appropriate

District Office

☐ AMENDED REPORT

WELL LOCATION AND ACREAGE DEDICATION PLAT

¹ API Number 30-025-46733	² Pool Code 59900	³ Pool Name TRIPLE X; BONE SPRING
⁴ Property Code 313956	⁵ Property Name NEPTUNE 10 STATE COM	⁶ Well Number 203H
⁷ OGRID No. 7377	⁸ Operator Name EOG RESOURCES, INC.	⁹ Elevation 3613'

¹⁰Surface Location

UL or lot no.	Section	Township	Range	Lot Idn	Feet from the	North/South line	Feet from the	East/West line	County
0	10	24-S	33-E	-	97'	SOUTH	2202'	EAST	LEA

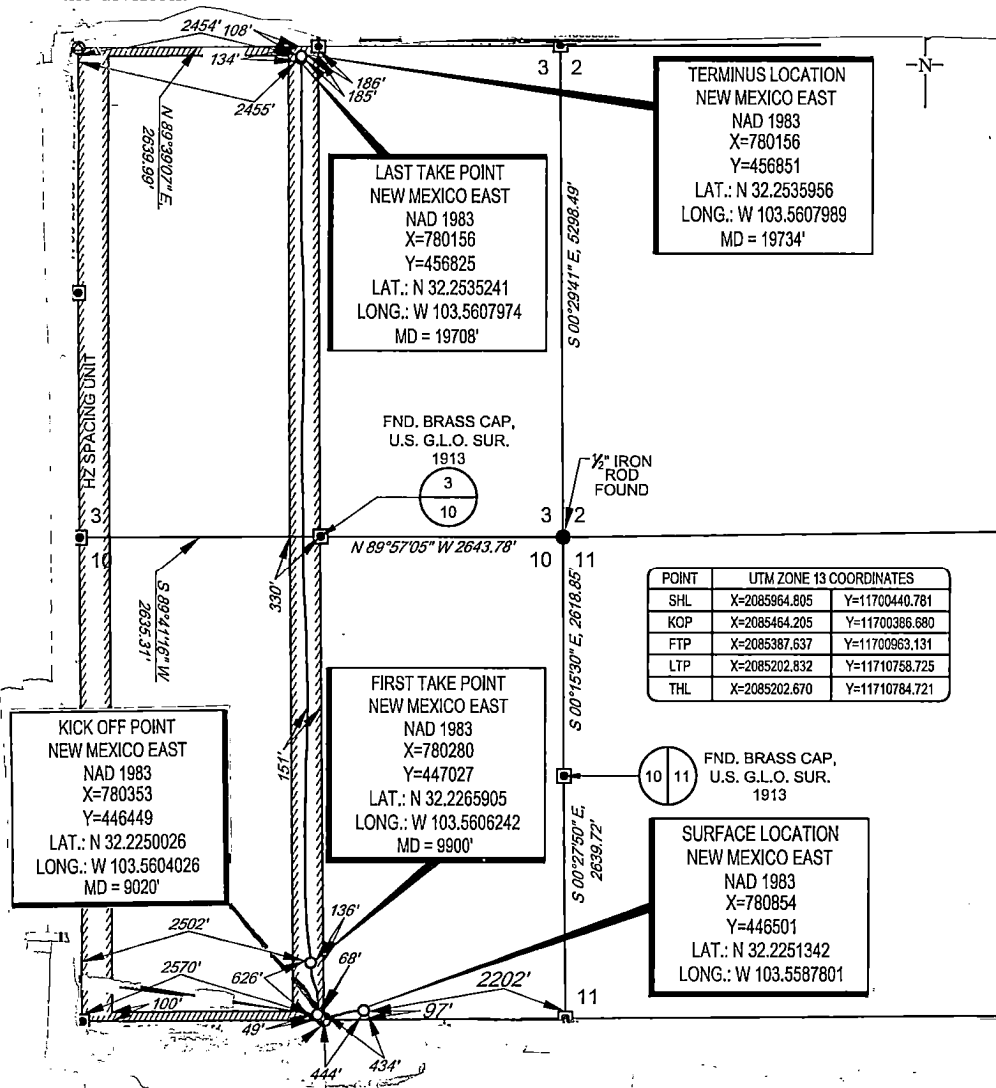
¹¹Bottom Hole Location If Different From Surface

NSL-7986

UL or lot no.	Section	Township	Range	Lot Idn	Feet from the	North/South line	Feet from the	East/West line	County
C	3	24-S	33-E	-	185'	NORTH	2454'	WEST	LEA

¹² Dedicated Acres 640.23	¹³ Joint or Infill	¹⁴ Consolidation Code	¹⁵ Order No. NSL 7986
---	-------------------------------	----------------------------------	-------------------------------------

No allowable will be assigned to this completion until all interests have been consolidated or a non-standard unit has been approved by the division.

¹⁷OPERATOR CERTIFICATION

I hereby certify that the information contained herein is true and complete to the best of my knowledge and belief, and that this organization either owns a working interest or unleased mineral interest in the land including the proposed bottom hole location or has a right to drill this well at this location pursuant to a contract with an owner of such a mineral or working interest, or to a voluntary pooling agreement or a compulsory pooling order heretofore entered by the division.

Kay Maddox 11/17/2020
Signature Date

KAY MADDOX
Printed Name

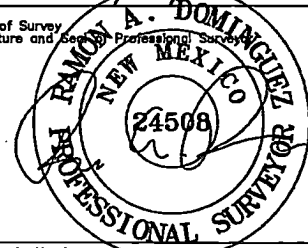
kay.maddox@eogresources.com
E-mail Address

¹⁸SURVEYOR CERTIFICATION

I hereby certify that the well location shown on this plat was plotted from field notes of actual surveys made by me or under my supervision, and that the same is true to the best of my belief.

11/20/2019

Date of Survey
Signature and Seal of Professional Surveyor

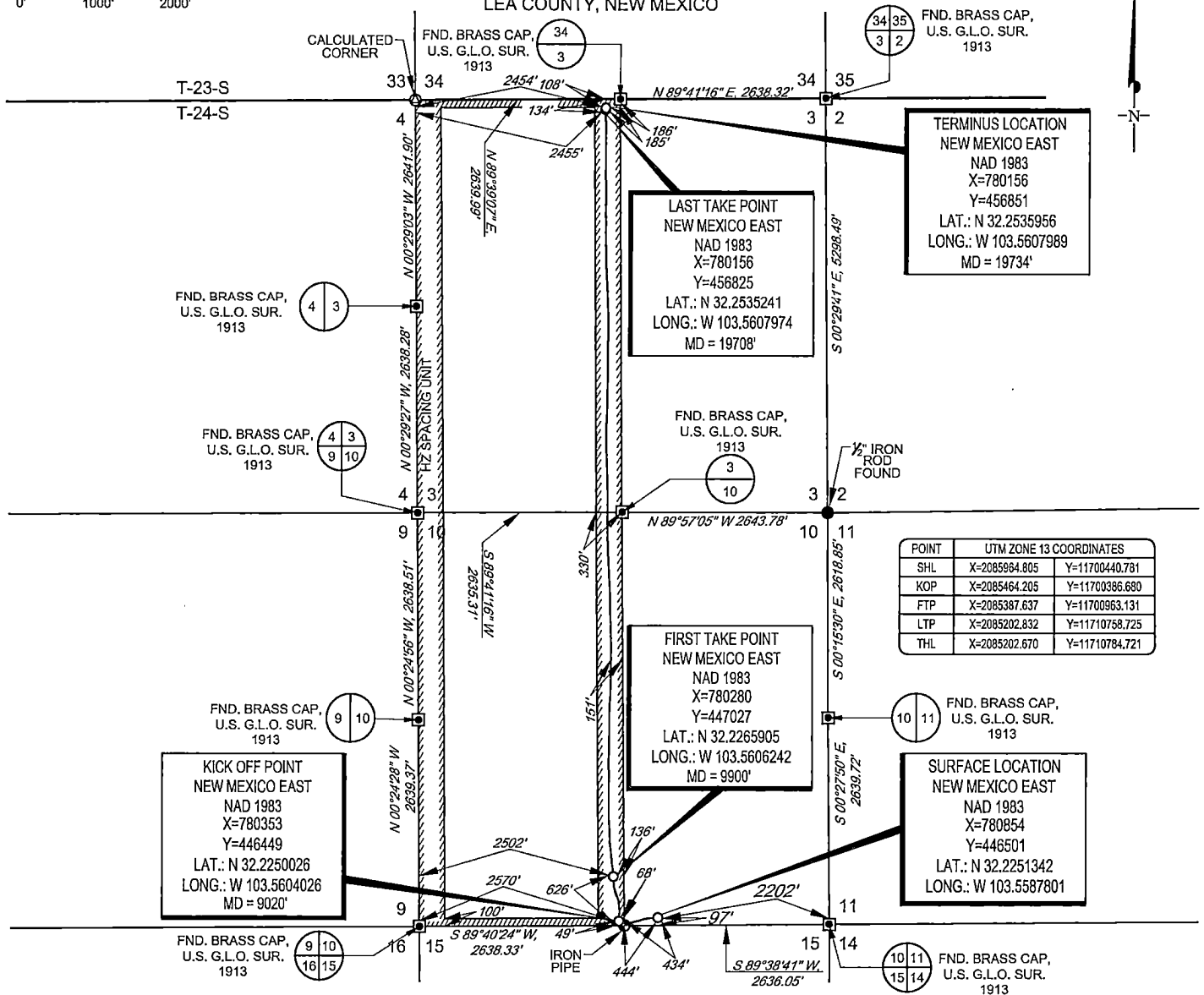


Certificate Number

SCALE: 1" = 2000'

0' 1000' 2000'

SECTION 10 TOWNSHIP 24-S, RANGE 33-E, N.M.P.M.
LEA COUNTY, NEW MEXICO

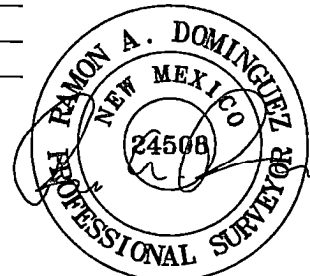


LEASE NAME & WELL NO.: NEPTUNE 10 STATE COM #203H
SECTION 10 TWP 24-S RGE 33-E SURVEY N.M.P.M.
COUNTY LEA STATE NM ELEVATION 3613'
DESCRIPTION 97' FSL & 2202' FEL



TOPOGRAPHIC
LOYALTY INNOVATION LEGACY

1400 EVERMAN PARKWAY, Ste. 146 • FT. WORTH, TEXAS 76140
TELEPHONE: (817) 744-7512 • FAX (817) 744-7554
TEXAS FIRM REGISTRATION NO. 10042504
WWW.TOPOGRAPHIC.COM



Ramon A. Dominguez, P.S. No. 24508
JULY 08, 2020



NEPTUNE 10 STATE COM
#203H
AS-COMPLETE

REVISION:

INT DATE

DATE: 07/08/2020

FILE:AD_NEPTUNE10STATECOM_203H_REV1

DRAWN BY: H.B.

SHEET: 1 OF 1

NOTES:

1. ORIGINAL DOCUMENT SIZE: 8.5" X 11"
2. ALL BEARINGS, DISTANCES, AND COORDINATE VALUES CONTAINED HEREIN ARE GRID BASED UPON THE NEW MEXICO COORDINATE SYSTEM, EAST ZONE, U.S. SURVEY FEET, NORTH AMERICAN DATUM 1983.
3. THIS WELL LOCATION SHOWN HEREON HAS BEEN SURVEYED ON THE GROUND UNDER MY SUPERVISION AND PREPARED ACCORDING TO THE EVIDENCE FOUND AT THE TIME OF SURVEY, AND DATA PROVIDED BY EOG RESOURCES, INC. THIS CERTIFICATION IS MADE AND LIMITED TO THOSE PERSONS OR ENTITIES SHOWN ON THE FACE OF THIS PLAT AND IS NON-TRANSFERABLE. THIS SURVEY IS CERTIFIED FOR THIS TRANSACTION ONLY.

Intent ☐ As Drilled ☐ XXX

API # 30-025-46733			
Operator Name: EOG RESOURCES, INC		Property Name: NEPTUNE 10 STATE COM	Well Number 203H

Kick Off Point (KOP)

UL O	Section 10	Township 24S	Range 33E	Lot	Feet 49	From N/S SOUTH	Feet 2570	From E/W WEST	County LEA
Latitude 32.2250025					Longitude 103.5604026				NAD 1983

First Take Point (FTP)

UL O	Section 10	Township 24S	Range 33E	Lot	Feet 626	From N/S SOUTH	Feet 2502	From E/W WEST	County LEA
Latitude 32.2265905					Longitude 103.5606242				NAD 1983

Last Take Point (LTP)

UL C	Section 3	Township 24S	Range 33E	Lot	Feet 134	From N/S NORTH	Feet 2455	From E/W WEST	County LEA
Latitude 32.2535241					Longitude 103.5607974				NAD 1983

Is this well the defining well for the Horizontal Spacing Unit? ☐ NO

Is this well an infill well? ☐ YES

If infill is yes please provide API if available, Operator Name and well number for Defining well for Horizontal Spacing Unit.

API # 30-025-45637			
Operator Name: EOG RESOURCES, INC		Property Name: NEPTUNE 10 STATE COM	Well Number 302H

KZ 06/29/2018



EOG Resources - Midland

Lea County, NM (NAD 83 NME)

Neptune 10 State Com

#203H

OH

Design: OH

Midland PVA

17 March, 2020



EOG Resources
Midland PVA

Company:	EOG Resources - Midland	Local Co-ordinate Reference:	Well #203H
Project:	Lea County, NM (NAD 83 NME)	TVD Reference:	KB 25 @ 3638.0usft
Site:	Neptune 10 State Com	MD Reference:	KB 25 @ 3638.0usft
Well:	#203H	North Reference:	Grid
Wellbore:	OH	Survey Calculation Method:	Minimum Curvature
Design:	OH	Database:	EDM

Project:	Lea County, NM (NAD 83 NME)		
Map System:	US State Plane 1983	System Datum:	Mean Sea Level
Geo Datum:	North American Datum 1983		
Map Zone:	New Mexico Eastern Zone		

Site:	Neptune 10 State Com		
Site Position:		Northing:	446,557.00 usft
From:	Map	Easting:	778,964.00 usft
Position Uncertainty:	0.0 usft	Slot Radius:	13-3/16 "
		Latitude:	32° 13' 31.172 N
		Longitude:	103° 33' 53.609 W
		Grid Convergence:	0.41 °

Well:	#203H		
Well Position	+N-S	0.0 usft	Northing:
	+E-W	0.0 usft	Easting:
Position Uncertainty	0.0 usft	Wellhead Elevation:	usft
		Latitude:	32° 13' 30.484 N
		Longitude:	103° 33' 31.613 W
		Ground Level:	3,613.0 usft

Wellbore	OH		
Magnetics	Model Name	Sample Date	Declination
			(°)
	IGRF2015	3/3/2020	6.65
			Dip Angle
			(°)
			Field Strength
			(nT)
			47,659.89712089

Design	OH		
Audit Notes:			
Version:	1.0	Phase:	ACTUAL
		Tie On Depth:	0.0
Vertical Section:	Depth From (TVD)	+N-S	+E-W
	(usft)	(usft)	(usft)
	0.0	0.0	0.0
			Direction
			(°)
			356.20



EOG Resources
Midland PVA

Company:	EOG Resources - Midland	Local Co-ordinate Reference:	Well #203H
Project:	Lea County, NM (NAD 83 NME)	TVD Reference:	KB 25 @ 3638.0usft
Site:	Neptune 10 State Com	MD Reference:	KB 25 @ 3638.0usft
Well:	#203H	North Reference:	Grid
Wellbore:	OH	Survey Calculation Method:	Minimum Curvature
Design:	OH	Database:	EDM

Survey Program		Date:	3/17/2020	
From (usft)	To (usft)	Survey (Wellbore)	Tool Name	Description
154.0	1,370.0	Gyrodatta (OH)	EOG MWD+IFR1	MWD + IFR1
1,517.0	19,734.0	Scientific MWD (OH)	EOG MWD+IFR1	MWD + IFR1

MD (usft)	Inc (")	Azi (azimuth) (")	TVD (usft)	N/S (usft)	E/W (usft)	DLeg (°/100usft)	Build (°/100usft)	Turn (°/100usft)	High to Plan (usft)	Right to Plan (usft)
0.0	0.00	0.00	0.0	0.0	0.0	0.00	0.00	0.00	0.0	0.0
154.0	0.59	163.38	154.0	-0.8	0.2	0.38	0.38	0.00	0.0	0.0
331.0	0.74	125.44	331.0	-2.3	1.4	0.26	0.08	-21.44	0.0	0.0
506.0	0.51	171.21	506.0	-3.7	2.5	0.30	-0.13	26.15	0.0	0.0
679.0	0.74	146.93	679.0	-5.4	3.2	0.20	0.13	-14.03	0.0	0.0
870.0	0.20	202.77	870.0	-6.8	3.7	0.34	-0.28	29.24	0.0	0.0
1,059.0	0.76	252.82	1,059.0	-7.4	2.4	0.34	0.30	26.48	0.0	0.0
1,248.0	0.72	208.11	1,247.9	-8.9	0.6	0.30	-0.02	-23.66	0.0	0.0
1,370.0	0.85	233.10	1,369.9	-10.1	-0.4	0.30	0.11	20.48	0.0	0.0
1,517.0	0.51	267.06	1,516.9	-10.8	-2.0	0.35	-0.23	23.10	0.3	-0.6
1,705.0	5.42	275.49	1,704.6	-10.0	-11.6	2.61	2.61	4.48	-0.2	-3.0
1,893.0	6.61	279.45	1,891.6	-7.3	-31.2	0.67	0.63	2.11	-1.6	-6.9
2,082.0	6.12	275.68	2,079.4	-4.5	-51.9	0.34	-0.26	-1.99	-2.7	-11.1
2,270.0	6.20	276.67	2,266.3	-2.4	-72.0	0.07	0.04	0.53	-3.7	-14.6
2,459.0	5.53	262.17	2,454.3	-2.4	-91.1	0.86	-0.35	-7.67	0.7	-16.4
2,648.0	5.28	265.41	2,642.5	-4.4	-108.8	0.21	-0.13	1.71	1.8	-15.8
2,837.0	4.77	265.20	2,830.8	-5.7	-125.3	0.27	-0.27	-0.11	5.0	-15.6
3,025.0	5.61	256.94	3,018.0	-8.4	-142.1	0.60	0.45	-4.39	9.7	-12.8
3,214.0	5.18	255.01	3,208.2	-12.7	-159.3	0.25	-0.23	-1.02	11.8	-9.1
3,403.0	4.23	255.70	3,394.5	-16.7	-174.3	0.50	-0.50	0.37	15.6	-5.7
3,591.0	5.37	252.43	3,581.9	-21.0	-189.4	0.62	0.61	-1.74	19.3	-0.7



EOG Resources
Midland PVA

Company:	EOG Resources - Midland	Local Co-ordinate Reference:	Well #203H
Project:	Lea County, NM (NAD 83 NME)	TVD Reference:	KB 25 @ 3638.0usft
Site:	Neptune 10 State Com	MD Reference:	KB 25 @ 3638.0usft
Well:	#203H	North Reference:	Grid
Wellbore:	OH	Survey Calculation Method:	Minimum Curvature
Design:	OH	Database:	EDM

Survey											
MD (usft)	Inc (")	Azi (azimuth) (")	TVD (usft)	N/S (usft)	E/W (usft)	DLeg ("/100usft)	Build ("/100usft)	Turn ("/100usft)	High to Plan (usft)	Right to Plan (usft)	
3,779.0	5.43	251.93	3,769.0	-26.5	-206.2	0.04	0.03	-0.27	20.7	4.1	
3,967.0	5.72	249.94	3,956.1	-32.4	-223.5	0.19	0.15	-1.06	21.2	9.9	
4,156.0	6.36	252.99	4,144.1	-38.7	-242.4	0.38	0.34	1.61	21.1	13.6	
4,344.0	6.28	261.20	4,331.0	-43.3	-262.5	0.48	-0.04	4.37	21.8	13.5	
4,439.0	5.06	258.76	4,425.5	-44.9	-271.7	1.31	-1.28	-2.57	21.7	15.4	
4,627.0	7.12	255.55	4,612.4	-49.5	-291.1	1.11	1.10	-1.71	20.2	19.6	
4,816.0	6.20	254.59	4,800.1	-55.1	-312.3	0.49	-0.49	-0.51	17.3	23.6	
4,911.0	6.60	255.42	4,894.5	-57.8	-322.5	0.43	0.42	0.87	16.8	25.2	
5,096.0	5.39	250.24	5,078.5	-63.5	-341.0	0.72	-0.65	-2.80	13.8	30.8	
5,289.0	5.67	281.91	5,270.7	-64.6	-358.9	1.57	0.15	16.41	30.0	18.2	
5,478.0	6.40	286.27	5,458.6	-59.7	-378.1	0.46	0.39	2.31	30.0	9.7	
5,667.0	6.10	291.15	5,646.5	-53.1	-397.6	0.32	-0.16	2.58	28.0	-0.4	
5,855.0	6.11	294.22	5,833.4	-45.4	-416.0	0.17	0.01	1.63	25.2	-10.7	
6,043.0	6.04	293.46	6,020.4	-37.4	-434.2	0.06	-0.04	-0.40	22.9	-19.6	
6,232.0	5.25	294.46	6,208.5	-29.8	-451.2	0.42	-0.42	0.53	21.3	-29.3	
6,421.0	3.87	292.33	6,396.9	-23.8	-465.0	0.74	-0.73	-1.13	25.0	-37.7	
6,609.0	2.14	299.41	6,584.6	-19.7	-473.9	0.94	-0.92	3.77	24.9	-49.5	
6,798.0	1.35	283.95	6,773.5	-18.2	-479.2	0.69	-0.42	-18.76	50.0	-27.7	
6,986.0	1.22	244.51	6,961.5	-19.3	-483.2	0.24	-0.07	-10.34	52.3	-10.2	
7,175.0	1.19	249.17	7,150.4	-20.8	-486.9	0.05	-0.02	2.47	47.3	-14.3	
7,363.0	1.20	238.22	7,338.4	-22.6	-490.4	0.12	0.01	-5.82	45.3	-5.4	
7,552.0	1.57	236.60	7,527.3	-25.0	-494.2	0.20	0.20	-0.86	40.8	-4.2	
7,620.7	1.47	229.66	7,596.0	-26.1	-495.7	0.30	-0.14	-10.10	39.2	0.7	
Brushy Top (Neptune 10 SC 203H)											
7,741.0	1.36	215.52	7,716.3	-26.3	-497.7	0.30	-0.09	-11.75	34.9	9.8	
7,930.0	1.01	217.92	7,905.2	-31.4	-500.0	0.19	-0.19	1.27	31.4	8.5	
8,118.0	1.07	191.79	8,093.2	-34.5	-501.4	0.25	0.03	-13.00	21.2	20.7	



EOG Resources
Midland PVA

Company:	EOG Resources - Midland	Local Co-ordinate Reference:	Well #203H
Project:	Lea County, NM (NAD 83 NME)	TVD Reference:	KB 25 @ 3638.0usft
Site:	Neptune 10 State Com	MD Reference:	KB 25 @ 3638.0usft
Well:	#203H	North Reference:	Grid
Wellbore:	OH	Survey Calculation Method:	Minimum Curvature
Design:	OH	Database:	EDM

MD (usft)	Inc (°)	Azi (azimuth) (°)	TVD (usft)	N/S (usft)	E/W (usft)	DLeg (°/100usft)	Build (°/100usft)	Turn (°/100usft)	High to Plan (usft)	Right to Plan (usft)
8,307.0	1.10	179.26	8,282.2	-38.0	-501.7	0.13	0.02	-6.63	12.7	24.4
8,495.0	1.07	173.51	8,470.1	-41.5	-501.5	0.06	-0.02	-3.06	6.6	25.4
8,684.0	1.34	178.13	8,659.1	-45.5	-501.2	0.15	0.14	2.44	4.7	24.9
8,872.0	0.86	183.59	8,847.1	-49.1	-501.3	0.26	-0.26	2.90	3.4	24.6
8,954.0	1.18	183.96	8,929.0	-50.6	-501.3	0.39	0.39	0.45	2.1	24.6
9,007.0	0.86	179.97	8,982.0	-51.5	-501.4	0.62	-0.60	-7.53	-0.5	24.6
9,020.0	1.04	2.63	8,995.0	-51.5	-501.4	14.60	1.37	-1,364.16	-0.6	-24.6
KOP, MD:9020.0, TVD:8995.0, N/S: -51.5, E/W: -501.4, INC:1.04										
9,101.0	12.86	1.52	9,075.3	-41.7	-501.1	14.60	14.60	-1.37	-8.2	-24.9
9,196.0	31.55	2.33	9,162.9	-6.0	-499.8	19.68	19.67	0.85	-29.4	-28.0
9,290.0	42.46	4.83	9,237.8	50.4	-496.1	11.71	11.61	2.66	-60.4	-32.9
9,384.0	44.70	357.60	9,306.0	115.1	-494.8	5.81	2.38	-7.69	-81.0	-46.9
9,478.0	45.07	352.04	9,372.6	181.1	-500.8	4.19	0.39	-5.91	-87.0	-54.7
9,519.9	47.00	348.36	9,401.7	210.8	-506.0	7.83	4.61	-8.80	-84.0	-56.8
FTP (Neptune 10 SC 203H)										
9,572.0	49.56	344.09	9,436.3	248.5	-515.3	7.83	4.91	-8.18	-78.1	-55.2
9,667.0	54.30	336.97	9,495.0	318.9	-540.3	7.72	4.99	-7.49	-62.6	-39.8
9,738.9	60.14	346.68	9,533.9	376.2	-558.9	13.95	8.12	13.51	-49.6	-22.6
FTP Crossing, MD:9738.9, TVD:9533.9, N/S:376.2, E/W:-558.9, INC:60.14										
9,761.0	62.07	349.43	9,544.6	395.2	-562.9	13.95	8.74	12.42	-44.6	-20.1
9,855.0	70.92	358.99	9,582.1	480.7	-571.4	13.24	9.41	10.17	-21.5	-21.0
9,950.0	82.78	354.25	9,603.7	572.9	-576.9	13.39	12.48	-4.99	-1.3	-26.4
10,044.0	87.99	353.39	9,611.3	666.0	-587.0	5.62	5.54	-0.91	6.1	-23.0
10,138.0	89.90	352.80	9,613.0	759.3	-598.3	2.13	2.03	-0.63	7.6	-13.8
10,233.1	90.97	353.36	9,612.3	853.7	-609.8	1.27	1.13	0.59	6.7	-3.1
10,327.0	91.74	357.28	9,610.1	947.2	-617.4	4.25	0.82	4.17	4.3	3.8
10,421.0	90.00	357.44	9,608.6	1,041.1	-621.7	1.86	-1.85	0.17	2.7	7.4



EOG Resources
Midland PVA

Company:	EOG Resources - Midland	Local Co-ordinate Reference:	Well #203H
Project:	Lea County, NM (NAD 83 NME)	TVD Reference:	KB 25 @ 3638.0usft
Site:	Neptune 10 State Com	MD Reference:	KB 25 @ 3638.0usft
Well:	#203H	North Reference:	Grid
Wellbore:	OH	Survey Calculation Method:	Minimum Curvature
Design:	OH	Database:	EDM

Survey											
MD (usft)	Inc (°)	Azi (azimuth) (°)	TVD (usft)	N/S (usft)	E/W (usft)	DLeg (°/100usft)	Build (°/100usft)	Turn (°/100usft)	High to Plan (usft)	Right to Plan (usft)	
10,515.0	89.93	356.76	9,608.7	1,135.0	-626.5	0.73	-0.07	-0.72	2.6	11.4	
10,610.0	90.44	356.14	9,608.4	1,229.8	-632.4	0.85	0.54	-0.65	2.1	16.5	
10,704.0	91.58	359.18	9,606.7	1,323.7	-636.2	3.45	1.21	3.23	0.2	19.6	
10,798.0	89.39	0.82	9,605.9	1,417.7	-636.2	2.91	-2.33	1.74	-0.7	18.9	
10,893.0	88.73	0.70	9,607.5	1,512.7	-635.0	0.71	-0.69	-0.13	0.6	16.9	
10,987.0	89.16	0.37	9,609.2	1,606.7	-634.1	0.58	0.46	-0.35	2.2	15.3	
11,081.0	88.93	359.53	9,610.8	1,700.7	-634.2	0.93	-0.24	-0.89	3.6	14.6	
11,176.0	88.29	358.77	9,613.1	1,795.6	-635.6	1.05	-0.67	-0.80	5.7	15.3	
11,270.0	91.77	359.67	9,613.1	1,889.6	-636.9	3.82	3.70	0.96	5.5	15.8	
11,364.0	92.54	0.03	9,609.5	1,983.5	-637.1	0.90	0.82	0.38	1.7	15.3	
11,458.0	90.57	1.26	9,607.0	2,077.5	-636.0	2.47	-2.10	1.31	-1.0	13.5	
11,553.0	90.23	0.82	9,608.3	2,172.5	-634.3	0.59	-0.36	-0.46	-1.8	11.1	
11,648.0	91.52	1.16	9,604.9	2,267.4	-632.7	1.40	1.36	0.36	-3.5	8.7	
11,742.0	90.57	359.27	9,603.1	2,361.4	-632.3	2.25	-1.01	-2.01	-5.3	7.6	
11,837.0	91.15	0.09	9,601.7	2,456.4	-632.9	1.06	0.61	0.86	-7.0	7.4	
11,931.0	90.97	1.12	9,600.0	2,550.4	-631.9	1.11	-0.19	1.10	-8.9	5.6	
12,025.0	90.13	2.32	9,599.1	2,644.3	-629.0	1.56	-0.89	1.28	-10.0	2.1	
12,119.0	87.95	3.46	9,600.7	2,738.2	-624.3	2.62	-2.32	1.21	-8.6	-3.4	
12,213.0	87.09	3.41	9,604.7	2,831.9	-618.7	0.92	-0.91	-0.05	-4.7	-9.7	
12,308.0	88.15	1.13	9,608.7	2,926.8	-614.9	2.64	1.12	-2.40	-0.9	-14.3	
12,402.0	89.20	0.33	9,610.8	3,020.7	-613.7	1.40	1.12	-0.85	1.1	-16.2	
12,498.0	89.09	0.93	9,612.2	3,114.7	-612.7	0.65	-0.12	0.64	2.3	-18.0	
12,531.1	89.87	0.83	9,612.6	3,149.8	-612.1	2.24	2.22	-0.29	2.6	-18.8	
TGT#1 (Neptune 10 SC 203H)											
12,591.0	91.20	0.65	9,612.0	3,209.7	-611.4	2.24	2.22	-0.29	1.7	-20.0	
12,685.0	91.61	0.65	9,609.7	3,303.7	-610.3	0.44	0.44	0.00	-1.3	-21.8	
12,779.0	91.91	359.07	9,606.8	3,397.6	-610.5	1.71	0.32	-1.68	-4.8	-22.3	



EOG Resources
Midland PVA

Company:	EOG Resources - Midland	Local Co-ordinate Reference:	Well #203H
Project:	Lea County, NM (NAD 83 NME)	TVD Reference:	KB 25 @ 3638.0usft
Site:	Neptune 10 State Com	MD Reference:	KB 25 @ 3638.0usft
Well:	#203H	North Reference:	Grid:
Wellbore:	OH	Survey Calculation Method:	Minimum Curvature
Design:	OH	Database:	EDM

MD (usft)	Inc (°)	Azi (azimuth) (°)	TVD (usft)	N/S (usft)	E/W (usft)	DLeg (°/100usft)	Build (°/100usft)	Turn (°/100usft)	High to Plan (usft)	Right to Plan (usft)
12,874.0	91.81	359.70	9,603.7	3,492.6	-611.6	0.67	-0.11	0.66	-8.5	-22.0
12,969.0	91.01	359.61	9,601.4	3,587.5	-612.1	0.85	-0.84	-0.09	-11.4	-22.2
13,063.0	89.36	358.03	9,601.1	3,681.5	-614.1	2.43	-1.76	-1.68	-12.3	-21.0
13,157.0	90.17	358.89	9,601.5	3,775.5	-616.6	1.26	0.86	0.91	-12.6	-19.2
13,252.0	91.34	358.78	9,600.2	3,870.4	-618.5	1.24	1.23	-0.12	-14.4	-18.0
13,346.0	88.35	358.13	9,600.5	3,964.4	-621.1	3.26	-3.18	-0.69	-14.8	-16.2
13,441.0	88.69	358.31	9,602.9	4,059.3	-624.0	0.40	0.36	0.19	-13.0	-14.0
13,535.0	88.66	358.55	9,605.1	4,153.2	-626.6	0.26	-0.03	0.26	-11.4	-12.2
13,629.0	88.29	357.39	9,607.6	4,247.2	-629.9	1.29	-0.39	-1.23	-9.5	-9.6
13,724.0	89.33	356.97	9,609.6	4,342.0	-634.6	1.18	1.09	-0.44	-8.2	-5.6
13,818.0	89.70	356.65	9,610.4	4,435.9	-639.8	0.52	0.39	-0.34	-8.0	-1.1
13,913.0	89.33	356.16	9,611.2	4,530.7	-645.8	0.65	-0.39	-0.52	-7.8	4.1
14,007.0	90.67	356.68	9,611.2	4,624.5	-651.6	1.53	1.43	0.55	-8.4	9.2
14,101.0	90.87	358.32	9,609.9	4,718.4	-655.7	1.76	0.21	1.74	-10.3	12.6
14,196.0	91.31	357.97	9,608.1	4,813.3	-658.8	0.59	0.46	-0.37	-12.7	14.9
14,290.0	89.46	359.57	9,607.5	4,907.3	-660.8	2.60	-1.97	1.70	-14.0	16.2
14,385.0	91.37	0.55	9,606.8	5,002.3	-660.7	2.26	2.01	1.03	-15.3	15.4
14,479.0	89.06	359.74	9,606.4	5,096.3	-660.5	2.60	-2.46	-0.86	-16.2	14.4
14,574.0	89.60	359.64	9,607.5	5,191.3	-661.0	0.58	0.57	-0.11	-15.7	14.2
14,668.0	89.50	359.59	9,608.3	5,285.3	-661.6	0.12	-0.11	-0.05	-15.6	14.1
14,762.0	90.34	359.59	9,608.4	5,379.3	-662.3	0.89	0.89	0.00	-16.1	14.0
14,857.0	90.40	359.15	9,607.8	5,474.3	-663.4	0.47	0.06	-0.46	-17.3	14.3
14,951.0	89.90	359.29	9,607.6	5,568.2	-664.6	0.55	-0.53	0.15	-18.2	14.9
15,045.0	89.23	358.72	9,608.3	5,662.2	-666.3	0.94	-0.71	-0.61	-18.1	15.8
15,139.0	88.26	358.02	9,610.3	5,756.2	-668.9	1.27	-1.03	-0.74	-16.6	17.7
15,234.0	88.45	357.99	9,613.1	5,851.1	-672.2	0.20	0.20	-0.03	-14.5	20.3
15,328.0	90.34	358.30	9,614.0	5,945.0	-675.3	2.04	2.01	0.33	-14.1	22.6



EOG Resources
Midland PVA

Company:	EOG Resources - Midland	Local Co-ordinate Reference:	Well #203H
Project:	Lea County, NM (NAD 83 NME)	TVD Reference:	KB 25 @ 3638.0usft
Site:	Neptune 10 State Corn	MD Reference:	KB 25 @ 3638.0usft
Well:	#203H	North Reference:	Grid
Wellbore:	OH	Survey Calculation Method:	Minimum Curvature
Design:	OH	Database:	EDM

Survey											
MD (usft)	Inc (°)	Azi (azimuth) (°)	TVD (usft)	N/S (usft)	E/W (usft)	DLeg (°/100usft)	Build (°/100usft)	Turn (°/100usft)	High to Plan (usft)	Right to Plan (usft)	
15,422.0	90.67	358.07	9,613.2	6,039.0	-678.3	0.43	0.35	-0.24	-15.6	24.8	
15,516.0	90.74	359.66	9,612.1	6,132.9	-680.1	1.69	0.07	1.69	-17.4	26.0	
15,605.3	90.36	0.88	9,611.2	6,222.3	-679.7	1.43	-0.42	1.37	-18.8	24.8	
TGT#2(Neptune 10 SC 203H)											
15,611.0	90.34	0.96	9,611.2	6,227.9	-679.5	1.43	-0.42	1.37	-18.9	24.7	
15,706.0	88.96	2.38	9,611.7	6,322.9	-676.8	2.08	-1.45	1.49	-18.1	21.2	
15,800.0	86.82	2.67	9,615.2	6,416.7	-672.7	2.30	-2.28	0.31	-14.4	16.4	
15,894.0	86.10	1.81	9,621.0	6,510.5	-669.0	1.19	-0.77	-0.91	-8.4	12.0	
15,989.0	87.15	0.85	9,626.6	6,605.3	-666.8	1.50	1.11	-1.01	-2.6	9.0	
16,083.0	87.21	0.74	9,631.2	6,699.1	-665.5	0.13	0.06	-0.12	2.3	7.0	
16,178.0	89.63	0.67	9,633.8	6,794.1	-664.4	2.55	2.55	-0.07	5.1	5.0	
16,272.0	90.33	0.60	9,633.9	6,888.1	-663.3	0.75	0.74	-0.07	5.4	3.3	
16,367.0	91.28	0.84	9,632.5	6,983.1	-662.1	1.03	1.00	0.25	4.3	1.3	
16,461.0	90.64	359.44	9,631.0	7,077.1	-661.9	1.64	-0.68	-1.49	2.9	0.4	
16,555.0	88.86	0.69	9,631.4	7,171.0	-661.8	2.31	-1.89	1.33	3.6	-0.5	
16,649.0	88.19	0.86	9,633.8	7,265.0	-660.5	0.74	-0.71	0.18	6.2	-2.5	
16,744.0	86.58	1.11	9,638.1	7,359.9	-658.9	1.72	-1.69	0.26	10.8	-4.8	
16,838.0	85.90	0.88	9,644.3	7,453.7	-657.3	0.76	-0.72	-0.24	17.2	-7.2	
16,932.0	86.61	359.55	9,650.4	7,547.5	-656.9	1.60	0.76	-1.41	23.6	-8.3	
17,026.0	88.02	359.24	9,654.8	7,641.4	-657.9	1.54	1.50	-0.33	28.2	-8.0	
17,120.0	87.96	359.28	9,658.1	7,735.3	-659.1	0.08	-0.06	0.04	31.7	-7.5	
17,215.0	88.89	358.22	9,660.7	7,830.2	-661.2	1.48	0.98	-1.12	34.6	-6.2	
17,309.0	89.70	357.77	9,661.9	7,924.2	-664.5	0.99	0.86	-0.48	36.0	-3.6	
17,403.0	89.80	357.40	9,662.3	8,018.1	-668.4	0.41	0.11	-0.39	36.6	-0.4	
17,497.0	89.26	357.03	9,663.1	8,112.0	-673.0	0.70	-0.57	-0.39	37.6	3.4	
17,591.0	89.63	356.96	9,664.0	8,205.8	-677.9	0.40	0.39	-0.07	38.7	7.6	
17,686.0	89.36	356.73	9,664.8	8,300.7	-683.2	0.37	-0.28	-0.24	39.8	12.1	



EOG Resources
Midland PVA

Company:	EOG Resources - Midland	Local Co-ordinate Reference:	Well #203H
Project:	Lea County, NM (NAD 83 NME)	TVD Reference:	KB 25 @ 3638.0usft
Site:	Neptune 10 State Com	MD Reference:	KB 25 @ 3638.0usft
Well:	#203H	North Reference:	Grid
Wellbore:	OH	Survey Calculation Method:	Minimum Curvature
Design:	OH	Database:	EDM

Survey											
MD (usft)	Inc (°)	Azi (azimuth) (°)	TVD (usft)	N/S (usft)	E/W (usft)	DLeg (°/100usft)	Build (°/100usft)	Turn (°/100usft)	High to Plan (usft)	Right to Plan (usft)	
17,780.0	89.30	357.96	9,665.9	8,394.6	-687.5	1.31	-0.06	1.31	41.1	15.7	
17,874.0	89.16	359.39	9,667.2	8,488.5	-689.7	1.53	-0.15	1.52	42.6	17.2	
17,968.0	89.56	0.00	9,668.2	8,582.5	-690.2	0.78	0.43	0.65	43.9	16.9	
18,063.0	88.82	359.85	9,669.6	8,677.5	-690.3	0.79	-0.78	-0.16	45.5	16.3	
18,157.0	91.01	359.23	9,669.7	8,771.5	-691.1	2.42	2.33	-0.66	45.9	16.3	
18,251.0	92.49	359.25	9,666.9	8,865.5	-692.3	1.57	1.57	0.02	43.2	16.9	
18,345.0	92.04	359.89	9,663.1	8,959.4	-693.0	0.83	-0.48	0.68	39.7	16.8	
18,439.0	92.32	0.22	9,659.6	9,053.3	-692.9	0.46	0.30	0.35	36.4	16.0	
18,534.0	90.94	0.47	9,656.9	9,148.3	-692.4	1.48	-1.45	0.26	33.9	14.7	
18,628.0	89.93	0.28	9,656.2	9,242.3	-691.7	1.09	-1.07	-0.20	33.4	13.4	
18,723.0	89.29	359.55	9,656.8	9,337.3	-691.9	1.02	-0.67	-0.77	34.3	12.8	
18,817.0	88.56	359.15	9,658.6	9,431.2	-692.9	0.89	-0.78	-0.43	36.3	13.1	
18,911.0	86.94	359.01	9,662.3	9,525.1	-694.5	1.73	-1.72	-0.15	40.2	13.9	
19,004.0	91.01	0.43	9,663.9	9,618.1	-694.9	4.63	4.38	1.53	42.1	13.6	
19,100.4	91.84	0.58	9,661.5	9,714.4	-694.1	0.88	0.86	0.16	40.0	12.0	
19,193.0	92.42	359.99	9,658.1	9,807.0	-693.6	0.89	0.63	-0.64	36.7	10.8	
19,287.0	90.24	359.90	9,655.9	9,901.0	-693.7	2.32	-2.32	-0.10	34.8	10.2	
19,381.0	90.07	0.22	9,655.6	9,995.0	-693.6	0.39	-0.18	0.34	34.8	9.3	
19,475.0	90.47	359.22	9,655.2	10,089.0	-694.1	1.15	0.43	-1.06	34.6	9.1	
19,570.0	91.04	359.36	9,653.9	10,184.0	-695.2	0.62	0.60	0.15	33.5	9.5	
19,664.0	91.41	358.54	9,651.9	10,277.9	-697.0	0.96	0.39	-0.87	31.8	10.5	
Last MWD Survey (MD=19664.0)											
19,734.0	91.41	358.54	9,650.2	10,347.9	-698.7	0.00	0.00	0.00	30.2	11.7	
Projection to Bit (MD=19734.0) - PBHL (Neptune 10 SC 203H)											



EOG Resources
Midland PVA

Company:	EOG Resources - Midland	Local Co-ordinate Reference:	Well #203H
Project:	Lea County, NM (NAD 83 NME)	TVD Reference:	KB 25 @ 3638.0usft
Site:	Neptune 10 State Com	MD Reference:	KB 25 @ 3638.0usft
Well:	#203H	North Reference:	Grid
Wellbore:	OH	Survey Calculation Method:	Minimum Curvature
Design:	OH	Database:	EDM

Design Annotations				
Measured Depth (usft)	Vertical Depth (usft)	Local Coordinates		Comment
		+N/-S (usft)	+E/-W (usft)	
9,020.0	8,995.0	-51.5	-501.4	KOP, MD:9020.0', TVD:8995.0', N/S:-51.5', E/W:-501.4', INC:1.04
9,738.9	9,533.9	376.2	-558.9	FTP Crossing, MD:9738.9', TVD:9533.9', N/S:376.2', E/W:-558.9', INC:60.14
19,664.0	9,651.9	10,277.9	-697.0	Last MWD Survey (MD=19664.0')
19,734.0	9,650.2	10,347.9	-698.7	Projection to Bit (MD=19734.0')

Checked By: _____	Approved By: _____	Date: _____
-------------------	--------------------	-------------

I certify this survey to be true and correct to the best of my belief and knowledge.

Kay Maddox 11/18/2020
Signed Date



Lea County, NM (NAD 83 NME)
Neptune 10 State Com #203H
Plan #2

PROJECT DETAILS: Lea County, NM (NAD 83 NME)

Geodetic System: US State Plane 1983
Datum: North American Datum 1983
Ellipsoid: GRS 1980
Zone: New Mexico Eastern Zone
System Datum: Mean Sea Level



Azinuths to Grid North:
True North: -0.41°
Magnetic North: 6.24°

Magnetic Field
Strength: 47659.8nT
Dip Angle: 60.03°
Date: 3/3/2020
Model: IGRF2015

To convert a Magnetic Direction to a Grid Direction, Add 6.24°
To convert a Magnetic Direction to a True Direction, Add 6.65° East
To convert a True Direction to a Grid Direction, Subtract 6.41°

WELL DETAILS: #203H

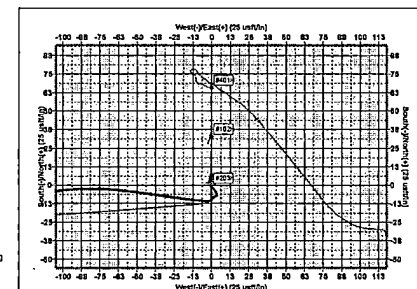
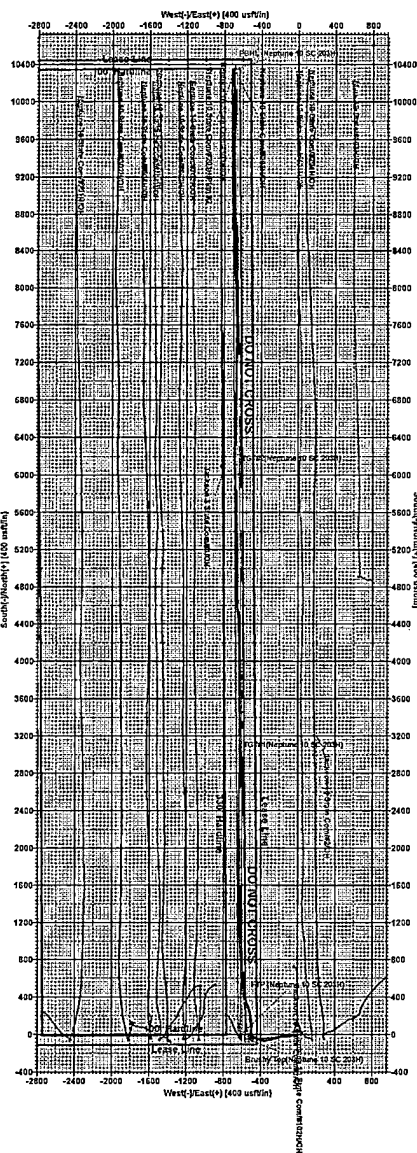
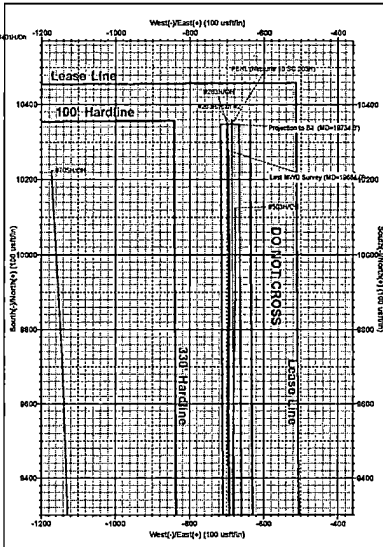
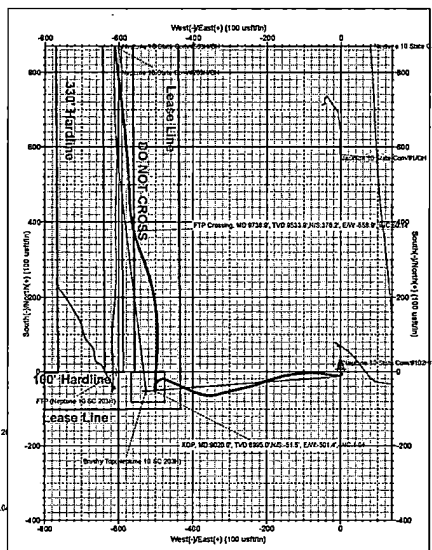
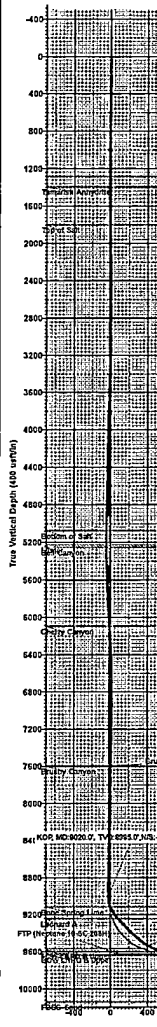
3513.0
KB 25 @ 3530.00ft
Northing 446501.00
Easting 780854.00 32° 13' 30.484 N
Longitude 103° 33' 31.613 W
Slot

SECTION DETAILS

Sec	MD	Inc	Azi	TVD	+N-S	+E-W	Dieg	TFace	VSeet	Target
1	1370.0	0.85	233.10	1369.9	-10.1	-0.4	0.00	0.00	-10.0	
2	1500.1	0.85	233.10	1500.0	-11.2	-2.0	0.00	0.00	-11.1	
3	1765.1	6.00	265.78	1764.5	-13.4	-17.4	2.00	37.63	-12.3	
4	6497.3	6.00	265.78	6470.7	-49.8	-510.4	0.00	0.00	-15.9	
5	6797.1	0.00	0.00	6770.0	-51.0	-526.0	2.00	180.00	-16.0	
6	9059.1	0.00	0.00	9032.0	-51.0	-526.0	0.00	0.00	-16.0	
7	9958.0	89.89	352.85	9905.0	516.4	-597.2	10.00	352.85	554.8	
8	10181.3	89.89	359.55	9905.4	739.1	-612.0	3.00	90.00	778.0	
9	12592.4	89.89	359.55	9910.0	3150.1	-630.9	0.00	0.00	3165.0	TGT#1(Neptune 10 SC 203H)
10	12605.6	89.63	359.55	9910.1	3163.3	-631.0	2.00	179.05	3198.1	
11	15664.7	89.63	359.55	9930.0	6222.3	-654.9	0.00	0.00	6252.0	TGT#2(Neptune 10 SC 203H)
12	15690.4	90.14	359.55	9930.1	6248.0	-655.1	2.00	0.00	6277.7	
13	19790.6	90.14	359.55	9920.0	10348.0	-687.0	0.00	0.00	10370.8	PBHL (Neptune 10 SC 203H)

WELLBORE TARGET DETAILS (MAP CO-ORDINATES)

Name	TVD	+N-S	+E-W	Northing	Easting	Shape
Brushy Top(Neptune 10 SC 203H)	7595.0	-51.0	-226.0	446450.00	780328.00	Polygon
FTP (Neptune 10 SC 203H)	5693.0	-1.0	-405.9	446508.00	780248.00	Point
TGT#1(Neptune 10 SC 203H)	9910.0	3150.1	-439.9	446591.10	780223.07	Point
PBHL (Neptune 10 SC 203H)	9920.0	10348.0	-487.0	446649.00	780167.00	Rectangle (Sides: 1.0 0 W50.0)
TGT#2(Neptune 10 SC 203H)	9930.0	6222.3	-54.9	452723.30	780199.14	Point



Vertical Section at 356.20° (400 units)