

**DISTRICT I**  
1625 N. French Dr., Hobbs, NM 88240  
Phone (575) 392-8161 Fax: (575) 393-0720

**DISTRICT II**  
811 S. First St., Artesia, NM 88210  
Phone (575) 746-1285 Fax: (575) 746-0720

**DISTRICT III**  
1000 Rio Brazos Rd., Aztec, NM 87410  
Phone (505) 334-4178 Fax: (505) 334-4170

**DISTRICT IV**  
1220 S. St. Francis Dr., Santa Fe, NM 87505  
Phone (505) 478-3460 Fax: (505) 478-3482

State of New Mexico  
Energy, Minerals and Natural Resources Department

Form C-102  
Revised August 4, 2011

Submit one copy to appropriate  
District Office

**OIL CONSERVATION DIVISION**  
1220 South St. Francis Dr.  
Santa Fe, New Mexico 87505

**WELL LOCATION AND ACREAGE DEDICATION PLAT**

AMENDED REPORT

API Number 30-025-46492	Pool Code 97895	Pool Name WC-025 G-08 S213340D;BONE SPRING
Property Code 325948	Property Name WOOL HEAD 20 STATE COM	Well Number 512H
OGRID No. 372417	Operator Name ADVANCE ENERGY PARTNERS HAT MESA	Elevation 3726'

Surface Location

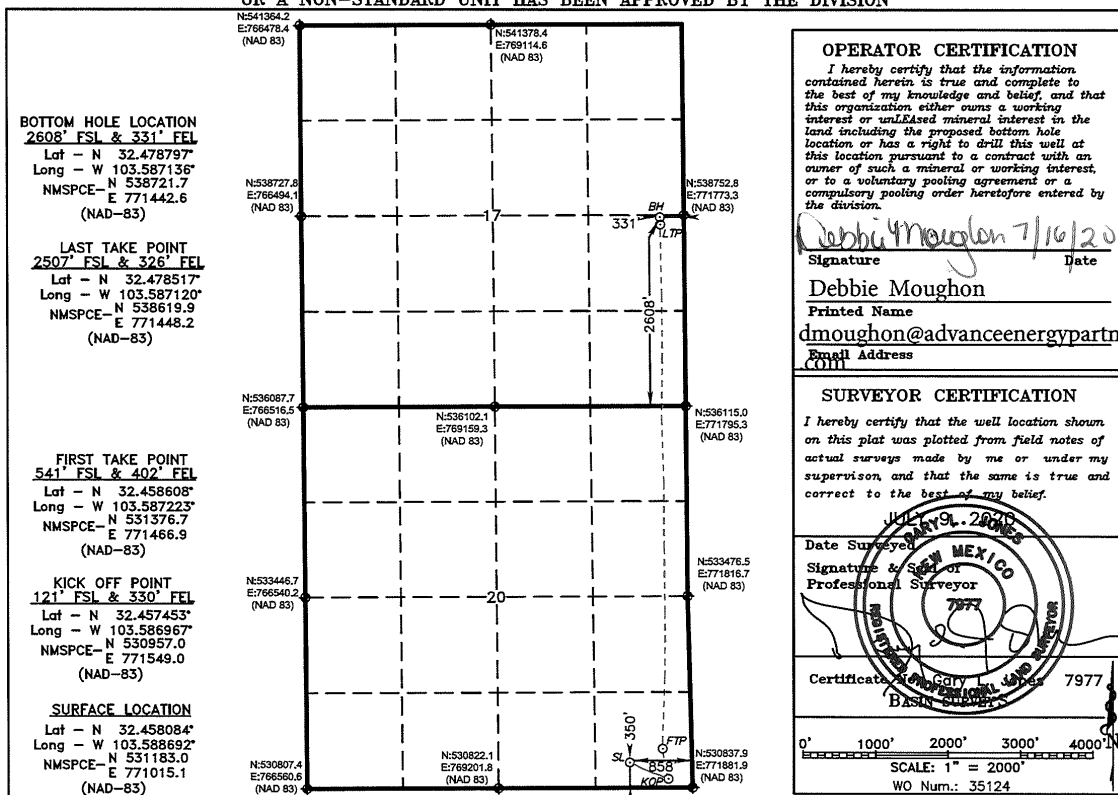
UL or lot No.	Section	Township	Range	Lot Idn	Feet from the	SOUTH/South line	Feet from the	East/West line	County
P	20	21 S	33 E		350	SOUTH	858	EAST	LEA

Bottom Hole Location If Different From Surface

UL or lot No.	Section	Township	Range	Lot Idn	Feet from the	SOUTH/South line	Feet from the	East/West line	County
I	17	21 S	33 E		2608	SOUTH	331	EAST	LEA

Dedicated Acres:      Joint or Infill:      Consolidation Code:      Order No.:

**NO ALLOWABLE WILL BE ASSIGNED TO THIS COMPLETION UNTIL ALL INTERESTS HAVE BEEN CONSOLIDATED OR A NON-STANDARD UNIT HAS BEEN APPROVED BY THE DIVISION**



Intent  As Drilled

API #  
30-025-46492

Operator Name: Advance Energy Partners Hat Mesa	Property Name: Wool Head 20 State Com	Well Number 512H
--	--	---------------------

Kick Off Point (KOP)

UL P	Section 20	Township 21S	Range 33E	Lot	Feet 350	From N/S SOUTH	Feet 858	From E/W EAST	County LEA
Latitude 32.458084					Longitude -103.588692			NAD NAD-83	

First Take Point (FTP)

UL P	Section 20	Township 21S	Range 33E	Lot	Feet 541	From N/S SOUTH	Feet 402	From E/W EAST	County LEA
Latitude 32.458608					Longitude -103.587223			NAD NAD-83	

Last Take Point (LTP)

UL I	Section 17	Township 21S	Range 33E	Lot	Feet 2507	From N/S SOUTH	Feet 326	From E/W EAST	County LEA
Latitude 32.478517					Longitude -103.587120			NAD NAD-83	

Is this well the defining well for the Horizontal Spacing Unit?

Is this well an infill well?

If infill is yes please provide API if available, Operator Name and well number for Defining well for Horizontal Spacing Unit.

API #

Operator Name:	Property Name:	Well Number
----------------	----------------	-------------