

**DISTRICT II**  
1301 W. Grand Avenue, Artesia, NM 88210

**OIL CONSERVATION DIVISION**  
**1220 South St. Frances Dr.**  
**Santa Fe, NM 87505**

**DISTRICT III**  
1000 Rio Brazos Rd., Aztec, NM 87410

**DISTRICT IV**  
1220 S. St. Francis Dr., Santa Fe, NM 87505

☐ AMENDED REPORT

**RECEIVED LOCATION AND ACREAGE DEDICATION PLAT**

API Number	Pool Code	Pool Name
30-025-40149	44500	Maljamar, Yeso West
Property Code	Property Name	Well Number
38251	AQUAMARINE STATE	3
OGRID No.	Operator Name	Elevation
217816	CONOCOPHILLIPS	4016'

### Surface Location

UL or lot No.	Section	Township	Range	Lot Idn	Feet from the	North/South line	Feet from the	East/West line	County
P	16	17 S	32 E		330	SOUTH	820	EAST	LEA

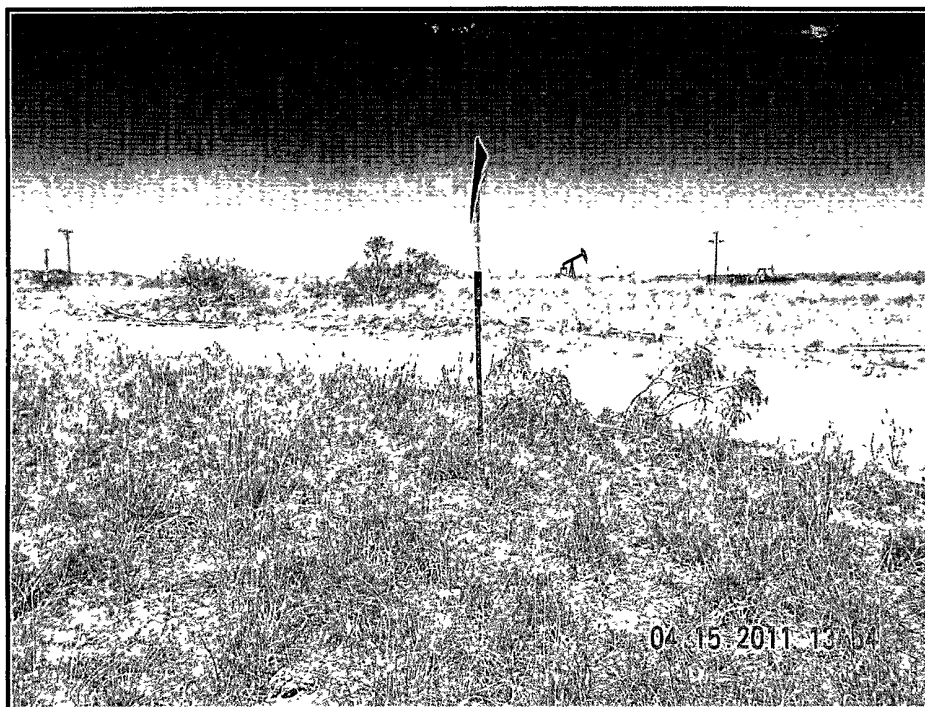
### Bottom Hole Location If Different From Surface

UL or lot No.	Section	Township	Range	Lot Idn	Feet from the	North/South line	Feet from the	East/West line	County
---------------	---------	----------	-------	---------	---------------	------------------	---------------	----------------	--------

Dedicated Acres	Joint or Infill	Consolidation Code	Order No.
40			

NO ALLOWABLE WILL BE ASSIGNED TO THIS COMPLETION UNTIL ALL INTERESTS HAVE BEEN CONSOLIDATED OR A NON-STANDARD UNIT HAS BEEN APPROVED BY THE DIVISION

				<p align="center"><b>OPERATOR CERTIFICATION</b></p> <p>I hereby certify the information contained herein is true and complete to the best of my knowledge and belief, and that this organization either owns a working interest or unleased mineral interest in the land including the proposed bottom hole location or has a right to drill this well at this location pursuant to a contract with an owner of such a mineral or working interest, or to a voluntary pooling agreement or a compulsory pooling order heretofore entered by the division.</p> <p align="right">               Signature Date                Printed Name         </p>
				<p align="center"><b>SURVEYOR CERTIFICATION</b></p> <p>I hereby certify that the well location shown on this plat was plotted from field notes of actual surveys made by me or under my supervision and that the same is true and correct to the best of my belief</p> <p align="right">April 15, 2011</p> <p>Date of Survey</p> <p>Signature &amp; Seal of Professional Surveyor</p> <div style="text-align: center;"> </div> <p align="right">W.O. Num. 2011-0527</p> <p>Certificate No. MACON McDONALD 12185</p>
			<p align="center"><u>Plane Coordinate</u> X = 674,572.2 Y = 665,465.2</p>	
NOTE:			<p>1) Plane Coordinates shown hereon are Transverse Mercator Grid and Conform to the "New Mexico Coordinate System", New Mexico East Zone, North American Datum of 1927. Distances shown hereon are mean horizontal surface values.</p>	



**NORTHERLY VIEW TO LOCATION STAKE**



**WESTERLY VIEW TO LOCATION STAKE**

**ConocoPhillips**

**AQUAMARINE STATE #3**

Located 330' FSL & 820' FEL, Section 16  
Township 17 South, Range 32 East, N.M.P.M.  
Lea County, New Mexico

Drawn By: KHY

Date: May 24, 2011

**WEST**  
**COMPANY**  
of Midland, Inc.

110 W. LOUISIANA, STE. 110  
MIDLAND TEXAS, 79701  
(432) 687-0865 - (432) 687-0868 FAX

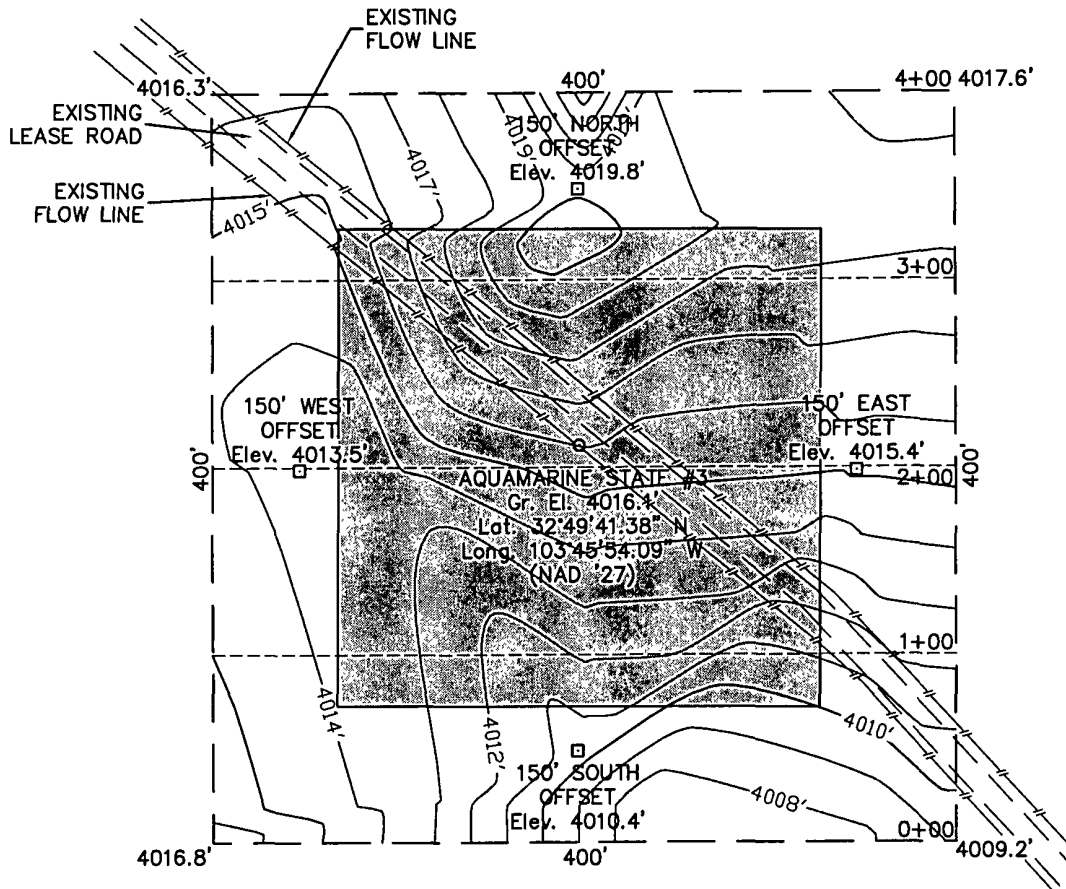
# SECTION 16, TOWNSHIP 17 SOUTH, RANGE 32 EAST, N.M.P.M.

LEA COUNTY

NEW MEXICO

THIS IS NOT A BOUNDARY SURVEY  
Apparent property corners and property lines, if shown,  
are for information only.

L-2011-0527-A



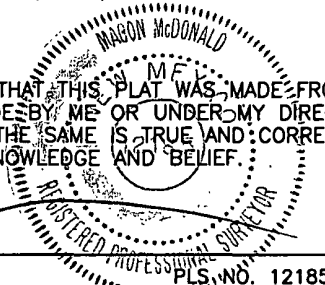
## DRIVING DIRECTIONS

FROM THE INTERSECTION OF STATE HIGHWAY 82 AND COUNTY ROAD IN MALJAMAR, NM. GO SOUTH ON SAID COUNTY ROAD 126 2.0 MILES TO A LEASE ROAD ON WEST (RIGHT) SIDE OF ROAD, THEN GO WEST 0.1 MILE, THEN GO NORTHWEST (RIGHT) 0.1 MILE TO THE PROPOSED LOCATION.



I HEREBY CERTIFY THAT THIS PLAT WAS MADE FROM AN ACTUAL SURVEY MADE BY ME OR UNDER MY DIRECT SUPERVISION AND THAT THE SAME IS TRUE AND CORRECT TO THE BEST OF MY KNOWLEDGE AND BELIEF.

MACON McDONALD



110 W. LOUISIANA, STE. 110  
MIDLAND TEXAS, 79701  
(432) 687-0865 - (432) 687-0868 FAX

ConocoPhillips

Topographic Map

**AQUAMARINE STATE #3**

Located 330' FSL & 820' FEL, Section 16  
Township 17 South, Range 32 East, N.M.P.M.  
Lea County, New Mexico

Drawn By: KHY	Date: May 24, 2011
Scale: 1" = 100'	Field Book: 518 / 8-10
Sheet 1 of 3	Quadrangle: Maljamar
W.O. No: 2011-0527	Dwg. No.: L-2011-0527-A

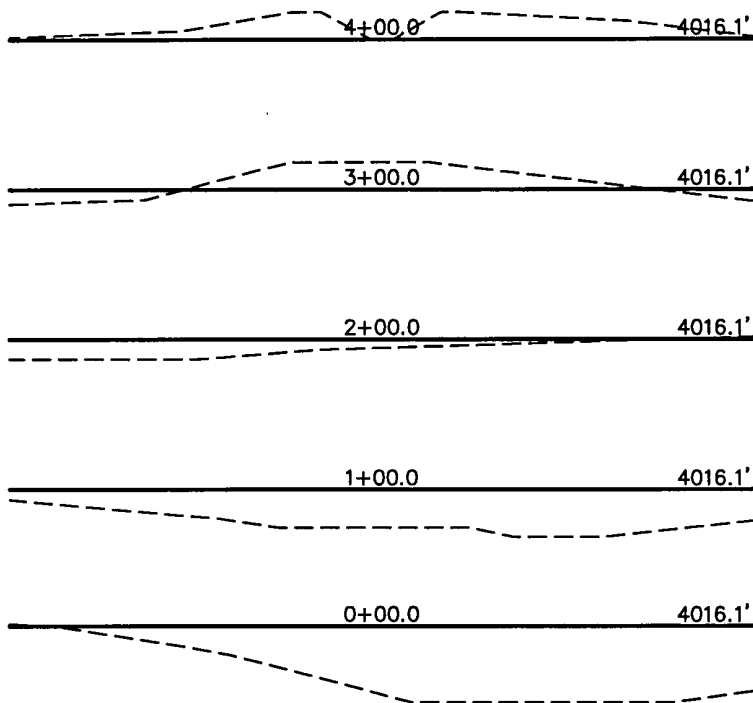
# SECTION 16, TOWNSHIP 17 SOUTH, RANGE 32 EAST, N.M.P.M.

LEA COUNTY

NEW MEXICO

THIS IS NOT A BOUNDARY SURVEY  
Apparent property corners and property lines, if shown,  
are for information only.

L-2011-0527-B



I HEREBY CERTIFY THAT THIS PLAT WAS MADE FROM AN ACTUAL SURVEY MADE BY ME OR UNDER MY DIRECT SUPERVISION AND THAT THE SAME IS TRUE AND CORRECT TO THE BEST OF MY KNOWLEDGE AND BELIEF.

*[Signature]*

MACON McDONALD



ConocoPhillips

Topographic Map

**AQUAMARINE STATE #3**

Located 330' FSL & 820' FEL, Section 16  
Township 17 South, Range 32 East, N.M.P.M.  
Lea County, New Mexico

Drawn By: KHY	Date: May 24, 2011
Scale: 1" = 100'	Field Book: 518 / 8-10
Sheet 2 of 3	Quadrangle: Maljamar
W.O. No: 2011-0527	Dwg. No.: L-2011-0527-B

**WEST**  
**COMPANY**  
of Midland, Inc.

110 W. LOUISIANA, STE. 110  
MIDLAND TEXAS, 79701  
(432) 687-0865 - (432) 687-0868 FAX

# SECTION 16, TOWNSHIP 17 SOUTH, RANGE 32 EAST, N.M.P.M.

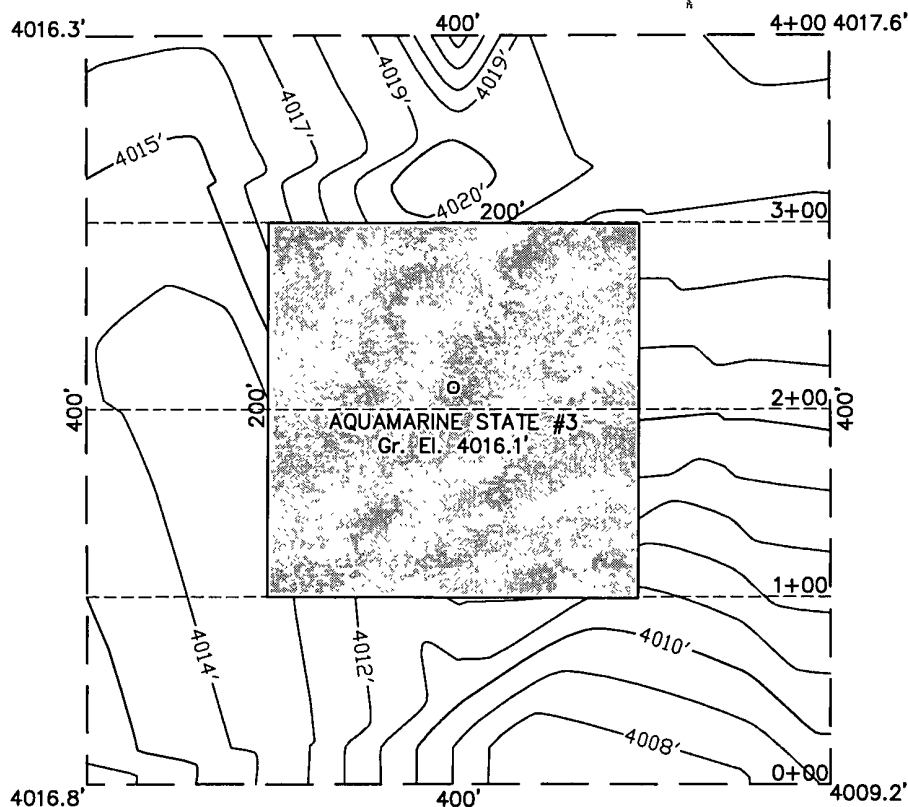
LEA COUNTY

THIS IS NOT A BOUNDARY SURVEY

NEW MEXICO

Apparent property corners and property lines, if shown,  
are for information only.

L-2011-0527-C



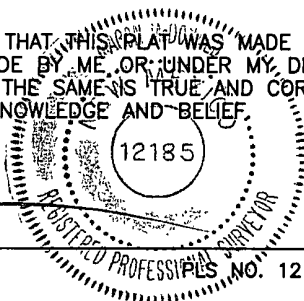
## INTERIM RECLAMATION



I HEREBY CERTIFY THAT THIS PLAT WAS MADE FROM  
AN ACTUAL SURVEY MADE BY ME, OR UNDER MY DIRECT  
SUPERVISION AND THAT THE SAME IS TRUE AND CORRECT  
TO THE BEST OF MY KNOWLEDGE AND BELIEF.

*[Signature]*

MACON McDONALD



110 W. LOUISIANA, STE. 110  
MIDLAND TEXAS, 79701  
(432) 687-0865 - (432) 687-0868 FAX

**ConocoPhillips**

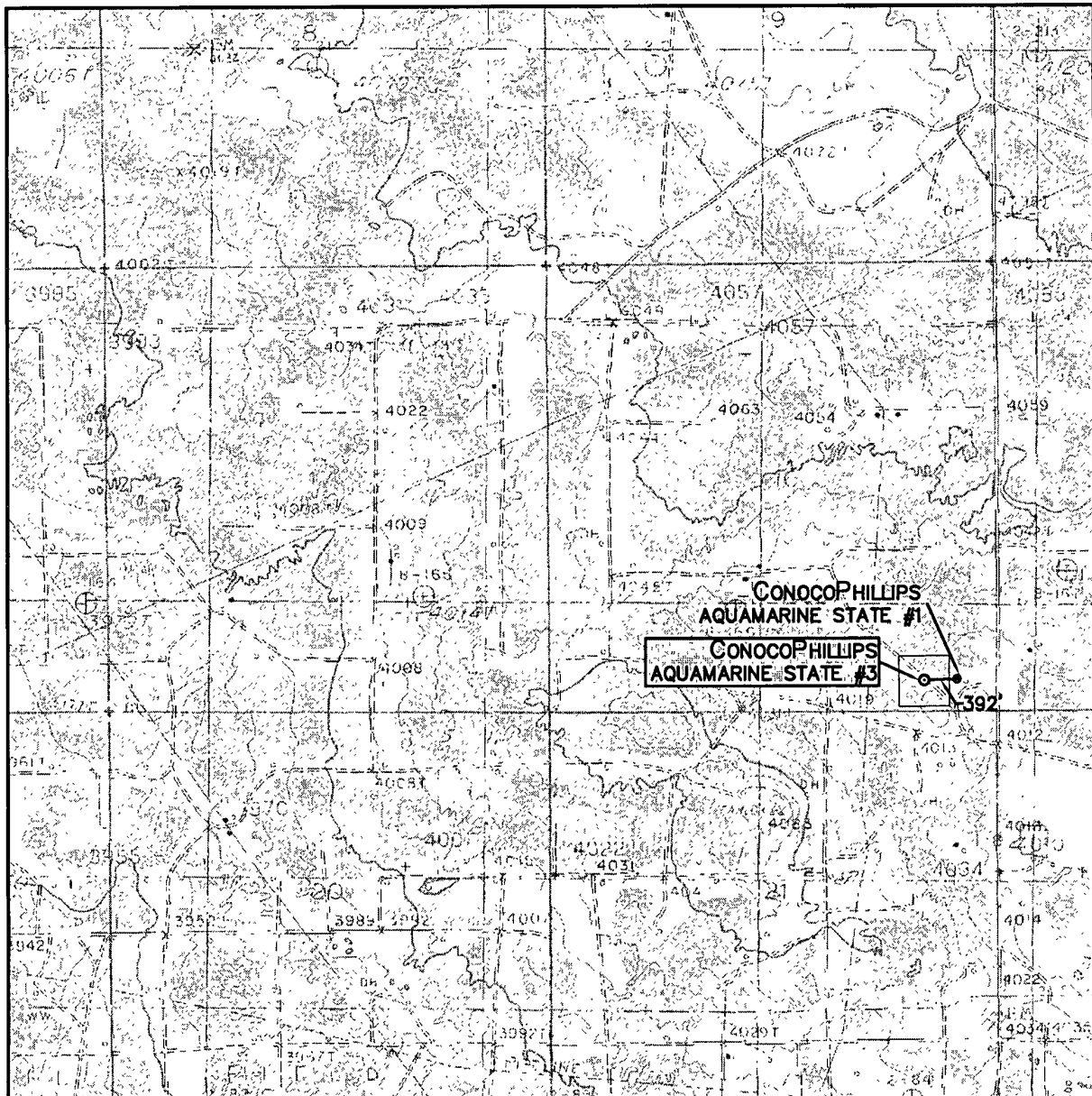
Topographic Map

### AQUAMARINE STATE #3

Located 330' FSL & 820' FEL, Section 16  
Township 17 South, Range 32 East, N.M.P.M.  
Lea County, New Mexico

Drawn By: KHY	Date: May 24, 2011
Scale: 1" = 100'	Field Book: 518 / 8-10
Sheet 3 of 3	Quadrangle: Maljamar
W.O. No: 2011-0527	Dwg. No.: L-2011-0527-C

# LOCATION VERIFICATION MAP



SCALE: 1" = 2000'

CONTOUR INTERVAL:  
MALJAMAR - 10'

SEC. 16 TWP. 17-S RGE. 32-E

SURVEY N.M.P.M.

COUNTY LEA

DESCRIPTION 330' FSL & 820' FEL

ELEVATION 4016'

OPERATOR CONOCOPHILLIPS

LEASE AQUAMARINE STATE

U.S.G.S. TOPOGRAPHIC MAP

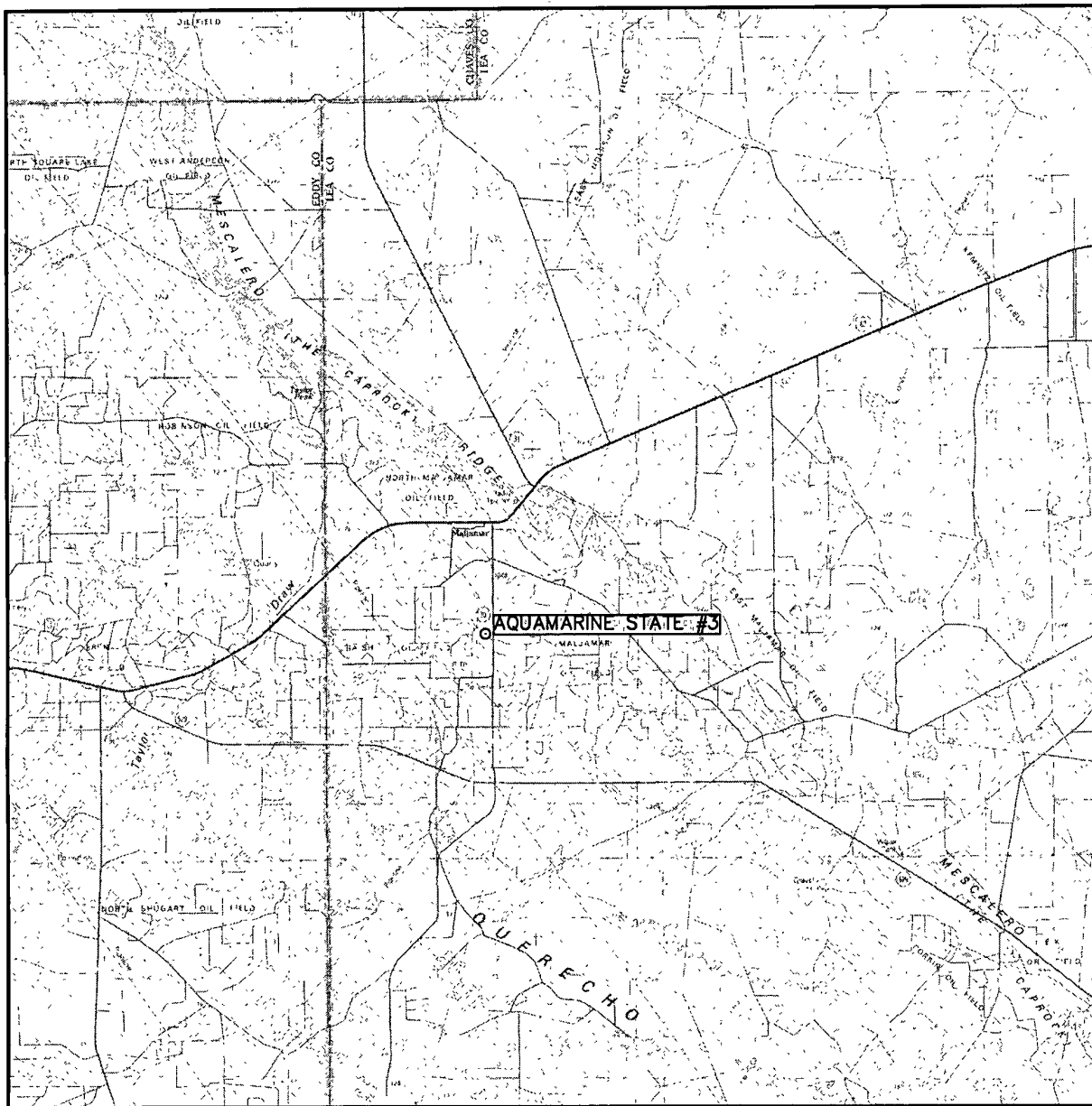
MALJAMAR



**WEST  
COMPANY**  
of Midland, Inc.

110 W. LOUISIANA, STE. 110  
MIDLAND TEXAS, 79701  
(432) 687-0865 - (432) 687-0868 FAX

# VICINITY MAP



SCALE: 1" = 3 MILES

SEC. 16 TWP. 17-S RGE. 32-E  
 SURVEY N.M.P.M.  
 COUNTY LEA  
 DESCRIPTION 330' FSL & 820' FEL  
 ELEVATION 4016'  
 OPERATOR CONOCOPHILLIPS  
 LEASE AQUAMARINE STATE



**WEST  
COMPANY**  
 of Midland, Inc.

110 W. LOUISIANA, STE. 110  
 MIDLAND TEXAS, 79701  
 (432) 687-0865 - (432) 687-0868 FAX