

Submit 1 Copy To Appropriate District Office
 District I
 1625 N French Dr , Hobbs, NM 88240
 District II
 1301 W Grand Ave , Artesia, NM 88210
 District III
 1000 Rio Brazos Rd , Aztec, NM 87410
 District IV
 1220 S St Francis Dr., Santa Fe, NM 87505

State of New Mexico
 Energy, Minerals and Natural Resources
HOBBS OCD
OIL CONSERVATION DIVISION
 220 South St. Francis Dr.
 Santa Fe, NM 87505
JUN 06 2012

Form C-103
 October 13, 2009

WELL API NO. 30-025-28468
5. Indicate Type of Lease STATE <input checked="" type="checkbox"/> FEE <input type="checkbox"/>
6. State Oil & Gas Lease No. VA-928
7. Lease Name or Unit Agreement Name
State NO
8. Well Number 1
9. OGRID Number 018862
10. Pool name or Wildcat SWD Delaware
11. Elevation (Show whether DR, RKB, RT, GR, etc.)

SUNDRY NOTICES AND REPORTS ON WELLS
 (DO NOT USE THIS FORM FOR PROPOSALS TO DRILL OR TO DEEPEN OR PLUG BACK TO A DIFFERENT RESERVOIR USE "APPLICATION FOR PERMIT" (FORM C-101) FOR SUCH PROPOSALS)

1. Type of Well: Oil Well Gas Well Other SWD

2. Name of Operator Basic Energy Services, LP

3. Address of Operator
 P.O Box 10460 Midland Tx, 79702

4. Well Location
 Unit Letter E : 1980 feet from the N line and 660 feet from the W line
 Section 7 Township 19 South Range 36 East NMPM County Lea

12. Check Appropriate Box to Indicate Nature of Notice, Report or Other Data

NOTICE OF INTENTION TO: PERFORM REMEDIAL WORK <input type="checkbox"/> PLUG AND ABANDON <input type="checkbox"/> TEMPORARILY ABANDON <input type="checkbox"/> CHANGE PLANS <input type="checkbox"/> PULL OR ALTER CASING <input type="checkbox"/> MULTIPLE COMPL <input type="checkbox"/> DOWNHOLE COMMINGLE <input type="checkbox"/> OTHER <input type="checkbox"/>	SUBSEQUENT REPORT OF: REMEDIAL WORK <input checked="" type="checkbox"/> ALTERING CASING <input type="checkbox"/> COMMENCE DRILLING OPNS. <input type="checkbox"/> P AND A <input type="checkbox"/> CASING/CEMENT JOB <input type="checkbox"/> OTHER: <input type="checkbox"/>
--	--

13. Describe proposed or completed operations. (Clearly state all pertinent details, and give pertinent dates, including estimated date of starting any proposed work). SEE RULE 19.15.7.14 NMAC. For Multiple Completions: Attach wellbore diagram of proposed completion or recompletion.

5/23/12 MIR RU, wait on slick line NU Pro Wire Line set Blank-plug in "F" nipple release psi, MI BOP, Racks, frac tanks, pipe SDFN
 5/24//12 ND well head NUBOP released on/off tool extracted tubing out of hole standing in derrick, NU redressed on/off tool ran 103 joints 2 7/8 L80 working string back in hole. SDFN
 5/25/12 RIH with 94 joints 2 7/8 L 80 secure well with Master Valve closed in BOP SDFN
 5/26/12 RU Slick line fish out blank-plug from "F" nipple Shut down till 5/29/12
 5/29/12 RU wire line Basic, run in hole ran correlation log, correlated well with open hole density log. RU PP pumped 16 bbls 15% acid and displaced with 36 bbls 10# brine. RIH with RTG's perforated as followed with 4 SPF (7030-7010), (6984-6970),(6940-6908), (6850-6840), (6824-6790), (6776-6766), (6754-6742), (6714-6686), (6666-6656), (6644-6634), (6534-6524), (6450-6444), SDFN
 5/30/12 RU PP started Brine establish rate block with 250 lbs rock salt pump away 373 bbls 15 % acid with 3,920 lbs rock salt. Rate @ 5.2 BPM with 1950 psi. ISP 900 psi, 15 min @ 850 psi. SDFN
 5/31/12 SDFN weather conditions wind bad.
 6/1/12 RIH with Gray slick ling set blank-plug unset on/off tool TOH with working string laying down. NU redressed on/off tool On production string RIH with all tubular in derrick Packer set @ 6336' SDFN
 6/2/12 & 6/3/12 pump away 1200bbls testing well max psi 950 psi at 3400 bbls per day.
 6/4/12 Notified OCD via e-mail will be ready for MIT on 6/5/12 9:00am was approved and passed MIT by Mark Whitaker OCD.
 Spud Date: Rig Release Date:

I hereby certify that the information above is true and complete to the best of my knowledge and belief.

SIGNATURE David H. Alvarado TITLE SENM District Fluid Sales Mgr. DATE 6/5/2012

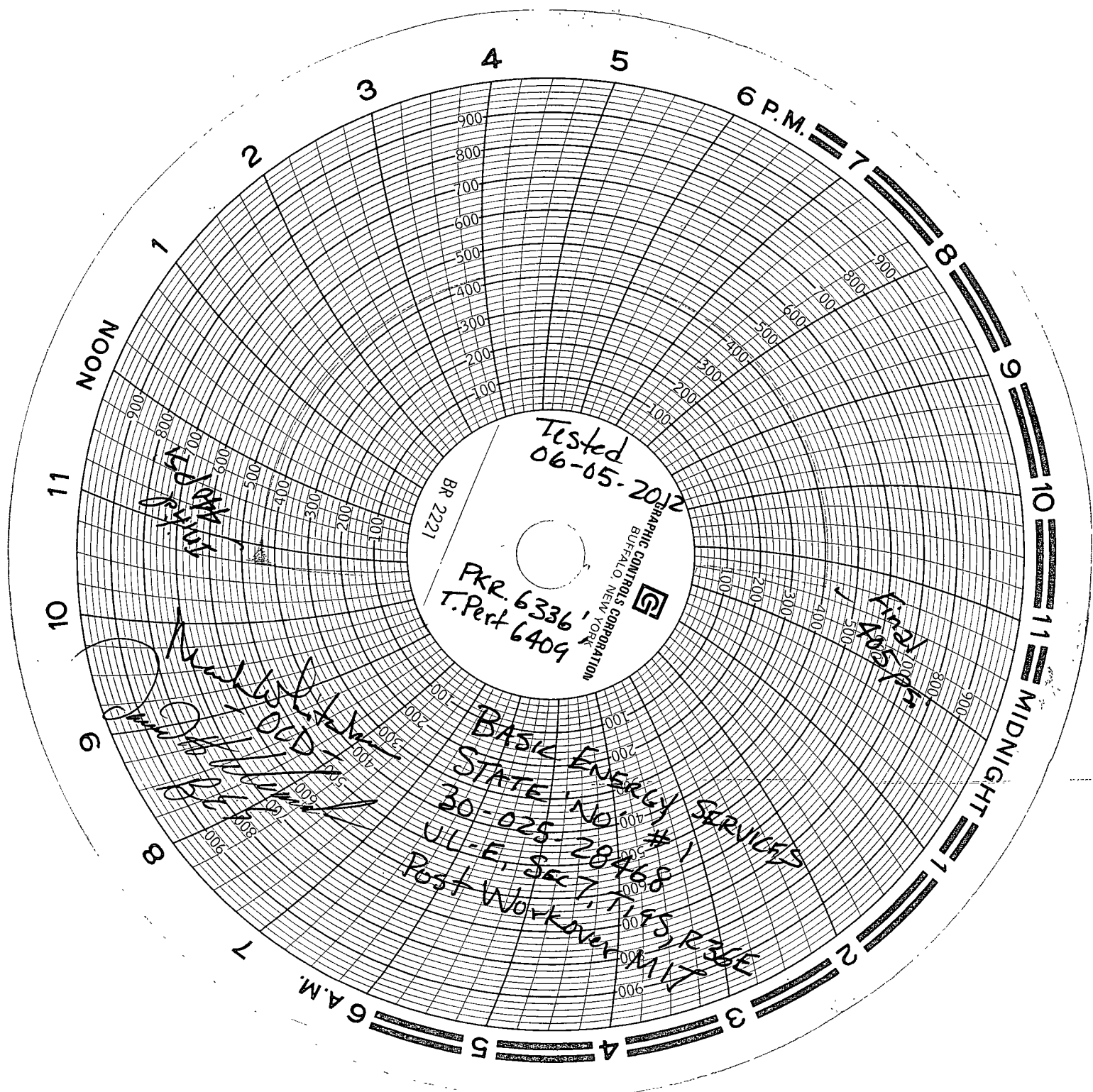
Type or print name DAVID H. ALVARADO E-mail address: david.alvarado@basicenergyservices.com PHONE: 575.746.9663

For State Use Only

APPROVED BY [Signature] TITLE State Mgr DATE 6-11-2012

Conditions of Approval (if any):

JUN 11 2012



Tested
06-05-2012
BR 2221
PKR. 6336
T. Pert 6409

Buffalo County Rols Corporation
Buffalo, New York

Handwritten notes and scribbles on the left side of the grid, including the word "NOON" and various illegible markings.

BASIC ENERGY SERVICES
STATE NO. 30-025-28468
UL-E, Sec 7, TIF
Post Workover

Handwritten notes and scribbles on the right side of the grid, including the word "MIDNIGHT" and various illegible markings.

Basic Energy Services
 State "NO" #1
 1980' FNL & 660' FWL, Sec 7 T192-R36E
 API #: 30-025-28468

Current
 6/6/2012

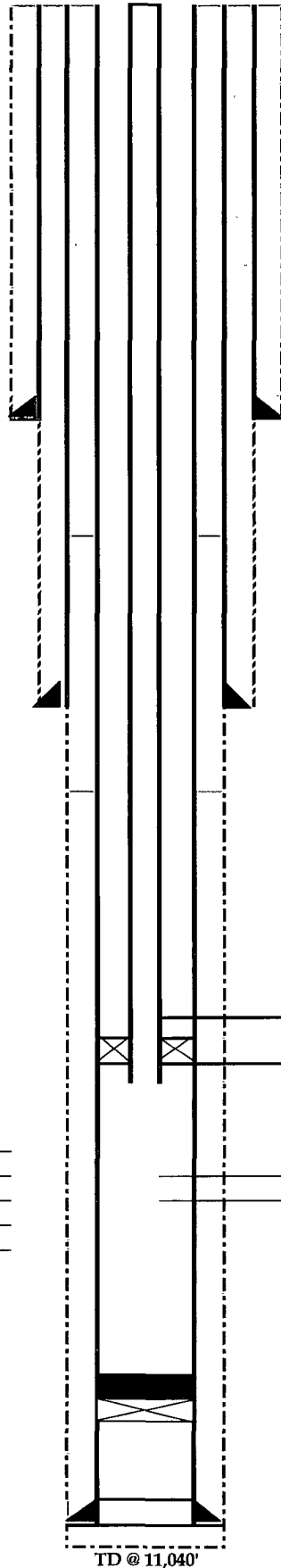
KB: 10'

Surface Hole
 Bit Size: 17.5"

Inter. Hole
 Bit Size: 11"

Cement Data:
 Lead - _____
 Tail - _____
 Note - _____

Bit Size: 7-7/8"



Tree Connection: 2-7/8" 8rd

Surface Casing: 13-3/8" 48 & 72 # Csg
 450 sks circulated
 Setting Depth @ 429'

Squeeze 425 sks 2101' cir to surface

Squeeze 25 sks 4202'

Interm. Casing: 8-5/8" 32# & 24# Casing
 2,400 sks circulated
 Setting Depth: 4,140'

TOC - 5,900'
 Squeeze 50 sks @ 5880'-5600'
 TESED TO 600 PSI 10/11/11

(5775'-5786') Squeezed 2008 per C-103 Westall

2-7/8" J55 IPC set @ 6,336'

5 1/2 13-20# X 2 7/8 ASI-X W/CARBIDES
 NICKLE PLATED 5 1/2 X 2 7/8 ON/OFF TOOL
 W/SS TOP SUB 2 1/4 "F" SS PROFILE 2 7/8 FRAME

Perfs. @ (6409'-6418'),(6430'-6439')(6,444'-6,450')
 (6,524'-6,534') (6,634'-6,644')(6,656'-6,666')
 (6,686'-6,714')(6,742'-6,754') (6,766'-6,776')
 (6,790'-6,824')(6,840'-6,850')(6,908'-6,940')
 (6,970'-6,984')(6981'-7000')(7,000-7030) (7217-7248)

PBTD: CIBP @ 7,400' 10/12/11
 35' CMT on top of plug 10/12/11

Production Csg: 5-1/2" 17# & 15.5# Casing
 975 sks w TOC 5,900' temp survey

Setting Depth @ 11,040'

TD @ 11,040'

Proposed Stimulation Program

Basic Energy Services LP

State NO # 1

API 3002528468

Lea County NM.

Basic Energy Services LP's Intent is as follows; Due to the higher volume of PW that is coming into the State NO #1 Basic Energy Services LP will fully utilize our current permitted injection interval from 6409'-7248' adding the following perforation intervals to maximize or injection rate and maintain our current allowable pressure of 1282 PSI.

Lubricator & set 2.25" plug in 5 1/2' pkr. "F" nipple. ND well head NU BOP, Release tbg. from on/off tool stand tbg. in derrick. Place on/off tool on working string and set on / off tool back on Pkr. psi test tbg & annulus. NU master valve. RU wire line w/ lubricator, retrieve plug out of tbg. Prepare for perforations in selected intervals as depicted with stimulation data below using RTG 2 1/8" guns. 10# Brine will be used for displacement.

Procedure as follow; MIR, Mat, BOP, Racks, working string, RU wire line w /

<i>INTERVALS</i> <i>Stage 1</i>	<i>NET PAY</i>	<i>SPF</i>	<i>PERF HOLES</i>	<i>NEFE 15% gal / shot.</i>	<i>Net gal NEFE / Interval</i>	<i>Net lbs/ Salt block @ 5 lbs per hole</i>
7030-7010 ²⁰	20	4	80	20	1600	400
6984-6970	14	4	56	20	1120	280
6940-6908	32	4	128	20	2560	640
6850-6840	10	4	40	20	800	200
6824-6790	34	4	136	20	2720	680
Totals Stage 1	110'		440		8800	2200
<i>INTERVALS</i> <i>Stage 2</i>	<i>NET PAY</i>	<i>SPF</i>	<i>PERF HOLES</i>	<i>NEFE 15% gal / shot.</i>	<i>Net gal NEFE / Interval</i>	<i>Net lbs/ Salt block @ 4 lbs per hole</i>
6776-6766	10	4	40	20	800	200
6754-6742	12	4	48	20	960	240
6714-6686	28	4	112	20	2240	560
6666-6656 ✓	10	4	40	20	800	200
6644-6634	10	4	40	20	800	200
6534-6524	10	4	40	20	800	200
6450-6444	6	4	24	20	480	120
Totals Stage 2	86		344		6880	1720