

District I
1625 N. French Dr., Hobbs, NM 88240
Phone: (575) 393-6161 Fax: (575) 393-0720
District II
811 S. First St., Artesia, NM 88210
Phone: (575) 748-1283 Fax: (575) 748-9720
District III
1000 Rio Brazos Road, Aztec, NM 87410
Phone: (505) 334-6178 Fax: (505) 334-6170
District IV
1220 S. St. Francis Dr., Santa Fe, NM 87505
Phone: (505) 476-3460 Fax: (505) 476-3462

HOBBS OCD

DEC 04 2012

RECEIVED

State of New Mexico
Energy Minerals and Natural Resources
Oil Conservation Division
1220 South St. Francis Dr.
Santa Fe, NM 87505

Form C-101
Revised October 25, 2012

☐ AMENDED REPORT

APPLICATION FOR PERMIT TO DRILL, RE-ENTER, DEEPEN, PLUGBACK, OR ADD A ZONE

1. Operator Name and Address ICA ENERGY OPERATING, LLC P.O. BOX 2712 ODESSA, TX 79760		2. OGRID Number 178694
		3. API Number 30-041-20956
4. Property Code 395 66	5. Property Name ICA STATE 32	6. Well No. 1

7. Surface Location

UL - Lot	Section	Township	Range	Lot Idn	Feet from	N/S Line	Feet From	E/W Line	County
M	32	8-S	34-E		660	S	660	W	ROOSEVELT

8. Proposed Bottom Hole Location

UL - Lot	Section	Township	Range	Lot Idn	Feet from	N/S Line	Feet From	E/W Line	County
M	32	8-S	34-E		660	S	660	W	ROOSEVELT

9. Pool Information

CLR (SAN ANDRES)	12450
------------------	-------

Additional Well Information

11. Work Type N	12. Well Type O	13. Cable/Rotary R	14. Lease Type PS	15. Ground Level Elevation 4305
16. Multiple NO	17. Proposed Depth 4800	18. Formation SAN ANDRES	19. Contractor UNITED DRILLING, INC.	20. Spud Date On or before 12/15/12
Depth to Ground water		Distance from nearest fresh water well		Distance to nearest surface water

21. Proposed Casing and Cement Program

Type	Hole Size	Casing Size	Casing Weight/ft	Setting Depth	Sacks of Cement	Estimated TOC
SURFACE	17 1/2"	13 3/8"	32	350	400	SURFACE

Casing/Cement Program: Additional Comments

PRODUCTION - 7 7/8" HOLE - 5 1/2" CASING - WT. 15.5# - 4800' DEPTH - 850 SACKS OF CEMENT

Permit Expires 2 Years From Approval
Date Unless Drilling Underway

22. Proposed Blowout Prevention Program

Type	Working Pressure	Test Pressure	Manufacturer
Bottom-Double Ram - Top-Annular	5000#	5000#	SHAFFER

23. I hereby certify that the information given above is true and complete to the best of my knowledge and belief.
I further certify that I have complied with 19.15.14.9 (A) NMAC ☐ and/or 19.15.14.9 (B) NMAC ☐, if applicable.

Signature: *Debbie Curry*
Printed name: Debbie Curry

Title: Operations Assistant

E-mail Address: dcurry@icaenergy.com

Date: 11/30/12

Phone: (432) 580-5722

OIL CONSERVATION DIVISION

Approved By: *[Signature]*

Title: *DAF MAR*

Approved Date: 12-04-2012

Expiration Date: 12-04-2014

Conditions of Approval Attached

DEC 06 2012

DISTRICT I
1625 N. French Dr., Hobbs, NM 88240
Phone: (575) 393-6161 Fax: (575) 393-0720
DISTRICT II
811 S. First St., Artesia, NM 88210
Phone: (575) 748-1283 Fax: (575) 748-9720
DISTRICT III
1000 Rio Brazos Road, Aztec, NM 87410
Phone: (505) 334-6178 Fax: (505) 334-6170
DISTRICT IV
1220 S. St. Francis Dr., Santa Fe, NM 87505
Phone: (505) 476-3460 Fax: (505) 476-3462

State of New Mexico
Energy, Minerals & Natural Resources Department
OIL CONSERVATION DIVISION
1220 South St. Francis Dr.
Santa Fe, New Mexico 87505

HOBBS OCD

DEC 04 2012

RECEIVED

Form C-102
Revised August 1, 2011
Submit one copy to appropriate
District Office

□ AMENDED REPORT

WELL LOCATION AND ACREAGE DEDICATION PLAT

API Number 30041-20956	Pool Code 12450	Pool Name CLR San Andres
Property Code 39566	Property Name ICA STATE 32	Well Number 1
OGRID No. 178694	Operator Name ICA ENERGY OPERATING, LLC	Elevation 4305'

Surface Location

UL or lot No.	Section	Township	Range	Lot Idn	Feet from the	North/South line	Feet from the	East/West line	County
M	32	8-S	34-E		660	SOUTH	660	WEST	ROOSEVELT

Bottom Hole Location If Different From Surface

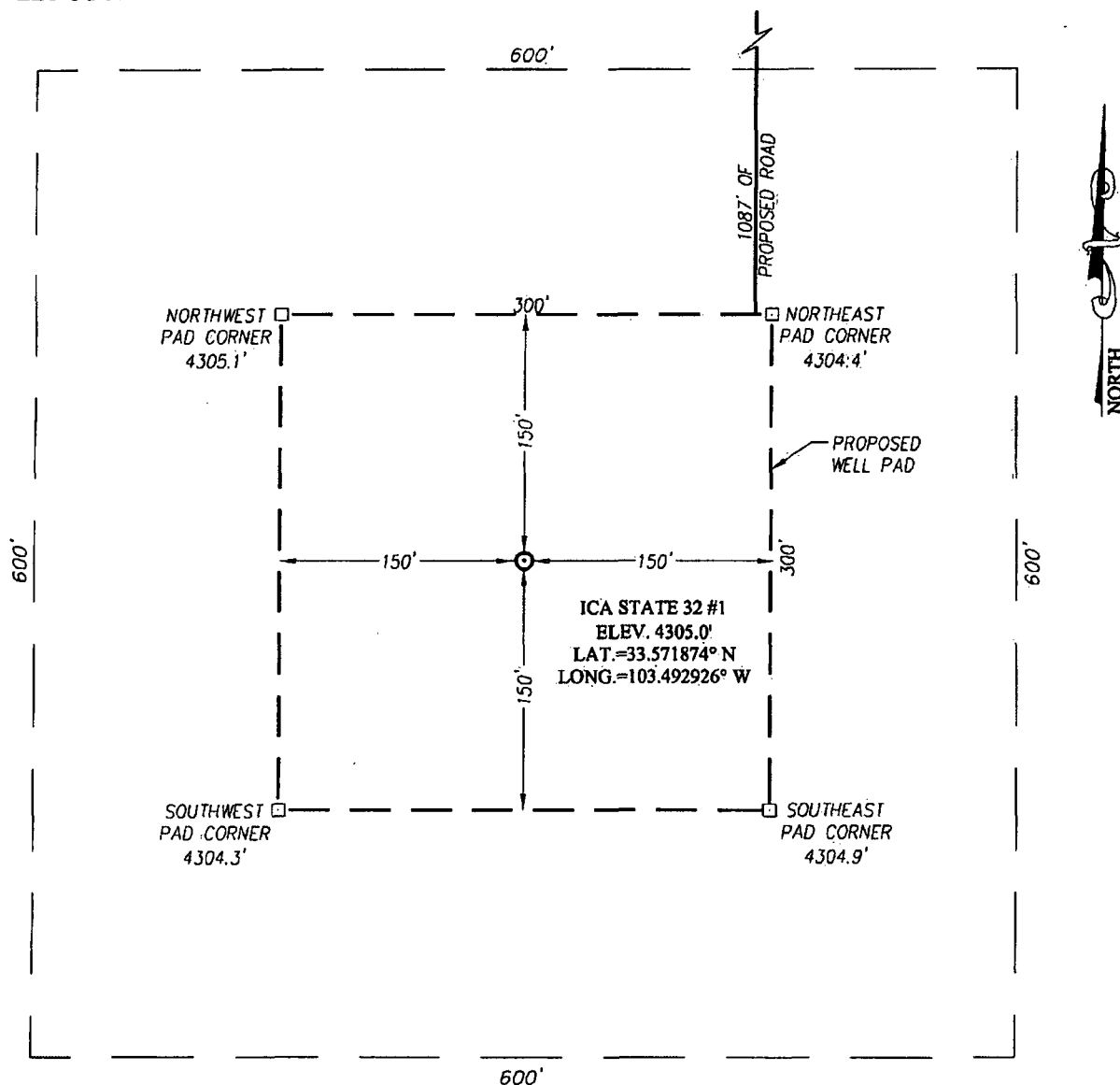
UL or lot No.	Section	Township	Range	Lot Idn	Feet from the	North/South line	Feet from the	East/West line	County
Dedicated Acres	Joint or Infill	Consolidation Code	Order No.						

NO ALLOWABLE WILL BE ASSIGNED TO THIS COMPLETION UNTIL ALL INTERESTS HAVE BEEN CONSOLIDATED OR A NON-STANDARD UNIT HAS BEEN APPROVED BY THE DIVISION

	<p>OPERATOR CERTIFICATION</p> <p>I hereby certify that the information herein is true and complete to the best of my knowledge and belief, and that this organization either owns a working interest or unleased mineral interest in the land including the proposed bottom hole location or has a right to drill this well at this location pursuant to a contract with an owner of such mineral or working interest, or to a voluntary pooling agreement or a compulsory pooling order heretofore entered by the division.</p> <p><i>Debbie Currey</i> 11/30/12 Signature Date <i>Debbie Currey</i> Printed Name <i>dcurrey@icaenergy.com</i> E-mail Address</p>
	<p>SURVEYOR CERTIFICATION</p> <p>I hereby certify that the well location shown on this plat was plotted from field notes of actual surveys made by me or under my supervision, and that the same is true and correct to the best of my belief.</p> <p>SEPTEMBER 27, 2012</p> <p>Date of Survey</p> <p>Signature & Seal of Professional Surveyor:</p> <p><i>Ronald J. Eidson</i> 10/10/2012 Certificate Number Gary C. Eidson 12641 Ronald J. Eidson 3239 AF JWSC W.O.: 12.11.1575</p>

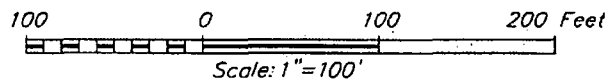
EG 12-04-2012

SECTION 32, TOWNSHIP 8 SOUTH, RANGE 34 EAST, N.M.P.M.
ROOSEVELT COUNTY **NEW MEXICO**



DIRECTIONS TO LOCATION

FROM THE INTERSECTION OF ST. HWY. #206 AND CO. RD. #170 (CARROL) GO WEST ON CO. RD. #170 APPROX. 9.6 MILES. AT A POINT WHERE CARROL ROAD CURVES TO THE RIGHT, FOLLOW CURVE ROAD TO THE NORTH APPROX. 0.5 MILES; CONTINUE NORTH ONTO LEASE ROAD APPROX 1.7 MILES. TURN RIGHT AND GO EAST APPROX. 0.3 MILES. TURN LEFT AND GO NORTH APPROX. 1.3 MILES. TURN RIGHT AND GO EAST APPROX. 0.6 MILES. TURN LEFT AND GO NORTH APPROX. 1.0 MILE. TURN RIGHT AND GO SOUTHEAST APPROX. 0.2 MILES TO A PROPOSED ROAD SURVEY STAKE. FOLLOW ROAD SURVEY SOUTH APPROX. 0.25 MILES TO THIS LOCATION STAKE.



ICA ENERGY OPERATING, LLC

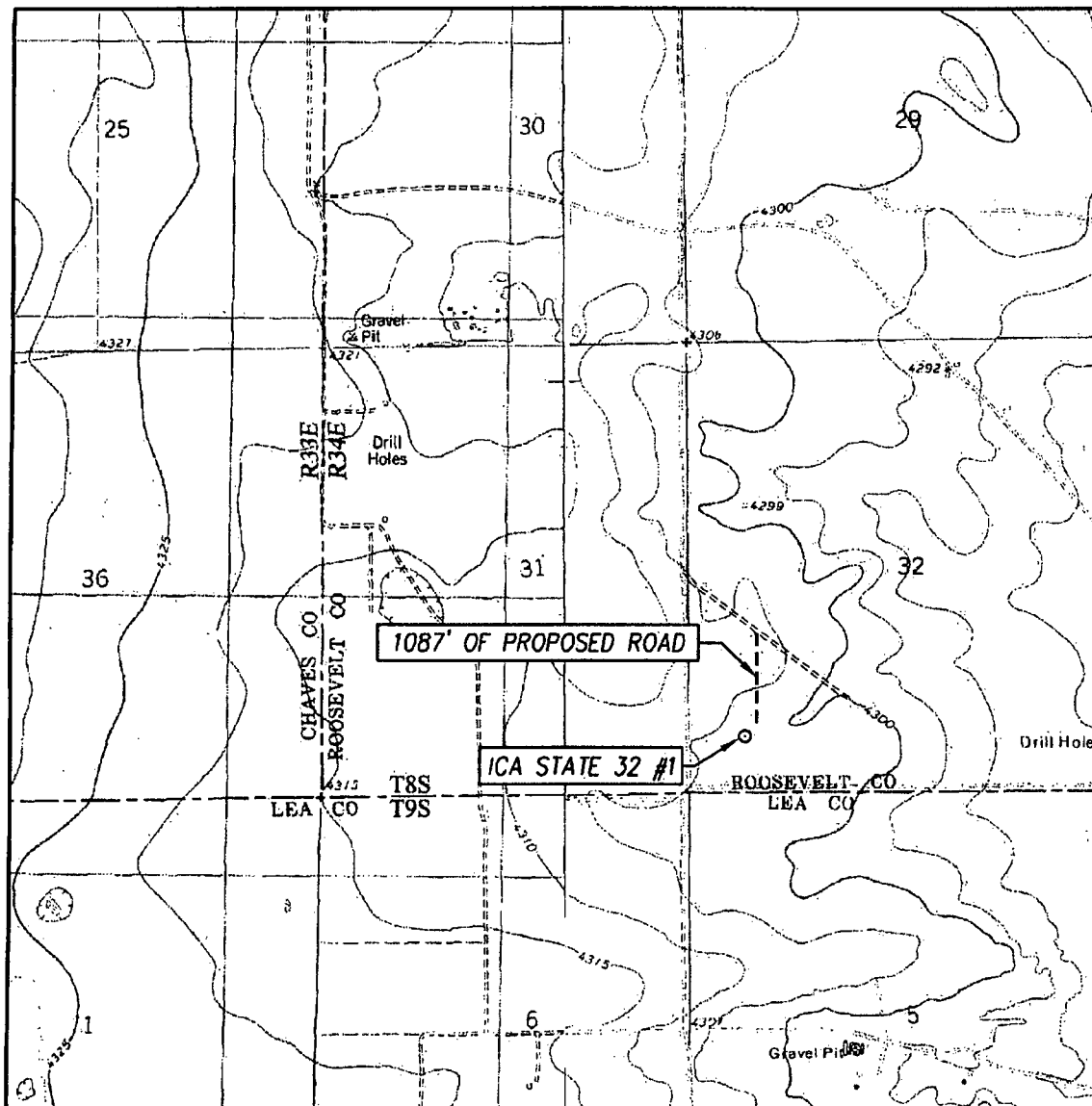
ICA STATE 32 #1 WELL
LOCATED 660 FEET FROM THE SOUTH LINE
AND 660 FEET FROM THE WEST LINE OF SECTION 32,
TOWNSHIP 8 SOUTH, RANGE 34 EAST, N.M.P.M.,
ROOSEVELT COUNTY, NEW MEXICO

PROVIDING SURVEYING SERVICES
 SINCE 1946
JOHN WEST SURVEYING COMPANY
 412 N. DAL PASO
 HOBBS, N.M. 88240
 (575) 393-3117 www.jwsc.biz

Survey Date: 9/27/12	CAD Date: 10/4/12	Drawn By: AF
W.O. No.: 12111575	Rev.:	Rel. W.O.:

Sheet 1 of 1

LOCATION VERIFICATION MAP



SCALE: 1" = 2000'

SEC. 32 TWP. 8-S RGE. 34-E

SURVEY N.M.P.M.

COUNTY ROOSEVELT STATE NEW MEXICO

DESCRIPTION 660' FSL & 660' FWL

ELEVATION 4305'

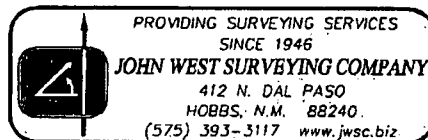
OPERATOR ICA ENERGY OPERATING, LLC

LEASE ICA STATE 32

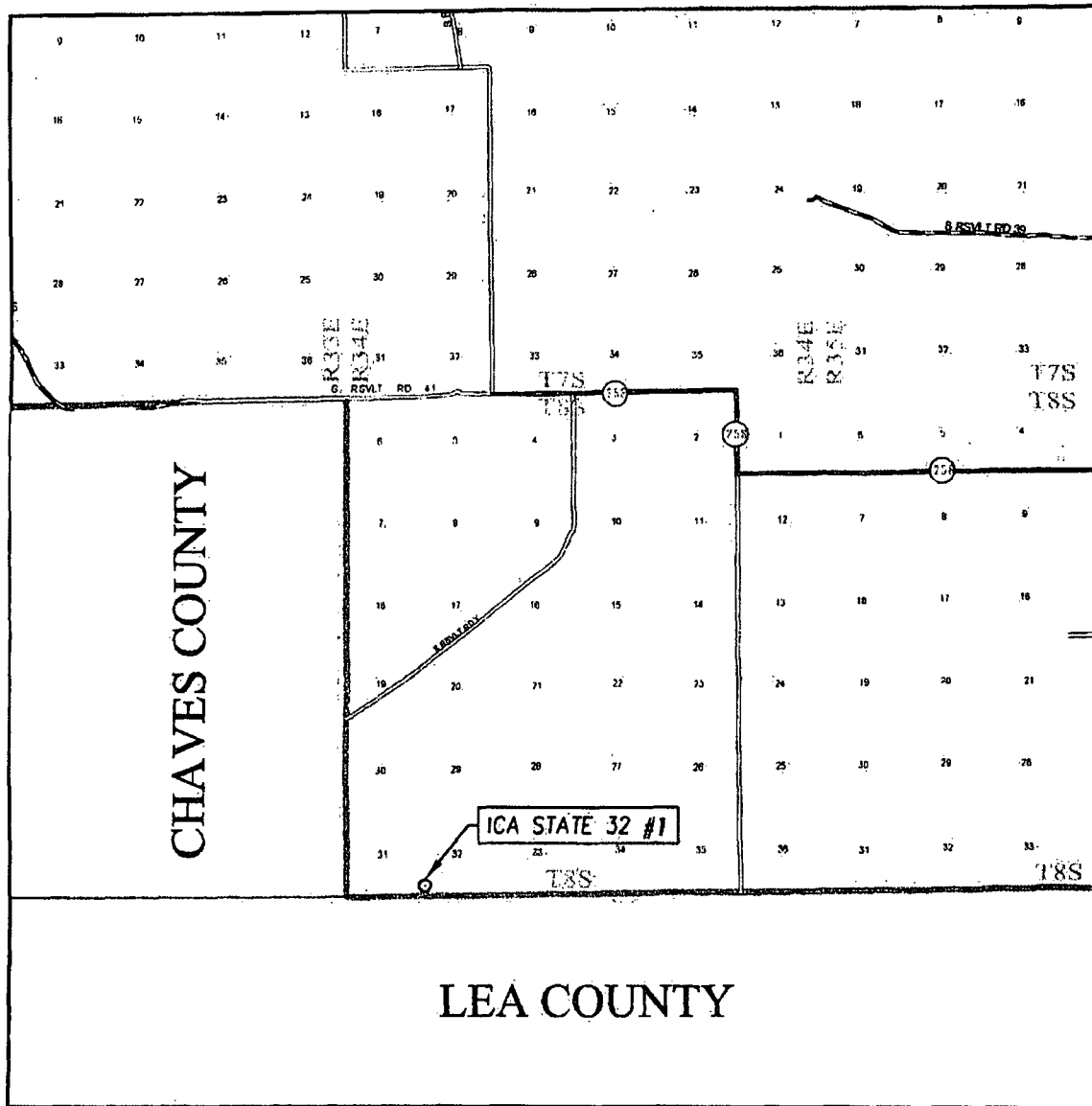
U.S.G.S. TOPOGRAPHIC MAP

MILNESAND SW, N.M.

CONTOUR INTERVAL:
MILNESAND SW, N.M. - 5'
FLYING M RANCH, N.M. - 5'



VICINITY MAP



SCALE: 1" = 2 MILES

SEC. 32 TWP. 8-S RGE. 34-E
 SURVEY N.M.P.M.
 COUNTY ROOSEVELT STATE NEW MEXICO
 DESCRIPTION 660' FSL & 660' FWL
 ELEVATION 4305'
 OPERATOR ICA ENERGY OPERATING, LLC
 LEASE ICA STATE 32

