

**District I**  
1625 N. French Dr., Hobbs, NM 88240  
Phone: (575) 393-6161 Fax: (575) 393-0720

**District II**  
811 S. First St., Artesia, NM 88210  
Phone: (575) 748-1283 Fax: (575) 748-9720

**District III**  
1000 Rio Brazos Road, Aztec, NM 87410  
Phone: (505) 334-6178 Fax: (505) 334-6170

**District IV**  
1220 S. St. Francis Dr., Santa Fe, NM 87505  
Phone: (505) 476-3460 Fax: (505) 476-3462

**State of New Mexico**  
**HOBBS OGD Energy Minerals and Natural Resources**

Form C-101  
Revised October 25, 2012

DEC 04 2012

**Oil Conservation Division**

☐ AMENDED REPORT

1220 South St. Francis Dr.

RECEIVED

Santa Fe, NM 87505

**APPLICATION FOR PERMIT TO DRILL, RE-ENTER, DEEPEN, PLUGBACK, OR ADD A ZONE**

Operator Name and Address <b>ICA ENERGY OPERATING, LLC P.O. BOX 2712 ODESSA, TX 79760</b>		OGRID Number <b>178694</b>
		API Number <b>30041-20957</b>
Property Code <b>39566</b>	Property Name <b>ICA STATE 32</b>	Well No. <b>2</b>

**7. Surface Location**

UL - Lot	Section	Township	Range	Lot Idn	Feet from	N/S Line	Feet From	E/W Line	County
N	32	8-S	34-E		660	S	1980	W	ROOSEVELT

**8. Proposed Bottom Hole Location**

UL - Lot	Section	Township	Range	Lot Idn	Feet from	N/S Line	Feet From	E/W Line	County
N	32	8-S	34-E		660	S	1980	W	ROOSEVELT

**9. Pool Information**

CLR (SAN ANDRES)	12450
------------------	-------

**Additional Well Information**

11. Work Type <b>N</b>	12. Well Type <b>O</b>	13. Cable/Rotary <b>R</b>	14. Lease Type <b>P</b>	15. Ground Level Elevation <b>4304</b>
16. Multiple <b>NO</b>	17. Proposed Depth <b>4800</b>	18. Formation <b>SAN ANDRES</b>	19. Contractor <b>UNITED DRILLING, INC.</b>	20. Spud Date <b>On or before 01/01/13</b>
Depth to Ground water		Distance from nearest fresh water well		Distance to nearest surface water

**21. Proposed Casing and Cement Program**

Type	Hole Size	Casing Size	Casing Weight/ft	Setting Depth	Sacks of Cement	Estimated TOC
<b>SURFACE</b>	<b>17 1/2"</b>	<b>13 3/8"</b>	<b>32</b>	<b>350</b>	<b>400</b>	<b>SURFACE</b>

**Casing/Cement Program: Additional Comments**

PRODUCTION - 7 7/8" HOLE - 5 1/2" CASING - WT. 15.5 - 4800' DEPTH - 850 SACKS OF CEMENT

**Permit Expires 2 Years From Approval  
Date Unless Drilling Underway**

**22. Proposed Blowout Prevention Program**

Type	Working Pressure	Test Pressure	Manufacturer
<b>Bottom-Double Ram - Top-Annular</b>	<b>5000#</b>	<b>5000#</b>	<b>SHAFFER</b>

23. I hereby certify that the information given above is true and complete to the best of my knowledge and belief.  
I further certify that I have complied with 19.15.14.9 (A) NMAC ☐ and/or 19.15.14.9 (B) NMAC ☐, if applicable.

Signature: *Debbie Curry*  
Printed name: Debbie Curry

Title: Operations Assistant

E-mail Address: dcurry@icaenergy.com

Date: 11/30/12

Phone: (432) 580-5722

**OIL CONSERVATION DIVISION**

Approved By: *[Signature]*

Title: *Dist. Mgr.*

Approved Date: 12-04-2012 Expiration Date: 12-04-2014

Conditions of Approval Attached

DEC 06 2012

DISTRICT I  
1625 N. French Dr., Hobbs, NM 88240  
Phone: (575) 393-6161 Fax: (575) 393-0720

DISTRICT II  
811 S. First St., Artesia, NM 88210  
Phone: (575) 748-1283 Fax: (575) 748-9720

DISTRICT III  
1000 Rio Brazos Road, Aztec, NM 87410  
Phone: (505) 334-6178 Fax: (505) 334-6170

DISTRICT IV  
1220 S. St. Francis Dr., Santa Fe, NM 87505  
Phone: (505) 476-3460 Fax: (505) 476-3462

State of New Mexico  
Hobbs, Minerals & Natural Resources Department  
OIL CONSERVATION DIVISION  
1220 South St. Francis Dr.  
Santa Fe, New Mexico 87505

Form C-102  
Revised August 1, 2011  
Submit one copy to appropriate  
District Office

☐ AMENDED REPORT

DEC 04 2012

RECEIVED

WELL LOCATION AND ACREAGE DEDICATION PLAT

API Number 30-041 20957	Pool Code 12450	Pool Name CLR; San Andres
Property Code 39566	Property Name ICA STATE 32	Well Number 2
OGRID No. 178694	Operator Name ICA ENERGY OPERATING, LLC	Elevation 4304'

Surface Location

UL or lot No.	Section	Township	Range	Lot Idn	Feet from the	North/South line	Feet from the	East/West line	County
N	32	8-S	34-E		620	SOUTH	1980	WEST	ROOSEVELT

Bottom Hole Location If Different From Surface

UL or lot No.	Section	Township	Range	Lot Idn	Feet from the	North/South line	Feet from the	East/West line	County

Dedicated Acres	Joint or Infill	Consolidation Code	Order No.

NO ALLOWABLE WILL BE ASSIGNED TO THIS COMPLETION UNTIL ALL INTERESTS HAVE BEEN CONSOLIDATED OR A NON-STANDARD UNIT HAS BEEN APPROVED BY THE DIVISION

<p>GEODETTIC COORDINATES NAD 27 NME</p> <p>SURFACE LOCATION Y=936593.7 N X=757303.5 E</p> <p>LAT.=33.571781° N LONG.=103.488593° W</p>			
<p>1980'</p> <p>620'</p>			

OPERATOR CERTIFICATION

I hereby certify that the information herein is true and complete to the best of my knowledge and belief, and that this organization either owns a working interest or unleased mineral interest in the land including the proposed bottom hole location or has a right to drill this well at this location pursuant to a contract with an owner of such mineral or working interest, or to a voluntary pooling agreement or a compulsory pooling order heretofore entered by the division.

Debbie Curry 11/30/12  
Signature: Date:  
Debbie Curry  
Printed Name  
decurry@icaenergy.com  
E-mail Address

SURVEYOR CERTIFICATION

I hereby certify that the well location shown on this plat was plotted from field notes of actual surveys made by me or under my supervision, and that the same is true and correct to the best of my belief.

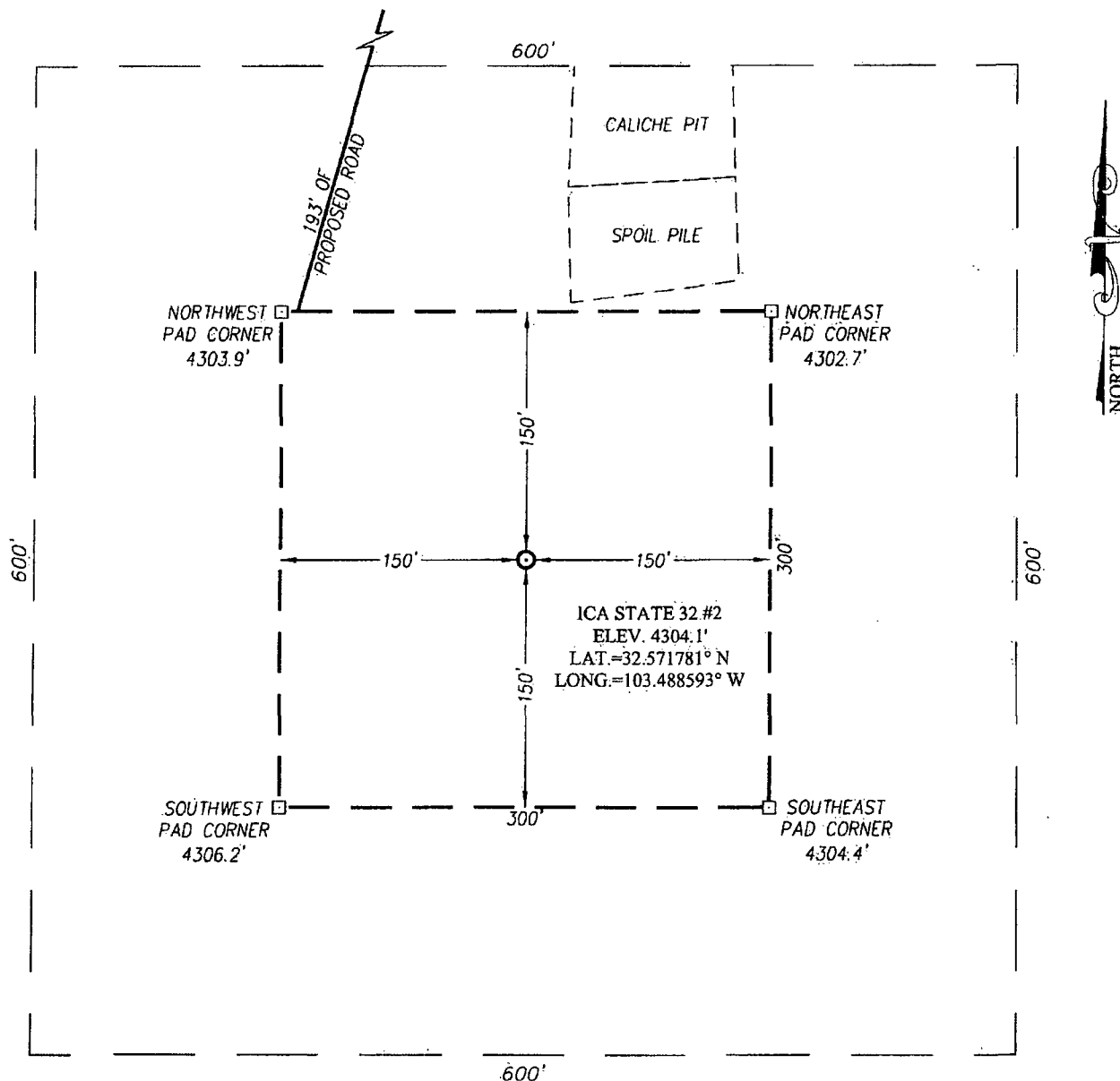
SEPTEMBER 27, 2012

Date of Survey  
Signature of Registered Professional Surveyor:

RONALD J. EIDSON  
NEW MEXICO  
3239  
RONALD J. EIDSON 10/10/2012  
Certificate Number: 12641  
Ronald J. Eidson 3239  
AF JWSC W.O.: 12.11.1576-

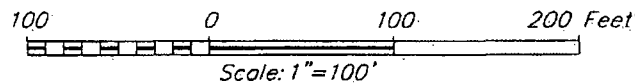
ELG 12-04-2012

**SECTION 32, TOWNSHIP 8 SOUTH, RANGE 34 EAST, N.M.P.M.**  
**ROOSEVELT COUNTY** **NEW MEXICO**



**DIRECTIONS TO LOCATION.**

FROM THE INTERSECTION OF ST. HWY. #206 AND CO. RD. #170 (CARROL) GO WEST ON CO. RD. #170 APPROX. 9.6 MILES. AT THE POINT WHERE CARROL ROAD CURVES TO THE RIGHT, FOLLOW CURVE ROAD TO THE NORTH APPROX. 0.5 MILES; CONTINUE NORTH ONTO LEASE ROAD APPROX. 1.7 MILES. TURN RIGHT AND GO EAST APPROX. 0.3 MILES. TURN LEFT AND GO NORTH APPROX. 1.3 MILES. TURN RIGHT AND GO EAST APPROX. 0.6 MILES. TURN LEFT AND GO NORTH APPROX. 1.0 MILE. TURN RIGHT AND GO SOUTHEAST APPROX. 0.5 MILES TO THE J. CLEO THOMPSON NW JENKINS WELL. FOLLOW ROAD SURVEY FROM SOUTHWEST CORNER OF WELL PAD AND GO SOUTH 193 FEET TO THIS LOCATION.



**ICA ENERGY OPERATING, LLC**


**ICA STATE 32 #2 WELL**  
 LOCATED 620 FEET FROM THE SOUTH LINE  
 AND 1980 FEET FROM THE WEST LINE OF SECTION 32,  
 TOWNSHIP 8 SOUTH, RANGE 34 EAST, N.M.P.M.,  
 ROOSEVELT COUNTY, NEW MEXICO

PROVIDING SURVEYING SERVICES  
 SINCE 1946  
**JOHN WEST SURVEYING COMPANY**  
 412 N. DAL PASO  
 HOBBS, N.M. 88240  
 (575) 393-3117 [www.jwsc.biz](http://www.jwsc.biz)

Survey Date: 9/27/12	CAD Date: 10/5/12	Drawn By: AF
W.O. No.: 12111576	Rev.:	Rel. W.O.:
		Sheet 1 of 1

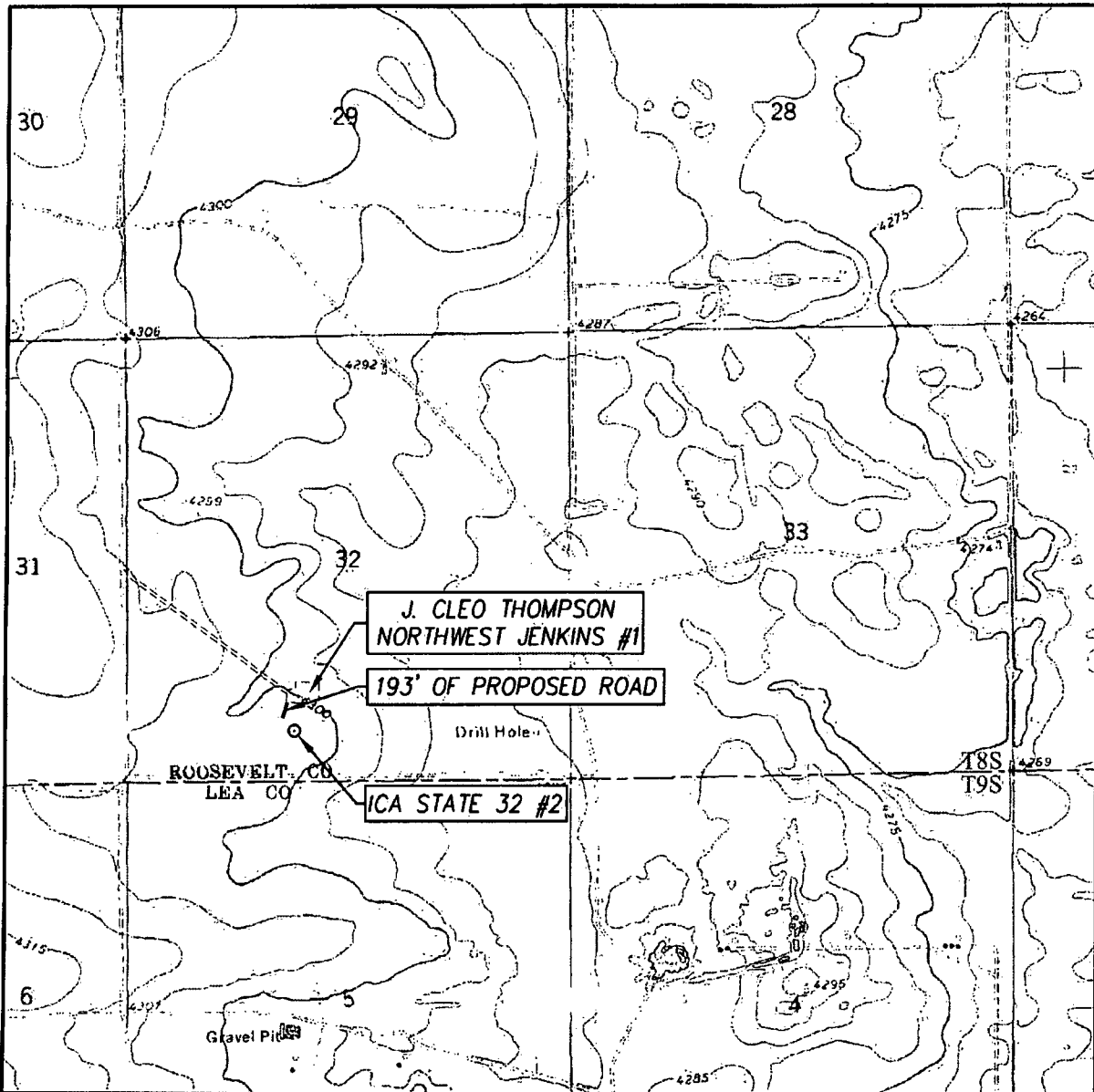
The map displays a grid of numbered sections, likely representing land parcels or survey areas. The sections are arranged in rows and columns, with numbers ranging from 1 to 36. Key features include:

- County Boundary:** A thick black line separates CHAVES COUNTY (top left) from LEA COUNTY (bottom right).
- Roads:** Several roads are labeled, including "SRM.T RD 41" and "SRM.T RD 78".
- Section Numbers:** The grid includes section numbers such as 1 through 36, with some sections further subdivided.
- Markings:** A circle with a dot inside is located near the bottom center, pointing to a label box that reads "ICA STATE 32 #2".
- Other Labels:** Faint labels like "S 200 FT E 100 FT" are visible near the intersection of roads.



PROVIDING SURVEYING SERVICES  
SINCE 1946  
**JOHN WEST SURVEYING COMPANY**  
412 N. DAL PASO  
MOBBS, N.M. 88240  
(575) 393-3117 [www.jwsc.biz](http://www.jwsc.biz)

# LOCATION VERIFICATION MAP



SCALE: 1" = 2000'

CONTOUR INTERVAL:  
MILNESAND SW, N.M. - 5'

SEC. 32 TWP. 8-S RGE. 34-E

SURVEY N.M.P.M.

COUNTY ROOSEVELT STATE NEW MEXICO

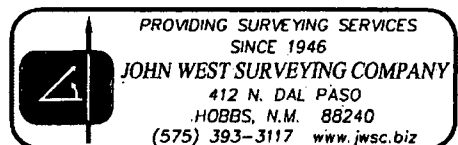
DESCRIPTION 620' FSL & 1980' FWL

ELEVATION 4304'

OPERATOR ICA ENERGY OPERATING, LLC

LEASE ICA STATE 32

U.S.G.S. TOPOGRAPHIC MAP  
MILNESAND SW, N.M.



A 10x10 grid with a coordinate system. The horizontal axis is labeled 'X' and the vertical axis is labeled 'Y'. The grid contains several numbers and a name. The numbers are: 3 0, 2 9, 2, 3 1, 3 2, 3, 6, 5. The name 'R: SAN ANDRES' is written in the grid.