

DISTRICT I  
1826 N. French Dr., Hobbs, NM 88240  
Phone (575) 393-8181 Fax: (575) 393-0720

DISTRICT II  
811 S. First St., Artesia, NM 88210  
Phone (575) 748-1283 Fax: (575) 748-9720

DISTRICT III  
1000 Rio Brazos Rd., Aztec, NM 87410  
Phone (505) 334-8178 Fax: (505) 334-8170

DISTRICT IV  
1220 S. St. Francis Dr., Santa Fe, NM 87505  
Phone (505) 476-3480 Fax: (505) 476-3482

State of New Mexico  
Energy, Minerals and Natural Resources Department

Form C-102  
Revised August 1, 2011

Submit one copy to appropriate  
District Office

OIL CONSERVATION DIVISION

1220 South St. Francis Dr.  
Santa Fe, New Mexico 87505

WELL LOCATION AND ACREAGE DEDICATION PLAT

☐ AMENDED REPORT

API Number 30-025-40690	Pool Code 17644 97964	Pool Name WC 025 G-07 Lower 5243225C; Bone Spring, West
Property Code 39348	Property Name DOUBLE X 25 FEDERAL	Well Number 4
OGRID No. 215099	Operator Name CIMAREX ENERGY CO.	Elevation 3572'

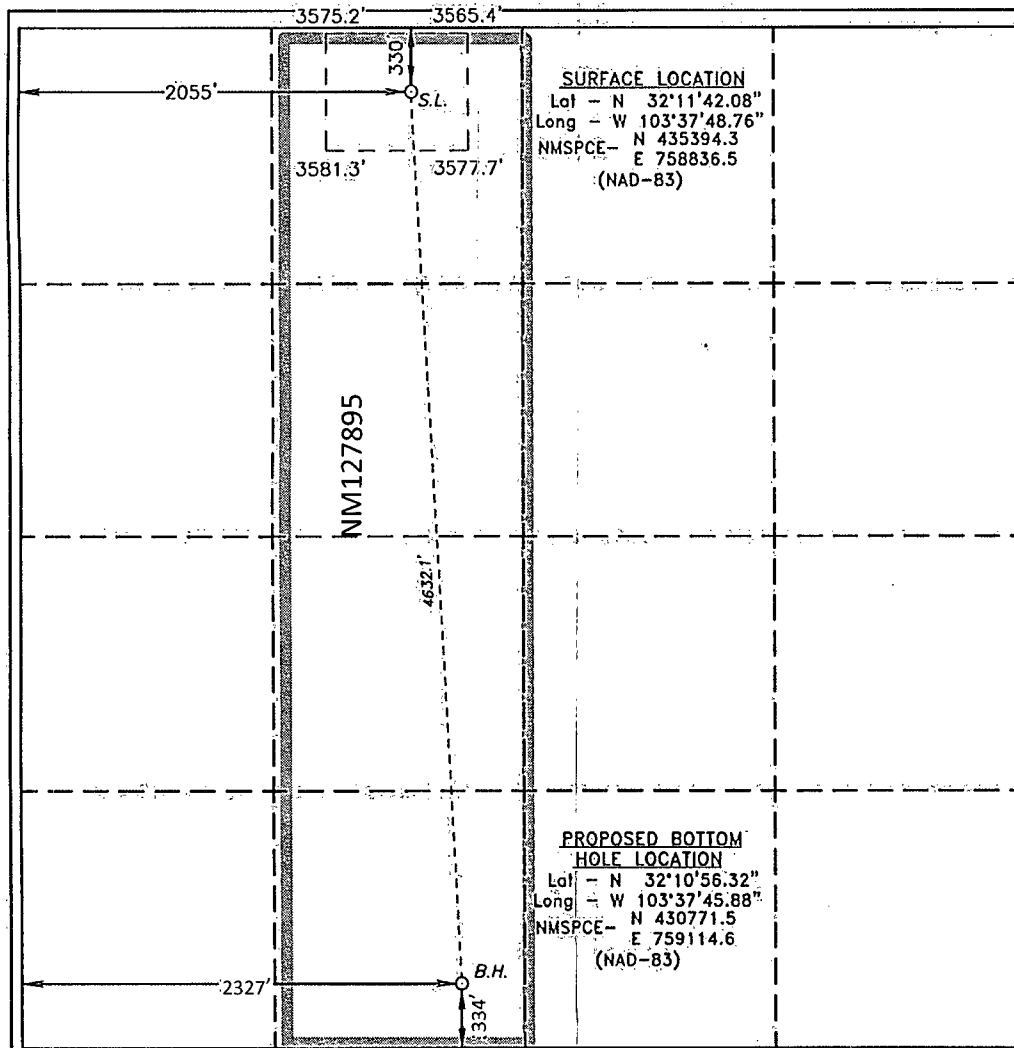
Surface Location

UL or lot No.	Section	Township	Range	Lot Idn	Feet from the	North/South line	Feet from the	East/West line	County
C	25	24 S	32 E		330	NORTH	2055	WEST	LEA

Bottom Hole Location If Different From Surface

UL or lot No.	Section	Township	Range	Lot Idn	Feet from the	North/South line	Feet from the	East/West line	County
N	25	24 S	32 E		334 1946	SOUTH	2327	WEST	LEA
Dedicated Acres 160	Joint or Infill	Consolidation Code	Order No.						

NO ALLOWABLE WILL BE ASSIGNED TO THIS COMPLETION UNTIL ALL INTERESTS HAVE BEEN CONSOLIDATED  
OR A NON-STANDARD UNIT HAS BEEN APPROVED BY THE DIVISION



SURFACE LOCATION

Lat - N 32°11'42.08"  
Long - W 103°37'48.76"  
NMSPCE- N 435394.3  
E 758836.5  
(NAD-83)

PROPOSED BOTTOM  
HOLE LOCATION

Lat - N 32°10'56.32"  
Long - W 103°37'45.88"  
NMSPCE- N 430771.5  
E 759114.6  
(NAD-83)

OPERATOR CERTIFICATION

I hereby certify that the information contained herein is true and complete to the best of my knowledge and belief, and that this organization either owns a working interest or unleased mineral interest in the land including the proposed bottom hole location or has a right to drill this well at this location pursuant to a contract with an owner of such a mineral or working interest, or to a voluntary pooling agreement or a compulsory pooling order heretofore entered by the division.

Signature Paula Brunson Date 12/12/2012

Printed Name Paula Brunson  
Email Address pbrunson@cimarex.com

SURVEYOR CERTIFICATION

I hereby certify that the well location shown on this plat was plotted from field notes of actual surveys made by me or under my supervision, and that the same is true and correct to the best of my belief.

Date Surveyed FEBRUARY 10, 2012	Signature of Professional Surveyor <u>Gary L. Jones</u>
Certificate No. <u>26202</u>	Surveyor No. <u>7977</u>
BASIN SURVEYS 26202	