

DISTRICT I
1625 N. French Dr., Hobbs, NM 88240
Phone (575) 393-8181 Fax: (575) 393-0720

DISTRICT II
811 S. First St., Artesia, NM 88210
Phone (505) 748-1283 Fax: (505) 748-9720

DISTRICT III
1000 Rio Brazos Rd., Aztec, NM 87410
Phone (505) 334-8178 Fax: (505) 334-8170

DISTRICT IV
1220 S. St. Francis Dr., Santa Fe, NM 87505
Phone (505) 476-3460 Fax: (505) 476-3462

State of New Mexico
HOBBS OCD Energy, Minerals and Natural Resources Department

Form C-102
Revised August 1, 2011

Submit one copy to appropriate
District Office

OIL CONSERVATION DIVISION
1220 South St. Francis Dr.
Santa Fe, New Mexico 87505

JAN 10 2013

RECEIVED WELL LOCATION AND ACREAGE DEDICATION PLAT

☐ AMENDED REPORT

API Number 30-025-40787	Pool Code 22900	Pool Name EWICE; B-T-D, NORTH
Property Code 22503	Property Name NORTHEAST DRINKARD UNIT	Well Number 366
OGRID No. 873	Operator Name APACHE CORPORATION	Elevation 3466'

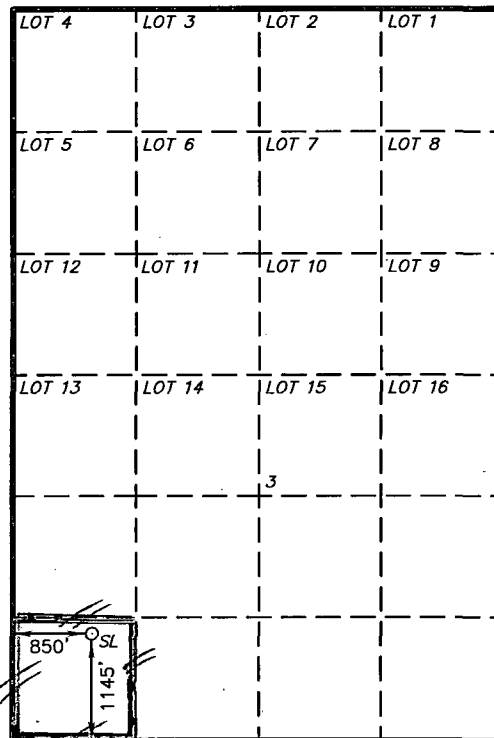
Surface Location

UL or lot No. M	Section 3	Township 21 S	Range 37 E	Lot Idn	Feet from the 1145	North/South line SOUTH	Feet from the 850	East/West line WEST	County LEA
---------------------------	---------------------	-------------------------	----------------------	---------	------------------------------	----------------------------------	-----------------------------	-------------------------------	----------------------

Bottom Hole Location If Different From Surface

UL or lot No.	Section	Township	Range	Lot Idn	Feet from the	North/South line	Feet from the	East/West line	County
Dedicated Acres 40	Joint or Infill	Consolidation Code	Order No.						

NO ALLOWABLE WILL BE ASSIGNED TO THIS COMPLETION UNTIL ALL INTERESTS HAVE BEEN CONSOLIDATED
OR A NON-STANDARD UNIT HAS BEEN APPROVED BY THE DIVISION



SURFACE LOCATION
Lat - N 32°30'13.88"
Long - W 103°09'24.21"
NMSPCE- N 549034.700
E 904074.447
(NAD-83)
Lat - N 32°30'13.44"
Long - W 103°09'22.51"
NMSPCE- N 548974.646
E 862890.521
(NAD-27)

OPERATOR CERTIFICATION

I hereby certify that the information contained herein is true and complete to the best of my knowledge and belief, and that this organization either owns a working interest or unleased mineral interest in the land including the proposed bottom hole location or has a right to drill this well at this location pursuant to a contract with an owner of such a mineral or working interest, or to a voluntary pooling agreement or a compulsory pooling order heretofore entered by the division.

Vicki Brown 9/24/12
Signature Date
Vicki Brown
Printed Name
Vicki.brown@apachecorp.com
Email Address

SURVEYOR CERTIFICATION

I hereby certify that the well location shown on this plat was plotted from field notes of actual surveys made by me or under my supervision, and that the same is true and correct to the best of my belief.

SEPTEMBER 10 2012
Date Surveyed
Signature & Seal of Professional Surveyor
Certificate No. **Gary L. Jones 7977**
BASIN SURVEYS 27313