

District I  
1625 N. French Dr., Hobbs, NM 88240  
Phone: (575) 393-6161 Fax: (575) 393-0720  
District II  
811 S. First St., Artesia, NM 88210  
Phone: (575) 748-1283 Fax: (575) 748-9720  
District III  
1000 Rio Brazos Road, Aztec, NM 87410  
Phone: (505) 334-6178 Fax: (505) 334-6170  
District IV  
1220 S. St. Francis Dr., Santa Fe, NM 87505  
Phone: (505) 476-3460 Fax: (505) 476-3462

State of New Mexico

Form C-101  
Revised November 14, 2012

Energy Minerals and Natural Resources  
Oil Conservation Division

☐ AMENDED REPORT

JAN 17 2013  
1220 South St. Francis Dr.  
Santa Fe, NM 87505

RECEIVED

APPLICATION FOR PERMIT TO DRILL, RE-ENTER, DEEPEN, PLUGBACK, OR ADD A ZONE

1. Operator Name and Address COG Operating LLC 2208 West Main Street Artesia, NM 88210		2. OGRID Number 229137 30-025-40933	
3. Property Code 39033	4. Property Name Wild Cobra 1 State SWD		5. Well No 1

7. Surface Location

UL - Lot	Section	Township	Range	Lot Idn	Feet from	N/S Line	Feet From	E/W Line	County
3	1	19S	34E		660	North	1980	West	Lea

8. Proposed Bottom Hole Location

UL - Lot	Section	Township	Range	Lot Idn	Feet from	N/S Line	Feet From	E/W Line	County

9. Pool Information

Pool Name	Pool Code
SWD; Delaware	96100

Additional Well Information

11. Work Type New Well	12. Well Type SWD	13. Cable/Rotary	14. Lease Type State	15. Ground Level Elevation 3962.7'
16. Multiple N	17. Proposed Depth 8000'	18. Formation Delaware	19. Contractor	20. Spud Date 1/20/2013
Depth to Ground water		Distance from nearest fresh water well		Distance to nearest surface water

21. Proposed Casing and Cement Program

Type	Hole Size	Casing Size	Casing Weight/ft	Setting Depth	Sacks of Cement	Estimated TOC
Surface	17.5	13.375	54.5	1900	1200	
Intmrd	12.25	9.625	36	3550	850	
Open Hole	8.75	7	26	8000	500	3050

Casing/Cement Program: Additional Comments

Plan to drill a 17-1/2" hole to 1900' with Fresh Water. Run 13-3/8", 54.5#, J-55 csg and cmt to surface. Drill 12-1/4" hole to 3550' with Brine, and run 9-5/8", 36# J55 and cement to surface. Drill 8-3/4" hole to 8000' with cut-brine and run 7", 26#, J55 and tie back cement 500' into previous casing string.

SWD-1377

22. Proposed Blowout Prevention Program

Type	Working Pressure	Test Pressure	Date	Manufacturer
Double Ram	3000	3000		Cameron

Permit Expires 2 Years From Approval  
Date Unless Drilling Underway

23. I hereby certify that the information given above is true and complete to the best of my knowledge and belief. I further certify that I have complied with 19.15.14.9 (A) NMAC <input type="checkbox"/> and/or 19.15.14.9 (B) NMAC <input type="checkbox"/> , if applicable. Signature: <i>Mayte Reyes</i>		OIL CONSERVATION DIVISION	
Printed name: Mayte Reyes		Approved By: <i>[Signature]</i>	
Title: Regulatory Analyst		Title: Petroleum Engineer	
E-mail Address: mreyes1@concho.com		Approved Date: JAN 25 2013	
Date: 1/17/2013		Expiration Date: JAN 25 2015	
Phone: 575-748-6945		Conditions of Approval Attached	

HOBBS OCD

## DISTRICT I

1625 N. FRENCH DR., HOBBS, NM 88240

State of New Mexico  
Energy, Minerals and Natural Resources Department

JAN 23 2013

Form C-102

Revised October 12, 2010

## DISTRICT II

1301 W. GRAND AVENUE, ARTESIA, NM 88210

## OIL CONSERVATION DIVISION

Submit to Appropriate District Office

11885 SOUTH ST. FRANCIS DR.

RECEIVED

State Lease - 4 Copies

## DISTRICT III

1000 RIO BRAZOS RD., AZTEC, NM 87410

Santa Fe, New Mexico 87505

Fee Lease - 3 Copies

## DISTRICT IV

11000 S. ST. FRANCIS DR., SANTA FE, NM 87505

## WELL LOCATION AND ACREAGE DEDICATION PLAT

☐ AMENDED REPORT

API Number <b>30-025-40933</b>	Pool Code <b>96100</b>	Pool Name <b>SWD; Delaware</b>
Property Code <b>39653</b>	Property Name <b>WILD COBRA 1 STATE SWD</b>	Well Number <b>1</b>
OGRID No. <b>229137</b>	Operator Name <b>COG OPERATING, LLC</b>	Elevation <b>3962.2'</b>

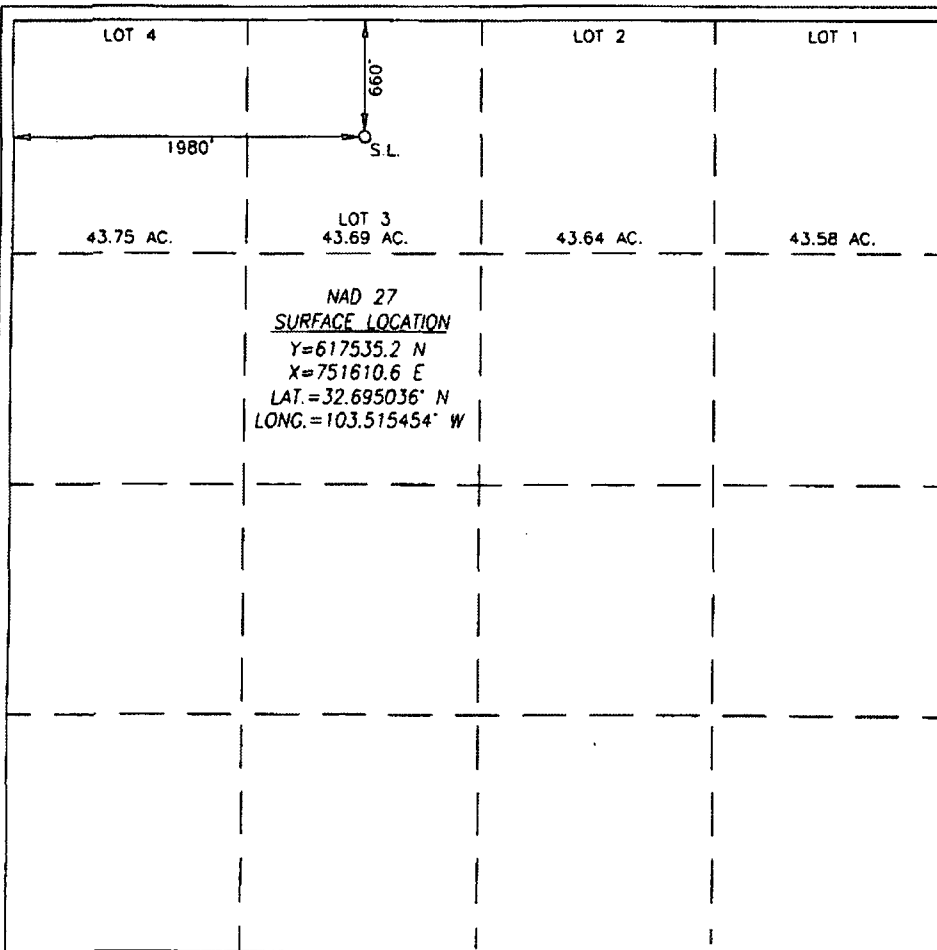
## Surface Location

UL or lot No.	Section	Township	Range	Lot Idn	Feet from the	North/South line	Feet from the	East/West line	County
3	1	19-S	34-E		660	NORTH	1980	WEST	LEA

## Bottom Hole Location If Different From Surface

UL or lot No.	Section	Township	Range	Lot Idn	Feet from the	North/South line	Feet from the	East/West line	County
Dedicated Acres	Joint or Infill	Consolidation Code	Order No.	<b>SWD-1377</b>					

NO ALLOWABLE WILL BE ASSIGNED TO THIS COMPLETION UNTIL ALL INTERESTS HAVE BEEN CONSOLIDATED  
OR A NON-STANDARD UNIT HAS BEEN APPROVED BY THE DIVISION



## OPERATOR CERTIFICATION

I hereby certify that the information herein is true and complete to the best of my knowledge and belief, and that this organization either owns a working interest or undivided mineral interest in the land including the proposed bottom hole location or has a right to drill this well at this location pursuant to a contract with an owner of such mineral or working interest, or to a voluntary pooling agreement or a compulsory pooling order heretofore entered by the division.

*Melanie Parker* 1/17/13  
Signature Date  
*Melanie Parker*  
Printed Name

## SURVEYOR CERTIFICATION

I hereby certify that the well location shown on this plat was plotted from field notes of actual surveys made by me or under my supervision, and that the same is true and correct to the best of my belief.

JANUARY 14, 2013

Date Surveyed

Signature &amp; Seal of Professional Surveyor

*Chad L Harcrow* 1/16/13  
CHAD L HARCROW  
NEW MEXICO  
17777  
LICENSED PROFESSIONAL SURVEYOR

Certificate No. CHAD HARCROW 17777

W.O. # 13-24

DRAWN BY: CH

## **Wild Cobra 1 State SWD 1**

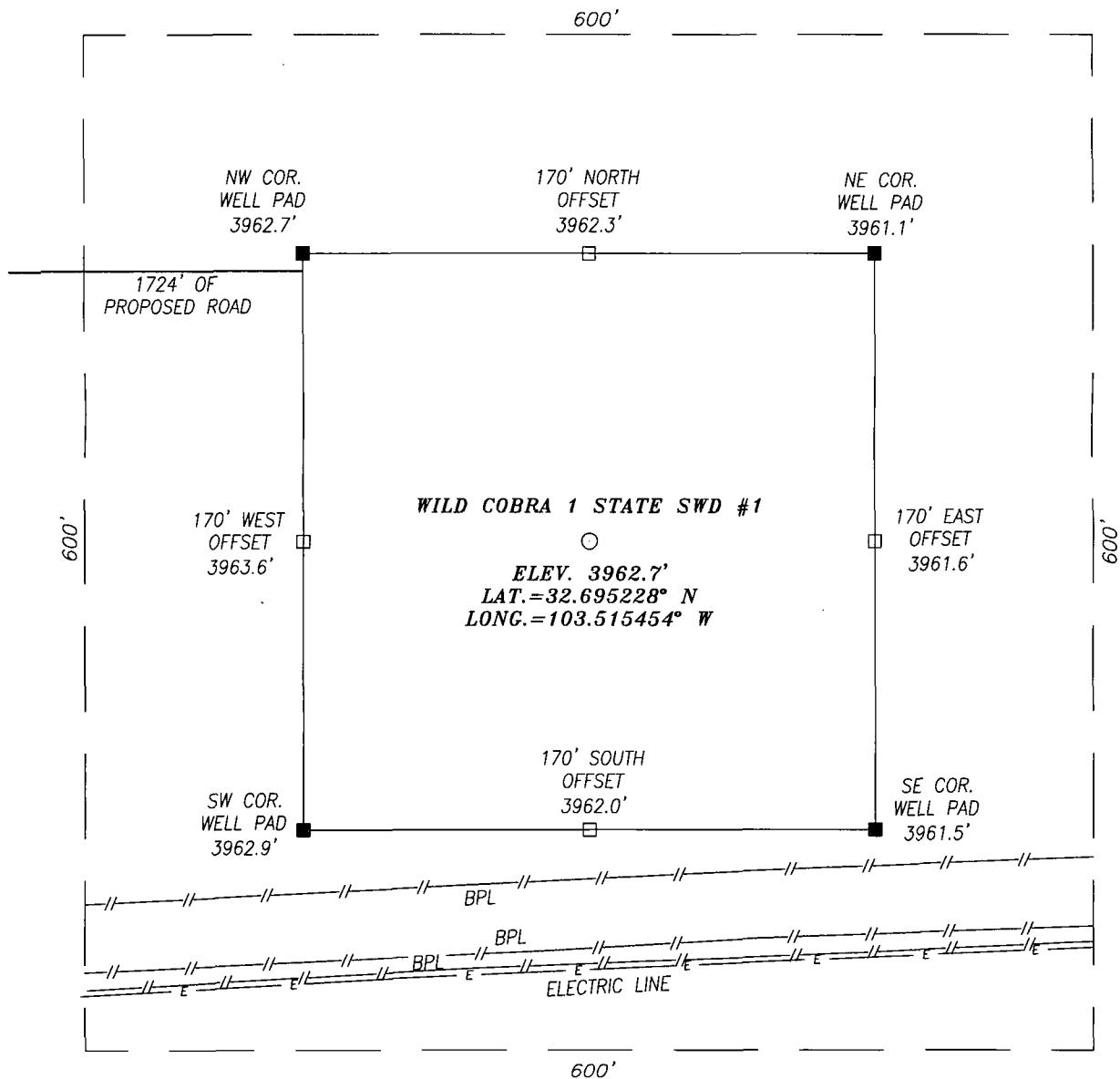
	<b>Hole Size</b>	<b>Casing</b>	<b>Wt</b>	<b>Depth</b>	<b>Cmt</b>	<b>TOC</b>
<b>Surface</b>	<b>17.5</b>	<b>13.375</b>	<b>54.5</b>	<b>1900'</b>	<b>1200</b>	<b>0</b>
<b>Intrmd</b>	<b>12.25</b>	<b>9.625</b>	<b>36</b>	<b>3550'</b>	<b>850</b>	<b>0</b>
<b>Open Hole</b>	<b>8.75</b>	<b>7</b>	<b>26</b>	<b>8000'</b>	<b>500</b>	<b>3050'</b>

Plan to drill a 17-1/2" hole to 1900' with Fresh Water. Run 13-3/8", 54.5#, J-55 csg and cmt to surface. Drill 12-1/4" hole to 3550' with Brine, and run 9-5/8", 36# J55 and cement to surface. Drill 8-3/4" hole to 8000' with cut-brine and run 7", 26#, J55 and tie back cement 500' into previous casing string.

## **Well Control**

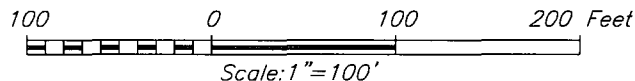
<b>Type</b>	<b>Pressure</b>	<b>Test</b>	<b>Manufacture</b>
<b>Double Ram</b>	<b>3000</b>	<b>3000</b>	<b>Cameron</b>

SECTION 1, TOWNSHIP 19 SOUTH, RANGE 34 EAST, N.M.P.M.,  
LEA COUNTY NEW MEXICO

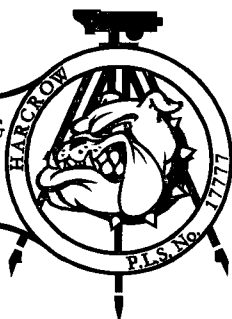


DIRECTIONS TO LOCATION

HEADING EAST ON HWY. 529, TURN RIGHT (SOUTH) APPROX. 300' PAST MM 23 ONTO A CALICHE LEASE ROAD. FOLLOW ROAD FOR APPROX. 400 FEET AND WELL IS APPROX. 1724' TO THE LEFT (EAST).



**HARCROW SURVEYING**  
1107 WATSON, ARTESIA N.M. 88210  
PH: (575) 513-2570  
FAX: (575) 746-2808  
EST. 2007



**COG OPERATING, LLC**

**WILD COBRA 1 STATE SWD #1 WELL**  
LOCATED 590 FEET FROM THE NORTH LINE  
AND 1980 FEET FROM THE WEST LINE OF SECTION 1,  
TOWNSHIP 19 SOUTH, RANGE 34 EAST, N.M.P.M.,  
LEA COUNTY, NEW MEXICO

SURVEY DATE: NOVEMBER 14, 2012	PAGE: 1 OF 1
DRAFTING DATE: NOVEMBER 18, 2012	
APPROVED BY: CH	DRAWN BY: LA
	FILE: 12-185

The map is a topographic representation of a region with various geographical features. Key elements include:

- Title:** "LOCATION VERIFICATION MAP" is prominently displayed at the top center.
- Proposed Road:** A horizontal line segment is labeled "1724' OF PROPOSED ROAD".
- Well Location:** A specific point is identified as "WILD COBRA 1 STATE SWD #1".
- Infrastructure:** Several "PIPELINE" lines are shown crossing the map.
- Other Features:** The map includes labels for "Gravel Pit", "Drill Hole", "Oil Well", "Electric Well", "Frier Camp", "BM 3967", "T185", "T195", "3893T", "Thru Windmill", and "Ow".
- Topography:** Contour lines indicate elevation, with labels such as 3993, 3972, 3971, 3950, 3946, 3943, 3930, 3927, 3926, 3925, 3924, 3923, 3922, 3921, 3920, 3919, 3918, 3917, 3916, 3915, 3914, 3913, 3912, 3911, 3910, 3909, 3908, 3907, 3906, 3905, 3904, 3903, 3902, 3901, 3900, 3899, 3898, 3897, 3896, 3895, 3894, 3893, 3892, 3891, 3890, 3889, 3888, 3887, 3886, 3885, 3884, 3883, 3882, 3881, 3880, 3879, 3878, 3877, 3876, 3875, 3874, 3873, 3872, 3871, 3870, 3869, 3868, 3867, 3866, 3865, 3864, 3863, 3862, 3861, 3860, 3859, 3858, 3857, 3856, 3855, 3854, 3853, 3852, 3851, 3850, 3849, 3848, 3847, 3846, 3845, 3844, 3843, 3842, 3841, 3840, 3839, 3838, 3837, 3836, 3835, 3834, 3833, 3832, 3831, 3830, 3829, 3828, 3827, 3826, 3825, 3824, 3823, 3822, 3821, 3820, 3819, 3818, 3817, 3816, 3815, 3814, 3813, 3812, 3811, 3810, 3809, 3808, 3807, 3806, 3805, 3804, 3803, 3802, 3801, 3800, 3799, 3798, 3797, 3796, 3795, 3794, 3793, 3792, 3791, 3790, 3789, 3788, 3787, 3786, 3785, 3784, 3783, 3782, 3781, 3780, 3779, 3778, 3777, 3776, 3775, 3774, 3773, 3772, 3771, 3770, 3769, 3768, 3767, 3766, 3765, 3764, 3763, 3762, 3761, 3760, 3759, 3758, 3757, 3756, 3755, 3754, 3753, 3752, 3751, 3750, 3749, 3748, 3747, 3746, 3745, 3744, 3743, 3742, 3741, 3740, 3739, 3738, 3737, 3736, 3735, 3734, 3733, 3732, 3731, 3730, 3729, 3728, 3727, 3726, 3725, 3724, 3723, 3722, 3721, 3720, 3719, 3718, 3717, 3716, 3715, 3714, 3713, 3712, 3711, 3710, 3709, 3708, 3707, 3706, 3705, 3704, 3703, 3702, 3701, 3700, 3699, 3698, 3697, 3696, 3695, 3694, 3693, 3692, 3691, 3690, 3689, 3688, 3687, 3686, 3685, 3684, 3683, 3682, 3681, 3680, 3679, 3678, 3677, 3676, 3675, 3674, 3673, 3672, 3671, 3670, 3669, 3668, 3667, 3666, 3665, 3664, 3663, 3662, 3661, 3660, 3659, 3658, 3657, 3656, 3655, 3654, 3653, 3652, 3651, 3650, 3649, 3648, 3647, 3646, 3645, 3644, 3643, 3642, 3641, 3640, 3639, 3638, 3637, 3636, 3635, 3634, 3633, 3632, 3631, 3630, 3629, 3628, 3627, 3626, 3625, 3624, 3623, 3622, 3621, 3620, 3619, 3618, 3617, 3616, 3615, 3614, 3613, 3612, 3611, 3610, 3609, 3608, 3607, 3606, 3605, 3604, 3603, 3602, 3601, 3600, 3599, 3598, 3597, 3596, 3595, 3594, 3593, 3592, 3591, 3590, 3589, 3588, 3587, 3586, 3585, 3584, 3583, 3582, 3581, 3580, 3579, 3578, 3577, 3576, 3575, 3574, 3573, 3572, 3571, 3570, 3569, 3568, 3567, 3566, 3565, 3564, 3563, 3562, 3561, 3560, 3559, 3558, 3557, 3556, 3555, 3554, 3553, 3552, 3551, 3550, 3549, 3548, 3547, 3546, 3545, 3544, 3543, 3542, 3541, 3540, 3539, 3538, 3537, 3536, 3535, 3534, 3533, 3532, 3531, 3530, 3529, 3528, 3527, 3526, 3525, 3524, 3523, 3522, 3521, 3520, 3519, 3518, 3517, 3516, 3515, 3514, 3513, 3512, 3511, 3510, 3509, 3508, 3507, 3506, 3505, 3504, 3503, 3502, 3501, 3500, 3499, 3498, 3497, 3496, 3495, 3494, 3493, 3492, 3491, 3490, 3489, 3488, 3487, 3486, 3485, 3484, 3483, 3482, 3481, 3480, 3479, 3478, 3477, 3476, 3475, 3474, 3473, 3472, 3471, 3470, 3469, 3468, 3467, 3466, 3465, 3464, 3463, 3462, 3461, 3460, 3459, 3458, 3457, 3456, 3455, 3454, 3453, 3452, 3451, 3450, 3449, 3448, 3447, 3446, 3445, 3444, 3443, 3442, 3441, 3440, 3439, 3438, 3437, 3436, 3435, 3434, 3433, 3432, 3431, 3430, 3429, 3428, 3427, 3426, 3425, 3424, 3423, 3422, 3421, 3420, 3419, 3418, 3417, 3416, 3415, 3414, 3413, 3412, 3411, 3410, 3409, 3408, 3407, 3406, 3405, 3404, 3403, 3402, 3401, 3400, 3399, 3398, 3397, 3396, 3395, 3394, 3393, 3392, 3391, 3390, 3389, 3388, 3387, 3386, 3385, 3384, 3383, 3382, 3381, 3380, 3379, 3378, 3377, 3376, 3375, 3374, 3373, 3372, 3371, 3370, 3369, 3368, 3367, 3366, 3365, 3364, 3363, 3362, 3361, 3360, 3359, 3358, 3357, 3356, 3355, 3354, 3353, 3352, 3351, 3350, 3349, 3348, 3347, 3346, 3345, 3344, 3343, 3342, 3341, 3340, 3339, 3338, 3337, 3336, 3335, 3334, 3333, 3332, 3331, 3330, 3329, 3328, 3327, 3326, 3325, 3324, 3323, 3322, 3321, 3320, 3319, 3318, 3317, 3316, 3315, 3314, 3313, 3312, 3311, 3310, 3309, 3308, 3307, 3306, 3305, 3304, 3303, 3302, 3301, 3300, 3299, 3298, 3297, 3296, 329

# VICINITY MAP

