

District I  
1625 N. French Dr., Hobbs, NM 88240  
Phone: (575) 393-6161 Fax: (575) 393-0720

District II  
811 S. First St., Artesia, NM 88210  
Phone: (575) 748-1283 Fax: (575) 748-9720

District III  
1000 Rio Brazos Road, Aztec, NM 87410  
Phone: (505) 334-6178 Fax: (505) 334-6170

District IV  
1220 S. St. Francis Dr., Santa Fe, NM 87505  
Phone: (505) 476-3460 Fax: (505) 476-3462

# State of New Mexico

Form C-101  
Revised November 14, 2012

**HOBBES OGD** Energy Minerals and Natural Resources  
**Oil Conservation Division**  
**1220 South St. Francis Dr.**  
**Santa Fe, NM 87505**

☐ AMENDED REPORT

JAN 24 2013

RECEIVED

## APPLICATION FOR PERMIT TO DRILL, RE-ENTER, DEEPEN, PLUGBACK, OR ADD A ZONE

1. Operator Name and Address COG Operating LLC 2208 West Main Street Artesia, NM 88210		2. OGRID Number 229137 30-025-40950
3. Property Code 38681	4. Property Name Corazon State Unit	5. Well No 8H

### 7. Surface Location

UL - Lot	Section	Township	Range	Lot Idn	Feet from	N/S Line	Feet From	E/W Line	County
B	10	21S	33E		100	North	1980	East	Lea

### 8. Proposed Bottom Hole Location

UL - Lot	Section	Township	Range	Lot Idn	Feet from	N/S Line	Feet From	E/W Line	County
O	10	21S	33E		330	South	1980	East	Lea

### 9. Pool Information

Pool Name	Pool Code
Wildcat; Bone Spring	97895

### Additional Well Information

11. Work Type New Well	12. Well Type Oil	13. Cable/Rotary	14. Lease Type State	15. Ground Level Elevation 3821.5'
16. Multiple N	17. Proposed Depth 18800'	18. Formation Bone Spring	19. Contractor	20. Spud Date 1/29/2013
Depth to Ground water		Distance from nearest fresh water well		Distance to nearest surface water

### 21. Proposed Casing and Cement Program

Type	Hole Size	Casing Size	Casing Weight/ft	Setting Depth	Sacks of Cement	Estimated TOC
Surface	17.5	13.375	54.5	1900	1100	
Intrmd	12.25	9.625	36	5500	1400	
Open Hole	7.875	5.5	17	18800	1600	5300

### Casing/Cement Program: Additional Comments

Plan to drill a 17-1/2" hole to 1900' with Fresh Water. Run 13-3/8", 54.5#, J-55 csg and cmt to surface. Drill 12-1/4" hole to 5500' with Brine, and run 9-5/8", 36# J55(40# f/3500' - 5500') and cement to surface. Drill 7-7/8" hole with cut brine to 11,600' then drill 7-7/8" lateral to approx 18,800' MD (11,615' TVD). Run 5-1/2", 17#, P-110 csg and cement to 5300'.

### 22. Proposed Blowout Prevention Program

Type	Working Pressure	Test Pressure	Manufacturer
Double Ram	3000	3000	Cameron

23. I hereby certify that the information given above is true and complete to the best of my knowledge and belief.

I further certify that I have complied with 19.15.14.9 (A) NMAC ☒ and/or 19.15.14.9 (B) NMAC ☒ if applicable.

Signature: *Mayte Reyes*

Printed name: Mayte Reyes

Title: Regulatory Analyst

E-mail Address: mreyes1@concho.com

Date: 1/23/2013

Phone: 575-748-6945

### OIL CONSERVATION DIVISION

Approved By:

Title: PETROLEUM ENGINEER

Approved Date: JAN 31 2013 Expiration Date:

Conditions of Approval Attached

FEB 04 2013

DISTRICT I  
1625 N. FRENCH DR., HOBBS, NM 88240

State of New Mexico  
Energy, Minerals and Natural Resources Department

HOBBS OGD Form C-102  
Revised October 12, 2010  
Submit to Appropriate District Office  
State Lease - 4 Copies  
Fee Lease - 3 Copies

DISTRICT II  
1301 W. GRAND AVENUE, ARTESIA, NM 88210

OIL CONSERVATION DIVISION  
11885 SOUTH ST. FRANCIS DR.  
Santa Fe, New Mexico 87505

DISTRICT III  
1000 RIO BRAZOS RD., AZTEC, NM 87410

DISTRICT IV  
11885 S. ST. FRANCIS DR., SANTA FE, NM 87505

WELL LOCATION AND ACREAGE DEDICATION PLAT RECEIVED AMENDED REPORT

API Number 30-025- <b>40950</b>	Pool Code 97895	Pool Name Wildcat G-08 S213304D; Bone Spring
Property Code 38601	Property Name CORAZON STATE UNIT	Well Number 8H
GRID No. 229137	Operator Name COG OPERATING, LLC	Elevation 3821.5'

Surface Location

UL or lot No.	Section	Township	Range	Lot Idn	Feet from the	North/South line	Feet from the	East/West line	County
B	10	21-S	33-E		100	NORTH	1980	EAST	LEA

Bottom Hole Location If Different From Surface

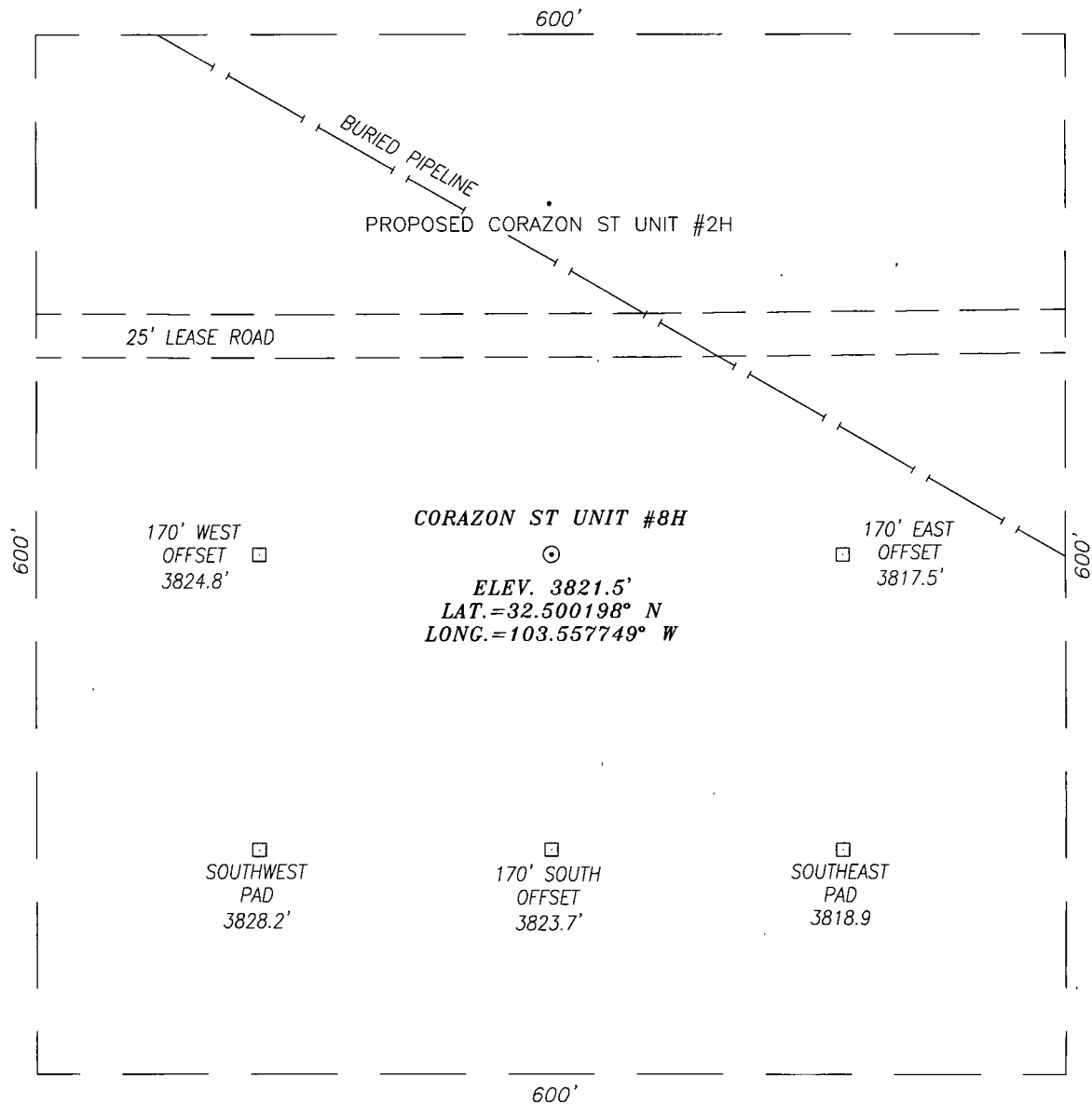
UL or lot No.	Section	Township	Range	Lot Idn	Feet from the	North/South line	Feet from the	East/West line	County
0	10	21-S	33-E		330	SOUTH	1980	EAST	LEA

Dedicated Acres 160.0	Joint or Infill	Consolidation Code	Order No.
--------------------------	-----------------	--------------------	-----------

NO ALLOWABLE WILL BE ASSIGNED TO THIS COMPLETION UNTIL ALL INTERESTS HAVE BEEN CONSOLIDATED  
OR A NON-STANDARD UNIT HAS BEEN APPROVED BY THE DIVISION

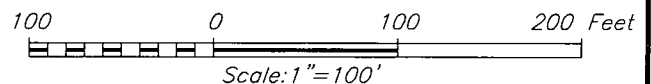
<p><u>N 1/4 CORNER</u> Y=546651.8 N X=738446.1 E</p> <p><u>SURFACE LOCATION</u> Y=546554.3 N X=739115.9 E LAT.=32.500198° N LONG.=103.557749° W</p> <p><u>PROPOSED BOTTOM HOLE LOCATION</u> Y=541703.8 N X=739160.6 E LAT.=32.486865° N LONG.=103.557718° W</p> <p><u>S 1/4 CORNER</u> Y=541372.2 N X=738489.6 E</p>	<p>100' S.L.</p> <p>1980'</p> <p>1/16 CORNER Y=546656.6 N X=739770.4 E</p> <p>GRID AZ. - 179°28'14" HORZ. DIST. - 4850.71'</p> <p>330' B.H.</p> <p>1980'</p> <p>1/16 CORNER Y=541375.7 N X=739816.2 E</p>	<p><b>OPERATOR CERTIFICATION</b></p> <p>I hereby certify that the information herein is true and complete to the best of my knowledge and belief, and that this organization either owns a working interest or unleased mineral interest in the land including the proposed bottom hole location or has a right to drill this well at this location pursuant to a contract with an owner of such mineral or working interest, or to a voluntary pooling agreement or a compulsory pooling order heretofore entered by the division.</p> <p><i>Melanie J. Parker</i> 1/23/13 Signature Date Printed Name Melanie J. Parker</p> <p><b>SURVEYOR CERTIFICATION</b></p> <p>I hereby certify that the well location shown on this plat was plotted from field notes of actual surveys made by me or under my supervision, and that the same is true and correct to the best of my belief.</p> <p>OCTOBER 01 2012 Date Surveyed Signature Seal of Professional Surveyor Professional Surveyor 12-135 Certificate No. 17777 2012-037</p>
--	---	--

SECTION 10, TOWNSHIP 21 SOUTH, RANGE 33 EAST, N.M.P.M.,  
LEA COUNTY NEW MEXICO



DIRECTIONS TO LOCATION:

HEADING EAST ON HWY. 176 TURN RIGHT 0.1 MILES PAST MILE MARKER 9  
ONTO A CALICHE LEASE ROAD. CONTINUE FOR APPROX. 2.9 MILES THEN  
TURN RIGHT ONTO A 25' LEASE ROAD, FOLLOW LEASE ROAD FOR APPROX.  
0.2 MILES LOCATION IS APPROX. 125 FEET SOUTH.



**HARCROW SURVEYING**  
1107 WATSON, ARTESIA N.M. 88210  
PH: (575) 513-2570  
FAX: (575) 746-2808  
EST. 2007



**COG OPERATING, LLC**

**CORAZON ST UNIT #8H WELL**  
LOCATED 100 FEET FROM THE NORTH LINE  
AND 1980 FEET FROM THE EAST LINE OF SECTION 10,  
TOWNSHIP 21 SOUTH, RANGE 33 EAST, N.M.P.M.,  
LEA COUNTY, NEW MEXICO

SURVEY DATE: SEPTEMBER 27, 2012	PAGE: 1 OF 1
DRAFTING DATE: OCTOBER 01, 2012	
APPROVED BY: CH	DRAWN BY: DDSI
FILE: 12-135	

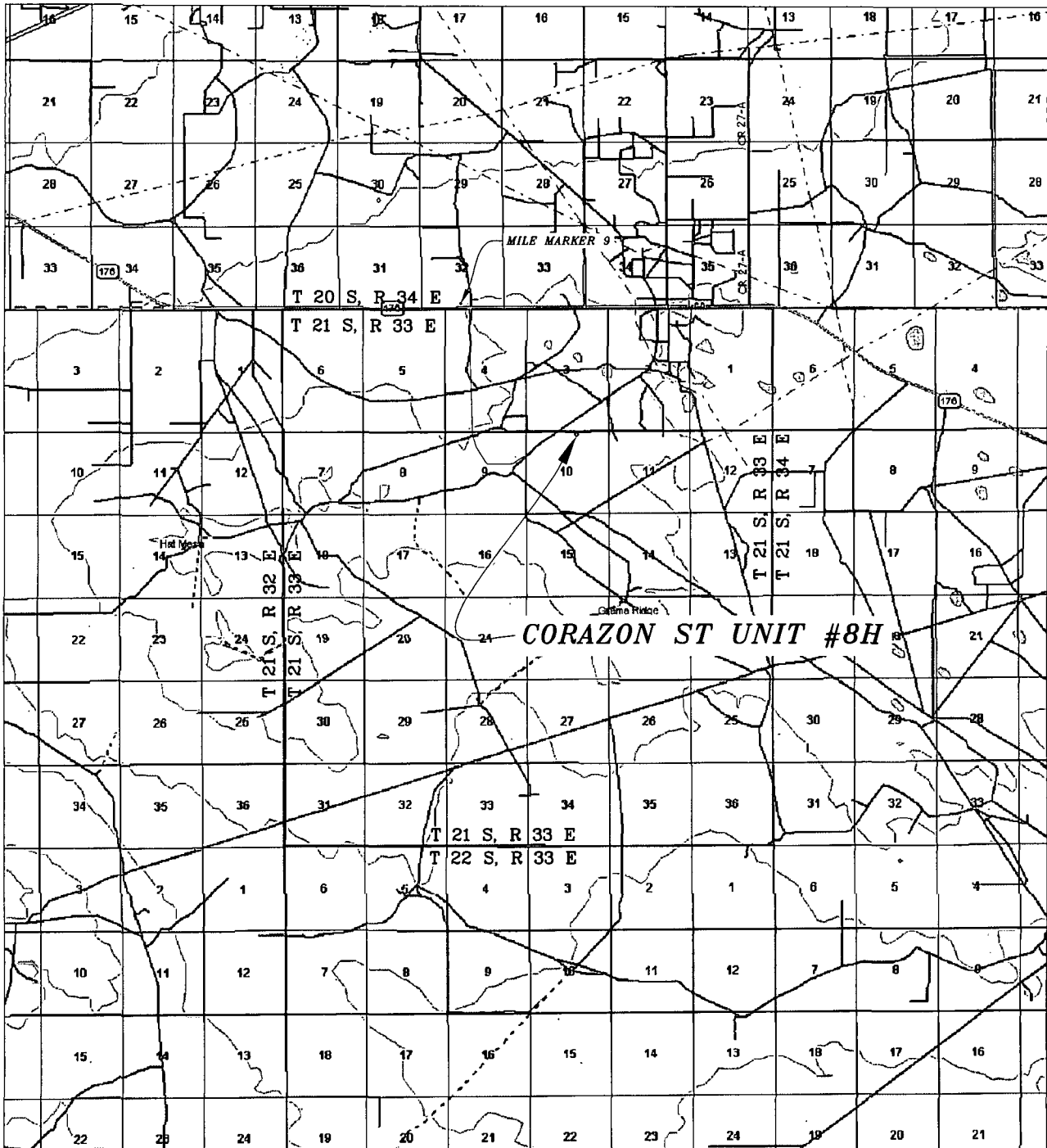
CONTOUR INTERVAL: 10'

**HARCROW SURVEYING**  
1107 WATSON, ARTESIA N.M. 88210  
PH: (575) 513-2570  
FAX: (575) 746-2808  
EST. 2007



SURVEY DATE: SEPTEMBER 27, 2012		PAGE: 1 OF 1
DRAFTING DATE: OCTOBER 01, 2012		
APPROVED BY: CH	DRAWN BY: DDSI	FILE: 12-135

# VICINITY MAP



SEC. 10 TWP. 21-S RGE. 33-E  
 SURVEY N.M.P.M.  
 COUNTY LEA STATE NEW MEXICO  
 DESCRIPTION 100' FNL & 1980' FEL  
 ELEVATION 3821.5'  
 OPERATOR COG OPERATING, LLC  
 LEASE CORAZON ST UNIT

SCALE: 1" = 2 MILES

HARCROW SURVEYING  
 1107 WATSON, ARTESIA N.M. 88210  
 PH: (575) 513-2570  
 FAX: (575) 746-2808  
 EST. 2007



**COG OPERATING, LLC**

SURVEY DATE: SEPTEMBER 27, 2012	PAGE: 1 OF 1
DRAFTING DATE: OCTOBER 01, 2012	
APPROVED BY: CH	DRAWN BY: DDSI FILE: 12-135