

**District I**  
1625 N. French Dr., Hobbs, NM 88240  
Phone: (575) 393-6161 Fax: (575) 393-0720

**District II**  
811 S. First St., Artesia, NM 88210  
Phone: (575) 748-1283 Fax: (575) 748-9720

**District III**  
1000 Rio Brazos Road, Aztec, NM 87410  
Phone: (505) 334-6178 Fax: (505) 334-6170

**District IV**  
1220 S. St. Francis Dr., Santa Fe, NM 87505  
Phone: (505) 476-3460 Fax: (505) 476-3462

State of New Mexico

Form C-101  
Revised November 14, 2012

Energy Minerals and Natural Resources

Oil Conservation Division

1220 South St. Francis Dr.

Santa Fe, NM 87505

☐ AMENDED REPORT

HOBBS OCD

JAN 24 2013

RECEIVED

APPLICATION FOR PERMIT TO DRILL, RE-ENTER, DEEPEN, PLUGBACK, OR ADD A ZONE

1. Operator Name and Address COG Operating LLC 2208 West Main Street Artesia, NM 88210		2. OGRID Number 229137	
3. Property Code 38001		4. API Number 3002540956	
5. Property Name Corazon State Unit		6. Well No 14H	

7. Surface Location

UL - Lot	Section	Township	Range	Lot Idn	Feet from	N/S Line	Feet From	E/W Line	County
M	4	21S	33E		660	South	50	West	Lea

8. Proposed Bottom Hole Location

UL - Lot	Section	Township	Range	Lot Idn	Feet from	N/S Line	Feet From	E/W Line	County
P	4	21S	33E		660	South	330	East	Lea

9. Pool Information

Pool Name	Pool Code
Wildcat; Bone Spring	97895

Additional Well Information

11. Work Type New Well	12. Well Type Oil	13. Cable/Rotary	14. Lease Type State	15. Ground Level Elevation 3776.0'
16. Multiple N	17. Proposed Depth 18780	18. Formation Bone Spring	19. Contractor	20. Spud Date 1/29/2013
Depth to Ground water		Distance from nearest fresh water well		Distance to nearest surface water

21. Proposed Casing and Cement Program

Type	Hole Size	Casing Size	Casing Weight/ft	Setting Depth	Sacks of Cement	Estimated TOC
Surface	17.5	13.375	54.5	1825	1100	
Intrmd	12.25	9.625	36	5500	1400	
Open Hole	7.875	5.5	17	18780	1600	5300

Casing/Cement Program: Additional Comments

Plan to drill a 17-1/2" hole to 1825' with Fresh Water. Run 13-3/8", 54.5#, J-55 csg and cmt to surface. Drill 12-1/4" hole to 5500' with Brine, and run 9-5/8", 36# J55 (40# f/3500 - 5500') and cement to surface. Drill 7-7/8" hole with cut brine to 10,800'. Kick off and drill curve then drill 7-7/8" lateral to approx. 18,780' MD (11,325' TVD). Run 5-1/2", 17#, P-110 csg and cement to 5300'.

22. Proposed Blowout Prevention Program

Type	Working Pressure	Test Pressure	Manufacturer
Double Ram	3000	3000	Cameron

Permit Expires 2 Years From Approval Date Unless Drilling Underway

23. I hereby certify that the information given above is true and complete to the best of my knowledge and belief. I further certify that I have complied with 19.15.14.9 (A) NMAC <input checked="" type="checkbox"/> and/or 19.15.14.9 (B) NMAC <input checked="" type="checkbox"/> , if applicable. Signature: <i>Mayte Reyes</i>		OIL CONSERVATION DIVISION	
Printed name: Mayte Reyes		Approved By: <i>[Signature]</i>	
Title: Regulatory Analyst		Title: PETROLEUM ENGINEER	
E-mail Address: mreyes1@concho.com		Approved Date: JAN 31 2013	
Date: 1/23/2013		Expiration Date:	
Phone: 575-748-6945		Conditions of Approval Attached	

FEB 04 2013

HOBBS OCD

DISTRICT I  
11825 N. FRENCH DR., HOBBS, NM 88240

State of New Mexico  
Energy, Minerals and Natural Resources Department

JAN 24 2013

Form C-102

Revised October 12, 2010

DISTRICT II  
1301 W. GRAND AVENUE, ARTESIA, NM 88210

## OIL CONSERVATION DIVISION RECEIVED

Submit to Appropriate District Office

State Lease - 4 Copies

Fee Lease - 3 Copies

DISTRICT III  
1000 RIO BRAZOS RD., AZTEC, NM 87410

11885 SOUTH ST. FRANCIS DR.  
Santa Fe, New Mexico 87505

DISTRICT IV  
11885 S. ST. FRANCIS DR., SANTA FE, NM 87505

## WELL LOCATION AND ACREAGE DEDICATION PLAT

☐ AMENDED REPORT

API Number 30-025- <b>40956</b>	Pool Code 97895	Pool Name Wildcat G-08 S213304D; Bone Spring
Property Code 38601	Property Name CORAZON STATE UNIT	Well Number 14H
GRID No. 229137	Operator Name COG OPERATING, LLC	Elevation 3776.0'

## Surface Location

UL or lot No.	Section	Township	Range	Lot Idn	Feet from the	North/South line	Feet from the	East/West line	County
M	4	21-S	33-E		660	SOUTH	50	WEST	LEA

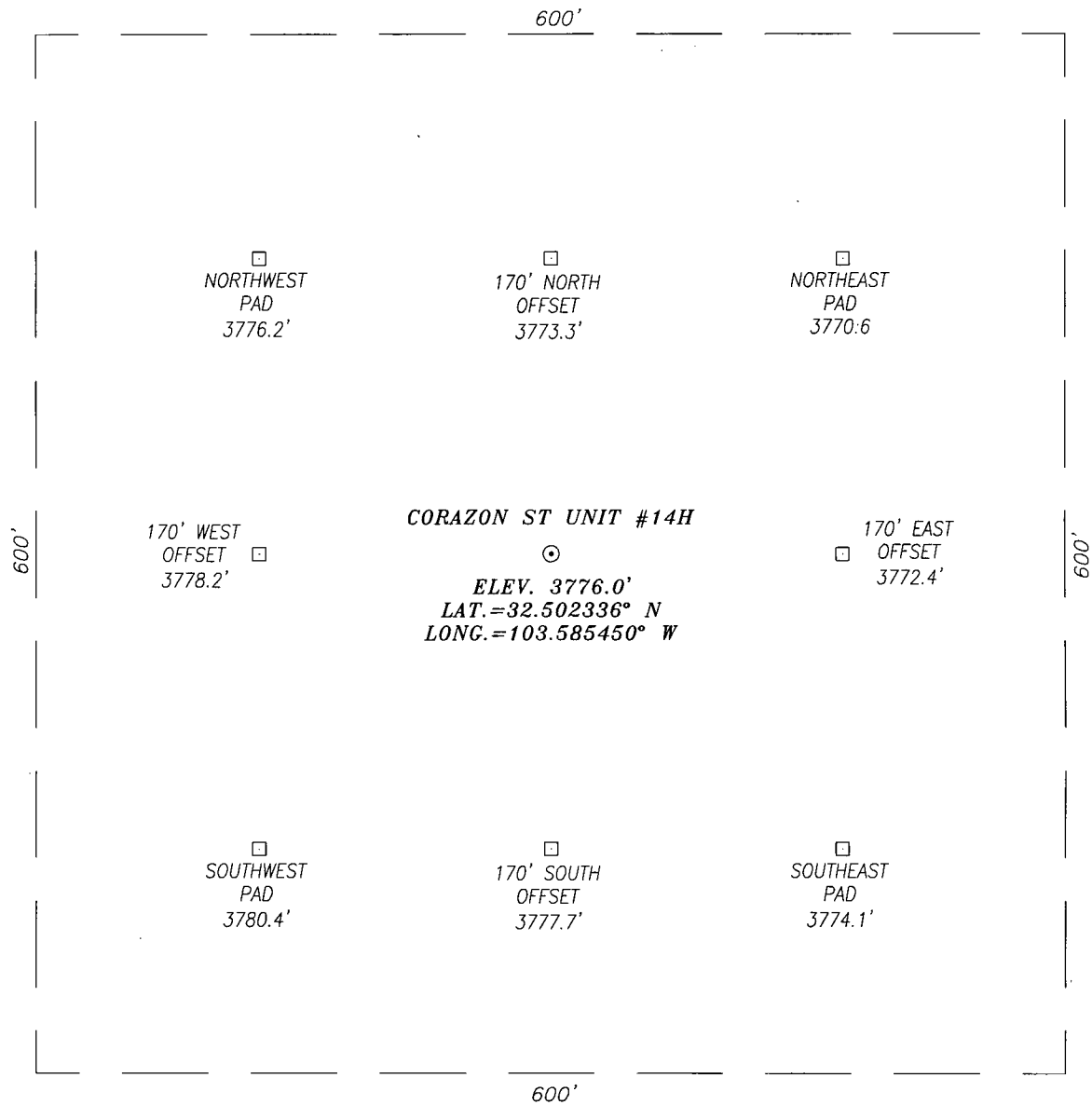
## Bottom Hole Location If Different From Surface

UL or lot No.	Section	Township	Range	Lot Idn	Feet from the	North/South line	Feet from the	East/West line	County
P	4	21-S	33-E		660	SOUTH	330	EAST	LEA
Dedicated Acres 160.0	Joint or Infill	Consolidation Code	Order No.						

NO ALLOWABLE WILL BE ASSIGNED TO THIS COMPLETION UNTIL ALL INTERESTS HAVE BEEN CONSOLIDATED  
OR A NON-STANDARD UNIT HAS BEEN APPROVED BY THE DIVISION

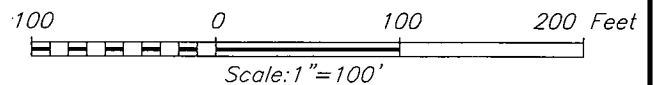
<p><u>SURFACE LOCATION</u> Y=547271.1 N X=730569.9 E LAT.=32.502336° N LONG.=103.585450° W</p> <p><u>1/16 CORNER</u> Y=547930.7' N X=730514.5' E</p> <p><u>SW CORNER</u> Y=546610.9' N X=730525.3' E</p>		<p><u>PROPOSED BOTTOM HOLE LOCATION</u> Y=547300.1 N X=735462.7 E LAT.=32.502320° N LONG.=103.569580° W</p> <p><u>1/16 CORNER</u> Y=547962.0' N X=735787.6' E</p> <p><u>SE CORNER</u> Y=546642.1' N X=735797.6' E</p>		<p><b>OPERATOR CERTIFICATION</b></p> <p>I hereby certify that the information herein is true and complete to the best of my knowledge and belief, and that this organization either owns a working interest or unleased mineral interest in the land including the proposed bottom hole location or has a right to drill this well at this location pursuant to a contract with an owner of such mineral or working interest, or to a voluntary pooling agreement or a compulsory pooling order heretofore entered by the division.</p> <p><i>Melanie J. Parker</i> 1/23/13 Signature Date Melanie J. Parker Printed Name</p>
<p>GRID AZ. - 89°39'37" HORZ. DIST. - 4892.89'</p>		<p><b>SURVEYOR CERTIFICATION</b></p> <p>I hereby certify that the well location shown on this plat was plotted from field notes of actual surveys made by me or under my supervision, and that the same is true and correct to the best of my belief.</p> <p>AUGUST 13, 2012 Date Surveyed Signature of Professional Surveyor Chad L. Hargrow NEW MEXICO 12 086 Certificate No. 17777 2012-037</p>		

SECTION 4, TOWNSHIP 21 SOUTH, RANGE 33 EAST, N.M.P.M.,  
LEA COUNTY NEW MEXICO



DIRECTIONS TO LOCATION

HEADING EAST ON HWY. 176 APPROXIMATELY 0.1 MILES PAST MILE MARKER  
9 TURN RIGHT ONTO CALICHE LEASE ROAD. ON LEASE ROAD HEAD WEST  
FOR APPROXIMATELY 0.3 MILES TO EXISTING PAD. MAKE WAY TO  
SOUTHWEST PAD CORNER AND WELL IS 1.25 MILES SOUTH.



**HARCROW SURVEYING**  
1107 WATSON, ARTESIA N.M. 88210  
PH: (575) 513-2570  
FAX: (575) 746-2808  
EST. 2007

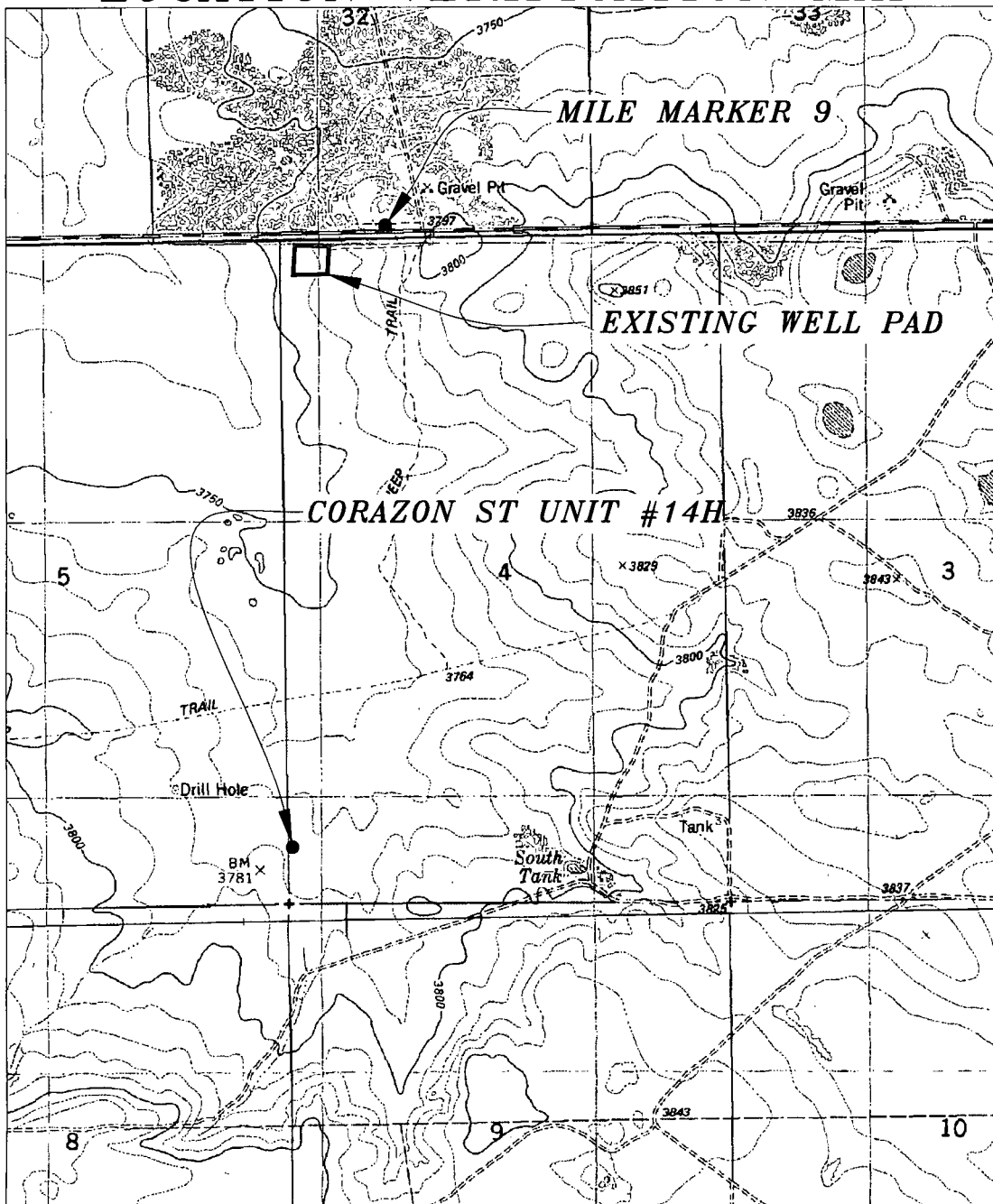


**COG OPERATING, LLC**

**CORAZON ST UNIT #14H WELL**  
LOCATED 660 FEET FROM THE SOUTH LINE  
AND 50 FEET FROM THE WEST LINE OF SECTION 4,  
TOWNSHIP 21 SOUTH, RANGE 33 EAST, N.M.P.M.,  
LEA COUNTY, NEW MEXICO

SURVEY DATE: AUGUST 07, 2012	PAGE: 1 OF 1
DRAFTING DATE: AUGUST 13, 2012	
APPROVED BY: CH	DRAWN BY: DDSI FILE: 12-080

# LOCATION VERIFICATION MAP



SCALE: 1" = 2000'

CONTOUR INTERVAL: 10'

SEC. 4 TWP. 21-S RGE. 33-E  
 SURVEY N.M.P.M.  
 COUNTY LEA STATE NEW MEXICO  
 DESCRIPTION 660' FSL & 50' FWL  
 ELEVATION 3776'  
 OPERATOR COG OPERATING, LLC  
 LEASE CORAZON ST UNIT  
 U.S.G.S. TOPOGRAPHIC MAP  
 LEA, N.M.

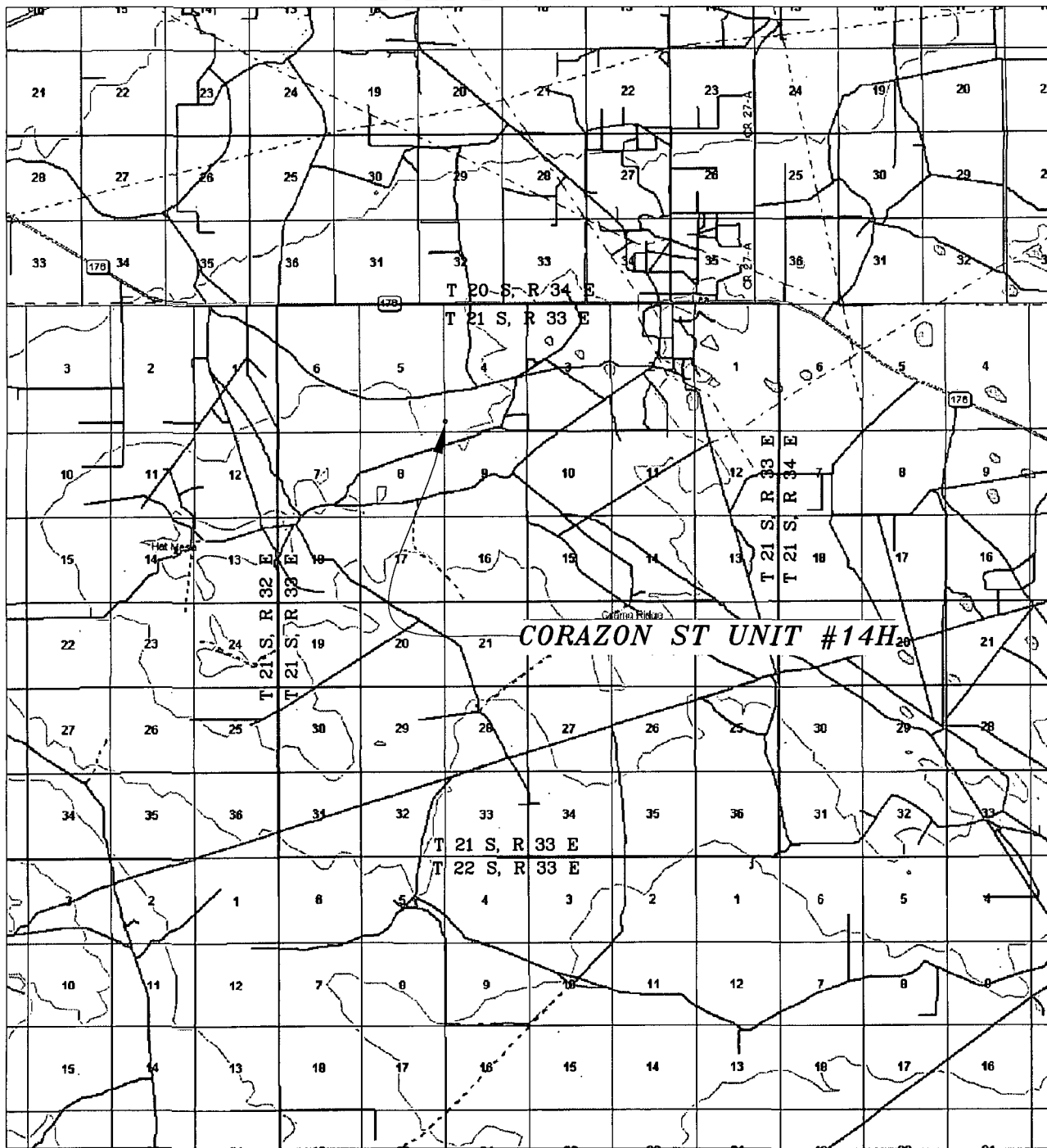
HARCROW SURVEYING  
 1107 WATSON, ARTESIA N.M. 88210  
 PH: (575) 513-2570  
 FAX: (575) 746-2808  
 EST. 2007



**COG OPERATING, LLC**

SURVEY DATE: AUGUST 07, 2012	PAGE: 1 OF 1
DRAFTING DATE: AUGUST 15, 2012	
APPROVED BY: CH	DRAWN BY: DDSI FILE: 12-080

# VICINITY MAP



SEC. 4 TWP. 21-S RGE. 33-E  
 SURVEY N.M.P.M.  
 COUNTY LEA STATE NEW MEXICO  
 DESCRIPTION 660' FSL & 50' FWL  
 ELEVATION 3776'  
 OPERATOR COG OPERATING, LLC  
 LEASE CORAZON ST UNIT

SCALE: 1" = 2 MILES

HARCROW SURVEYING  
 1107 WATSON, ARTESIA N.M. 88210  
 PH: (575) 513-2570  
 FAX: (575) 746-2808  
 EST. 2007



**COG OPERATING, LLC**

SURVEY DATE: AUGUST 07, 2012	PAGE: 1 OF 1
DRAFTING DATE: AUGUST 15, 2012	
APPROVED BY: CH	DRAWN BY: DDSI FILE: 12-080