

District I
1625 N. French Dr., Hobbs, NM 88240
Phone: (575) 393-6161 Fax: (575) 393-0720
District II
811 S. First St., Artesia, NM 88210
Phone: (575) 748-1283 Fax: (575) 748-9720
District III
1000 Rio Brazos Road, Aztec, NM 87410
Phone: (505) 334-6178 Fax: (505) 334-6170
District IV
1220 S. St. Francis Dr., Santa Fe, NM 87505
Phone: (505) 476-3460 Fax: (505) 476-3462

State of New Mexico

Form C-101
Revised November 14, 2012

Energy Minerals and Natural Resources

Oil Conservation Division

☐ AMENDED REPORT

1220 South St. Francis Dr.

Santa Fe, NM 87505

HOBBS OCD

FEB 14 2013

RECEIVED

APPLICATION FOR PERMIT TO DRILL, RE-ENTER, DEEPEN, PLUGBACK, OR ADD A ZONE

| | | |
|--|--------------------------------|-------------------------------|
| 1. Operator Name and Address CHEVRON U.S.A. INC. 15 SMITH ROAD MIDLAND, TEXAS 79705 | | 2. OGRID Number 4323 |
| | | 3. API Number 30-025-20057 |
| 4. Property Code 30886 | 5. Property Name STATE "BA" | 6. Well No. 6 |

7. Surface Location

| | | | | | | | | | |
|---------------|---------------|------------------|---------------|---------|------------------|-------------------|------------------|------------------|---------------|
| UL - Lot D | Section 36 | Township 17-S | Range 34-E | Lot Idn | Feet from 660 | N/S Line NORTH | Feet From 860 | E/W Line WEST | County LEA |
|---------------|---------------|------------------|---------------|---------|------------------|-------------------|------------------|------------------|---------------|

8. Proposed Bottom Hole Location

| | | | | | | | | | |
|----------|---------|----------|-------|---------|-----------|----------|-----------|----------|--------|
| UL - Lot | Section | Township | Range | Lot Idn | Feet from | N/S Line | Feet From | E/W Line | County |
|----------|---------|----------|-------|---------|-----------|----------|-----------|----------|--------|

9. Pool Information

| | |
|----------------------------|--------------------|
| Pool Name SWD; DEVONIAN | Pool Code 96101 |
|----------------------------|--------------------|

Additional Well Information

| | | | | |
|------------------------------|-------------------------------|--|-------------------------|--|
| 11. Work Type PB & DEEPEN | 12. Well Type SWD | 13. Cable/Rotary | 14. Lease Type STATE | 15. Ground Level Elevation 4002' GL |
| 16. Multiple | 17. Proposed Depth 13,200' | 18. Formation DEVONIAN | 19. Contractor | 20. Spud Date |
| Depth to Ground water | | Distance from nearest fresh water well | | Distance to nearest surface water |

21. Proposed Casing and Cement Program

| | | | | | | |
|------|-----------|-------------|------------------|---------------|-----------------|---------------|
| Type | Hole Size | Casing Size | Casing Weight/ft | Setting Depth | Sacks of Cement | Estimated TOC |
| | | | NO CHANGE | | | |
| | | | | | | |
| | | | | | | |

Casing/Cement Program: Additional Comments

| |
|--|
| |
|--|

22. Proposed Blowout Prevention Program

Permit Expires 2 Years From Approval
Date Unless Drilling Underway

| | | | |
|------|------------------|---------------|--------------|
| Type | Working Pressure | Test Pressure | Manufacturer |
| | | | |

SWD-1351

| | | | |
|--|--|--|--|
| 23. I hereby certify that the information given above is true and complete to the best of my knowledge and belief. I further certify that I have complied with 19.15.14.9 (A) NMAC <input checked="" type="checkbox"/> and/or 19.15.14.9 (B) NMAC <input checked="" type="checkbox"/> , if applicable. Signature: <i>Denise Pinkerton</i> Printed name: DENISE PINKERTON Title: REGULATORY SPECIALIST E-mail Address: leakejd@chevron.com Date: 02-11-2013 | | OIL CONSERVATION DIVISION Approved By: <i>[Signature]</i> Title: Petroleum Engineer Approved Date: 02/18/13 Expiration Date: 02/18/15 Conditions of Approval Attached | |
| Phone: 432-687-7375 | | | |

District I
1625 N. French Dr., Hobbs, NM 88240
Phone: (575) 393-6161 Fax: (575) 393-0720
District II
811 S. First St., Artesia, NM 88210
Phone: (575) 748-1283 Fax: (575) 848-9720
District III
1000 Rio Brazos Road, Aztec, NM 87410
Phone: (505) 334-6178 Fax: (505) 334-6170
District IV
1220 S. St. Francis Dr., Santa Fe, NM 87505
Phone: (505) 476-3460 Fax: (505) 476-3462

State of New Mexico
Energy, Minerals & Natural Resources Department
OIL CONSERVATION DIVISION
1220 South St. Francis Dr.
Santa Fe, NM 87505

Form C-102
Revised August 1, 2011
Submit one copy to appropriate
District Office

☐ AMENDED REPORT

RECEIVED
HOBBS
FEB 14 2013

WELL LOCATION AND ACREAGE DEDICATION PLAT

| | | |
|---|---|---|
| ¹ API Number 30-025-20057 | ² Pool Code 96101 | ³ Pool Name SWD; DEVONIAN |
| ⁴ Property Code 30006 | ⁵ Property Name STATE "BA" | ⁶ Well Number 6 |
| ⁷ OGRID No. 4323 | ⁸ Operator Name CHEVRON U.S.A. INC. | ⁹ Elevation 4002' |

¹⁰ Surface Location

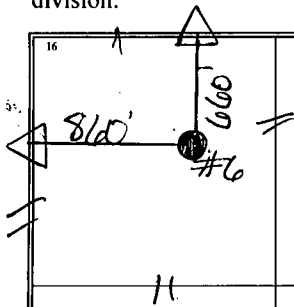
| UL or lot no. | Section | Township | Range | Lot Idn | Feet from the | North/South line | Feet from the | East/West line | County |
|---------------|---------|----------|-------|---------|---------------|------------------|---------------|----------------|--------|
| D | 36 | 17-S | 34-E | | 660 | NORTH | 860 | WEST | LEA |

¹¹ Bottom Hole Location If Different From Surface

| UL or lot no. | Section | Township | Range | Lot Idn | Feet from the | North/South line | Feet from the | East/West line | County |
|---------------|---------|----------|-------|---------|---------------|------------------|---------------|----------------|--------|
| | | | | | | | | | |

| | | | |
|-------------------------------------|-------------------------------|----------------------------------|--------------------------------------|
| ¹² Dedicated Acres 40 | ¹³ Joint or Infill | ¹⁴ Consolidation Code | ¹⁵ Order No. SWD #1351 |
|-------------------------------------|-------------------------------|----------------------------------|--------------------------------------|

No allowable will be assigned to this completion until all interests have been consolidated or a non-standard unit has been approved by the division.



¹⁷ OPERATOR CERTIFICATION

I hereby certify that the information contained herein is true and complete to the best of my knowledge and belief, and that this organization either owns a working interest or unleased mineral interest in the land including the proposed bottom hole location or has a right to drill this well at this location pursuant to a contract with an owner of such a mineral or working interest, or to a voluntary pooling agreement or a compulsory pooling order heretofore entered by the division.

Denise Pinkerton
Signature

02-11-2013
Date

DENISE PINKERTON REGULATORY SPECIALIST
Printed Name

leakejd@chevron.com
E-mail Address

¹⁸ SURVEYOR CERTIFICATION

I hereby certify that the well location shown on this plat was plotted from field notes of actual surveys made by me or under my supervision, and that the same is true and correct to the best of my belief.

Date of Survey

Signature and Seal of Professional Surveyor:

Certificate Number

STATE "BA" #6

INTENDED PROCEDURE FOR RECOMPLETION AND DEEPENING:

- 1) Pull Production Equipment.
- 2) MIRU drilling rig, pump LCM & circulate to control fluid losses
- 3) Drill out cement, CIBP & Model D packer (6 ¾" bit)
- 4) Clean out to original TD (12,109')
- 5) Drill new hole to 13,200' (6 ¾" bit)
- 6) Run GR-CNL
- 7) Set cement plug from 12,150 to 12,100'
- 8) Run 5" flush joint liner from 12,100' to surface, cement to surface
- 9) WOC, drill out cement plug @ 12,100', circulate clean to TD
- 10) Acidize with 25,000 gals 15% HCL & rock salt
- 11) Swab back load if possible, clean out salt
- 12) Run 2 7/8" IPC injection tubing, circulate packer fluid, set injection packer @ 12,050'
- 13) Chart backside for NMOCD & submit chart
- 14) Establish injection rate & pressure
- 15) Connect to SWD system

**CURRENT
WELLBORE DIAGRAM**

State BA #6

LOCATION

| | |
|------------------|----------------------|
| State | New Mexico |
| County | Lea |
| Surface Location | 660FNL 860 FWL |
| | Sec 36, R-34E, T-17S |
| | D |

CASING DETAIL

| | |
|--------------------------|---------------------------|
| Surface Csg. | |
| Size: | 13-3/8" |
| Wt.: | 44.2# & 35.6# |
| Set @: | 421' |
| Sxs cmt: | 400sx |
| TOC: | Surface |
| Hole Size: | 17-1/2" |
| Intermediate Csg. | |
| Size: | 9-5/8" |
| Wt.: | 36# & 40# J-55 |
| Set @: | 4835' |
| Sxs Cmt: | 2080sx |
| TOC: | 110' |
| Hole Size: | 12-1/4" |
| Production Csg. | |
| Size: | 7" |
| Wt.: | 23# & 26# S-95 |
| Set @: | 12109' |
| Sxs Cmt: | 850sx |
| TOC: | 1600', original TOC 5675' |
| Hole Size: | 8-3/4" |
| DV Tool | 10,614' |

WELL ID INFORMATION

| | |
|------------|----------------------------------|
| Lease Name | State BA #6 |
| Field | Vacuum Abo/ Upper Penn/ Wolfcamp |
| Reservoir | Abo, Penn, Wolfcamp |
| Ref # | FB3546 |
| API # | 30-025-20057 |

KB:

DF:

GL: 4002'

Spud Date: 5/25/1963

Compl. Date: 9/1963

Tubing Detail

7/31/2002

| # Jts. | Size | Footage |
|------------|-----------------|-----------------|
| 70 | 2-7/8" J-55 | 2184.00 |
| 250 | 2-3/8" J-55 | 7800.00 |
| 1 | 2-3/8" SN | 1.00 |
| 1 | 7" x 2-3/8" TAC | 3.00 |
| 1 | perf sub | 4.00 |
| 1 | 3-1/2" mud jt | 32.00 |
| EOT | | 10024.00 |

Rod Detail

7/31/2002

| # Rods | Size | Footage |
|----------|-----------------------|----------------|
| 1 | 1-1/3" p rod (22.00') | |
| 1 | 1-3/4" liner (16.00) | 16.00 |
| 78 | 1" D87 rods | 1950.00 |
| 113 | 7/8" D87 rods | 2825.00 |
| 203 | 3/4" D87 rods | 5075.00 |
| 4 | 1-1/2" K bars | 100.00 |
| 1 | 1" sub | 1.00 |
| 1 | 2" x 1-1/4" x 24 pump | 24.00 |
| 1 | 1" gas anchor | |
| 1 | | 9991.00 |

Original TOC 5675'

1/79- CBL 5887-4800, Perf
5624, 5625 w/2 holes, Cmt
200 sxs, TOC 1600'

Abo perfs

9070 - 9231

Wolfcamp perfs

1963: 9902 - 10016

1996: 9240-50, 9300-06, 9416-36, 86-96, 9548-56, 9620-30,

42-48, 62-86, 9748-75, 9810-22, 60-70

Upper Penn perfs

1972: 10121-34'

1996: 10320-70 (51' 102 holes, 2spf)

Devonian perfs

12036-60 squeezed 9/63 (DO to 12,050')

12036-50 perf (ac 1Mgals, 3Mgals, 7.5Mgals)

6day swab 113 bo, 117bw

Set CIBP 11,855' 1 sx cmt top

Total of 927 bbls fluid from Devonian

DV Tool 10,614'

CIBP 11,855' w/1 sx cmt.

Model D Pkr 11,906'

PBTD: 11,855'

TD: 12109'

UPDATED BY: Denise Wann

DATE: 2/9/2006

VERIFIED AS CURRENT BY: Natalie Mazanek

DATE: 7/24/2012

State BA #6 WBD-3.xls

1/29/2013

**PROPOSED
WELLBORE DIAGRAM**

State BA #6

LOCATION

| | |
|------------------|---|
| State | New Mexico |
| County | Lea |
| Surface Location | 660' FNL & 860' FWL Sec 36, R-34E, T-17S Unit Letter: D |

WELL ID INFORMATION

| | |
|------------|----------------------------------|
| Lease Name | State BA #6 |
| Field | Vacuum Abo/ Upper Penn/ Wolfcamp |
| Reservoir | Abo, Penn, Wolfcamp |
| Ref # | FB3546 |
| API # | 30-025-20057 |

CASING DETAIL

| | |
|---------------------|---------------|
| Surface Csg. | |
| Size: | 13-3/8" |
| Wt.: | 44.2# & 35.6# |
| Set @: | 421' |
| Sxs cmt: | 400sx |
| TOC: | Surface |
| Hole Size: | 17-1/2" |

Intermediate Csg.

| | |
|------------|----------------|
| Size: | 9-5/8" |
| Wt.: | 36# & 40# J-55 |
| Set @: | 4835' |
| Sxs Cmt: | 2080sx |
| TOC: | 110' |
| Hole Size: | 12-1/4" |

Production Csg.

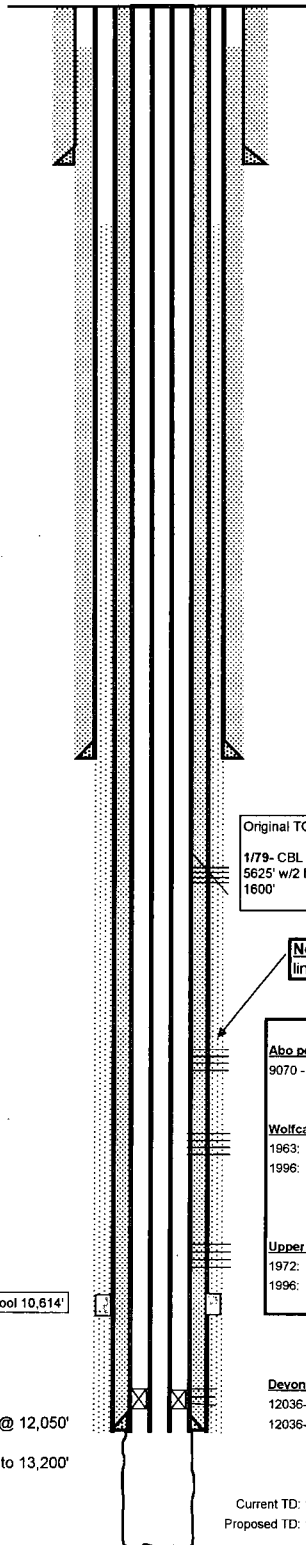
| | |
|------------|---------------------------|
| Size: | 7" |
| Wt.: | 23# & 26# S-95 |
| Set @: | 12109' |
| Sxs Cmt: | 850sx |
| TOC: | 1600', original TOC 5675' |
| Hole Size: | 8-3/4" |
| DV Tool | 10,614' |

Liner

| | |
|------------|---------|
| Size: | 5" |
| Wt.: | TBD |
| Set @: | 12109' |
| Sxs Cmt: | TBD |
| TOC: | surface |
| Hole Size: | 7" csg |

Tubing Detail

| # Jts. | Size | ## Footage |
|------------|------|------------|
| Tbg 3-1/2" | | |
| EOT | | |



KB: 4020'
DF:
GL: 4002'
Spud Date: 5/25/1963
Compl. Date: 9/1963

Original TOC 5675'

1/79 - CBL 5887-4800, Perf 5624' &
5625' w/2 holes, Cmt 200 sxs, TOC
1600'

Note: Perfs cemented behind liner;
liner will run from 12,109' to surface

Abo perfs

9070 - 9231

Wolfcamp perfs

1963: 9902 - 10016

1996: 9240-50, 9300-06, 9416-36, 86-96, 9548-56, 9620-30,
42-48, 62-86, 9748-75, 9810-22, 60-70

Upper Penn perfs

1972: 10121-34'

1996: 10320-70 (51' 102 holes, 2spf)

Devonian perfs

12036-60 squeezed 9/63 (DO to 12,050')

12036-50 perf (ac 1Mgals, 3Mgals, 7.5Mgals)

UPDATED BY: Natalie Mazanek
DATE: 7/17/2012

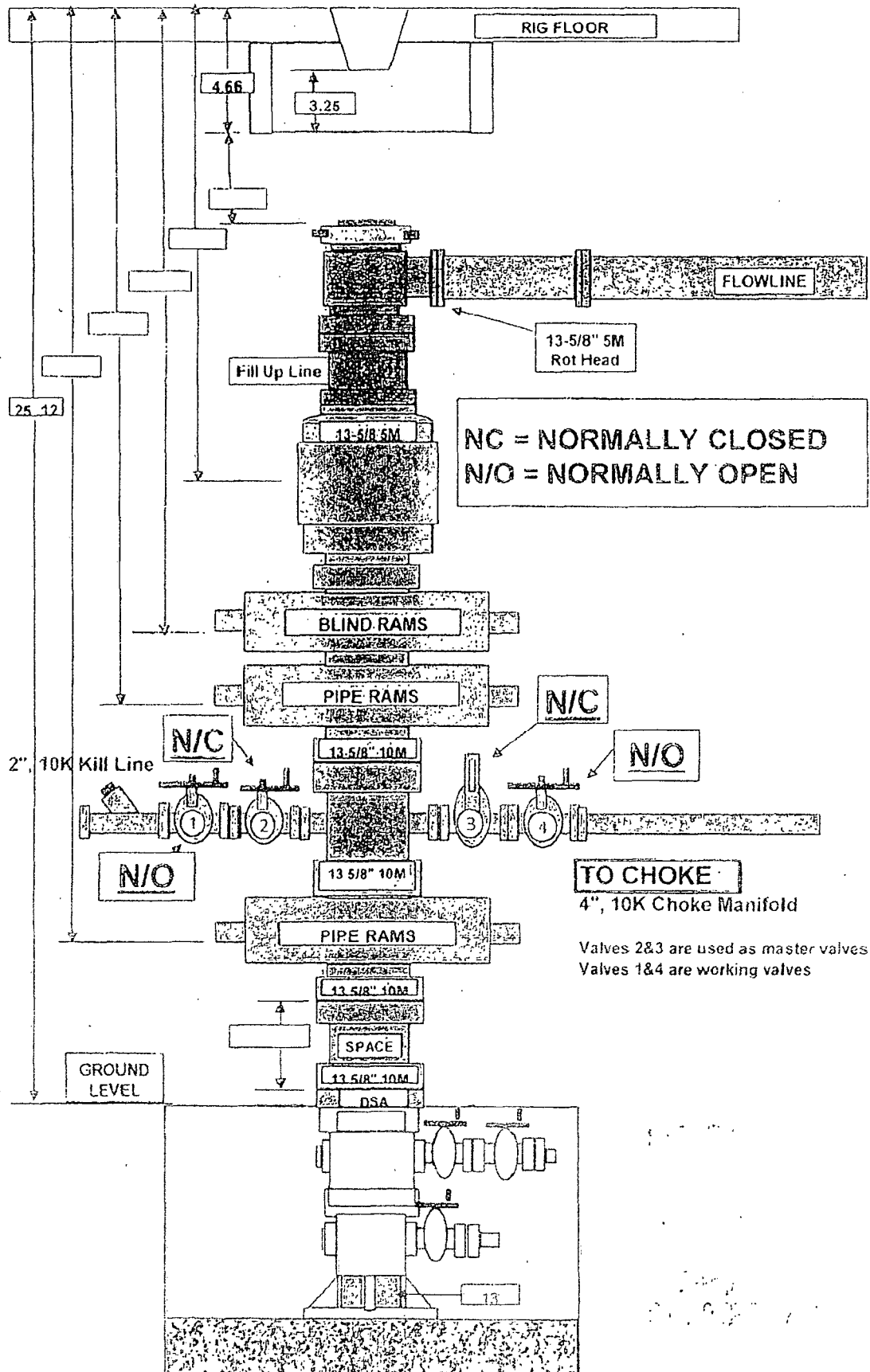
DV Tool 10,614'

10K Arrow Set 1X Pkg @ 12,050'

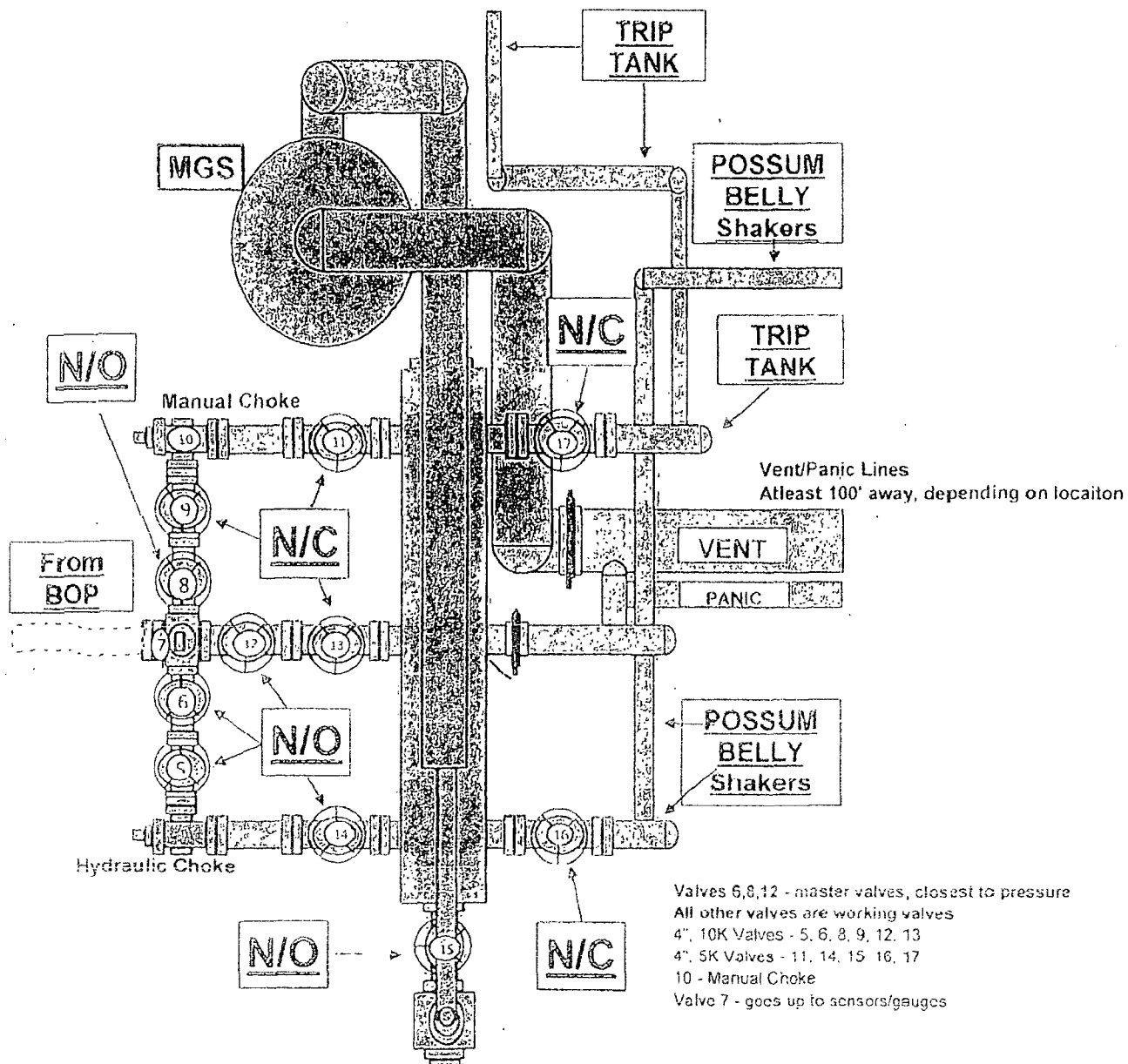
OH Devonian Perfs: 12,037' to 13,200'

Current TD: 12,110'
Proposed TD: 13,200'

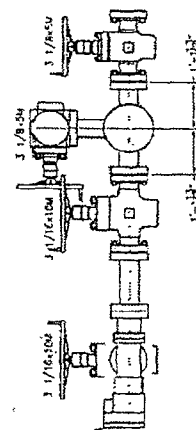
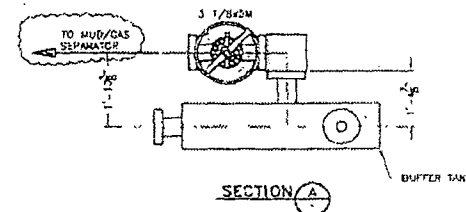
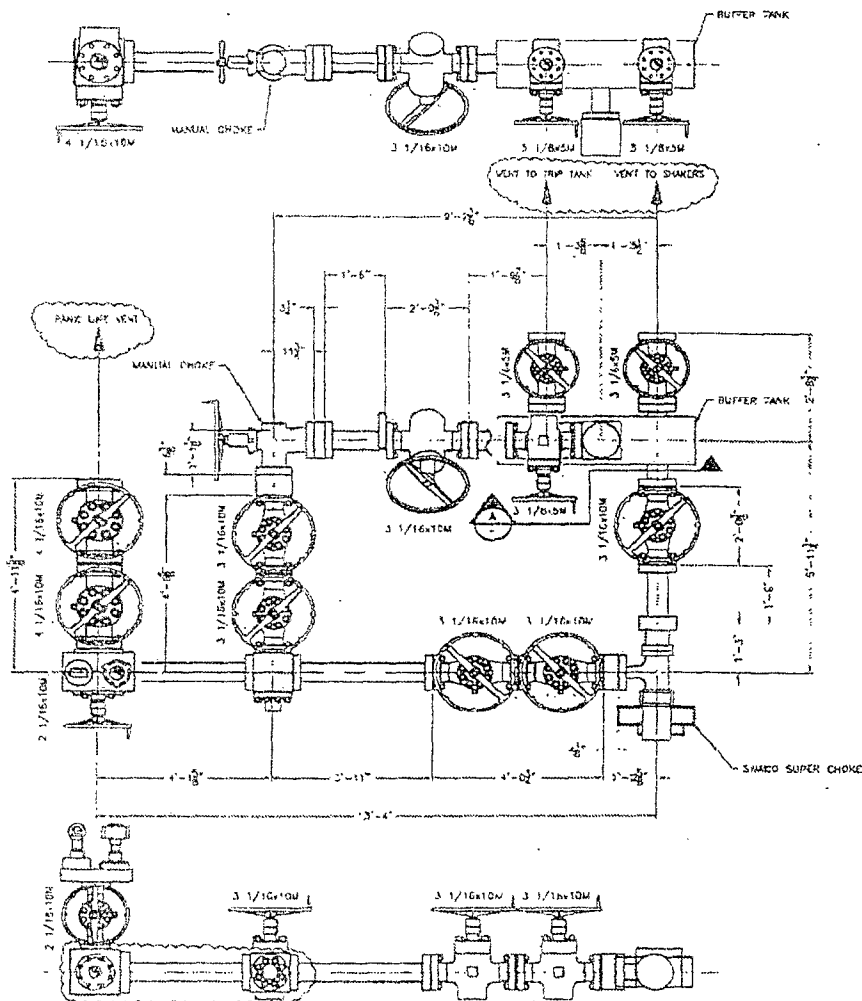
H&P 227 BOP Stack



H&P #227 CHOKE MANIFOLD



N/C = NORMALLY CLOSED
N/O = NORMALLY OPEN



ISSUED FOR FABRICATION
January-10-2011
DRAFTSMAN _____
ENGINEER _____

APPROX. WEIGHT: 25,000 LBS

HELMERICH & PAYNE
INTERNATIONAL DRILLING CO.

CHOKE MANIFOLD

| CHECKING APPROVAL | | DATE | TITLE | |
|-------------------|----------|---------------------------------|----------------|---------------|
| △ | | | CUSTOMER H&P | |
| △ | | | PROJECT FUDRCS | |
| △ | 1/10/11 | UNITS L&L EMERSON CHOK | OC | DRAWN MTS |
| △ | 10/15/07 | ADJUST DW TO FIELD CONFIRMED DW | RAY | DATE 2-28-02 |
| REV | DATE | DESCRIPTION | BY | SCALE 3/4"=1' |
| | | | | SHEET 1 OF 1 |

DWG. NO. 216-PI-05
REV. B

PROPRIETARY

THE DRAWING AND THE DATA AND INFORMATION PROVIDED IN THIS DRAWING ARE PROPRIETARY AND ARE NOT TO BE REPRODUCED, DISTRIBUTED OR RESECTED IN ANY MANNER WITHOUT THE PRIOR WRITTEN CONSENT OF A DAILY AUTHOR. HELMERICH & PAYNE INTERNATIONAL DRILLING CO.

