

HOBBS OCD

DISTRICT I

1825 N. French Dr., Hobbs, NM 88240
Phone (505) 383-8181 Fax: (505) 383-0720

DISTRICT II

511 S. First St., Artesia, NM 88201
Phone (505) 746-1883 Fax: (505) 746-0720

DISTRICT III

1000 Rio Brazos Rd., Aztec, NM 87410
Phone (505) 834-8178 Fax: (505) 834-8170

DISTRICT IV

1220 S. St. Francis Dr., Santa Fe, NM 87505
Phone (505) 476-5450 Fax: (505) 476-5452State of New Mexico
Energy, Minerals and Natural Resources Department

OIL CONSERVATION DIVISION

1220 South St. Francis Dr.
Santa Fe, New Mexico 87505

Form C-102

Revised August 1, 2011

Submit one copy to appropriate
District Office

WELL LOCATION AND ACREAGE DEDICATION PLAT

☐ AMENDED REPORT

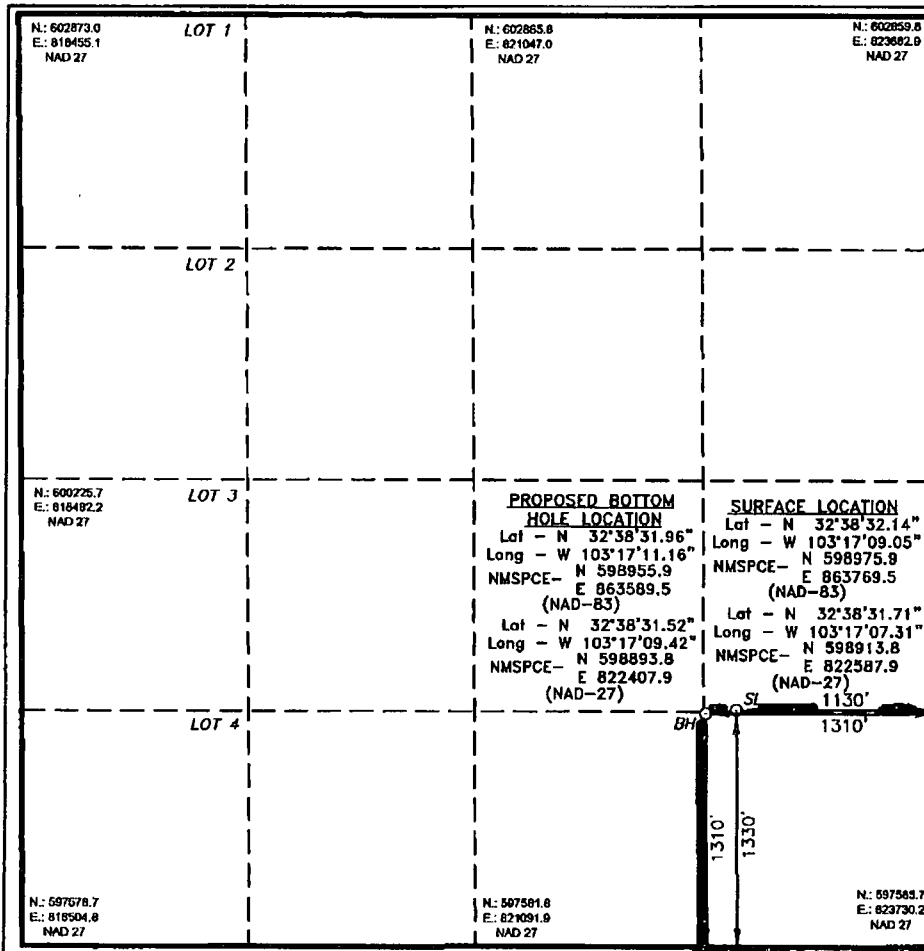
API Number 30-025-41037	Pool Code 23000	Pool Name Eunice/Monument: Grayburg San Andres
Property Code 302708	Property Name NMGSAU	Well Number 385
OGRID No. 873	Operator Name APACHE CORPORATION	Elevation 3682'

Surface Location

UL or lot No.	Section	Township	Range	Lot Idn	Feet from the	North/South line	Feet from the	East/West line	County
I	19	19 S	37 E		1330	SOUTH	1130	EAST	LEA

Bottom Hole Location If Different From Surface

UL or lot No.	Section	Township	Range	Lot Idn	Feet from the	North/South line	Feet from the	East/West line	County
P	19	19 S	37 E		1310	SOUTH	1310	EAST	LEA
Dedicated Acres 40	Joint or Infill	Consolidation Code	Order No.						

NO ALLOWABLE WILL BE ASSIGNED TO THIS COMPLETION UNTIL ALL INTERESTS HAVE BEEN CONSOLIDATED
OR A NON-STANDARD UNIT HAS BEEN APPROVED BY THE DIVISION

OPERATOR CERTIFICATION

I hereby certify that the information contained herein is true and complete to the best of my knowledge and belief, and that this organization either owns a working interest or unleased mineral interest in the land including the proposed bottom hole location or has a right to drill this well at this location pursuant to a contract with an owner of such a mineral or working interest, or to a voluntary pooling agreement or a compulsory pooling order heretofore entered by the division.

Vicki Brown 2/26/13
Signature Date

Vicki Brown
Printed Name

vicki.brown@apachecorp.com
Email Address

SURVEYOR CERTIFICATION

I hereby certify that the well location shown on this plat was plotted from field notes of actual surveys made by me or under my supervision, and that the same is true and correct to the best of my belief.

Carol L. Jones 2/26/13
Date Surveyed

Carol L. Jones
Signature of Professional Surveyor

Carol L. Jones
No. 27977

Certificate No. *Carol L. Jones* 7977

BASIN SURVEYS 27976

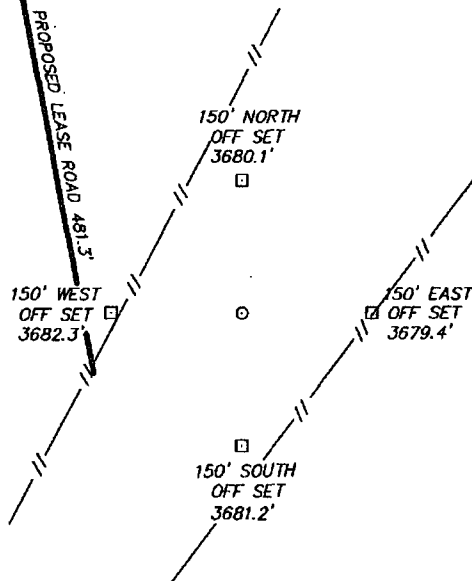
MAR 06 2013

SECTION 19, TOWNSHIP 19 SOUTH, RANGE 37 EAST, N.M.P.M.,
LEA COUNTY, NEW MEXICO.

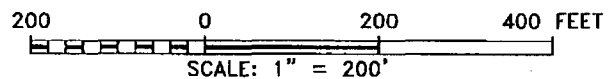
APACHE CORPORATION
NMGSAU #385
ELEV. - 3682'

Lat - N 32°38'32.14"
Long - W 103°17'09.05"
NMSPCE- N 598975.9
E 863769.5
(NAD-83)

Lat - N 32°38'31.71"
Long - W 103°17'07.31"
NMSPCE- N 598913.8
E 822587.9
(NAD-27)



WELL IS LOCATED ±10 MILES SOUTHWEST OF HOBBS, NEW MEXICO.



Directions to Location:

FROM THE JUNCTION OF HWY 62-180 AND MADDOX,
GO SOUTH 3.8 MILES TURNING EAST 0.7 MILES TO
PROPOSED LEASE ROAD.

BASIN SURVEYS P.O. BOX 1786-HOBBS, NEW MEXICO

W.O. Number: 27976 Drawn By: J. SMALL

Date: 02-11-2013 Disk: JMS 27976

APACHE CORPORATION

REF: NMGSAU #385 / WELL PAD TOPO

THE NMGSAU #385 LOCATED 1330'

FROM THE SOUTH LINE AND 1130' FROM THE EAST LINE OF
SECTION 19, TOWNSHIP 19 SOUTH, RANGE 37 EAST,

N.M.P.M., LEA COUNTY, NEW MEXICO.

Survey Date: 01-31-2013 Sheet 1 of 1 Sheets

MAR 06 2013