

DISTRICT I
1625 N. French Dr., Hobbs, NM 88240
Phone (575) 393-6161 Fax: (575) 393-0720

DISTRICT II
811 S. First St., Artesia, NM 88210
Phone (575) 746-1883 Fax: (575) 746-0720

DISTRICT III
1000 Rio Brazos Rd., Aztec, NM 87410
Phone (505) 834-8178 Fax: (505) 834-8170

DISTRICT IV
1220 S. St. Francis Dr., Santa Fe, NM 87505
Phone (505) 476-8480 Fax: (505) 476-3462

HOBBS OCD

State of New Mexico
Energy, Minerals and Natural Resources Department

Form C-102
Revised August 1, 2011

Submit one copy to appropriate
District Office

MAR 05 2012

CONSERVATION DIVISION

1220 South St. Francis Dr.
Santa Fe, New Mexico 87505

RECEIVED

WELL LOCATION AND ACREAGE DEDICATION PLAT

☐ AMENDED REPORT

API Number 30-025-41039	Pool Code 23000	Pool Name <i>Eunice Monument; Grayburg San Andres</i>
Property Code 302708	Property Name NMGSAU	Well Number 387
OGRID No. 873	Operator Name APACHE CORPORATION	Elevation 3644'

Surface Location

UL or lot No.	Section	Township	Range	Lot Idn	Feet from the	North/South line	Feet from the	East/West line	County
0	19	19 S	37 E		10	SOUTH	1330	EAST	LEA

Bottom Hole Location If Different From Surface

UL or lot No.	Section	Township	Range	Lot Idn	Feet from the	North/South line	Feet from the	East/West line	County

Dedicated Acres	Joint or Infill	Consolidation Code	Order No.
40			

NO ALLOWABLE WILL BE ASSIGNED TO THIS COMPLETION UNTIL ALL INTERESTS HAVE BEEN CONSOLIDATED
OR A NON-STANDARD UNIT HAS BEEN APPROVED BY THE DIVISION

N: 602873.0 E: 818455.1 NAD 27	LOT 1	N: 602865.8 E: 821047.0 NAD 27	N: 602859.8 E: 823882.9 NAD 27
	LOT 2		
N: 600225.7 E: 818482.2 NAD 27	LOT 3		
	LOT 4		
N: 597581.7 E: 818504.9 NAD 27	SURFACE LOCATION Lat - N 32°38'19.10" Long - W 103°17'11.40" NMSPC - N 597655.9 E 863581.4 (NAD-83) Lat - N 32°38'18.67" Long - W 103°17'09.66" NMSPC - N 597593.8 E 822399.8 (NAD-27)		N: 597581.8 E: 821051.9 NAD 27

OPERATOR CERTIFICATION

I hereby certify that the information contained herein is true and complete to the best of my knowledge and belief, and that this organization either owns a working interest or unleased mineral interest in the land including the proposed bottom hole location or has a right to drill this well at this location pursuant to a contract with an owner of such a mineral or working interest, or to a voluntary pooling agreement or a compulsory pooling order heretofore entered by the division.

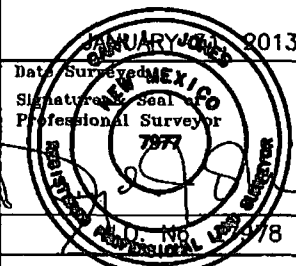
Vicki Brown 2/27/13
Signature Date

Vicki Brown
Printed Name

vicki.brown@apachecorp.com
Email Address

SURVEYOR CERTIFICATION

I hereby certify that the well location shown on this plat was plotted from field notes of actual surveys made by me or under my supervision and that the same is true and correct to the best of my belief.

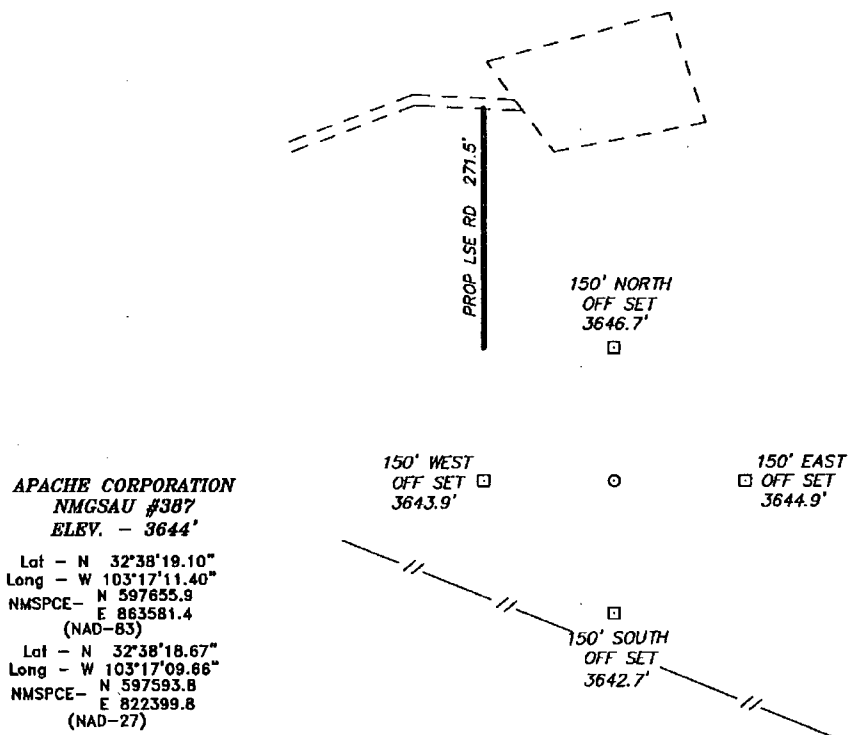


Certificate No. Gary L. Jones 7977

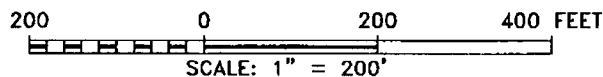
BASIN SURVEYS 27978

MAR 06 2013

SECTION 19, TOWNSHIP 19 SOUTH, RANGE 37 EAST, N.M.P.M.,
LEA COUNTY, NEW MEXICO.



WELL IS LOCATED ±10 MILES SOUTHWEST OF HOBBS, NEW MEXICO.



Directions to Location:

FROM THE JUNCTION OF HWY 62-180 AND MADDÖX,
GO SOUTH 3.8 MILES TURNING EAST 0.5 MILES
TURNING SOUTH AGAIN 0.3 MILES AND EAST 0.1
MILES TO PROPOSED LEASE ROAD.

BASIN SURVEYS P.O. BOX 1786 -HOBBS, NEW MEXICO

W.O. Number: 27978

Drawn By: J. SMALL

Date: 02-11-2013 Disk: JMS 27978

APACHE CORPORATION

REF: NMGSAU #387 / WELL PAD TOPO

THE NMGSAU #387 LOCATED 10'
FROM THE SOUTH LINE AND 1330' FROM THE EAST LINE OF
SECTION 19, TOWNSHIP 19 SOUTH, RANGE 37 EAST,
N.M.P.M., LEA COUNTY, NEW MEXICO.

Survey Date: 01-31-2013 Sheet 1 of 1 Sheets