

DISTRICT I
1625 N. French Dr., Hobbs, NM 88240
Phone (575) 393-6161 Fax: (575) 393-0720

DISTRICT II
811 S. First St., Artesia, NM 88210
Phone (505) 748-1283 Fax: (505) 748-9720

DISTRICT III
1000 Rio Brazos Rd., Aztec, NM 87410
Phone (505) 334-5179 Fax: (505) 334-5170

DISTRICT IV
1220 S. St. Francis Dr., Santa Fe, NM 87505
Phone (505) 476-3450 Fax: (505) 476-3452

State of New Mexico
Energy, Minerals and Natural Resources Department

Form C-102
Revised August 1, 2011

Submit one copy to appropriate
District Office

OIL CONSERVATION DIVISION

1220 South St. Francis Dr.
Santa Fe, New Mexico 87505

RECEIVED
MAR 05 2013

☐ AMENDED REPORT

WELL LOCATION AND ACREAGE DEDICATION PLAT

API Number 30-025-41042	Pool Code 23000	Pool Name Eunice Monument - Grayburg Sandstone
Property Code 302708	Property Name NMGSAU	Well Number 389
OGRID No. 873	Operator Name APACHE CORPORATION	Elevation 3647

Surface Location

UL or lot No.	Section	Township	Range	Lot Idn	Feet from the	North/South line	Feet from the	East/West line	County
C	30	19 S	37 E		1180	NORTH	2475	WEST	LEA

Bottom Hole Location If Different From Surface

UL or lot No.	Section	Township	Range	Lot Idn	Feet from the	North/South line	Feet from the	East/West line	County
G	30	19 S	37 E		1330	NORTH	2630	EAST	LEA

Dedicated Acres 40	Joint or Infill	Consolidation Code	Order No.
------------------------------	-----------------	--------------------	-----------

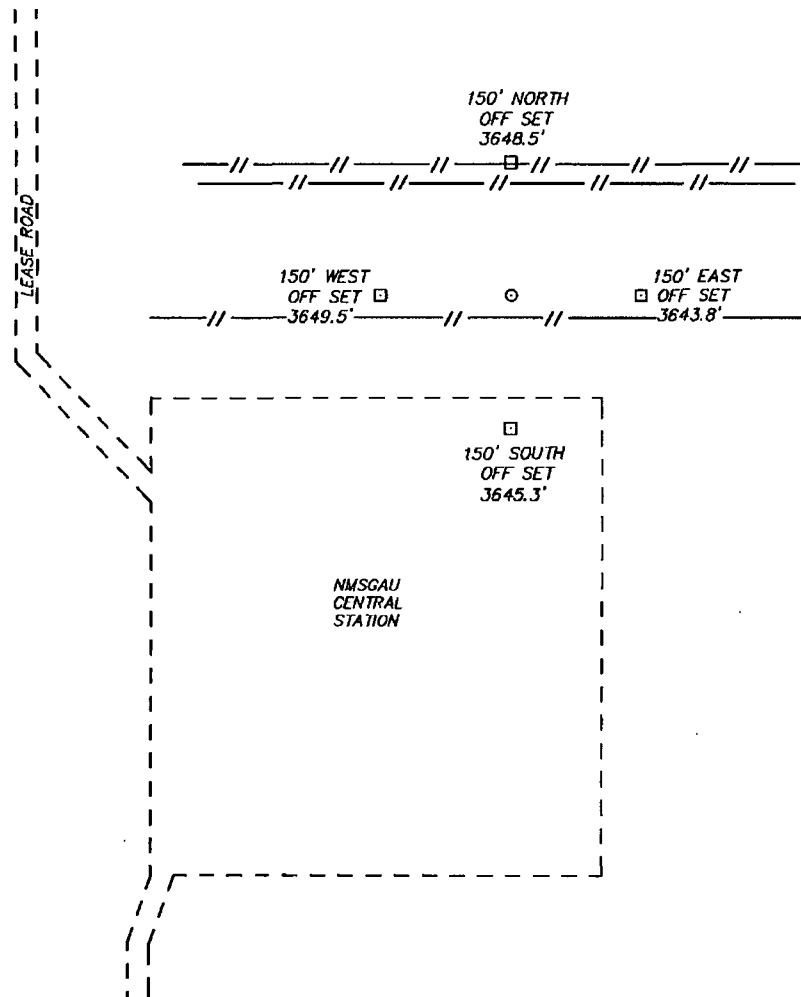
NO ALLOWABLE WILL BE ASSIGNED TO THIS COMPLETION UNTIL ALL INTERESTS HAVE BEEN CONSOLIDATED
OR A NON-STANDARD UNIT HAS BEEN APPROVED BY THE DIVISION

<p>N 597640.83 E 859685.89 (NAD-83)</p> <p>SURFACE LOCATION Lat - N 32°38'07.44" Long - W 103°17'28.02" NMSPCE- N 596463.94 E 862171.57 (NAD-83)</p>	<p>N 597643.89 E 862272.95 (NAD-83)</p> <p>N 597647.80 E 864911.30 (NAD-83)</p>	<p>OPERATOR CERTIFICATION I hereby certify that the information contained herein is true and complete to the best of my knowledge and belief, and that this organization either owns a working interest or unleased mineral interest in the land including the proposed bottom hole location or has a right to drill this well at this location pursuant to a contract with an owner of such a mineral or working interest, or to a voluntary pooling agreement or a compulsory pooling order heretofore entered by the division.</p> <p><i>Vicki Brown</i> 4/27/13 Signature Date Vicki Brown Printed Name vicki.brown@apache corp. com Email Address</p>
<p>PROPOSED BOTTOM HOLE LOCATION Lat - N 32°38'05.95" Long - W 103°17'26.59" NMSPCE- N 596314.16 E 862294.87 (NAD-83)</p>		<p>SURVEYOR CERTIFICATION I hereby certify that the well location shown on this plat was plotted from field notes of actual surveys made by me or under my supervision and that the same is true and correct to the best of my belief.</p> <p>DATE SURVEYED Signature & Seal of Professional Surveyor 7977</p> <p>Certificate No. Gary L. Jones 7977 BASIN SURVEYS 28206</p>

MAR 06 2013

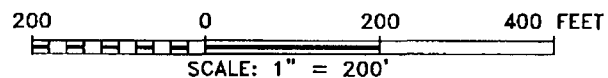
SECTION 30, TOWNSHIP 19 SOUTH, RANGE 37 EAST, N.M.P.M.,
LEA COUNTY, NEW MEXICO.

APACHE CORPORATION
NMSGASU #389
ELEV. - 3647
SURFACE LOCATION
Lat - N 32°38'07.44"
Long - W 103°17'28.02"
NMSPCE- N 596463.94
E 862171.57
(NAD-83)



DRIVING DIRECTIONS

FROM MADDOX AND PEARL VALLEY GO EAST .5 MILES TURN NORTH GO .5 MILES TO PROPOSED LOCATION.



APACHE CORPORATION

REF: NMSGASU #389 / WELL PAD TOPO

THE NMSGASU #389 LOCATED 1180'

FROM THE NORTH LINE AND 2475' FROM THE WEST LINE OF
SECTION 30, TOWNSHIP 19 SOUTH, RANGE 37 EAST,

N.M.P.M., LEA COUNTY, NEW MEXICO.

BASIN SURVEYS P.O. BOX 1786 - HOBBS, NEW MEXICO

W.O. Number: 28206 Drawn By: D. JONES

Date: 02-20-2013 Disk: DAJ 28206

Survey Date: 02-18-2013 Sheet 1 of 1 Sheets