

HOBBS OCD

## DISTRICT I

1626 N. French Dr., Hobbs, NM 88240

Phone (505) 393-8161 Fax: (505) 393-0720

## DISTRICT II

811 S. First St., Artesia, NM 88210

Phone (505) 745-1253 Fax: (505) 745-0720

## DISTRICT III

1000 Rio Brazos Rd., Aztec, NM 87410

Phone (505) 334-8175 Fax: (505) 334-8176

## DISTRICT IV

1220 S. St. Francis Dr., Santa Fe, NM 87505

Phone (505) 476-5460 Fax: (505) 476-3463

State of New Mexico  
Energy, Minerals and Natural Resources Department

Form C-102

Revised August 1, 2011

Submit one copy to appropriate  
District Office

## OIL CONSERVATION DIVISION

1220 South St. Francis Dr.  
Santa Fe, New Mexico 87505

## WELL LOCATION AND ACREAGE DEDICATION PLAT

☐ AMENDED REPORT

API Number <b>30-025-41046</b>	Pool Code <b>23000</b>	Pool Name <i>Eunice Monument: Grayburg San Andres</i>
Property Code <b>302708</b>	Property Name <b>NMGSAU</b>	Well Number <b>393</b>
OGRID No. <b>873</b>	Operator Name <b>APACHE CORPORATION</b>	Elevation <b>3611</b>

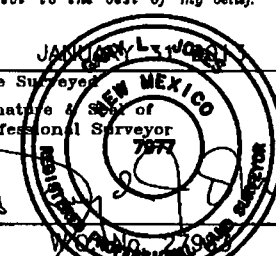
## Surface Location

UL or lot No.	Section	Township	Range	Lot Idn	Feet from the	North/South line	Feet from the	East/West line	County
<b>J</b>	<b>30</b>	<b>19 S</b>	<b>37 E</b>		<b>1330</b>	<b>SOUTH</b>	<b>1330</b>	<b>EAST</b>	<b>LEA</b>

## Bottom Hole Location If Different From Surface

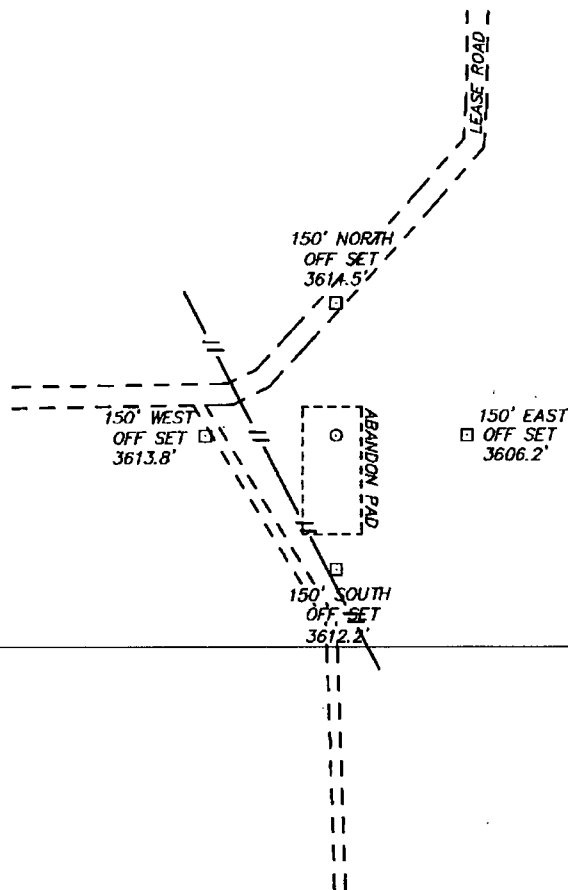
UL or lot No.	Section	Township	Range	Lot Idn	Feet from the	North/South line	Feet from the	East/West line	County
Dedicated Acres <b>40</b>		Joint or Infill		Consolidation Code		Order No.			

NO ALLOWABLE WILL BE ASSIGNED TO THIS COMPLETION UNTIL ALL INTERESTS HAVE BEEN CONSOLIDATED  
OR A NON-STANDARD UNIT HAS BEEN APPROVED BY THE DIVISION

N 597640.83 E 859685.89 (NAD-83)	N 597643.89 E 862272.95 (NAD-83)	N 597647.80 E 864911.30 (NAD-83)	<b>OPERATOR CERTIFICATION</b> I hereby certify that the information contained herein is true and complete to the best of my knowledge and belief, and that this organization either owns a working interest or unleased mineral interest in the land including the proposed bottom hole location or has a right to drill this well at this location pursuant to a contract with an owner of such a mineral or working interest, or to a voluntary pooling agreement or a compulsory pooling order heretofore entered by the division. <i>Vicki Brown</i> 2/27/13 Signature Date Printed Name <i>vicki.brown@apachecorp.com</i> Email Address
<div style="border: 2px solid black; padding: 10px; width: fit-content; margin: auto;"> <b>SURFACE LOCATION</b>            Lat - N 32°37'39.86"            Long - W 103°17'11.39"            NMSPCE - N 593691.85                      E 863620.70            (NAD-83)         </div>			
N 592354.60 E 862544.07 (NAD-83)	Lat - N 32°37'39.44" Long - W 103°17'09.66" NMSPCE - N 593629.755 E 822438.899 (NAD-27)	N 592371.15 E 864963.67 (NAD-83)	<b>SURVEYOR CERTIFICATION</b> I hereby certify that the well location shown on this plat was plotted from field notes of actual surveys made by me or under my supervision, and that the same is true and correct to the best of my belief. <div style="text-align: center;">             Date Surveyed            Signature &amp; Seal of Professional Surveyor            Certificate No. Gary L. Jones 7977            BASIN SURVEYS 27983         </div>

MAR 06 2013

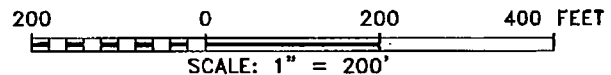
SECTION 30, TOWNSHIP 19 SOUTH, RANGE 37 EAST, N.M.P.M.,  
LEA COUNTY, NEW MEXICO.



APACHE CORPORATION  
NMGSAU #393  
ELEV. - 3611  
SURFACE LOCATION  
Lat - N 32°37'39.88"  
Long - W 103°17'11.39"  
NMSPCE- N 593691.85  
E 863620.70  
(NAD-83)  
Lat - N 32°37'39.44"  
Long - W 103°17'09.66"  
NMSPCE- N 593629.755  
E 822438.899  
(NAD-27)

DRIVING DIRECTIONS

FROM MADDOX ROAD AND PEARL VALLEY GO EAST .7 MILES TO  
PROPOSED LOCATION.



**BASIN SURVEYS** P.O. BOX 1786-HOBBS, NEW MEXICO

W.O. Number: 27983 Drawn By: D. JONES

Date: 02-05-20113 Disk: DAJ 27983

**APACHE CORPORATION**

REF: NMGSAU #393 / WELL PAD TOPO

THE NMGSAU #393 LOCATED 1330'  
FROM THE SOUTH LINE AND 1330' FROM THE EAST LINE OF  
SECTION 30, TOWNSHIP 19 SOUTH, RANGE 37 EAST,  
N.M.P.M., LEA COUNTY, NEW MEXICO.

Survey Date: 01-31-2013 Sheet 1 of 1 Sheets