

HOBBS OCD

DISTRICT I
1825 N. French Dr., Hobbs, NM 88240
Phone (575) 393-0101 Fax: (575) 393-0720

DISTRICT II
911 S. First St., Artesia, NM 88210
Phone (575) 748-1283 Fax: (575) 748-0720

DISTRICT III
1000 Rio Brazos Rd., Aztec, NM 87410
Phone (505) 334-0170 Fax: (505) 334-0170

DISTRICT IV
1220 S. St. Francis Dr., Santa Fe, NM 87505
Phone (505) 470-3460 Fax: (505) 470-3402

State of New Mexico
Energy, Minerals and Natural Resources Department

Form C-102
Revised August 1, 2011

Submit one copy to appropriate
District Office

MAR 07 2013
RECEIVED

OIL CONSERVATION DIVISION
1220 South St. Francis Dr.
Santa Fe, New Mexico 87505

WELL LOCATION AND ACREAGE DEDICATION PLAT

AMENDED REPORT

API Number 30-025-41051	Pool Code 22900	Pool Name Euniee; BL-TU²-DR - North
Property Code 22503	Property Name NORTHEAST DRINKARD UNIT	Well Number 364
OGRID No. 873	Operator Name APACHE CORPORATION	Elevation 3432'

Surface Location

UL or lot No.	Section	Township	Range	Lot Idn	Feet from the	North/South line	Feet from the	East/West line	County
0	3	21 S	37 E		215	SOUTH	1830	EAST	LEA

Bottom Hole Location If Different From Surface

UL or lot No.	Section	Township	Range	Lot Idn	Feet from the	North/South line	Feet from the	East/West line	County
0	3	21 S	37 E		30	SOUTH	1875	EAST	LEA

Dedicated Acres 40	Joint or Infill	Consolidation Code	Order No.
------------------------------	-----------------	--------------------	-----------

NO ALLOWABLE WILL BE ASSIGNED TO THIS COMPLETION UNTIL ALL INTERESTS HAVE BEEN CONSOLIDATED
OR A NON-STANDARD UNIT HAS BEEN APPROVED BY THE DIVISION

SURFACE LOCATION

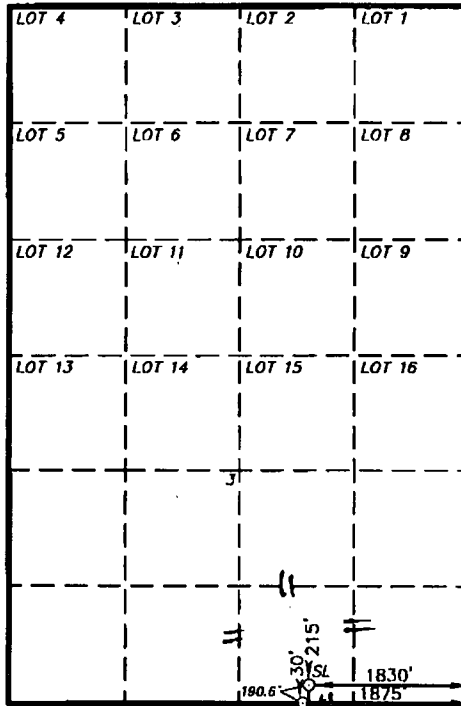
Lat - N 32°30'04.71"
Long - W 103°08'53.93"
NMSPC- N 548136.748
E 906678.088
(NAD-83)

Lat - N 32°30'04.28"
Long - W 103°08'52.23"
NMSPC- N 548076.851
E 865494.134
(NAD-27)

PROPOSED BOTTOM HOLE LOCATION

Lat - N 32°30'02.88"
Long - W 103°08'54.45"
NMSPC- N 547951.01
E 906635.16
(NAD-83)

Lat - N 32°30'02.44"
Long - W 103°08'52.76"
NMSPC- N 547891.11
E 865451.20
(NAD-27)



1" = 2000'

OPERATOR CERTIFICATION

I hereby certify that the information contained herein is true and complete to the best of my knowledge and belief, and that this organization either owns a working interest or unleased mineral interest in the land including the proposed bottom hole location or has a right to drill this well at this location pursuant to a contract with an owner of such a mineral or working interest, or to a voluntary pooling agreement or a compulsory pooling order heretofore entered by the division.

Vicki Brown 3/5/13
Signature Date

Vicki Brown
Printed Name

vicki.brown@apachecorp.com
Email Address

SURVEYOR CERTIFICATION

I hereby certify that the well location shown on this plat was plotted from field notes of actual surveys made by me or under my supervision and that the same is true and correct to the best of my belief.

SEPTEMBER 2012
Date Surveyed

Gary L. Jones
Signature Seal of Professional Surveyor

7977
Professional Surveyor

PLAT NO. 27414

Certificate No. Gary L. Jones 7977

BASIN SURVEYS 27414

MAR 13 2013

Chm