

HOBBS OCD

APR 03 2013

District I
1625 N. French Dr., Hobbs, NM 88240
District II
1301 W. Grand Avenue, Artesia, NM 88210
District III
1000 Rio Brazos Rd., Aztec, NM 87410
District IV
1220 S. St. Francis Dr., Santa Fe, NM 87505

State of New Mexico
Energy, Minerals & Natural Resources Department
OIL CONSERVATION DIVISION
1220 South St. Francis Dr.
Santa Fe, NM 87505

RECEIVED

Form C-102
Revised October 12, 2005
Submit to Appropriate District Office
State Lease- 4 Copies
Fee Lease- 3 Copies

☒ AMENDED REPORT

WELL LOCATION AND ACREAGE DEDICATION PLAT

API Number 30-025- 41088	Pool Code 40299	Pool Name LOST TANK DELAWARE
Property Code 39795	Property Name CABIN LAKE "31" FEDERAL COM	Well Number 6H
OGRID No. 16696	Operator Name OXY USA INC.	Elevation 3595.5'

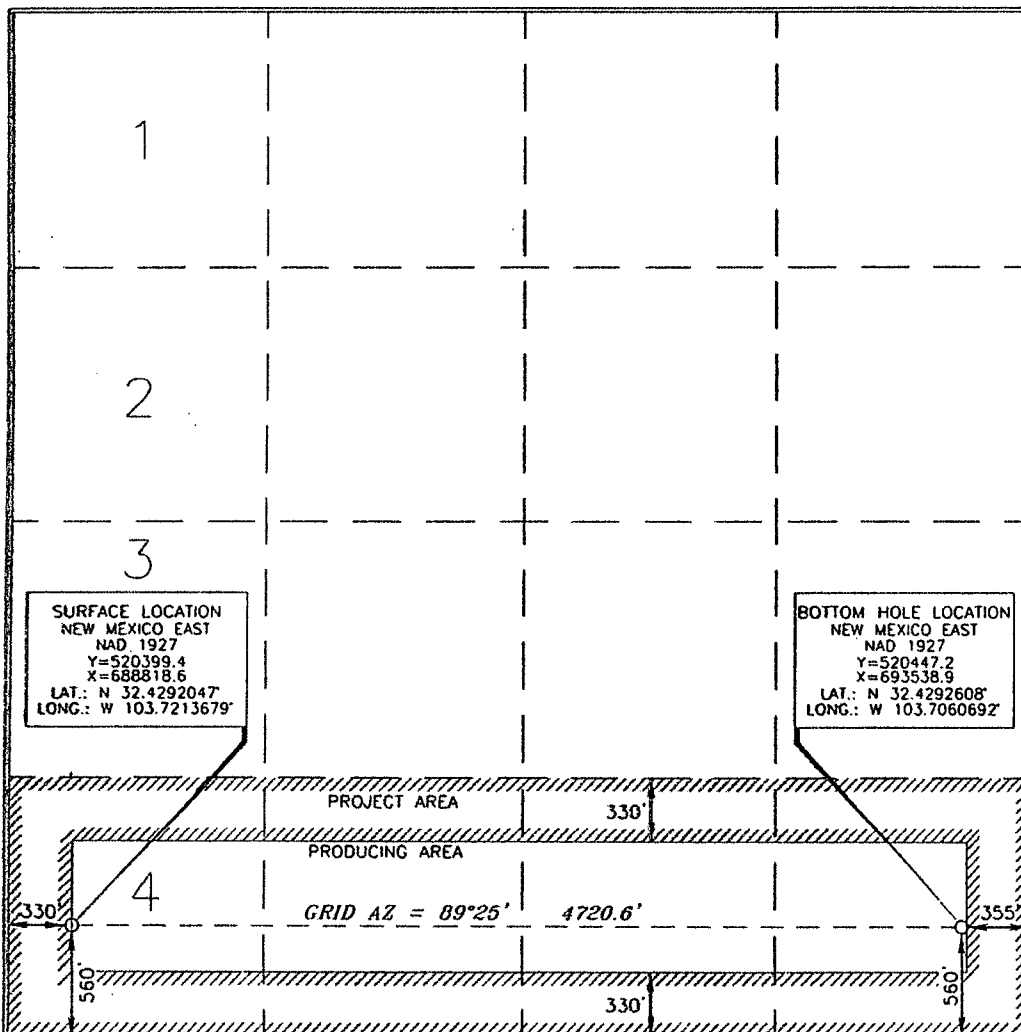
Surface Location

UL or lot no.	Section	Township	Range	Lot 14n	Feet from the	North/South line	Feet from the	East/West line	County
4	31	21 SOUTH	32 EAST, N.M.P.M.		560'	SOUTH	330'	WEST	LEA

Bottom Hole Location If Different From Surface

UL or lot no.	Section	Township	Range	Lot 14n	Feet from the	North/South line	Feet from the	East/West line	County
P	31	21 SOUTH	32 EAST, N.M.P.M.		560'	SOUTH	355'	EAST	LEA
Dedicated Acres 163.74		Joint or Infill	Consolidation Code	Order No.					

No allowable will be assigned to this completion until all interests have been consolidated or a non-standard unit has been approved by the division.



OPERATOR CERTIFICATION

I hereby certify that the information contained herein is true and complete to the best of my knowledge and belief, and that this organization either owns a working interest or unleased mineral interest in the land including the proposed bottom hole location or has a right to drill this well at this location pursuant to a contract with an owner of such a mineral or working interest, or to a voluntary pooling agreement or a compulsory pooling order heretofore entered by the division.

David Stewart 8/23/12
Signature Date
David Stewart - Reg. Adv.
Printed Name

SURVEYOR CERTIFICATION

I hereby certify that the well location shown on this plat was plotted from field notes and measurements made by me or under my supervision and that the same is true and correct to the best of my belief.

Terry A. Paul 8/23/2012
Date of Survey
Signature of Professional Surveyor
Certificate Number 15079
W01120309WL-a (Rev. C) (NA)

APR 04 2013