

Submit 1 Copy To Appropriate District Office
District I - (575) 393-6161
1625 N. French Dr., Hobbs, NM 88240
District II - (575) 748-1283
811 S. First St., Artesia, NM 88210
District III - (505) 334-6178
1000 Rio Brazos Rd., Aztec, NM 87410
District IV - (505) 476-3460
1220 S. St. Francis Dr., Santa Fe, NM 87505

State of New Mexico
Energy, Minerals and Natural Resources
OIL CONSERVATION DIVISION
1220 South St. Francis Dr.
Santa Fe, NM 87505

Form C-103
Revised August 1, 2011

RECEIVED

SUNDRY NOTICES AND REPORTS ON WELLS (DO NOT USE THIS FORM FOR PROPOSALS TO DRILL OR TO DEEPEN OR PLUG BACK TO A DIFFERENT RESERVOIR. USE "APPLICATION FOR PERMIT" (FORM C-101) FOR SUCH PROPOSALS.)		WELL API NO. 30-025-25708
1. Type of Well: Oil Well <input type="checkbox"/> Gas Well <input type="checkbox"/> Other INJECTION		5. Indicate Type of Lease STATE <input checked="" type="checkbox"/> FEE <input type="checkbox"/>
2. Name of Operator CHEVRON U.S.A. INC.		6. State Oil & Gas Lease No.
3. Address of Operator 15 SMITH ROAD, MIDLAND, TEXAS 79705		7. Lease Name or Unit Agreement Name CENTRAL VACUUM UNIT ✓
4. Well Location Unit Letter I: 1332 feet from the SOUTH line and 1310 feet from the WEST line Section 36 Township 17-S Range 34-E NMPM County LEA		8. Well Number 81 ✓
11. Elevation (Show whether DR, RKB, RT, GR, etc.)		9. OGRID Number 4323
		10. Pool name or Wildcat VACUUM GRAYBURG SAN ANDRES

12. Check Appropriate Box to Indicate Nature of Notice, Report or Other Data

NOTICE OF INTENTION TO:

PERFORM REMEDIAL WORK ☐ PLUG AND ABANDON ☐
TEMPORARILY ABANDON ☐ CHANGE PLANS ☐
PULL OR ALTER CASING ☐ MULTIPLE COMPL ☐
DOWNHOLE COMMINGLE ☐

SUBSEQUENT REPORT OF:

REMEDIAL WORK ☐ ALTERING CASING ☐
COMMENCE DRILLING OPNS. ☐ P AND A ☐
CASING/CEMENT JOB ☐

OTHER:

OTHER REPAIR MIT & RTI

13. Describe proposed or completed operations. (Clearly state all pertinent details, and give pertinent dates, including estimated date of starting any proposed work). SEE RULE 19.15.7.14 NMAC. For Multiple Completions: Attach wellbore diagram of proposed completion or recompletion.

PLEASE FIND ATTACHED, REPORTS FOR WORK DONE FROM 03/25/2013 THROUGH 04/29/2013, TO RETURN THIS WELL TO INJECTION.

04/29/2013: RAN CHART. (ORIGINAL CHART & COPY OF CHART ATTACHED).

WELL IS RETURNED TO INJECTION.

Spud Date:

Rig Release Date:

I hereby certify that the information above is true and complete to the best of my knowledge and belief.

SIGNATURE

Denise Pinkerton

TITLE: REGULATORY SPECIALIST

DATE: 05-16-2013

Type or print name: DENISE PINKERTON

E-mail address: leakejd@chevron.com

PHONE: 432-687-7375

APPROVED BY:

[Signature]

TITLE:

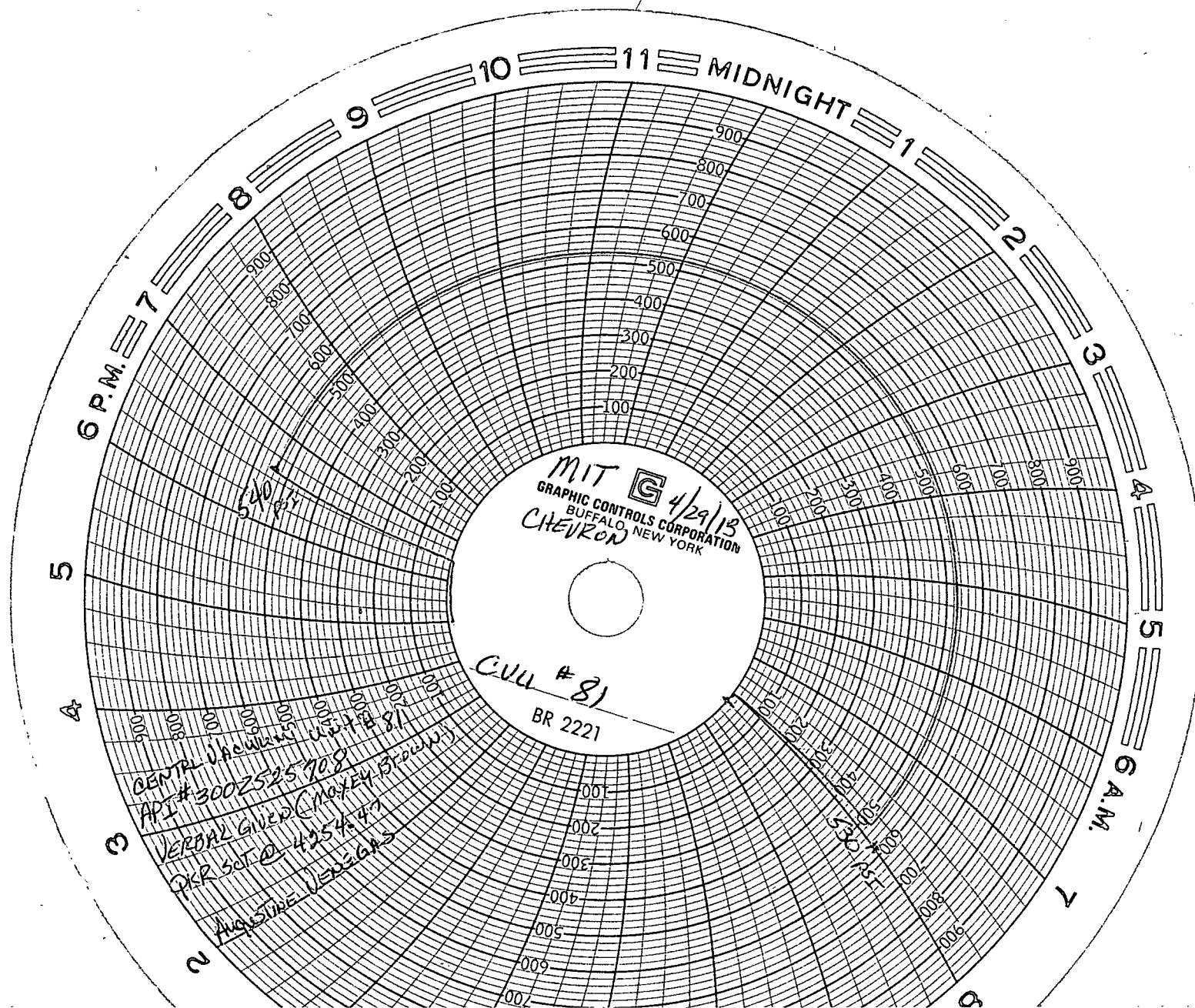
Dist MGR

DATE:

6-3-2013

Conditions of Approval (if any):

JUN 04 2013



**CURRENT
WELLBORE DIAGRAM**

Created: 6/23/2005 By: GAA
 Updated: 9/8/2008 By: Ncayce
 Updated: 5/6/2009 By: PTB
 Updated: 8/26/2009 By: Ncayce
 Lease: Central Vacuum Unit
 Surface Location: 1332 FSL & 1310 FWL
 Bottomhole Location: Same
 County: Lea St: NM
 Current Status: Active Injector
 Directions to Wellsite: Buckeye, New Mexico

Well No.: 81 Field: Vacuum
 Unit Ltr: L Sec: 36 TSHP/Range: 17S-34E
 Unit Ltr: Unit Ltr: Sec: TSHP/Range:
 St Lease: B-2146 API: 30-025-25708 Cost Center: BCT494500
 Elevation: 3998' GL CHVNO: EP8748

Surface Csg.

Size: 13 3/8"
 Wt.: 48#, H-40
 Set @: 355'
 Sxs cmt: 400
 Circ: Yes
 TOC: Surface
 Hole Size: 17 1/2"

Intermediate Csg. #1

Size: 9 5/8"
 Wt.: 32#, K-55
 Set @: 1500'
 Sxs cmt: 800
 Circ: Yes
 TOC: Surface
 Hole Size: 12 1/4"

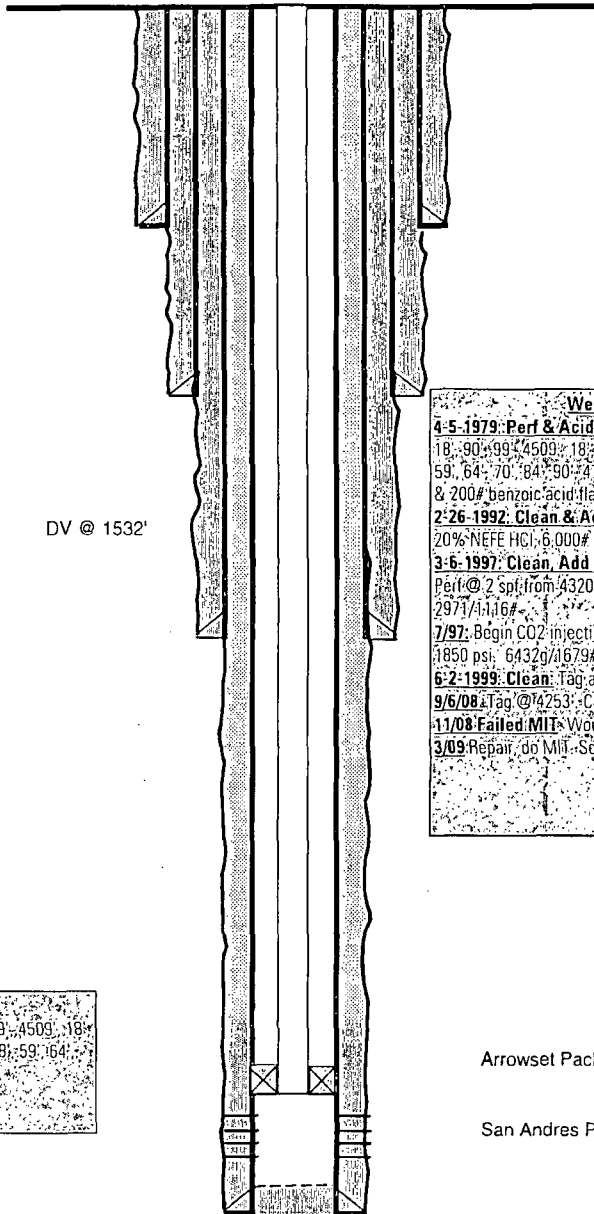
Intermediate Csg. #2

Size: 7"
 Wt.: 23#, K-55
 Set @: 2763 ft DV @ 1532'
 Sxs cmt: 650
 Circ: Yes
 TOC: Surface
 Hole Size: 8 3/4"

Production Csg.

Size: 4 1/2"
 Wt.: 10.5#, K-55
 Set @: 4800'
 Sxs cmt: 800
 Circ: Yes
 TOC: Surface
 Hole Size: 6 1/8"

KB: 4010
 DF: 4009
 GL: 3998
 Original Spud Date: 3/3/1979
 Original Compl. Date: 4/5/1979



Well & Failure History

4-5-1979: Perf & Acid: Add perfs @ 2 spf @ 4322', 30', 44', 51', 60', 4416', 18', 90', 99', 4509', 18', 25', 74', 79', 91', 97', 4604', 10', 18', 24', 34', 42', 48', 59', 64', 70', 84', 90', 4700', 05' Acid with 7500 gls 15% NEA & 400# rock salt & 200# benzoic acid flakes.
 2-26-1992: Clean & Acid: Cleaned with bailer to 4750'. Acid with 10,000 gls 20% NEFF HCl, 6,000# Rock salt & 238 ball sealers. 2001/840#
 3-6-1997: Clean, Add perfs & Acid: Tag to 4333' and clean with bit to 4723'. Perf @ 2 spf from 4320'-4335'. Acid new perfs with 6,000 gls 15% NEFF HCl. 2971/4116#
 7/97: Begin CO2 injection @ est. rate of 3610 mcf/d. Max allowed pressure is 1850 psi. 6432g/1679#
 6-2-1999: Clean: Tag at 4352'. Clean 3 7/8" bit to 4741'. 1018/1700#
 9/6/08: Tag @ 4253'. Couldn't get thru pkr. Pkr @ 4265'.
 11/08: Failed MII: Would not hold pressure during test. Repair due 2/16/09.
 3/09: Repair, do MII. Set pkr @ 4264'.

Perforation detail:

4/5/1979: 4322', 30', 44', 51', 60', 4416', 18', 90', 99', 4509', 18', 25', 74', 79', 91', 97', 4604', 10', 18', 24', 34', 42', 48', 59', 64', 70', 84', 90', 4700', 05' (2 SPF)
 3-6-1997: 4320'-4335'

Arrowset Packer @ 4254

San Andres Perfs: 4320' - 4705'

PBTD: 4741' ft
 TD: 4800' ft



Summary Report

Major Rig Work Over (MRWO)

Stimulation

Job Start Date: 3/25/2013

Job End Date: 4/29/2013

Well Name CENTRAL VACUUM UNIT 081		Lease Central Vacuum Unit	Field Name Vacuum	Business Unit Mid-Continent/Alaska	
Ground Elevation (ft) 3,998.00	Original RKB (ft) 4,010.00	Current RKB Elevation 4,010.00, <elvdttmstart>		Mud Line Elevation (ft)	Water Depth (ft)

Report Start Date: 3/25/2013

Com

Travel Time for Rig Crew

JSA Safety Meeting. Discussed Tenet #5, hazard ID wheel #5, E Colors #5, Reviewed Rig Move Safety procedures, discussed the route for moving Pulling Unit & all required equipment. Discussed the hazards of rigging upon Pulling Unit, Electrical hazard. Discussed Idling Policy on location. Discussed what to be aware of when rigging up & use communication during all operations for R?U.

Move rig to new location

Rig Up Pulling Unit

BD Annulus.

Pressure up to 900 psi on Wellhead & open up to Tbg. Pump 17 bbls of 10# Brine Water down 2 3/8" PD Tbg & went on slight vacuum.

Load Annulus & pressure test to 450 psi. Pressure increased to 490 psi in 5 min. Bleed back down to 450 psi & hold for 30 min. & kept building pressure.

JSA Safety Meeting w/ Diamond D Slickline, discussed the RU & RD of Slickline Equipment, hazards running Slickline Plug & pressure to set plug in profile.

RU Diamond D Slickline. Tbg Pressure is equalizing w/ Annulus indicating there may be a Tbg leak.

TIH w/ Gage Ring run to verify Tbg ID. Pump 17 bbls of 10# Brine Water to flush Tbg clean. TIH w/ 1.43 F Slickline Plug & set & pressure up to 1000 psi & seated ok. TOH w/ Setting Tool

ND Injection Tree

Nipple Up BOP stack/ Hydril on top.

Debrief Meeting discussed the days job activities & what went well & what went wrong

Travel Time for Rig Crew

Report Start Date: 3/26/2013

Com

Travel Time for Rig Crew

JSA Safety Meeting. Discussed Tenet #6, hazard ID #6, E Colors # t. Discussed the days operations, TOH w/ Tbg, Circulating Pressures, rotating equipment, suspended loads, Electrical hazards, Idling Vehicle Policy. Crush Points, Review Tubscope JSA & RU & RD of equipment, lifting equipment to floor & communications w/ all personell on location during scanning operations.

Move in a rig up Tubscope equipment

Attempt to release from Packer & unable to get free. Continued working & still unable to get free. 200 psi on Tbg & had slight bleed off there was 0 psi on casing. SD due to Fiber Lined Tubing & breaking lining inside Tubing. Notified Larry Birklebach & advised to TOH w/ Profile Plug & Perforate Tubing & circ wellbore & release Pkr.

Wait on Slickline Retrieving equipment & W/L Perforating equipment. Pressured up on casing & test to 400 psi while waiting.

JSA Safety Meeting w/ Diamond D Slickline & discussed the Slicline operations R/U of equipment, the hazards involved in lifting lubricator & equipment & connect to Tubing. Discussed he hazards of Slickline TIH & TOH, Pressure on Tbg to equalize, Crush Points & suspended loads.

R/U Diamond D Slickline & TIH & equalize Profile Plug & TIH & Fish Slickline Plug. RD equipment.

JSA Safety Meeting w/ Rotary Wireline discussed hazards in wireline, suspended loads, cell phones off, secure work area while going in hole & TOH w/ Wireline, crush points making up Lubricator & possible pressure from formation. Will be perforating Tubing above Packer @ 4264 ft.

R/U Rotary Wireline Perforating Gun & TIH to 4225 ft & attempt to perforate Gun did not hoot Perfs. TOH.

TIH w/ 2nd Run Perforating Gun w/ 6 Shots & Perforate @ 4225 ft

Released AS-1X Packer & had free travel up & down hole. Close BOP& lock pipe rams. Shut TIW Valve & install night cap

Debrief Meeting discussed the days operations & what went wrong & what went right. Discussed some issues of more than one operation going on around the rig ie: backing in lay down machine, slickline trucks, W/L trucks.

Travel Time for Rig Crew

Report Start Date: 3/27/2013

Com

Travel Time for Rig Crew

JSA Safety Meeting. Discussed tenet # 7, hazard ID #7, E Colors #7. Discussed the days operations, JSA w/ Tubscope covering R/U of Scanning equipment, suspended loads lifting equipment, TOH w/ Tbg, pressure, rotating equipment, standing Tbg back. Covered the Electrical Hazards on location & Vehicle Idling Policy.

700 psi on Tbg & 600 psi w/ CO2 Gas. Bled gas off & pumped 120bbls 10# Brine Water. Did not get full circulation back

RU Tubscope Scanning Equipment.

TOH w/ 2 3/8" Fiber Lined PD Tbg scanning out of hole w/ AS-1X Pkr standing back Tbg. 3 Bad Jt of Tbg

Move in 2 3/8" W S Tbg & Tally

PU 6 - 3 1/16" Drill Collars w/ 3 7/8" MT Bit & TIH

TIH w/ 2 3/8" W S Tbg to 4348 ft & tagged up.

RU & load hole w/ Fresh Water, 10# Brine goes on screaming vacuum. Unable to get circulation w/ fresh water.

TOH to 4228 ft Install TIW Valve w/ Night Cap, Close BOP Pipe Rams& lock.

Debrief Meeting discussed the days job procedure & events effecting the work cycle.

Travel Time for Rig Crew

Report Start Date: 3/28/2013



Summary Report

Major Rig Work Over (MRWO)

Stimulation

Job Start Date: 3/25/2013

Job End Date: 4/29/2013

Well Name	Lease	Field Name	Business Unit
CENTRAL VACUUM UNIT 081	Central Vacuum Unit	Vacuum	Mid-Continent/Alaska
Ground Elevation (ft)	Original RKB (ft)	Current RKB Elevation	Mud Line Elevation (ft)
3,998.00	4,010.00	4,010.00, <elvdttmstart>	Water Depth (ft)

Com

Travel Time for Rig Crew

JSA Safety Meeting. Discussed Tenet #8, Hazard ID #8, E Colors # 8. Discussed the hazards of the day including Suspended loads, rotating equipment, slip trip & fall hazards, TIH & TOH w/ Tbg, using the lay down machine, communicate w/ all operators of equipment, Review Well Foam equipment. JSA & RU procedures & hazards involved including pressure, loud noise, lifting hoses & stripping rubber. Reviewed Idling Policy & Electrical hazards on location.

MIRU Well Foam Unit & Stripping Rubber & blowback lines.

Circulate well w/ Foam Air @75% Quality Foam @ 3/4 bpm w/1200 psi on Tbg & 400 psi on annulus. return line

RU Schlumberger Power Swivel Equipment to 2 3/8" W S Tbg.

Started drilling @ 4348 ft & circulated bottoms up w/ 75 to 80% Quality Foam @ 3/4BPM @ 1200 psi w/ 400 psi. Cleaned out about 15 ft.

TIH w/ 3 7/8" Bit & drill collars & slide down hole until tagging up on fill. @ 4580 ft Start drilling @ 50 RPM w/ 2K WOB, 3/4 BPM down 2 3/8" Tbg @ 1200 psi w/ 400 psi on Annulus.

Tagged up @ 4741 ft & start drilling on Frac balls in hole & drill thru Float Collar @ 1200 psi w/ 80% Quality Foam, 400 psi on Annulus Returns w/ 50 RPM, 2K WOB. Fell thru @ 4743 ft & slid to 4771 ft.

Continue drilling out Cement from 4771 ft to 4798 f w/ 80% Quality Foam @ 3/4 BPM w/ 1200 psi on Tbg & 400 psi on Casing flowing back o tank.t

Circulate wellbore w/ 80% Quality Foam @ 3/4 BPM @ 1200 psi Tbg Pressure & 400 psi Annulus Pressure & clean up wellbore. Pump 18 bbls Fresh Water Tbg Cap & well Killed RD Power Swivel.

TOH w/ Bit & Tbg to 4228 ft SIFN. Close BOP & lock Pipe rams. TIW valve installed w/ Night Cap. Well SI

Debrief Meeting, discussed the days drilling process & pressure issues & talked about the use of Ear Plugs by all personell during Foam Operations.

Travel Time for Rig Crew.

Report Start Date: 3/29/2013

Com

Travel Time for Rig Crew

JSA Safety Meeting. Discussed Tenet #9, Hazard ID # 9, E Colors #9. Discussed the days job procedure, Pressure to kill well, TIH w/ Tbg & Spot Acid, TOH w/ Tbg, rotating equipment, suspended loads, slip trip & fall hazards, crush points.. Discussed Vehicle Idling Policy & Electrical Hazards on location & discussed the use of a ground guide when moving forward around all stationary equipment or well heads.

MIRU Petro Plex Acid equipment.

JSA Safety Meeting w/ Petro Plex discussed lifting equipment to floor, crush points, making up pump lines, pressure, watch hammer swings & communications w/ all personell on location. Discussed the use of 10% Acetic Acid & the hazards of contact w/ body. Discussed the operation of the Safety Shower Trailer.

Start 200 gal Acetic Acid spot. Pumped 1.9 bbls & tbg plugged & pressure increased to 5000psi before being able to shut down pump. RU & surged pressure from Tubing w/o success. Bled pressure from 2 3/8" WS Tubing.

Attempted to pull up hole & had drag going up & unable to go back down. Worked pipe w/o success. Notified Larry Birklebach & discussed options. Will use Mud Bucket to get Acetic Acid out of 1st Jt of Tbg & then go in & shoot holes in Tbg to displace acid.

Annulus pressure started building up to 300 psi, flowed back for about 30 min & started to pump down Annulus w/ 10# Brine to kill well.

RD Petro Plex equipment

SD while waiting for Mud Bucket to break out tubing w/ Acetic Acid. Held JSA Safety Meeting w/ Rotary W/L & discussed the hazards in suspended loads, Wireline movement, cell phones off, slip trip & fall hazards. crush points stressed communication w/ all personell. Reviewed Vehicle Idling Policy.

Checked Tubing for fluid & found that fluid level had dropped below our next connection. Pulled up & broke out 2 3/8" W S Tubing jt

RU Rotary Wireline equipment. TIH w/ Perforating gun & shoot 4 holes @ 4557 ft. Pump 10# Brine Water down Tubing to flush Acetic Acid from Wireline & Tools. RD Rotary Wireline Equipment.

TOH w/ 2 3/8" W S Tubing. While TOH Tubing was dragging from 4798 ft to 4548 ft. & freed up. Bit was not plugged indicating that Annulus had packed @ TD.

R/U Baker Wireline Lubricator, Junk Basket, Sinker Bars & CCL RD Baker had wrong Gage Ring for Junk Basket. RD Baker Wireline Lubricator equipment.

TIH w/ Peak 4 1/2" 32-A Pkr & 40 jts Kill String EOT @ 1240 ft

Debrief Meeting discussed the days events, plugged Tubing, dragging POOH & wrong equipment from Baker Atlas Wireline equipment

Travel Time for Rig Crew

Report Start Date: 4/2/2013

Com

CREW TRAVEL FROM YARD TO LOCATION

MAKE OUT AND DISCUSS JSA (TENET # 2 OPERATE IN A SAFE AND CONTROLLED CONDITION-----E-COLORS AND HAZARD WHEEL), KILL WELL, TOOH WITH KILL STRING, TIH WITH BAILER, CLEAN OUT, TOOH

TUBING 680 PSI, PUMP 90 BBLs OF 10 # BRINE WATER TO KILL WELL

TOOH WITH KILL STRING AND PACKER

TIH WITH BULLDOG BAILER, WORK STRING WITH A 2 3/8" NOTCHED COLLAR AND TAG TIGHT SPOT AT 4350', WORKED THRU, CONTINUE IN HOLE AND TAG AT 4660'

CLEAN OUT FILL TO 4663' AND QUIT MAKING ANY FOOTAGE

TOOH, HAD 150' OF FILL (FORMATION, FRAC SAND AND SMALL CASING PIECES) IN CHAMBER

CREW SHUT DOWN AND EAT LUNCH



Summary Report

Major Rig Work Over (MRWO)

Stimulation

Job Start Date: 3/25/2013

Job End Date: 4/29/2013

Well Name CENTRAL VACUUM UNIT 081		Lease Central Vacuum Unit	Field Name Vacuum	Business Unit Mid-Continent/Alaska	
Ground Elevation (ft) 3,998.00	Original RKB (ft) 4,010.00	Current RKB Elevation 4,010.00, <elvdttmstart>		Mud Line Elevation (ft)	Water Depth (ft)

Com

CLEAN FILL OUT OF TUBING CHAMBER

TIH AND TAG FILL AT 4663'

CLEAN OUT TO 4670'

PULL UP HOLE AND LEAVE 25 STANDS IN HOLE, SECURE LOCATION, SHUT DOWN OVERNIGHT

CREW TRAVEL FROM LOCATION TO YARD

Report Start Date: 4/3/2013

Com

CREW TRAVEL FROM YARD TO LOCATION

MAKE OUT AND DISCUSS JSA (TENET # 3---ENSURE SAFETY DEVICES ARE IN PLACE AND FUNCTIONING---E-COLORS, AND HAZARD WHEEL) TOOH, TIH AND CLEAN OUT FILL, TOOH, TIH WITH DRILL COLORS, RIG UP AIR UNIT, CLEAN OUT FILL

TUBING 0 PSI, CASING 100 PSI, OPEN WELL TO FLOW BACK TANK, TOOH WITH TUBING AND BAILER

CLEAN OUT BAILER CHAMBER

TIH WITH BAILER AND TAG FILL

CLEAN OUT FILL

CREW SHUT DOWN AND EAT LUNCH

TOOH WITH TUBING BAILER AND CLEAN OUT CHAMBER (FORMATION, CASING PIECES, AND FRAC SAND), SPOT IN AND RIG UP WELL FOAM AIR UNIT

TIH WITH 3-7/8" CONCAVE MILL, 3-7/8" STRING MILL, 6 - 3-1/8" DRILL COLLARS, AND 2-3/8" WORK STRING TO TOP OF PERFS

BREAK CIRCULATION WITH AIR MIST, CIRCULATE HOLE CLEAN, SHUT DOWN AIR UNIT, SECURE LOCATION, SHUT DOWN OVERNIGHT

CREW TRAVEL FROM LOCATION TO YARD

Report Start Date: 4/4/2013

Com

CREW TRAVEL FROM YARD TO LOCATION

MAKE OUT AND DISCUSS JHA (TENET # 4---FOLLOW SAFE WORK PRACTICES AND PROCEDURES

TUBING 0 PSI, CASING 0 PSI, OPEN WELL TO FLOW BACK TANK, BREAK CIRCULATION WITH AIR MIST

TIH AND TAG FILL AT 4640', CLEAN OUT TO 4745' (PBTD)

CIRCULATE TO CLEAN UP, 1350 PSI ON THE TUBING AND 450 PSI ON CASING RETURN LINE, RAN 2 -3 BBL SWEEPS, SHUT DOWN AIR, PUMP 5 BBLs OF WATER DOWN TUBING

RIG DOWN POWER SWIVEL

STARTED TO PULL TUBING AND IT WOULD NOT GO UP, DOWN ROTATE, WORK TUBING UP TO 35,000 # OVERWIEGHT, TUBING WOULD NOT MOVE

PUMP DOWN TUBING WITH 10 # BRINE WATER AND THE TUBING WOULD PRESSURE UP TO 1000 PSI, PRESSURE WOULD SLOWLY BLEED OFF, PUMPED 100 BBLs DOWN CASING AND IT WAS ON A VACUUM, PRESSURE UP ON TUBING AND WORK TUBING UP AND DOWN, MADE NO PROGRESS, CALLED LARY BIRKELBACH AND VISITED ABOUT DOING A MANUAL BACK OFF TO SEE IF WE CAN GET THE FLOATS OUT OF THE TUBING AND THEN BACK OFF AND RUN FISHING TOOLS, SECURE LOCATION, SHUT DOWN OVERNIGHT

CREW TRAVEL FROM LOCATION TO YARD

Report Start Date: 4/5/2013

Com

CREW TRAVEL FROM YARD TO LOCATION

MAKE OUT AND DISCUSS JSA (TENET # 5---MEET OR EXCEED CUSTOMERS REQUIRMENTS) E-COLORS AND HAZARD WHEEL, BACKING OFF TUBING, TOOH, TIH WITH FISHING TOOLS, JARING ON FISH

TUBING 0 PSI, CASING 900 PSI, OPEN WELL TO FLOW BACK TANK, PUMPED 50 BBLs 10 # BRINE DOWN CASING AND LEFT THE PUMP RUNNING AT AN IDLE, TIGHTENED TUBING AND THEN BACKED TUBING OFF, TUBING WEIGHTING 23,000

TOOH WITH 144 JOINTS OF TUBING, LEFT 7 JOINTS OF TUBING (COLLAR LOOKING UP) AND 6 DRILL COLLARS IN THE HOLE, TOP OF FISH AT 4350'

TALLY AND CALIPER FISHING TOOLS AND COLLARS, PICKUP AND MAKE UP---3 7/8" OVERSHOT WITH COLLAR GRAPPLE, BUMPER SUB, JARS, 6 - 3-1/8" DRILL COLLARS AND ACCELERATOR

CREW SHUT DOWN AND EAT LUNCH

TIH WITH 2-3/8" WORKSTRING CHECKING EACH COLLAR FOR TIGHT GOING IN THE HOLE

TAGGED FISH AT 4350', ATTEMPTED TO LATCH ONTO FISH BUT COULD NOT GET IT TO CATCH, POSSIBLY HITTING BAD CASING

TOOH WITH TUBING AND COLLARS, THERE WERE CHUNKS OF CASING STUCK IN THE GRAPPLE, SECURE LOCATION, SHUT DOWN OVERNIGHT

CREW TRAVEL FROM YARD TO LOCATION

Report Start Date: 4/6/2013

Com

CREW TRAVEL FROM YARD TO LOCATION

MAKE OUT AND DISCUSS JSA--(TENET # 6---MAINTAIN INTEGRITY OF DEDICATED SYSTEMS---E-COLORS AND HAZARD WHEEL) TIH WITH FISHING TOOLS, LATCHING ONTO FISH AND JARRING, TOOH

PICK UP FISHING BHA AND TIH, TAG AT 4352'



Summary Report

Major Rig Work Over (MRWO)

Stimulation

Job Start Date: 3/25/2013

Job End Date: 4/29/2013

Well Name CENTRAL VACUUM UNIT 081		Lease Central Vacuum Unit	Field Name Vacuum	Business Unit Mid-Continent/Alaska	
Ground Elevation (ft) 3,998.00	Original RKB (ft) 4,010.00	Current RKB Elevation 4,010.00, <elvdttmstart>		Mud Line Elevation (ft)	Water Depth (ft)

Com

ATTEMPT TO LATCH ONTO FISH WITH NO SUCCESS

TOOH, PULLED 15 STANDS AND TUBING STARTED PULLING WET, GRAPPLE WAS PLUGGED WITH FORMATION, CALLED LARRY BIRKELBACH AND VISITED ABOUT HAVING A 3"-3-7/8" SHOE MADE THAT WILL SCREW ONTO THE OVERSHOT TO SEE IF WE CAN WASH SOME FORMATION AWAY FROM THE TOP OF THE COLLAR, EXTENSION WILL BE READY AM MONDAY 4/8/2013

CREW SHUT DOWN AND EAT LUNCH

CLEAN FORMATION OUT OF GRAPPLE AND BUMPER SUB

TIH WITH 20 STANDS OF TUBING FOR KILL STRING,

CREW TRAVEL FROM LOCATION TO YARD

Report Start Date: 4/8/2013

Com

CREW TRAVEL FROM YARD TO LOCATION

MAKE OUT AND DISCUSS JSA (TENET # 8---ADDRESS ABNORMAL CONDITIONS---E-COLORS AND HAZARD WHEEL, TOOH, TIH WITH FISHING TOOLS, CIRCULATING WITH AIR, LATCHING ONTO FISH AND JARRING, TOOH

TUBING 000 PSI, CASING 000 PSI, OPEN WELL TO FLOW BACK TANK

TOOH WITH TUBING

MAKE UP A 4' EXTENSION ON GRAPPLE, PICK UP FISHING BHA, TIH WITH TUBING TO 4350'

RIG UP POWER SWIVEL

BREAK CIRCULATION WITH AIR MIST

MILLED ON SOMETHING AT 4350' JUST FEATHERING IT, WENT ROUGHLY 4" AND THEN WORKED TUBING DOWN TO 4358' AND LATCHED ONTO FISH

SHUT DOWN AIR, BLOW TUBING BACK TO FLOW BACK TANK

RIG DOWN POWER SWIVEL

JARRED ON FISH, SECURE LOCATION, SHUT DOWN OVERNIGHT

CREW TRAVEL FROM LOCATION TO YARD

Report Start Date: 4/9/2013

Com

CREW TRAVEL FROM YARD TO LOCATION

MAKE OUT AND DISCUSS JSA---(TENET # 9---FOLLOW WRITTEN PROCEDURE FOR HIGH RISK OR UNUSUAL SITUATIONS), BLOWING WELL DOWN, JARRING ON FISH, RELEASING OVERSHOT, TOOH

TUBING 100 PSI, CASING 800 PSI, OPEN WELL TO FLOW BACK TANK AND BLOW WELL DOWN

CONTINUE JARRING UP AND DOWN ON FISH

SHUT DOWN AND EAT LUNCH

CONTINUE JARRING ON FISH, CALLED LARRY BIRKELBACH AND VISITED ABOUT GETTING OFF OF THE FISH, TOOH, TIH WITH FULL OPENING OVERSHOT AND RUN BACKOFF TOOLS

RELEASE OVERSHOT

LAY DOWN WITH 4 JOINTS OF TUBING, SECURE LOCATION, SHUT DOWN OVERNIGHT

CREW TRAVEL FROM LOCATION

Report Start Date: 4/10/2013

Com

CREW TRAVEL FROM YARD TO LOCATION

MAKE OUT AND DISCUSS JSA (TENET # 10---INVOLVE THE RIGHT PEOPLE IN DECISIONS THAT AFFECT PROCEDURES AND EQUIPMENT--- BLOWING WELL DOWN, PUMPING KILL FLUID, TOOH, TIH WITH OVERSHOT, LATCH ONTO FISH, RUN FREE POINT, BACK OFF

TUBING 500 PSI, CASING 400 PSI, OPEN WELL TO FLOW BACK TANK

PUMP 10 # BRINE WATER DOWN CASING AND TUBING TO KILL WELL

TOOH WITH TUBING AND FISHING BHA

TIH WITH FULL OPEN OVERSHOT AND TUBING, TAG FISH AT 4358' AND LATCH ON

HOLD TAILGATE SAFETY MEETING WITH GRAY WIRELINE CREW, SPOT IN WIRELINE TRUCK

RIG UP WIRELINE UNIT

TIH WITH FREE POINT TOOL AND TAGGED SOMETHING ON TOP OF TUBING COLLAR AT THE OVERSHOT, (SUSPECT A PIECE OF CASING) WORKED FREE POINT TOOL AND PUSHED DEBRIS DOWN TO TOP OF DRILL COLLARS, COULD NOT GET INTO COLLARS, TUBING WAS FREE 1 JOINT ABOVE DRILL COLLARS, POOH

RIH WITH BACK OFF CHARGE AND BACK OFF TUBING AT 4559' (WL), LEFT 1 JOINT OF TUBING ABOVE COLLARS, POOH

RIG DOWN GRAY WIRELINE TRUCK, TALKED WITH LARRY BIRKELBACH AND HE HAD TALKED TO SMITH ABOUT BEST JARRING RESULTS, SMITH SUGGESTED RUNNING 8 DRILL COLLARS, WE WILL GET 2 MORE IN THE AM

TOOH AND LAYDOWN 6 JOINT OF 2 3/8" WORK STRING, SECURE LOCATION, SHUT DOWN OVERNIGHT

CREW TRAVEL FROM LOCATION TO YARD

Report Start Date: 4/11/2013



Summary Report

Major Rig Work Over (MRWO)

Stimulation

Job Start Date: 3/25/2013

Job End Date: 4/29/2013

Well Name CENTRAL VACUUM UNIT 081		Lease Central Vacuum Unit	Field Name Vacuum	Business Unit Mid-Continent/Alaska	
Ground Elevation (ft) 3,998.00	Original RKB (ft) 4,010.00	Current RKB Elevation 4,010.00, <elvdttmstart>		Mud Line Elevation (ft)	Water Depth (ft)

Com

CREW TRAVEL FROM YARD TO LOCATION

MAKE OUT AND DISCUSS JSA (TENET # 1---OPERATE WITHING DESIGN & ENVIROMENTAL LIMITS---E-COLORS AND HAZARD WHEEL), BLOWING WELL DOWN, PUMPING KILL FLUID, JARRING ON FISH, RELEASING OVERSHOT, TOO H AND LAYDOWN TUBING

TUBING 100 PSI, CASING 300 PSI, OPEN WELL TO FLOW BACK TANK

CHECK JARS TO SEE IF THEY WOULD WORK, WOULD NOT WORK, WORK TUBING AND FINALLY STARTED FELLING BUMPER SUB WORK, JARS STARTED WORKING

CONTINUE JARRING ON FISH

RIG UP POWER SWIVEL

RELEASE OVERSHOT FROM FISH

TOOH AND LAYDOWN 2-3/8"---4.7 #---L-80---8rd TUBING, LEAVE 30 JOINTS IN FOR KILL STRING, SECURE LOCATION, SHUT DOWN OVERNIGHT

CREW TRAVEL FROM LOCATION TO YARD

Report Start Date: 4/12/2013

Com

CREW TRAVEL FROM YARD TO LOCATION

MAKE OUT AND DISCUSS JSA (TENENT # 2----OPERATE IN A SAFE AND CONTROLLED CONDITION----E-COLORS AND HAZARD WHEEL), RELEASE OVERSHOT FROM FISH, TOO H AND LAY DOWN TUBING, CHANGE OUT TUBING, TIH WITH P-110 WORK STRING, DO RIG INSPECTION, FIRE DRILL, EVACUATION DRILL, SPILL DRILL, HIGH ANGLE RESCUE DRILL AND BOP DRILL

TUBING 0 PSI, CASING 500 PSI, OPEN WELL TO FLOW BACK TANK, WORK TUBING AND COULD FELL BUMPER SUB WORKING,PULL UP AND SEE IF JARS WOULD GO OFF, WOULD NOT WORK, WORK TUBING TO RELEASE OVERSHOT FROM FISH, JARS STARTED WORKING

JAR ON FISH

RELEASE OVERSHOT FROM FISH

TOOH AND LAYDOWN 2-3/8" L-80 WORKSTRING, LEFT 18 STANDS AND COLLARS IN HOLE FOR KILL STRING, SECURE LOCATION, SHUT DOWN FOR WEEKEND

TRAVEL FROM LOCATION TO YARD

Report Start Date: 4/15/2013

Com

CREW TRAVEL FROM YARD TO LOCATION

MAKE OUT AND DISCUSS JSA (TENET # 5---ENSURE SAFETY DEVICES ARE IN PLACE AND FUNCTIONING---E-COLORS AND HAZARD WHEEL), BLOWING WELL DOWN, KILLING WELL, TOO H WITH TUBING AND BHA, CHANGING OUT TUBING, TIH WITH P-110 TUBING

TUBING 500 PSI, CASING 900 PSI, OPEN WELL TO FLOW BACK TANK, PUMP 40 BBLS 10 # BRINE TO KILL WELL

TOOH AND LAYDOWN TUBING, STAND DRILL COLLARS BACK

MOVE 2-3/8"--L-80--4.7 #---EUE 8 rd TUBING OFF OF PIPE RACKS, PUT 2-3/8"--P-110---5.95 #---PA-6---TUBING ON THE PIPERACKS, PREP AND TALLY TUBING

MAKE UP FISHING BHA---OVERSHOT WITH 3-1/16" GRAPPLE, BUMPER SUB, JARS, 8 - 3-1/8" DRILL COLLARS AND ACCELARATOR

PICK UP AND TIH WITH 2-3/8"--PA-6---5.95 #---P-110 TUBING

CREW SHUT DOWN FOR LUNCH

FINISH PICKING UP TUBING OFF OF PIPE RACKS, LATCH ONTO FISH

JAR ON FISH, PULLING 60,000 # OVER (TUBING WEIGHT 33,000 #), LIMITING FACTOR IS JARS, RATED AT 65,000 # PULL, SECURE LOCATION, SHUT DOWN OVERNIGHT

CREW TRAVEL FROM LOCATION TO YARD

Report Start Date: 4/16/2013

Com

CREW TRAVEL FROM YARD TO LOCATION

JSA (TENET #6---MAINTAIN INTEGRITY OF DEDICATED SYSTEMS-E-COLORS AND HAZARD WHEEL), CALLIPERED 2 3/8" TUBING ELEVATORS. BLED WELL DOWN, 100 PSI ON CASING.

CONTINUE JARRING ON FISH, PULLING 60,000 # OVER (TUBING WEIGHT 33,000 #),OVERRRSHOT CAME LOOSE FROM FISH?

TOH W/ 137 JTS 2 3/8" PA WORKSTRING, XO, ADCCELERATOR, 8 - 3 1/8" DC's. XO, JARS, BUMPER SUB, OVERSHOT, AND 1 JT 2 3/8" L-80 TUBING. PARTED @ THREADS, WITH TUBING THREADS INSIDE BOX OF CROSSOVER. TOF @ 4570 BY TBG TALLEY. SECURED WELL, SDFD.

CREW TRAVEL FROM LOCATION TO YARD

Report Start Date: 4/17/2013

Com

CREW TRAVEL FROM YARD TO LOCATION

JSA (TENET #7---COMPLY WILL ALL APPLICABLE RULES AND REGULATIONS-E-COLORS AND HAZARD WHEEL), CALLIPERED 2 3/8" TUBING ELEVATORS. BLED WELL DOWN, 100 PSI ON CASING.

PU BHA AS FOLLOWS: 3 7/8" ROUND NOSE MILL (.45), XO (1.31), 1 JT 2 3/8" PA6 (31.8, XO (1.26), JARS (12.03), XO (2.30), 6 - 3 1/8" DC'S (181.45), XO (.93), ACCELERATER (10.53), XO (1.01). BHA TOTAL (242.45). WELL GASSING, PUMPED 70 BBLS 10# BRINE DOWN TUBING

TIH W/ 140 jts 2 3/8" PA6 WS. PU SWIVEL AND INSTALLED STRIPPER HEAD.

EST. CIRCULATION WITH AIR UNIT.



Summary Report

Major Rig Work Over (MRWO)

Stimulation

Job Start Date: 3/25/2013

Job End Date: 4/29/2013

Well Name CENTRAL VACUUM UNIT 081		Lease Central Vacuum Unit	Field Name Vacuum	Business Unit Mid-Continent/Alaska	
Ground Elevation (ft) 3,998.00	Original RKB (ft) 4,010.00	Current RKB Elevation 4,010.00, <elvdttmstart>		Mud Line Elevation (ft)	Water Depth (ft)

Com

START MILLING @ 60 RPM W/ 2 PTS ON MILL @ 4570. TUBING PRESSURE @ 1350 PSI, CASING 350 PSI. AROUND 45 MINUTES INTO MILLING NOTICED THAT WE STARTED TO TORQUE UP FROM 800 - 1200 FT/LBS. MADE 4 INCHES IN THE FIRST 1 1/2 - 2 HRS. NO PROGRESS IN THE LAST 3 HRS OF MILLING. TORQUE WAS FLUCTUATING FROM 750 - 950 FT/LBS WITH 3 TO 4 PTS ON MILL AND ROTATING 50 - 60 RPM. FEELS LIKE WE COULD BE INSIDE XO BOX. TUBING PRESSURE WAS STILL 1350 PSI W/ CASING PRESSURE @ 380#. NO VISIBLE RETURNS @ MANIFOLD DURING MILLING. TOTAL BBLS PUMPED WITH AIR UNIT 271 BBLS. AVG AROUND 5 GLNS OF SOAP P/HR.

KILLED WELL WITH 17 BBLS BRINE, LAYED DOWN POWER SWIVEL AND 1 JT. TOH W/ 5 STDS TO PUT EOT @ 4228'. PREP TO PULL AND LOOK @ BHA. SECURED WELL. SDFD.

CREW TRAVEL

Report Start Date: 4/18/2013

Com

CREW TRAVEL FROM YARD TO LOCATION

JSA (TENET #8--ADDRESS ABNORMAL CONDITIONS), CALLIPERED 2 3/8" TUBING ELEVATORS. BLED WELL DOWN, 400 TBG, 900 csg.

TOH W/ 139 jts 2 3/8" PA 6 WS, 6- DC, 1 - JT 2 3/8", XO, ROUND NOSE MILL. THERE WAS INDICATION ON MILL THAT WE WERE INSIDE XO SUB.

WAIT FOR SHOE

PU BHA AS FOLLOWS: 3 7/8" RID, SOD SHOE (4.32), XO (1.95), JARS12.03, XO (2.30), 6 - 3 1/8" DC'S (181.45), XO (.93), ACCELERATER (10.53), XO (1.01). BHA TOTAL (214.52). WELL GASSING, PUMPED 45 BBLS DOWN CASING, 20 BBLS DOWN TBG

TIH W/ 140 JTS, PU SWIVEL, PUT STRIPPER HEAD.

EST. CIRCULATION

MILLED/DRESSED TOP OF XO SUB @ 4570 @ 60 RPM. GRADUALLY INCREASED FROM 2 PTS TO 4 PT WEIGHT ON SHOE. MADE ABOUT 4". SLOW MILLING,

CIRCULATE HOLE CLEAN, BLED DOWN PRESSURE, PUMPED 30 BBLS TO KILL WELL

LD PWR SWIVEL AND 1 JT, PULLED 5 STDS , SECURED WELL. SDFD.

CREW TRAVEL FROM YARD TO LOCATION

Report Start Date: 4/19/2013

Com

CREW TRAVEL FROM YARD TO LOCATION

JSA (TENET #9--ADDRESS ABNORMAL CONDITIONS), DISCUSSED AND PARTICIPATE IN SAFETY DRILLS. CALLIPERED 2 3/8" TUBING ELEVATORS.

BLED WELL DOWN, CSG 900, TBG 450. PUMPED 60 BBLS DOWN CSG, 20 BBLS DOWN TUBING

TOH W/ 139 jts 2 3/8" PA 6 WS, 6- DC, 1 - JT 2 3/8", XO, SHOE TAPERED ID SHOE SHOWED VERY LITTLE WEAR ON KUT RITE. CALLED REMEDIAL ENGINEER TO DISCUSSED. DECISION WAS MADE TO TIH TO CHECK OUT 3 1/8" XO SUB TO SEE IF XO SUB WAS PARTED OR NOT SINCE THRU TUBING SOLUTIONS EMPLOYEE WAS NOT SAFELAND CERTIFIED. TTS SAFELAND CERTIFIED EMPLOYEE WOULD HAVE TO COME FROM ELK CITY, OK.

KEY RIG 462 FIRST AID INCIDENT INVESTIGATION.

TIH W/ 3 7/8" OVERSHOT W/ 3 1/8" GRAPPLE, DC'S, BUMPER SUB, 140 JTS TO ENGAGE FISH @ 4570'. DECIDED TO GET OFF FISH AFTER CONFIRMING THAT XO SUB WAS STILL INTACT AND NOT PARTED. HAD TO PU POWERSWIVEL TO RELEASE GRAPPLE FROM FISH. LAYED DOWN POWER SWIVEL.

POOH WITH 60 JTS OF TUBING, LEFT 2425' OF KILL STRING. SECURED WELL. SDFD.

CREW TRAVEL BACK HOME.

Report Start Date: 4/20/2013

Com

CREW TRAVEL FROM YARD TO LOCATION

JSA (TENET #10-INVOLVE THE RIGHT PEOPLE IN DECISIONS THAT AFFECT PROCEDURES AND EQUIPMENT), CALLIPERED 2 3/8" TUBING ELEVATORS. SITE SPECIFIC ON TTS EMPLOYEE.

BLED WELL DOWN, CSG 100, TBG 450. PUMPED 60 BBLS DOWN CSG, 10 BBLS DOWN TUBING.

POOH W/ 70 JTS OF 2 3/8" PA6 WS, DC'S,AND BHA.

PU BHA AS FOLLOWS: 3.750 ROUND NOSE MILL (.98), MOTOR (13.45), .5 DEGREE SUB (1.5), BPV (1.41), XO (2.0), AND 140 JTS. PU 6 MORE JTS TO TAG @ 4570'. POOH W/ 10 STDS TO PUT US ABOVE PERFS. NU STRIPPER HEAD, AND INSTALLED INLINE FILTER TO REVERSE UNIT PUMP.

AFTER DISCUSSING W/ TTS TOOL HAND, JAMES LOVELL, AND JAY STOCKTON (RE), MADE DECISION NOT TO BEGIN MILLING UNTIL MONDAY MORNING SINCE WE WOULD ONLY MILL ONLY A FEW INCHES, THEN WOULD HAVE TO PU BHA ABOVE PERFS (300') AND HIGH PROBABILITY THAT WE WOULD END UP LOSING OUR ORIENTATION ON TOP OF FISH @ 4570' WHEN WE WOULD GO BACK IN MONDAY MORNING. (NO WHIPSTOCK IN PLACE).

CREW TRAVEL HOME

Report Start Date: 4/22/2013

Com

CREW TRAVEL FROM YARD TO LOCATION

JSA (TENET #2- OPERATE IN A SAFE AND CONTROLLED CONDITION), CALLIPERED 2 3/8" TUBING ELEVATORS. CHECKED WELL PSI

BLED WELL DOWN, CSG 450, TBG 0.



Summary Report

Major Rig Work Over (MRWO)

Stimulation

Job Start Date: 3/25/2013

Job End Date: 4/29/2013

Well Name CENTRAL VACUUM UNIT 081		Lease Central Vacuum Unit	Field Name Vacuum	Business Unit Mid-Continent/Alaska	
Ground Elevation (ft) 3,998.00	Original RKB (ft) 4,010.00	Current RKB Elevation 4,010.00, <elvdttmstart>		Mud Line Elevation (ft)	Water Depth (ft)

Com

PU POWER SWIVEL, START PUMPING @ 3 BPM @ 1450 PSI. TAG UP FISH @ 4570, STARTED MILLING WITH 1 PT, PSI CAME UP SLOWLY. WORKED OURSELVES UP TO 3 PTS WEIGHT ON ROUNDNOSE MILL, PSI @ 1700. MILLED ABOUT 4 INCHES IN 45 MINS. THEN WE LOST ABOUT 2 1/2 PTS OF WEIGHT AND LOST ABOUT 200 PSI, BACK TO STARTING PRESSURE (1450 PSI). BEGAN TO WORK MILL BY FEATHERING, SAW SMALL INCREASE OF TORQUE ON MILL WITH VERY LITTLE HOLE BEING MADE. INCREASED TO 3 PTS, ON MILL, PSI WOULD INCREASE TO AROUND 1600 PSI, BUT VERY LITTLE HOLE BEING MADE. INCREASE WEIGHT AND WORKED WITH MILL WITH 6 - 8 PTS, PSI WOULD INCREASE TO 1800 - 1900 PSI, BUT NO NOTICABLE HOLE BEING MADE. CALLED JAY STOCKTON TO DISCUSSED. AGREED TO PULL OUT AND LOOK @ MILL. PUMPED 1350 BBLS OF 10# BRINE.

RD POWER SWIVEL

TOH W/ 146 JTS WS AND TTS TOOLS. SAW MINIMAL WEAR ON MILL? DISCUSSED OPTIONS WITH JAY STOCKTON AND TTS REPS.

CREW TRAVEL

Report Start Date: 4/23/2013

Com

CREW TRAVEL FROM YARD TO LOCATION

JSA (TENET #3- ALWAYS ENSURE THAT SAFETY DEVICES ARE IN PLACE AND FUNCTIONING.), CALLIPERED 2 3/8" TUBING ELEVATORS. CHECKED WELL PSI. "0"

TIH W/ TAPERED MILL, AND 147 JTS OF 2 3/8" PA6 WORKSTRING. PU POWER SWIVEL AND 1 JT. INSTALLED STRIPPER HEAD

BREAK CIRCULATION W/ AIR UNIT

START MILLING @ 4570' W/ 1 TO 1 1/2 POINTS AND 60 RPM. GRADUALLY INCREASED THROUGH OUT THE DAY. GOOD TORQUE ACTION UNTIL END OF DAY. MILL LIGHTLY TORQUED UP W/ 6 - 8 PTS. MILL QUIT CUTTING. MADE 10" OF HOLE. VERY SMALL AMOUNT OF FINE METAL RETURNS.

CIRCULATE HOLE CLEAN

RD POWER SWIVEL. PULLED 5 STDS TO PUT US ABOVE PERFS.

CREW TRAVEL

Report Start Date: 4/24/2013

Com

CREW TRAVEL FROM YARD TO LOCATION

JSA (TENET #3- ALWAYS FOLLOW SAFE WORK PRACTICES AND PROCEDURES), CALLIPERED 2 3/8" TUBING ELEVATORS. CHECKED WELL PSI. "600" CSG/ TBG 100 PSI

BLD WELL DOWN AND PUMPED 60 BBLS DOWN CASING, 20 TBG

TOH W/ 136 JTS AND TAPER MILL. MILL WORN OUT ON TIP

WAIT ON ORDERS

TIH W/ ROUNDNOSE MILL, ON 147 JTS, PU SWIVEL, INSTALLED STRIPPER HEAD, PU POWER SWIVEL.

BREAK CIRCULATION

START MILLING - 50 RPM W/ 1 PT ON ROUND NOSE MILL @ 4570 +/- . MILLED FOR 3 HRS - MADE 2 -3 INCHES BEFORE MILL WAS NOT MAKING ANY MORE HOLE.. PU TUBING TO CIRCULATE HOLE CLEAN, BLED WELL DOWN & KILLED WELL. LAYED DOWN POWER SWIVEL, TOH W/ 5 STDS TO PUT US ABOVE PERFS. SECURED WELL, SDFD.

CREW TRAVEL FROM YARD TO LOCATION

Report Start Date: 4/25/2013

Com

CREW TRAVEL FROM YARD TO LOCATION

JSA (TENET #5- ALWAYS MEET OR EXCEED CUSTOMER'S REQUIREMENTS), CALLIPERED 2 3/8" TUBING ELEVATORS. CHECKED WELL PSI. "750" CSG/ TBG 250 PSI.

BLD WELL DOWN AND PUMPED 60 BBLS DOWN CASING, 20 TBG

DECISION WAS MADE TO PUT WELL BACK TO INJECTION. LAYED DOWN ALL WORK STRING AND DRILL COLLARS. HAD TO GO SLOW DUE TO WIND. SWA, MADE ADJUSTMENTS TO HYDRAWALK IN RELATION TO RIG FLOOR HEIGHT TO MAKE JOB TASK EASIER FOR FLOORHAND. ROUND NOSE BIT HAD CIRCULAR WEAR LIKE WE ARE INSIDE XO SUB ABOVE DRILL COLLARS.

CREW TRAVEL

Report Start Date: 4/26/2013

Com

CREW TRAVEL FROM YARD TO LOCATION

JSA (TENET #6- ALWAYS MAINTAIN INTEGRITY OF DEDICATED SYSTEMS), CALLIPERED 2 3/8" TUBING ELEVATORS. CHECKED WELL PSI. 100 PSI. SAFETY DRILLS

BLD WELL DOWN AND PUMPED 60 BBLS DOWN CASING. MOVED OUT 2 3/8" PH-6 WS, MI 11 JTS OF 2 3/8" FIBERLINE TBG.

PU BHA & TIH HYDROTESTING INJECTION TUBING AS FOLLOWS: PEAK 4.5" X 2 3/8" ARROWSET 1X INJ PKR NP W/ 1.43 "F" PROFILE NIPPLE, 2 3/8" O/O TOOL W/ 316SS TOP SUB, 134 - 2 3/8" J-55 FIBLERLINE TBG, 2 - 10' SUBS, 2 3/8 TRANSITION NIPPLE 316SS TO FIBERLINE, TUBING HANGER. SET PKR @ 4254.47'. TUBING WAS HYDROTESTED TO 3000 PSI BELOW SLIPS.

TOP OFF CASING W/ 10# BRINE, PRESSURED UP TO 500 PSI, LOST 60 PSI IN 30 MINS. BLED PRESSURE, RETEST TO 500 PSI, LOST 10# IN 10 MINS. GOOD TEST.

RELEASED FROM PKR, CIRCULATE 65 BBLS OF PKR FLUID. LATCH ON TO PKR. PREP FLOOR FOR REMOVAL OF BOP. WILL REMOVE BOP MONDAY AND DO MIT. CALLED OCD (MAXEY BROWN) TO LET HIM KNOW.



Summary Report

Major Rig Work Over (MRWO)

Stimulation

Job Start Date: 3/25/2013

Job End Date: 4/29/2013

Well Name CENTRAL VACUUM UNIT 081		Lease Central Vacuum Unit	Field Name Vacuum	Business Unit Mid-Continent/Alaska	
Ground Elevation (ft) 3,998.00	Original RKB (ft) 4,010.00	Current RKB Elevation 4,010.00, <elvdttmstart>		Mud Line Elevation (ft)	Water Depth (ft)

Com

CREW TRAVEL

Report Start Date: 4/29/2013

Com

CREW TRAVEL FROM YARD TO LOCATION

JSA (TENET #9- ALWAYS FOLLOW WRITTEN PROCEDURES FOR HIGH RISK OR UNUSUAL SITUATIONS. CALLIPERED 2 3/8" TUBING ELEVATORS. CHECKED WELL PSI. 100 PSI. ON TUBING, CASING DEAD. BLED PSI OFF TUBING.
NDBOP, LANDED TUBING ON WELL. PKR SET @ 4254.47' WITH 10 K COMPRESSION ON PKR. .
INSTALLED CO2 TREE, TEST SEAL TO 3200 PSI FOR 10 MINS. BLEW OUT PUMP OUT PLUG @ 1100 PSI. RUN MIT TEST, LEFT ALL CASING VALVES OPEN DURING TEST TO CHECK FOR LEAKS. NO LEAKS. MIT TEST TO 540 PSI LOST 10# PSI IN 35 MINS. INJECT 25 BBLS 10 # BRINE IN TO WELL @ 800 PSI. GOOD TEST. LOAD UP 158 JTS OF 2 3/8" PH6 WORKSTRING. MOVE OUT PIPE RACKS, MOVE OUT HYDRAWALK.

NOTE: FISH LEFT IN WELL AS FOLLOWS: XO, 6 - DC'S, STRING MILL, XO, CONE BUSTER MILL. TOP OF FISH @ 4570. BTM OF FISH @ 4760'.
RD PULLING, CLEAN LOCATION, BEGIN TO MOVE EQUIPMENT TO VGWU #99.