

DISTRICT I
1625 N. French Dr., Hobbs, NM 88240
DISTRICT II
1301 W. Grand Avenue, Artesia, NM 88210
DISTRICT III
1000 Rio Brazos Rd., Aztec, NM 87410
DISTRICT IV
1220 S. St. Francis Dr., Santa Fe, NM 87505

State of New Mexico
Energy, Minerals and Natural Resources Department

Form C-102
Revised July 16, 2010

Submit one copy to appropriate
District Office

OIL CONSERVATION DIVISION HOBBS OGD
1220 South St. Francis Dr.
Santa Fe, New Mexico 87505

MAY 10 2013

☐ AMENDED REPORT

WELL LOCATION AND ACREAGE DEDICATION PLAT

API Number 30-025-40693	Pool Code 41460	Pool Name LUSK; BONE SPRING, SOUTH
Property Code 39355	Property Name LUSK "34" FEDERAL	Well Number 2H
GRID No. 873	Operator Name APACHE CORPORATION	Elevation 3569'

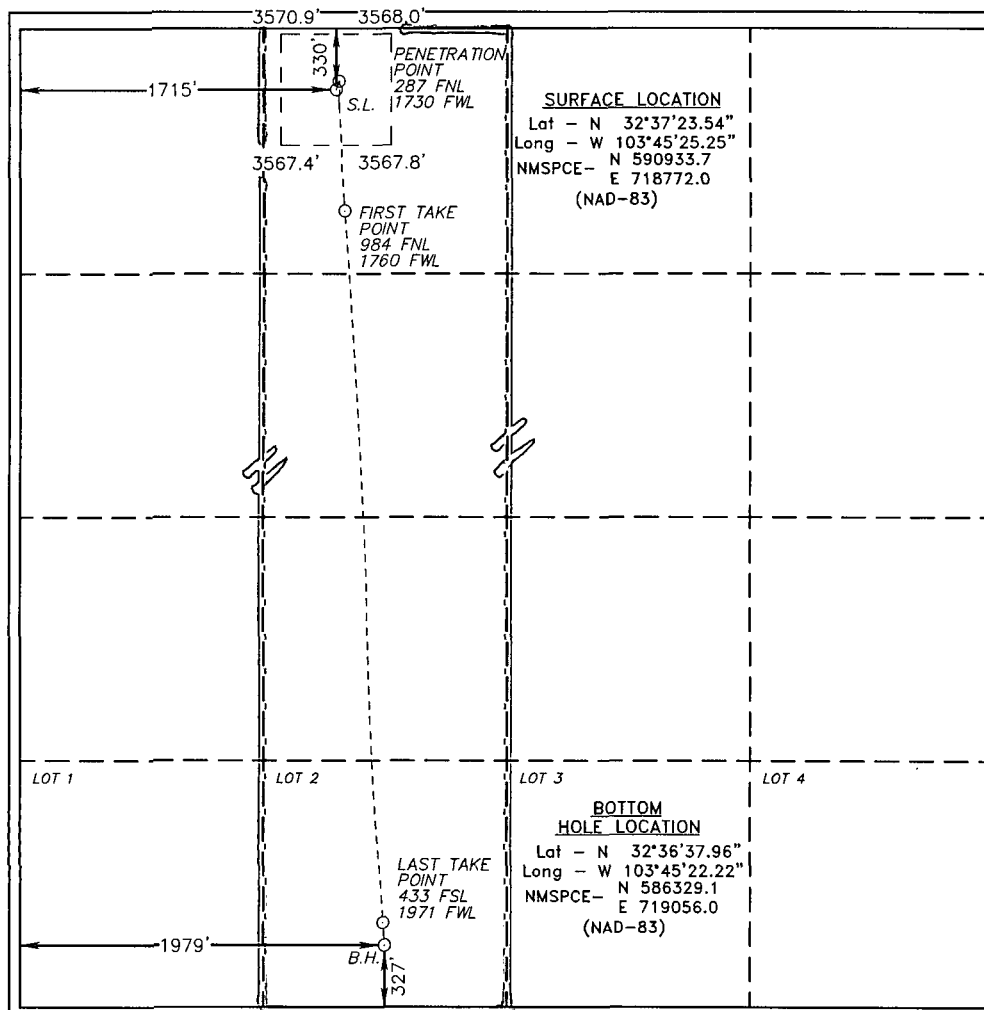
Surface Location

UL or lot No. C	Section 34	Township 19 S	Range 32 E	Lot Idn	Feet from the 330	North/South line NORTH	Feet from the 1715	East/West line WEST	County LEA
--------------------	---------------	------------------	---------------	---------	----------------------	---------------------------	-----------------------	------------------------	---------------

Bottom Hole Location If Different From Surface

UL or lot No. LOT 2	Section 34	Township 19 S	Range 32 E	Lot Idn	Feet from the 4935 327	North/South line N SOUTH	Feet from the 1989 1979	East/West line WEST	County LEA
Dedicated Acres 159.43	Joint or Infill	Consolidation Code	Order No.						

NO ALLOWABLE WILL BE ASSIGNED TO THIS COMPLETION UNTIL ALL INTERESTS HAVE BEEN CONSOLIDATED
OR A NON-STANDARD UNIT HAS BEEN APPROVED BY THE DIVISION



OPERATOR CERTIFICATION

I hereby certify that the information contained herein is true and complete to the best of my knowledge and belief, and that this organization either owns a working interest or unleased mineral interest in the land including the proposed bottom hole location or has a right to drill this well at this location pursuant to a contract with an owner of such a mineral or working interest, or to a voluntary pooling agreement or a compulsory pooling order heretofore entered by the division.

Signature *Fatima Vasquez* Date 05/03/13
Printed Name Fatima Vasquez
Email Address Fatima.Vasquez@apachecorp.com

SURVEYOR CERTIFICATION

I hereby certify that the well location shown on this plat was plotted from field notes of actual surveys made by me or under my supervision, and that the same is true and correct to the best of my belief.

Date Surveyed
Signature & Seal of Professional Surveyor
W.O. 24237

Certificate No. Gary L. Jones 7977

Basin Surveys 24237

JUN 11 2013