

Submit 1 Copy To Appropriate District
Office
District I - (575) 393-6161
1625 N. French Dr., Hobbs, NM 88240
District II - (575) 748-1283
811 S. First St., Artesia, NM 88210
District III - (505) 334-6178
1000 Rio Brazos Rd., Aztec, NM 87410
District IV - (505) 476-3460
1220 S. St. Francis Dr., Santa Fe, NM
87505

State of New Mexico
Energy, Minerals and Natural Resources

OIL CONSERVATION DIVISION
1220 South St. Francis Dr.
Santa Fe, NM 87505

Form C-103
Revised August 1, 2011

SUNDRY NOTICES AND REPORTS ON WELLS (DO NOT USE THIS FORM FOR PROPOSALS TO DRILL OR TO DEEPEN OR PLUG BACK TO A DIFFERENT RESERVOIR. USE "APPLICATION FOR PERMIT" (FORM C-101) FOR SUCH PROPOSALS.)		WELL API NO. 30-005-00936 ✓
1. Type of Well: Oil Well <input type="checkbox"/> Gas Well <input type="checkbox"/> Other Injection <input checked="" type="checkbox"/> HOBBS OCD		5. Indicate Type of Lease STATE <input checked="" type="checkbox"/> FEE <input type="checkbox"/>
2. Name of Operator Celero Energy II, LP		6. State Oil & Gas Lease No.
3. Address of Operator 400 W. Illinois, Ste. 1601 Midland, TX 79701		7. Lease Name or Unit Agreement Name Rock Queen Unit ✓
4. Well Location Unit Letter <u>F</u> : 1980 feet from the <u>N</u> line and 1980 feet from the <u>W</u> line Section <u>36</u> Township <u>13S</u> Range <u>31E</u> NMPM County <u>Chaves</u>		8. Well Number <u>87</u> ✓
11. Elevation (Show whether DR, RKB, RT, GR, etc.)		9. OGRID Number 247128
		10. Pool name or Wildcat

RECEIVED

12. Check Appropriate Box to Indicate Nature of Notice, Report or Other Data

NOTICE OF INTENTION TO:

PERFORM REMEDIAL WORK ☐ PLUG AND ABANDON ☐
TEMPORARILY ABANDON ☐ CHANGE PLANS ☐
PULL OR ALTER CASING ☐ MULTIPLE COMPL ☐
DOWNHOLE COMMINGLE ☐

OTHER: ☐

SUBSEQUENT REPORT OF:

REMEDIAL WORK ☒ ALTERING CASING ☐
COMMENCE DRILLING OPNS. ☐ P AND A ☐
CASING/CEMENT JOB ☐

OTHER: ☐

13. Describe proposed or completed operations. (Clearly state all pertinent details, and give pertinent dates, including estimated date of starting any proposed work). SEE RULE 19.15.7.14 NMAC. For Multiple Completions: Attach wellbore diagram of proposed completion or recompletion.

6/25/13 - NUWH & NU 3K BOP. Release packer and TOH, standing back 91 joints of 2 3/8" IPC tbg with "turned down collars" and 4" ASI-X packer. TIH w/ 3 1/4" cone buster mill, 2 - 2 7/8" drill collars and tag at 3060'. RU swivel. Knock out bridge and lower mill to 3070'. Drill from 3070' to 3075' in 1 1/2 hours, recovering salt, scale and formation. TOH, change out mill with 3 3/8" OD cone bit. Tag and 3072'. Reamed down to 3075'. Drilled from 3075' to 3086' in 2 hours. Recovering formation. Circ clean and raise bit to 2980'. To lower bit, check for fill, TOH, perforate zone, TIH w/ tbg & packer and acidize zone.

6/26/13 - Lower bit and did not tag fill. TOH w/ tbg and bit. Perforated 4 1/2" casing liner with 2 1/8" strip gun, 90 degree phasing from 3058' to 3070'; 12' & 30 holes as follows: perf 3058' to 3062' with 3 SPF; 3063' to 3070' with 2 SPF, except only one shot at 3063'. TIH w/ 2 3/8" tbg string with Globe Energy's 4" ASI-X packer. Set packer at 2971'. Acidize perforations from 3058' to 3070' with 1350 gallons of 7 1/2% NE-FE acid + 150 gal of Xylene and 1250 # of rock salt in two blocking stages. Flushed with 65 BFW, 52 barrels over flush.

* Continued on attached sheet

Spud Date:

Rig Release Date:

I hereby certify that the information above is true and complete to the best of my knowledge and belief.

SIGNATURE

Lisa Hunt

TITLE Regulatory Analyst

DATE 07/01/2013

Type or print name Lisa Hunt

E-mail address: lhunt@celeroenergy.com

PHONE: (432)686-1883

For State Use Only

APPROVED BY:

[Signature]

TITLE

Dist. Mgr

DATE 7-9-2013

Conditions of Approval (if any):

JUL 09 2013

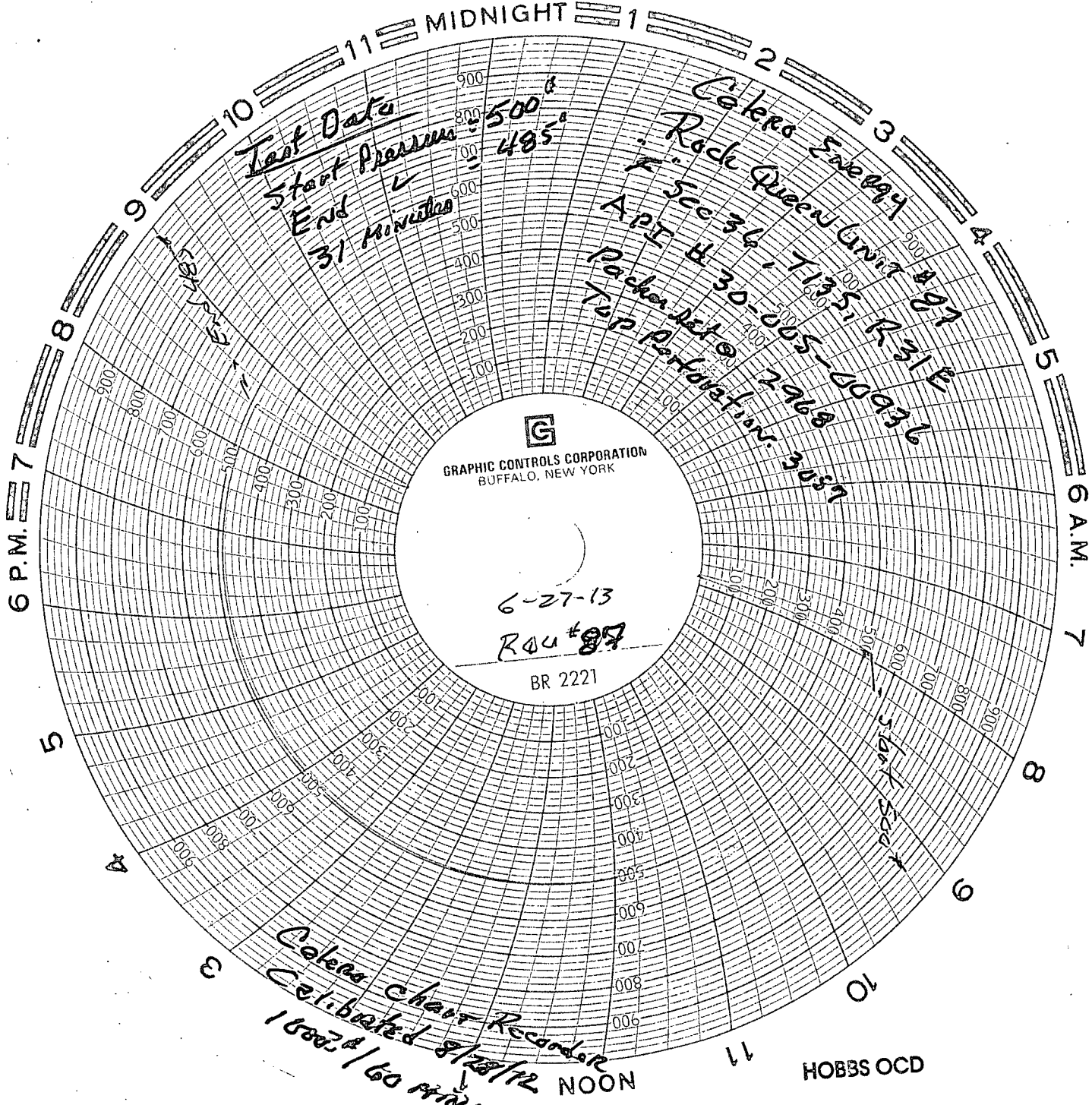
HOBBS OCD

JUL 05 2013

Rock Queen Unit #87 – C103 continued

RECEIVED

6/27/13 - Release pkr & TOH, LD 2 3/8" OD tbg WS & treating pkr. Change out WH's. Replaced 4 1/2" Larkin WH with Weatherford's 4 1/2" screw bottom by 7 1/16" flange top casing head. TIH w/ 91 jts of 2 3/8" OD 4.7# 8rd EUE J-55 regular IPC tbg w/ "turned down collars" plus Globe Energy's 4" nickel plated AS1-X pkr w/ T-2 on-off tool & 1.50 "F" profile nipple. Set pkr from 2961' to 2968' w/ 7 pts of compression. Release on-off tool from pkr & circ pkr fluid. Latch back onto pkr. NDBOP & NUWH. 7 1/16" slip type flange bolted onto 7 1/16" casing head flange x 2 3/8" tbg w/ 2" full opening Al-Br tubing valve. Call Maxie Brown with OCD. Ran 31 minute MIT. Tested from 500 psi to 485 psi & test was acceptable. Copy of chart is attached. Connect well to injection & resume injecting.



HOBBS OCD
JUL 05 2013
RECEIVED