

HOEBS OCD

District I
1625 N. French Dr., Hobbs, NM 88240
Phone: (575) 293-6161 Fax: (575) 293-0720

District II
811 S. First St., Artesia, NM 88210
Phone: (575) 748-1283 Fax: (575) 748-9720

District III
1000 Rio Brazos Road, Aztec, NM 87410
Phone: (505) 334-6178 Fax: (505) 334-6170

District IV
1220 S. St. Francis Dr., Santa Fe, NM 87505
Phone: (505) 476-3460 Fax: (505) 476-3462

State of New Mexico
Energy, Minerals & Natural Resources Department
OIL CONSERVATION DIVISION
1220 South St. Francis Dr.
Santa Fe, NM 87505

Form C-102
Revised August 1, 2011
Submit one copy to appropriate
District Office
☐ AMENDED REPORT

JUL 05 2013

RECEIVED

WELL LOCATION AND ACREAGE DEDICATION PLAT

¹ API Number 30-025-4253	² Pool Code 59900	³ Pool Name TRIPLE X; BONE SPRING
⁴ Property Code 30884	⁵ Property Name THISTLE UNIT	⁶ Well Number 48H
⁷ GRID No. 6137	⁸ Operator Name DEVON ENERGY PRODUCTION COMPANY, L.P.	⁹ Elevation 3640.4

¹⁰ Surface Location

UL or lot no.	Section	Township	Range	Lot Idn	Feet from the	North/South line	Feet from the	East/West line	County
N	34	23 S	33 E		280	SOUTH	2561	WEST	LEA

¹¹ Bottom Hole Location If Different From Surface

UL or lot no.	Section	Township	Range	Lot Idn	Feet from the	North/South line	Feet from the	East/West line	County
C	34	23 S	33 E		330	NORTH	1980	WEST	LEA

¹² Dedicated Acres 160	¹³ Joint or Infill	¹⁴ Consolidation Code	¹⁵ Order No.
--------------------------------------	-------------------------------	----------------------------------	-------------------------

No allowable will be assigned to this completion until all interests have been consolidated or a non-standard unit has been approved by the division.

<p>N89°41'34"E 2640.56 FT</p> <p>NW CORNER SEC. 34 LAT. = 32.2685723°N LONG. = 103.5688255°W NMSP EAST (FT) N = 462281.34 E = 777635.45</p> <p>W O CORNER SEC. 34 LAT. = 32.2613005°N LONG. = 103.5688182°W NMSP EAST (FT) N = 459635.90 E = 777656.55</p> <p>SW CORNER SEC. 34 LAT. = 32.2540344°N LONG. = 103.5688168°W NMSP EAST (FT) N = 456992.49 E = 777675.80</p> <p>NOTE: LATITUDE AND LONGITUDE COORDINATES ARE SHOWN USING THE NORTH AMERICAN DATUM OF 1983 (NAD83). LISTED NEW MEXICO STATE PLANE EAST COORDINATES ARE GRID (NAD83). BASIS OF BEARING AND DISTANCES USED ARE NEW MEXICO STATE PLANE EAST COORDINATES MODIFIED TO THE SURFACE.</p>		<p>N89°41'34"E 2640.56 FT</p> <p>NE CORNER SEC. 34 LAT. = 32.2685456°N LONG. = 103.5517436°W NMSP EAST (FT) N = 462309.64 E = 782915.41</p> <p>THISTLE UNIT #48H ELEV. = 3640.4' LAT. = 32.2547923°N (NAD83) LONG. = 103.5605343°W NMSP EAST (FT) N = 457286.54 E = 780234.28</p> <p>SE CORNER SEC. 34 LAT. = 32.2540100°N LONG. = 103.5517413°W NMSP EAST (FT) N = 457021.62 E = 782954.62</p>		<p>¹⁷ OPERATOR CERTIFICATION</p> <p>I hereby certify that the information contained herein is true and complete to the best of my knowledge and belief, and that this organization either owns a working interest or unleased mineral interest in the land including the proposed bottom hole location or has a right to drill this well at this location pursuant to a contract with an owner of such a mineral or working interest, or to a voluntary pooling agreement or a compulsory pooling order heretofore entered by the division.</p> <p><i>[Signature]</i> 7/3/2013 Signature Date David H. Cook Regulatory Specialist Printed Name david.cook@dvn.com E-mail Address</p>
<p>1980'</p> <p>330'</p> <p>BOTTOM OF HOLE</p> <p>BOTTOM OF HOLE LAT. = 32.2676557°N LONG. = 103.5624202°W NMSP EAST (FT) N = 461962.03 E = 779617.66</p>		<p>2561'</p> <p>280'</p> <p>SURFACE LOCATION</p>		<p>¹⁸ SURVEYOR CERTIFICATION</p> <p>I hereby certify that the well location shown on this plat was plotted from field notes of actual surveys made by me or under my supervision, and that the same is true and correct to the best of my belief.</p> <p>JUNE 7, 2013 Date of Survey WILLIAM F. JAHAMILL Signature and Seal of Professional Surveyor Certificate Number: WILLIAM F. JAHAMILL, PLS 12797 SURVEY NO. 1883</p>

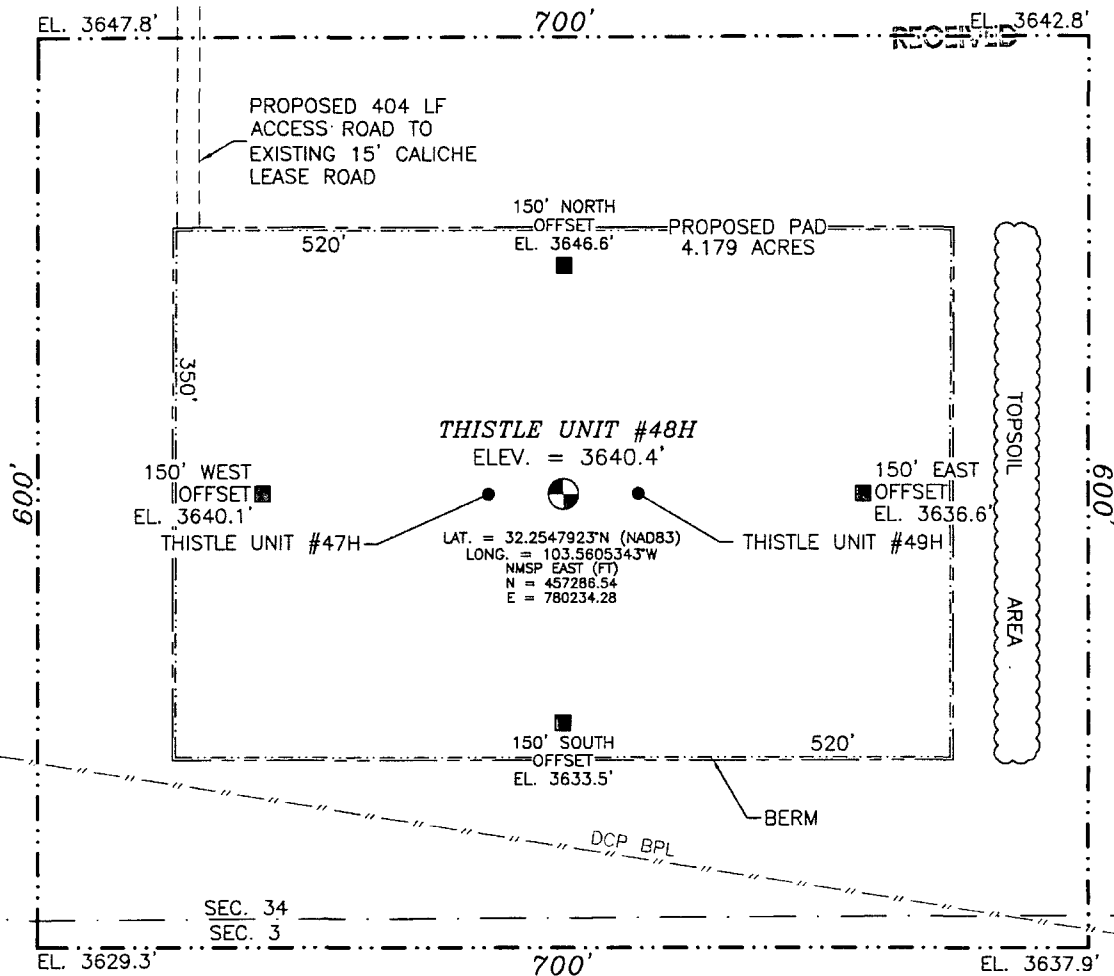
JUL 11 2013

SECTION 34, TOWNSHIP 23 SOUTH, RANGE 33 EAST, N.M.P.M.
LEA COUNTY, STATE OF NEW MEXICO
SITE MAP

NOTE: LATITUDE AND LONGITUDE COORDINATES ARE SHOWN USING THE NORTH AMERICAN DATUM OF 1983 (NAD83). LISTED NEW MEXICO STATE PLANE EAST COORDINATES ARE GRID (NAD83). BASIS OF BEARING AND DISTANCES USED ARE NEW MEXICO STATE PLANE EAST COORDINATES MODIFIED TO THE SURFACE.

HOEBS OCD

JUL 05 2013



0 10 50 100 200

SCALE 1" = 100'

DIRECTIONS TO LOCATION

FROM THE INTERSECTION OF STATE HIGHWAY 128 AND CR J2 (BRININSTOOL) GO NORTHWEST ON CR J2 FOR APPROX. 3.2 MILES. GO EAST ON CALICHE LEASE ROAD FOR APPROX. 0.46 OF A MILE. GO NORTHEAST APPROX. 220', CONTINUE EAST APPROX. 0.1 OF A MILE. LOCATION IS APPROX. 575' SOUTH.

DEVON ENERGY PRODUCTION COMPANY, L.P.

THISTLE UNIT #48H

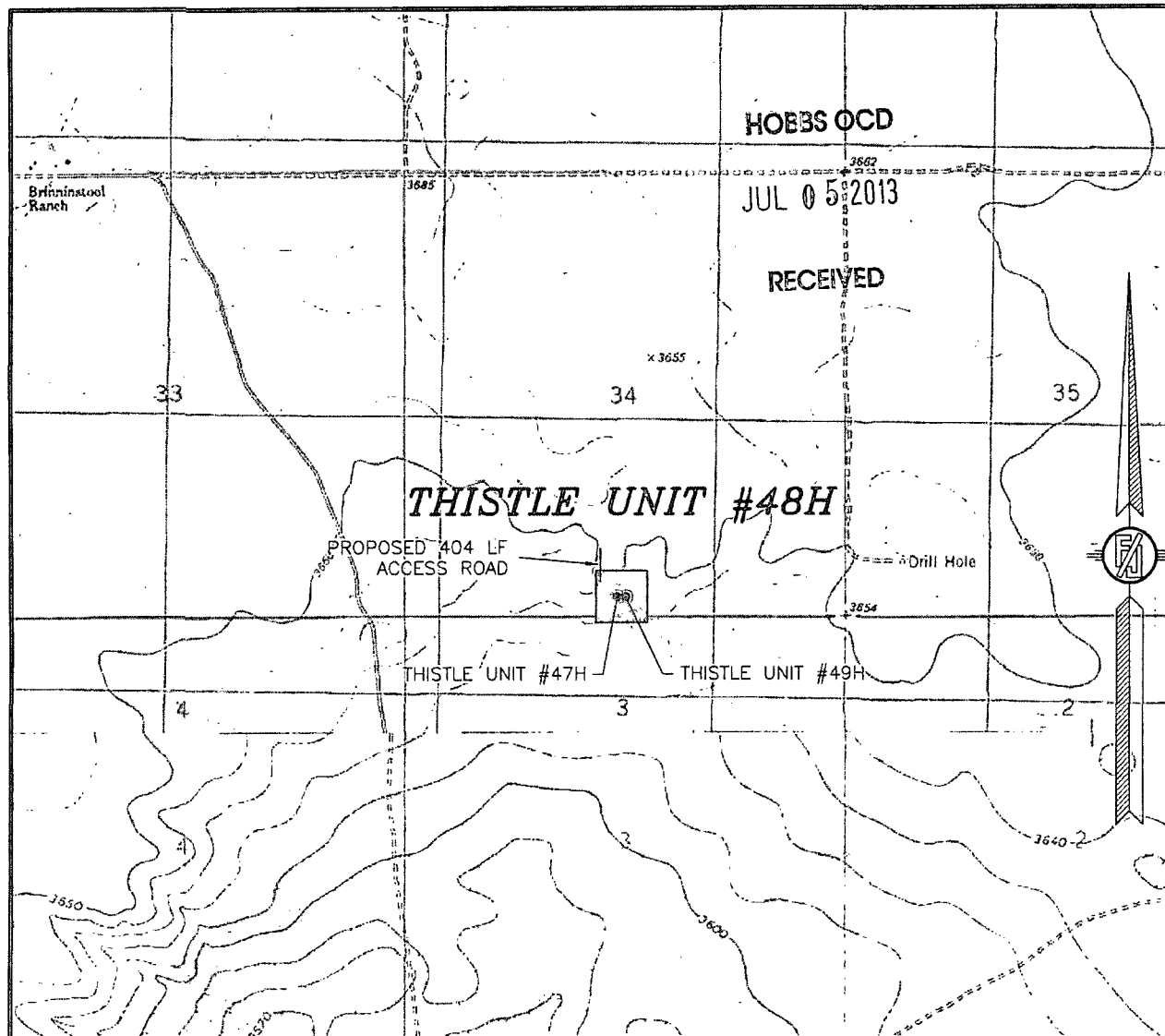
LOCATED 280 FT. FROM THE SOUTH LINE
AND 2561 FT. FROM THE WEST LINE OF
SECTION 34, TOWNSHIP 23 SOUTH,
RANGE 33 EAST, N.M.P.M.
LEA COUNTY, STATE OF NEW MEXICO

JUNE 7, 2013

SURVEY NO. 1883

MADRON SURVEYING, INC. 301 SOUTH CANAL (575) 234-3341 CARLSBAD, NEW MEXICO

SECTION 34, TOWNSHIP 23 SOUTH, RANGE 33 EAST, N.M.P.M.
LEA COUNTY, STATE OF NEW MEXICO
LOCATION VERIFICATION MAP



USGS QUAD MAP:
TIP TOP WELLS

NOT TO SCALE

DEVON ENERGY PRODUCTION COMPANY, L.P.

THISTLE UNIT #48H

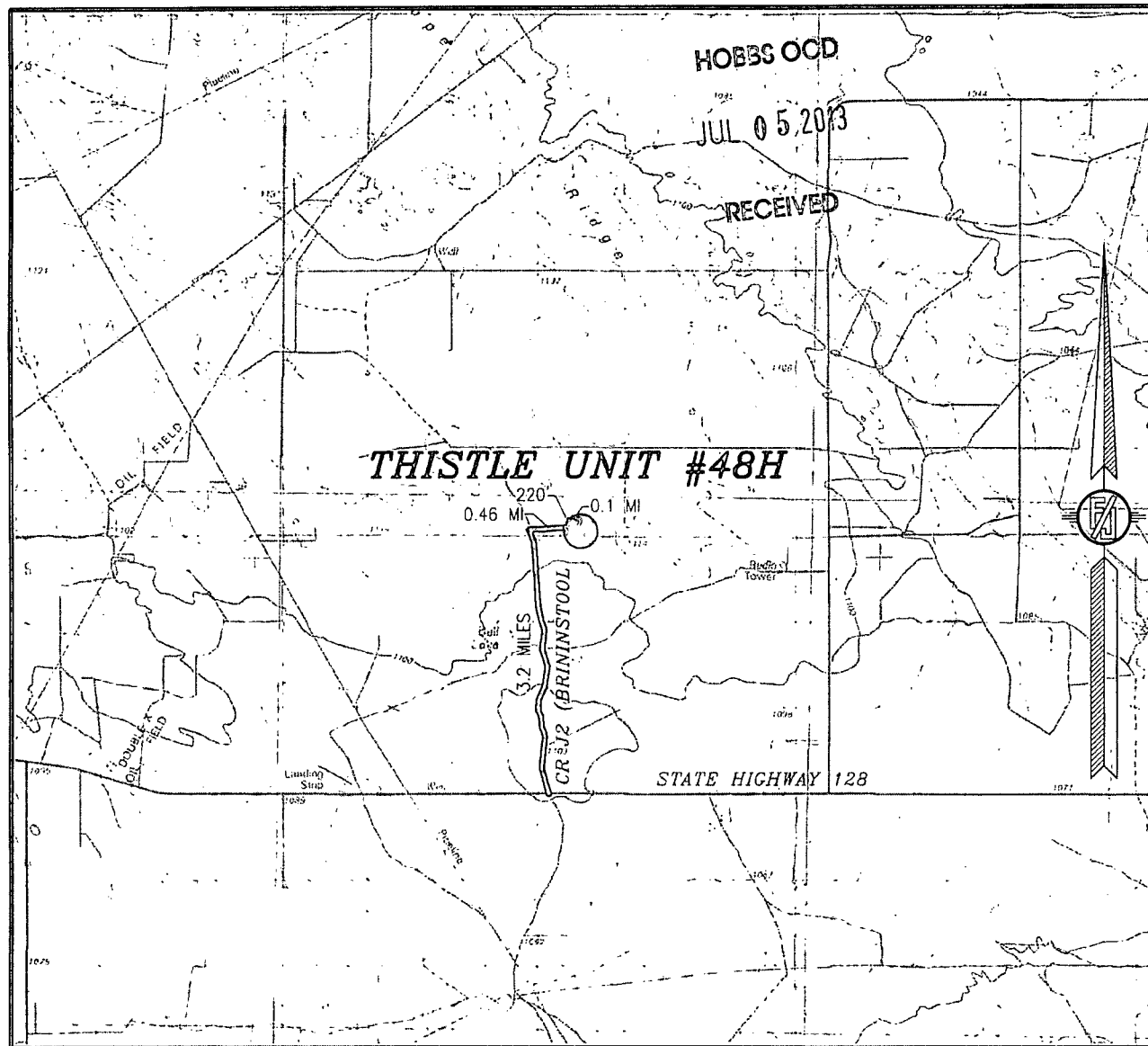
LOCATED 280 FT. FROM THE SOUTH LINE
AND 2561 FT. FROM THE WEST LINE OF
SECTION 34, TOWNSHIP 23 SOUTH,
RANGE 33 EAST, N.M.P.M.
LEA COUNTY, STATE OF NEW MEXICO

JUNE 7, 2013

SURVEY NO. 1883

MADRON SURVEYING, INC. 301 SOUTH CANAL (575) 234-3341 CARLSBAD, NEW MEXICO

SECTION 34, TOWNSHIP 23 SOUTH, RANGE 33 EAST, N.M.P.M.
LEA COUNTY, STATE OF NEW MEXICO
VICINITY MAP



NOT TO SCALE

DEVON ENERGY PRODUCTION COMPANY, L.P.

THISTLE UNIT #48H

LOCATED 280 FT. FROM THE SOUTH LINE
AND 2561 FT. FROM THE WEST LINE OF
SECTION 34, TOWNSHIP 23 SOUTH,
RANGE 33 EAST, N.M.P.M.
LEA COUNTY, STATE OF NEW MEXICO

DIRECTIONS TO LOCATION

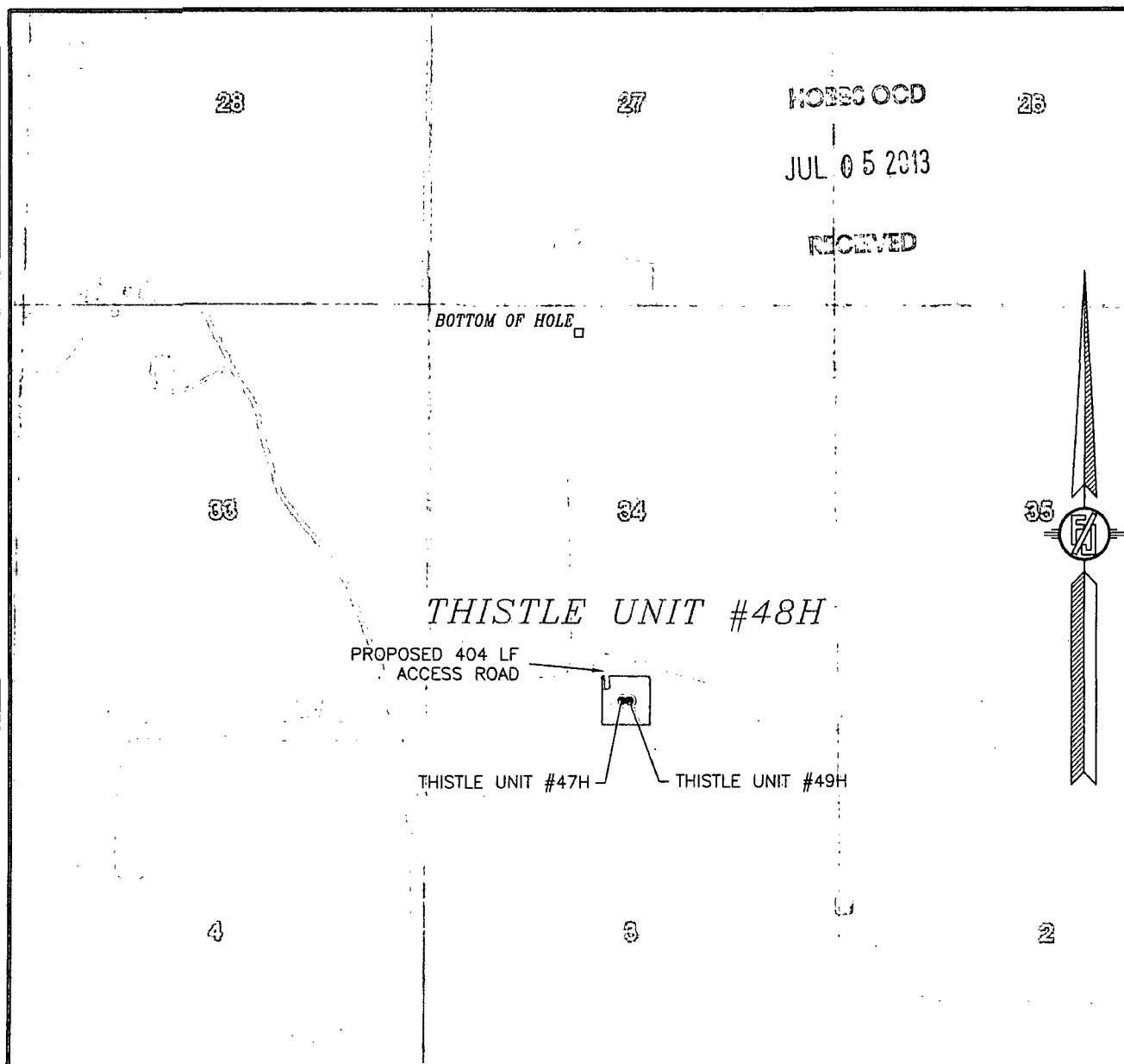
FROM THE INTERSECTION OF STATE HIGHWAY 128 AND CR J2
(BRINSTOOL) GO NORTHWEST ON CR J2 FOR APPROX. 3.2 MILES.
GO EAST ON CALICHE LEASE ROAD FOR APPROX. 0.46 OF A MILE. GO
NORTHEAST APPROX. 220', CONTINUE EAST APPROX. 0.1 OF A MILE.
LOCATION IS APPROX. 575' SOUTH.

JUNE 7, 2013

SURVEY NO. 1883

MADRON SURVEYING, INC. 301 SOUTH CANAL (575) 234-3341 CARLSBAD, NEW MEXICO

SECTION 34, TOWNSHIP 23 SOUTH, RANGE 33 EAST, N.M.P.M.
LEA COUNTY, STATE OF NEW MEXICO
AERIAL PHOTO



NOT TO SCALE
AERIAL PHOTO:
GOOGLE EARTH
MARCH 2012

DEVON ENERGY PRODUCTION COMPANY, L.P.

THISTLE UNIT #48H

LOCATED 280 FT. FROM THE SOUTH LINE
AND 2561 FT. FROM THE WEST LINE OF
SECTION 34, TOWNSHIP 23 SOUTH,
RANGE 33 EAST, N.M.P.M.
LEA COUNTY, STATE OF NEW MEXICO

JUNE 7, 2013

SURVEY NO. 1883

MADRON SURVEYING, INC. 301 SOUTH CANAL (575) 234-3341 CARLSBAD, NEW MEXICO