

HOBBS OCD

HOBBS OCD

JUL 11 2013

JUL 11

RECEIVED

District I
1625 N. French Dr., Hobbs, NM 88240
Phone: (575) 393-6161 Fax: (575) 393-0720

District II
811 S. First St., Artesia, NM 88210
Phone: (575) 748-1283 Fax: (575) 748-9720

District III
1000 Rio Brazos Road, Aztec, NM 87410
Phone: (505) 334-6178 Fax: (505) 334-6170

District IV
1220 S. St. Francis Dr., Santa Fe, NM 87505
Phone: (505) 476-3460 Fax: (505) 476-3462

State of New Mexico

RECEIVED
Energy, Minerals & Natural Resources Department
OIL CONSERVATION DIVISION

1220 South St. Francis Dr.

Santa Fe, NM 87505

Form C-102

Revised August 1, 2011

Submit one copy to appropriate

District Office

☐ AMENDED REPORT

WELL LOCATION AND ACREAGE DEDICATION PLAT

¹ API Number 30-025-41118	² Pool Code 59900	³ Pool Name TRIPLE X; BONE SPRING
⁴ Property Code 39750	⁵ Property Name THISTLE UNIT	⁶ Well Number 46H
⁷ OGRID No. 6137	⁸ Operator Name DEVON ENERGY PRODUCTION COMPANY, L.P.	⁹ Elevation 3659.5

¹⁰ Surface Location

UL or lot no.	Section	Township	Range	Lot Idn	Feet from the	North/South line	Feet from the	East/West line	County
N	33	23 S	33 E		350	SOUTH	2080	WEST	LEA

¹¹ Bottom Hole Location If Different From Surface

UL or lot no.	Section	Township	Range	Lot Idn	Feet from the	North/South line	Feet from the	East/West line	County
B	33	23 S	33 E		330	NORTH	1980	EAST	LEA

¹² Dedicated Acres 160	¹³ Joint or Infill	¹⁴ Consolidation Code	¹⁵ Order No.
--------------------------------------	-------------------------------	----------------------------------	-------------------------

No allowable will be assigned to this completion until all interests have been consolidated or a non-standard unit has been approved by the division.

<p>589°39'50"W 2638.55 FT</p> <p>NW CORNER SEC. 33 LAT. = 32.2685894°N LONG. = 103.5858855°W</p> <p>NMSP EAST (FT) N = 462250.40 E = 772362.29</p>		<p>589°39'50"W 2635.80 FT</p> <p>N Q CORNER SEC. 33 LAT. = 32.2685811°N LONG. = 103.5773510°W</p> <p>NMSP EAST (FT) N = 462265.88 E = 775000.25</p>		<p>589°39'50"W 2635.80 FT</p> <p>BOTTOM OF HOLE 1980'</p> <p>BOTTOM OF HOLE LAT. = 32.2676739°N LONG. = 103.5752314°W</p> <p>NMSP EAST (FT) N = 461940.45 E = 775657.72</p>		<p>NE CORNER SEC. 33 LAT. = 32.2685723°N LONG. = 103.5688255°W</p> <p>NMSP EAST (FT) N = 462281.34 E = 777635.45</p>	
<p>500°25'24"E 2649.95 FT</p> <p>W Q CORNER SEC. 33 LAT. = 32.2613069°N LONG. = 103.5858818°W</p> <p>NMSP EAST (FT) N = 459601.07 E = 772381.86</p>		<p>NOTE: LATITUDE AND LONGITUDE COORDINATES ARE SHOWN USING THE NORTH AMERICAN DATUM OF 1983 (NAD83). LISTED NEW MEXICO STATE PLANE EAST COORDINATES ARE GRID (NAD83). BASIS OF BEARING AND DISTANCES USED ARE NEW MEXICO STATE PLANE EAST COORDINATES MODIFIED TO THE SURFACE.</p>		<p>500°27'25"W 2646.07 FT</p> <p>E Q CORNER SEC. 33 LAT. = 32.2613005°N LONG. = 103.5688182°W</p> <p>NMSP EAST (FT) N = 459635.90 E = 777656.55</p>		<p>500°25'23"E 2641.33 FT</p> <p>SW CORNER SEC. 33 LAT. = 32.2540480°N LONG. = 103.5858786°W</p> <p>NMSP EAST (FT) N = 456960.29 E = 772401.24</p>	
<p>500°25'23"E 2641.33 FT</p> <p>THISTLE UNIT #46H ELEV. = 3659.5' LAT. = 32.2550022°N (NAD83) LONG. = 103.5791520°W</p> <p>NMSP EAST (FT) N = 457321.98 E = 774478.27</p>		<p>500°27'25"W 2646.07 FT</p> <p>S Q CORNER SEC. 33 LAT. = 32.2540382°N LONG. = 103.5773543°W</p> <p>NMSP EAST (FT) N = 456975.20 E = 775036.60</p>		<p>500°25'02"W 2644.02 FT</p> <p>SE CORNER SEC. 33 LAT. = 32.2540342°N LONG. = 103.5688172°W</p> <p>NMSP EAST (FT) N = 456992.43 E = 777675.69</p>		<p>500°25'23"E 2641.33 FT</p> <p>SURFACE LOCATION 2080'</p> <p>550'</p> <p>589°40'47"E 2635.87 FT</p> <p>589°37'20"E 2639.76 FT</p>	

¹⁷ OPERATOR CERTIFICATION

I hereby certify that the information contained herein is true and complete to the best of my knowledge and belief, and that this organization either owns a working interest or unleased mineral interest in the land including the proposed bottom hole location or has a right to drill this well at this location pursuant to a contract with an owner of such a mineral or working interest, or to a voluntary pooling agreement or a compulsory pooling order previously entered by the court.

Signature: David H. Cook Date: 7/11/2013

Printed Name: David H. Cook Regulatory Specialist

E-mail Address: david.cook@dv.com

¹⁸ SURVEYOR CERTIFICATION

I hereby certify that the well location shown on this plat was plotted from field notes of actual surveys made by me or under my supervision, and that the same is true and correct to the best of my belief.

JULY 11, 2013

Date of Survey: JUL 11, 2013

Signature: [Signature] Professional Surveyor

Certificate Number: 12797

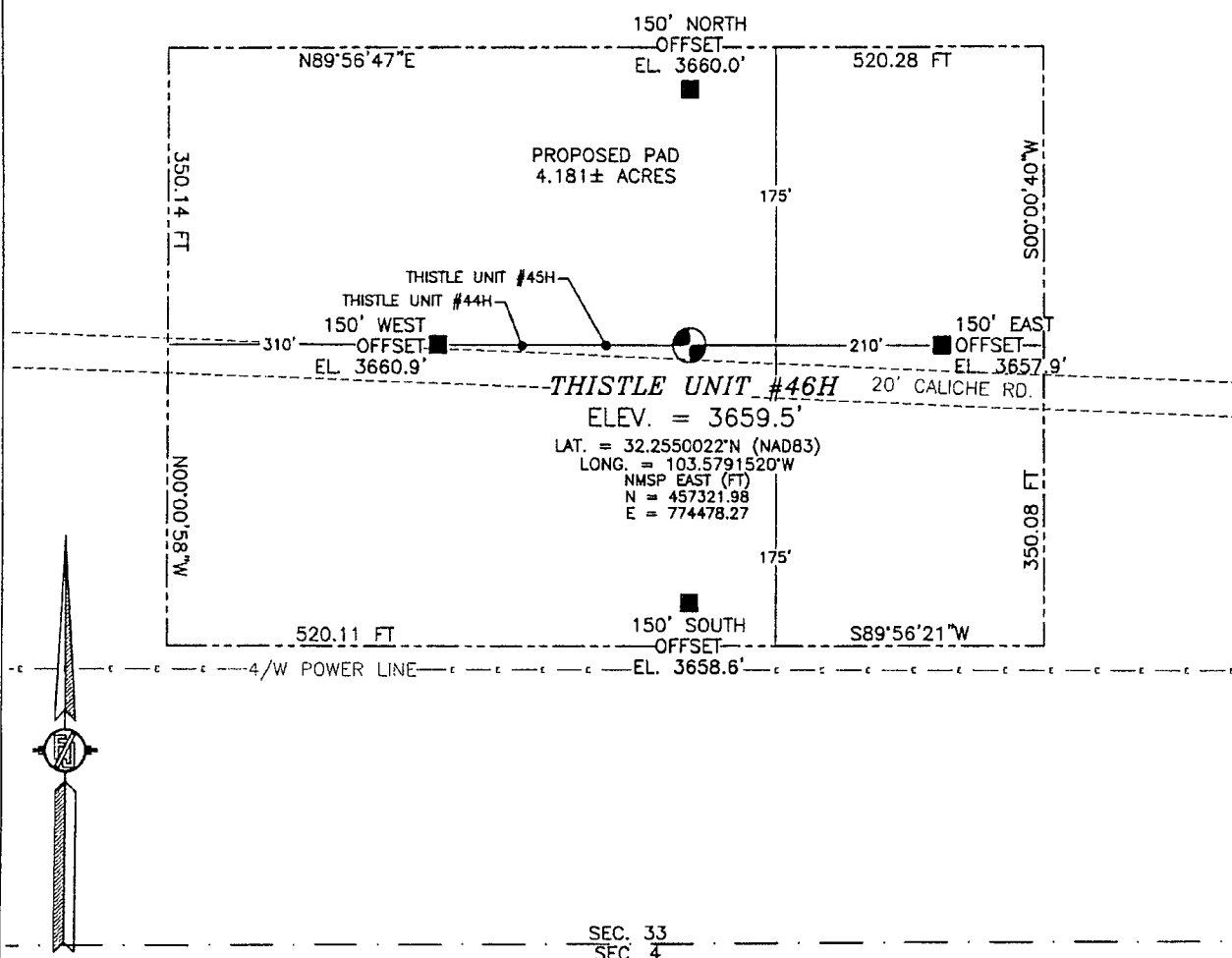
SURVEY NO. 1529E

* Amended

JUL 15 2013

SECTION 33, TOWNSHIP 23 SOUTH, RANGE 33 EAST, N.M.P.M.
LEA COUNTY, STATE OF NEW MEXICO
SITE MAP

NOTE: LATITUDE AND LONGITUDE COORDINATES ARE SHOWN USING THE NORTH AMERICAN DATUM OF 1983 (NAD83). LISTED NEW MEXICO STATE PLANE EAST COORDINATES ARE GRID (NAD83). BASIS OF BEARING AND DISTANCES USED ARE NEW MEXICO STATE PLANE EAST COORDINATES MODIFIED TO THE SURFACE.



010 50 100 200

SCALE 1" = 100'

DIRECTIONS TO LOCATION

FROM STATE HWY 128 AND CALICHE CR. J2 (BRINNINSTOOL) GO NORTH ON CR. J2 3.0 MILES, TURN LEFT AND GO WEST 0.23 MILES, TURN RIGHT AND GO NORTH 258', TURN LEFT AND GO WEST 0.31 MILES AND LOCATION IS ON THE RIGHT (NORTH) 15'.

DEVON ENERGY PRODUCTION COMPANY, L.P.

THISTLE UNIT #46H

LOCATED 350 FT. FROM THE SOUTH LINE
AND 2080 FT. FROM THE WEST LINE OF
SECTION 33, TOWNSHIP 23 SOUTH,
RANGE 33 EAST, N.M.P.M.
LEA COUNTY, STATE OF NEW MEXICO

JULY 11, 2013

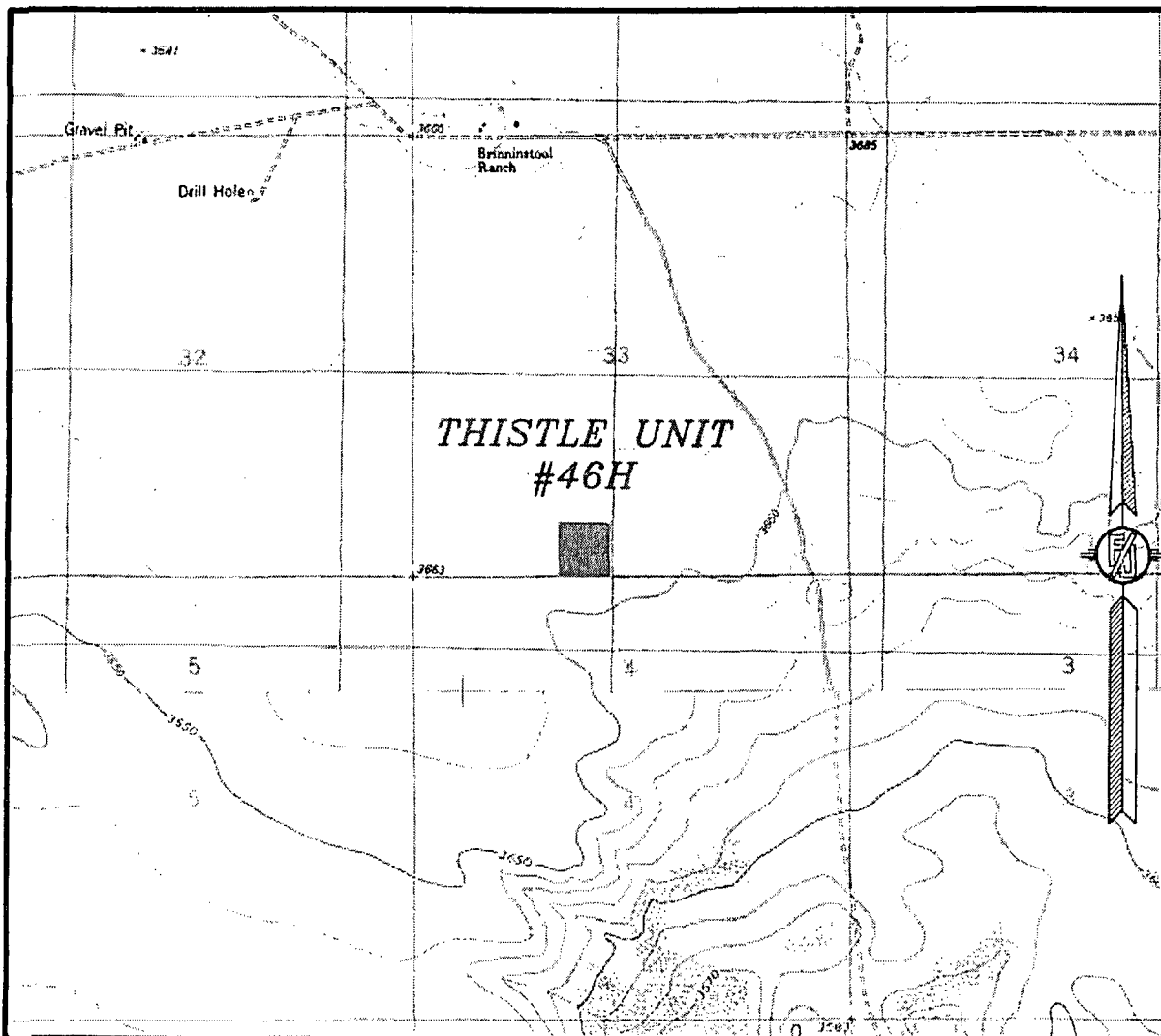
SURVEY NO. 1529E

MADRON SURVEYING, INC.

301 SOUTH CANAL
(575) 234-3341

CARLSBAD, NEW MEXICO

SECTION 33, TOWNSHIP 23 SOUTH, RANGE 33 EAST, N.M.P.M.
LEA COUNTY, STATE OF NEW MEXICO
LOCATION VERIFICATION MAP



USGS QUAD MAP:
TIP TOP WELLS

NOT TO SCALE

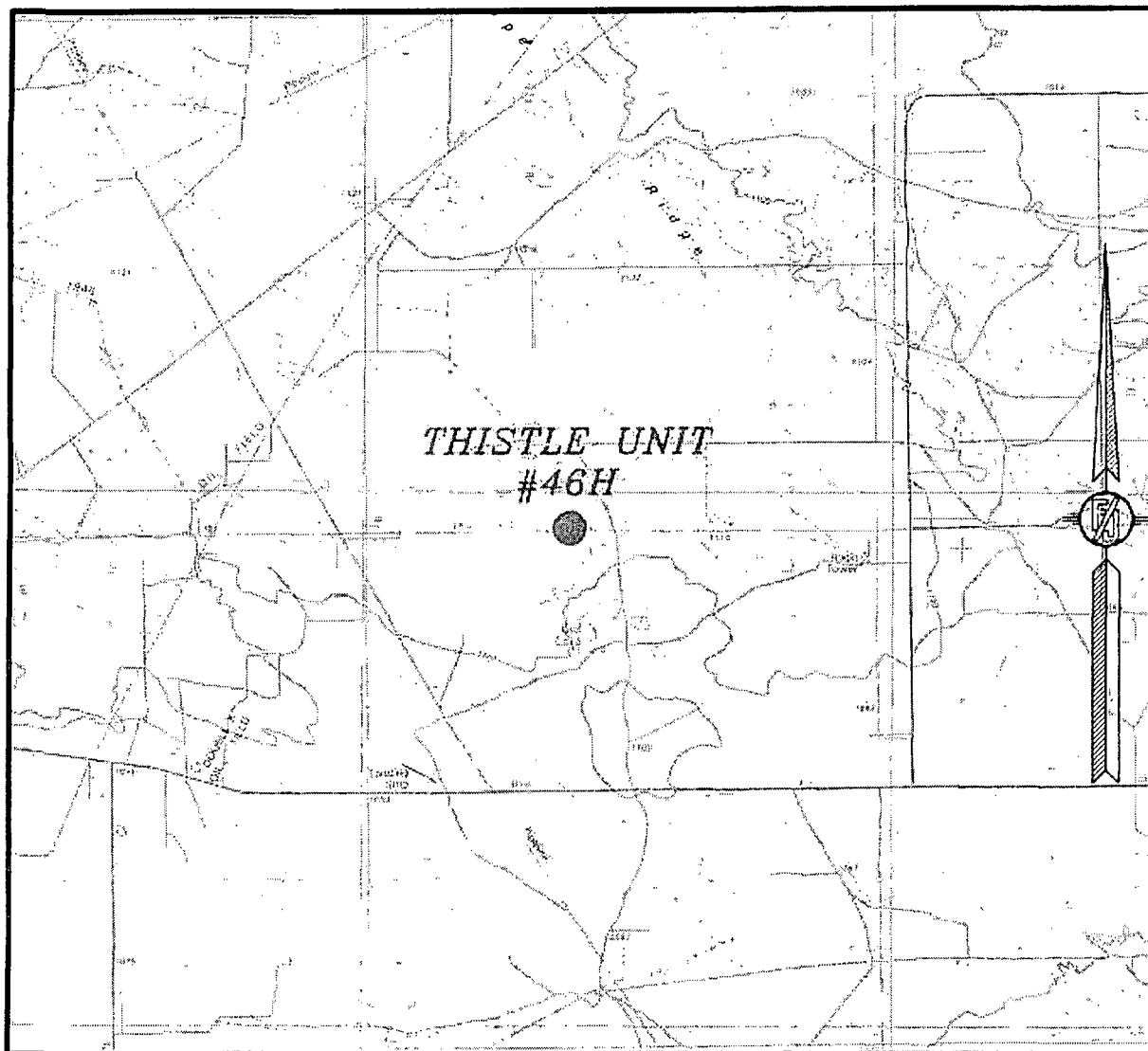
DEVON ENERGY PRODUCTION COMPANY, L.P.
THISTLE UNIT #46H

LOCATED 350 FT. FROM THE SOUTH LINE
AND 2080 FT. FROM THE WEST LINE OF
SECTION 33, TOWNSHIP 23 SOUTH,
RANGE 33 EAST, N.M.P.M.
LEA COUNTY, STATE OF NEW MEXICO

JULY 11, 2013

MADRON SURVEYING, INC. 301 SOUTH CANAL (575) 234-3341 CARLSBAD, NEW MEXICO SURVEY NO. 1529E

SECTION 33, TOWNSHIP 23 SOUTH, RANGE 33 EAST, N.M.P.M.
LEA COUNTY, STATE OF NEW MEXICO
VICINITY MAP



NOT TO SCALE

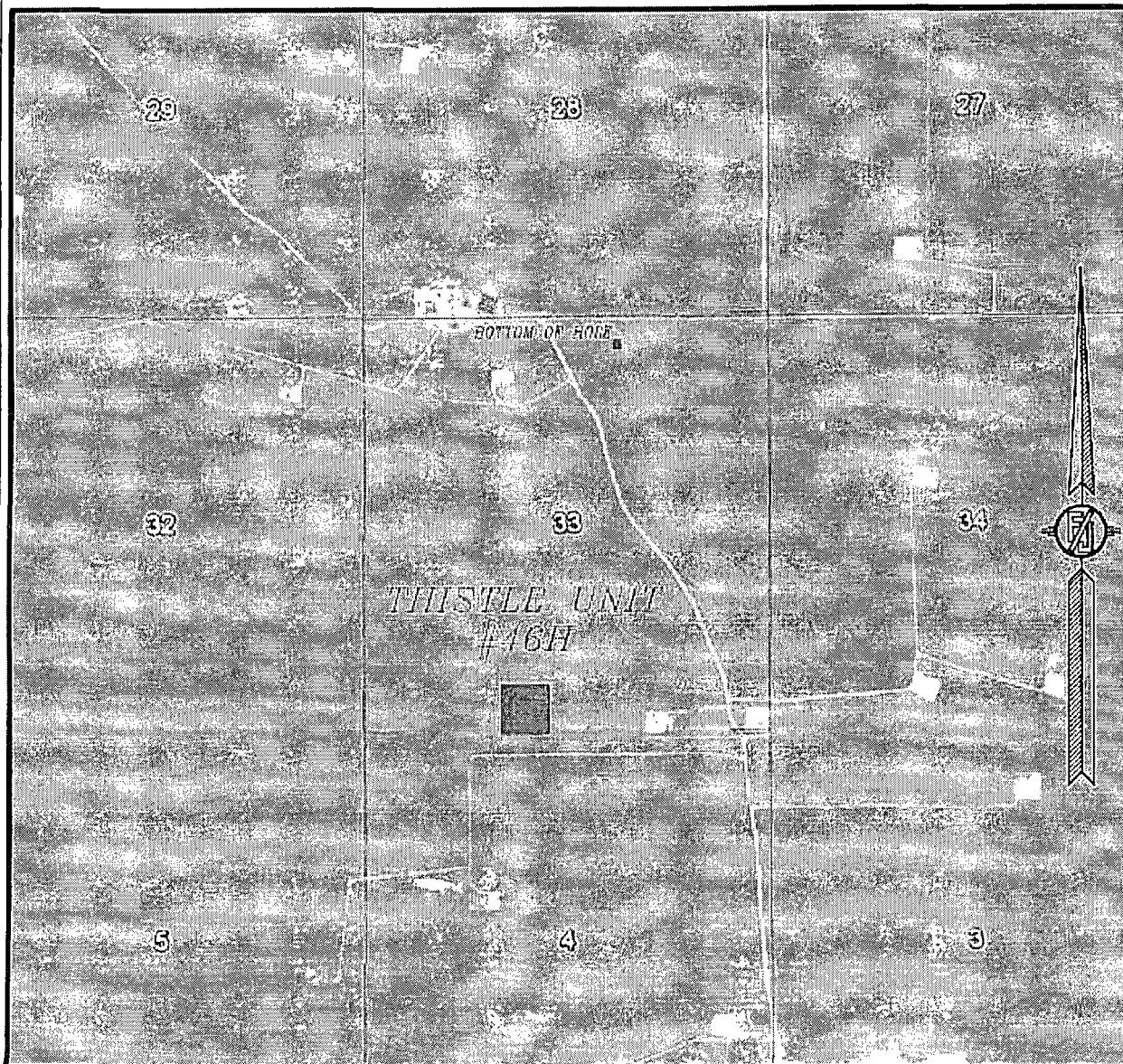
DEVON ENERGY PRODUCTION COMPANY, L.P.
THISTLE UNIT #46H

LOCATED 350 FT. FROM THE SOUTH LINE
AND 2080 FT. FROM THE WEST LINE OF
SECTION 33, TOWNSHIP 23 SOUTH,
RANGE 33 EAST, N.M.P.M.
LEA COUNTY, STATE OF NEW MEXICO

JULY 11, 2013

MADRON SURVEYING, INC. 301 SOUTH CANAL (575) 234-3341 CARLSBAD, NEW MEXICO
SURVEY NO. 1529E

SECTION 33, TOWNSHIP 23 SOUTH, RANGE 33 EAST, N.M.P.M.
LEA COUNTY, STATE OF NEW MEXICO
AERIAL PHOTO



NOT TO SCALE
AERIAL PHOTO:
GOOGLE EARTH
MARCH 2012

DEVON ENERGY PRODUCTION COMPANY, L.P.
THISTLE UNIT #46H

LOCATED 350 FT. FROM THE SOUTH LINE
AND 2080 FT. FROM THE WEST LINE OF
SECTION 33, TOWNSHIP 23 SOUTH,
RANGE 33 EAST, N.M.P.M.
LEA COUNTY, STATE OF NEW MEXICO

JULY 11, 2013

SURVEY NO. 1529E

MADRON SURVEYING, INC. 301 SOUTH CANAL (575) 234-3341 CARLSBAD, NEW MEXICO