

NEW MEXICO OIL CONSERVATION DIVISION
SOUTHEAST NEW MEXICO PACKER LEAKAGE TEST

Revised 11/23/11

Operator Chesapeake Energy Well API # 3002537351
Location Of Well: Unit A Section 14 Township T20S Range R35E County Lea
Well Name & No. Neuhaus 14 Federal #5

| | Name of Reservoir or Pool | Type of Prod. (Oil or Gas) | Method of Prod. (Flow Art. Lift) | Prod. Medium (Tbg. Or Cag.) | Choke Size |
|------------------|---------------------------|----------------------------|----------------------------------|-----------------------------|------------|
| Upper Completion | Bone Springs | Oil | Pumping | CSG | |
| Lower Completion | Morrow | Gas | Flow | TBG | 31/34 |

FLOW TEST NO. 1

Both zones shut-in at (hour, date): 04/15/2013 10:25 am

| | Upper Completion | Lower Completion |
|--|---|------------------|
| Well opened at (hour, date): <u>04/16/2013 10:30 am</u> | | |
| Indicate by (X) the zone producing..... | XXX | |
| Pressure at beginning of test..... | 390# | 1180# |
| Stabilized? (Yes or No)..... | Yes | Yes |
| Maximum pressure during test..... | 390# | 1200# |
| Minimum pressure during test..... | 35# | 1180# |
| Pressure at conclusion of test..... | 35# | 1200# |
| Pressure change during test (Maximum minus Minimum)..... | 355# | 20# |
| Was pressure change an increase or a decrease?..... | Decrease | Increase |
| Well closed at (hour, date): <u>04/17/2013 10:25 am</u> | Total Time On Production <u>23 hours 55 minutes</u> | |
| Oil Production During Test: <u>6</u> bbls; Grav. <u>39</u> | Gas Production During Test <u>2.7</u> MCF; GOR | |
| Remarks: | | |

FLOW TEST NO. 2

Both zones shut-in at (hour, date): 04/17/2013 10:25 am

| | Upper Completion | Lower Completion |
|--|---|------------------|
| Well opened at (hour, date): <u>04/18/2013 1:15 pm</u> | | |
| Indicate by (X) the zone producing..... | | XXX |
| Pressure at beginning of test..... | 20# | 1270# |
| Stabilized? (Yes or No)..... | Yes | Yes |
| Maximum pressure during test..... | 30# | 1270# |
| Minimum pressure during test..... | 10# | 1040# |
| Pressure at conclusion of test..... | 20# | 1260# |
| Pressure change during test (Maximum minus Minimum)..... | 10# | 230# |
| Was pressure change an increase or a decrease?..... | Decrease | Decrease |
| Well closed at (hour, date): <u>04/19/2013 10:36 am</u> | Total Time On Production <u>21 hours 21 minutes</u> | |
| Oil Production During Test: <u>5</u> bbls; Grav. <u>58</u> | Gas Production During Test <u>16.6</u> MCF; GOR | |
| Remarks: | | |

I hereby certify that the information herein contained is true and complete to the best of my knowledge.

Approved 7.31 2013
New Mexico Oil Conservation Division

By [Signature]
Title Dist Mgr

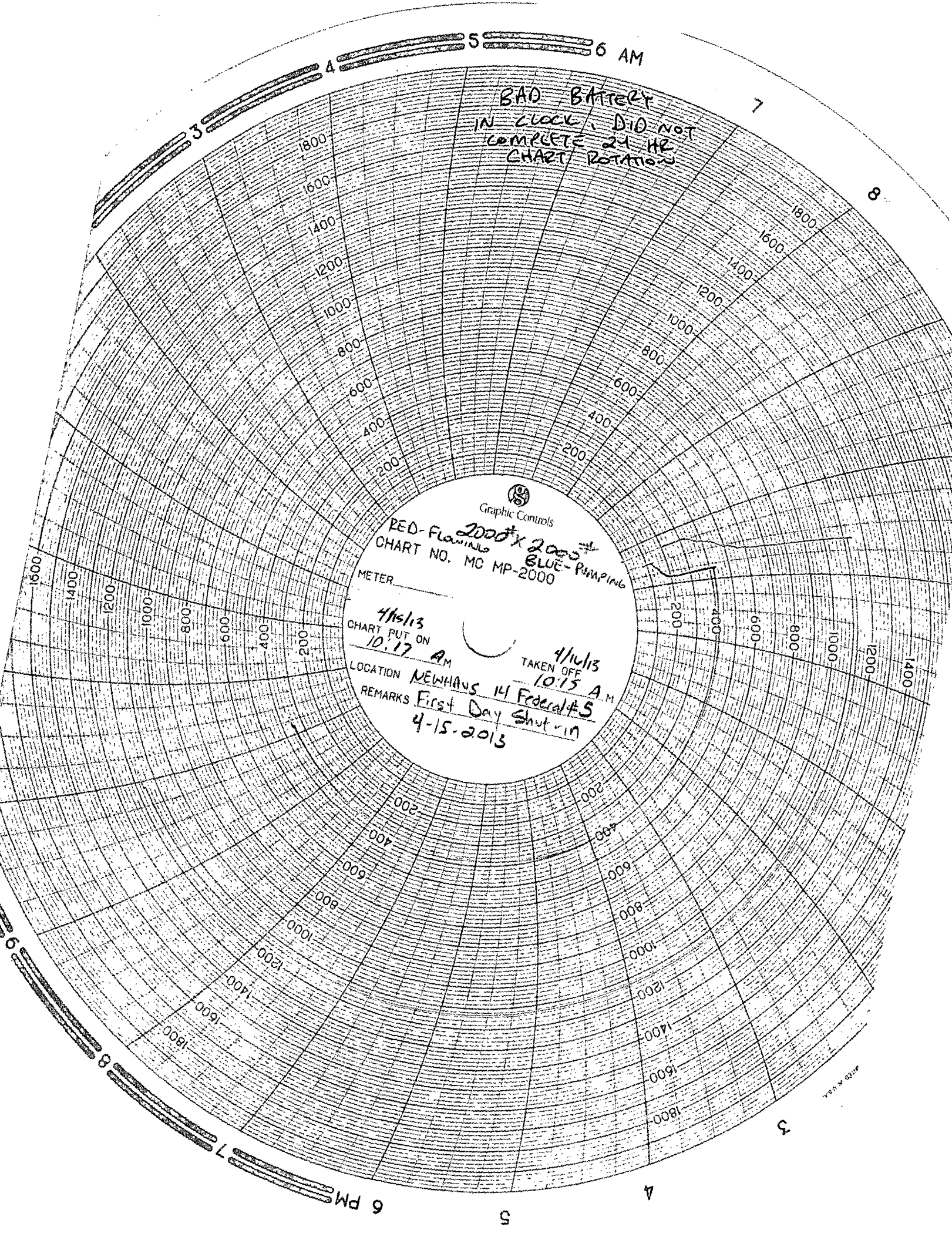
Operator Wildcat Measurement Service

By [Signature]
Title Mike Dunn/Technician

E-mail Address mdunn@wildcatms.com

Date 05/07/2013

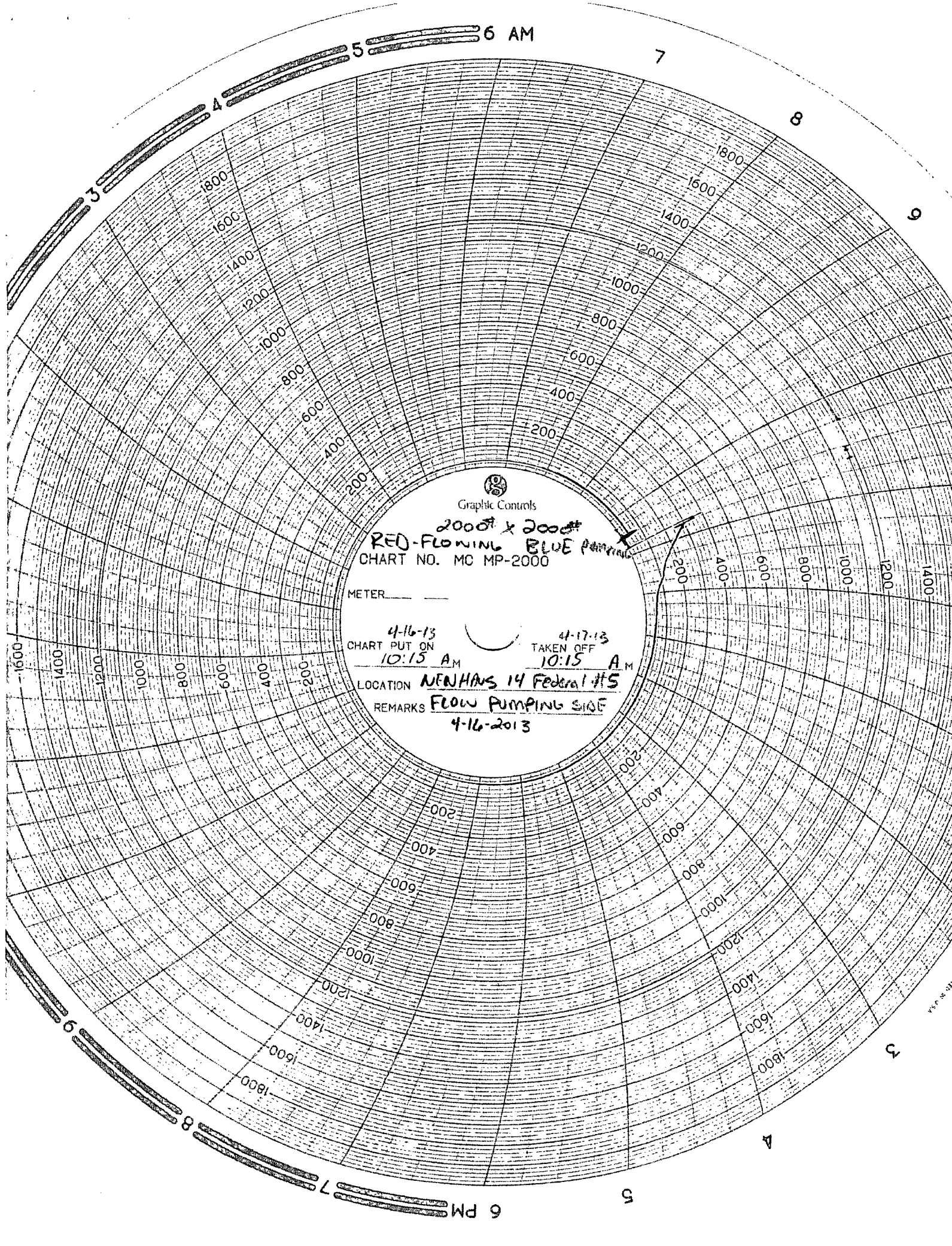
AUG 01 2013



BAD BATTERY
IN CLOCK. DID NOT
COMPLETE 24 HR
CHART ROTATION

Graphic Controls
RED-Flowing 2000* 2000*
CHART NO. MC MP-2000
METER
4/15/13
CHART PUT ON 10:17 AM
LOCATION NEWHAUS 14 Federal #5
REMARKS First Day Shut-in
4-15-2013
4/16/13
TAKEN OFF 10:15 AM

MADE IN U.S.A.



Graphic Controls

2000' x 2000'
RED-FLOWING BLUE PUMPING
CHART NO. MC MP-2000

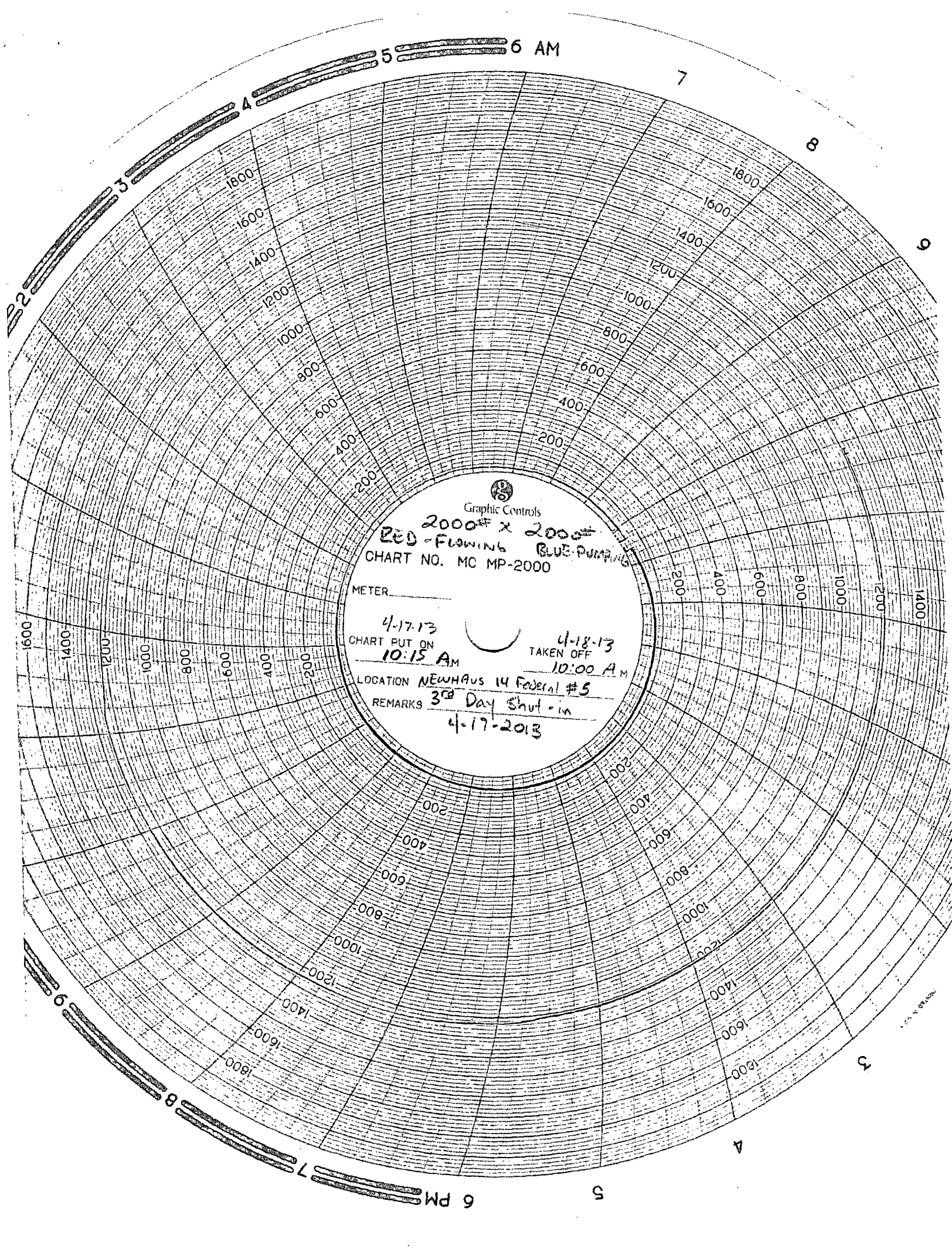
METER _____

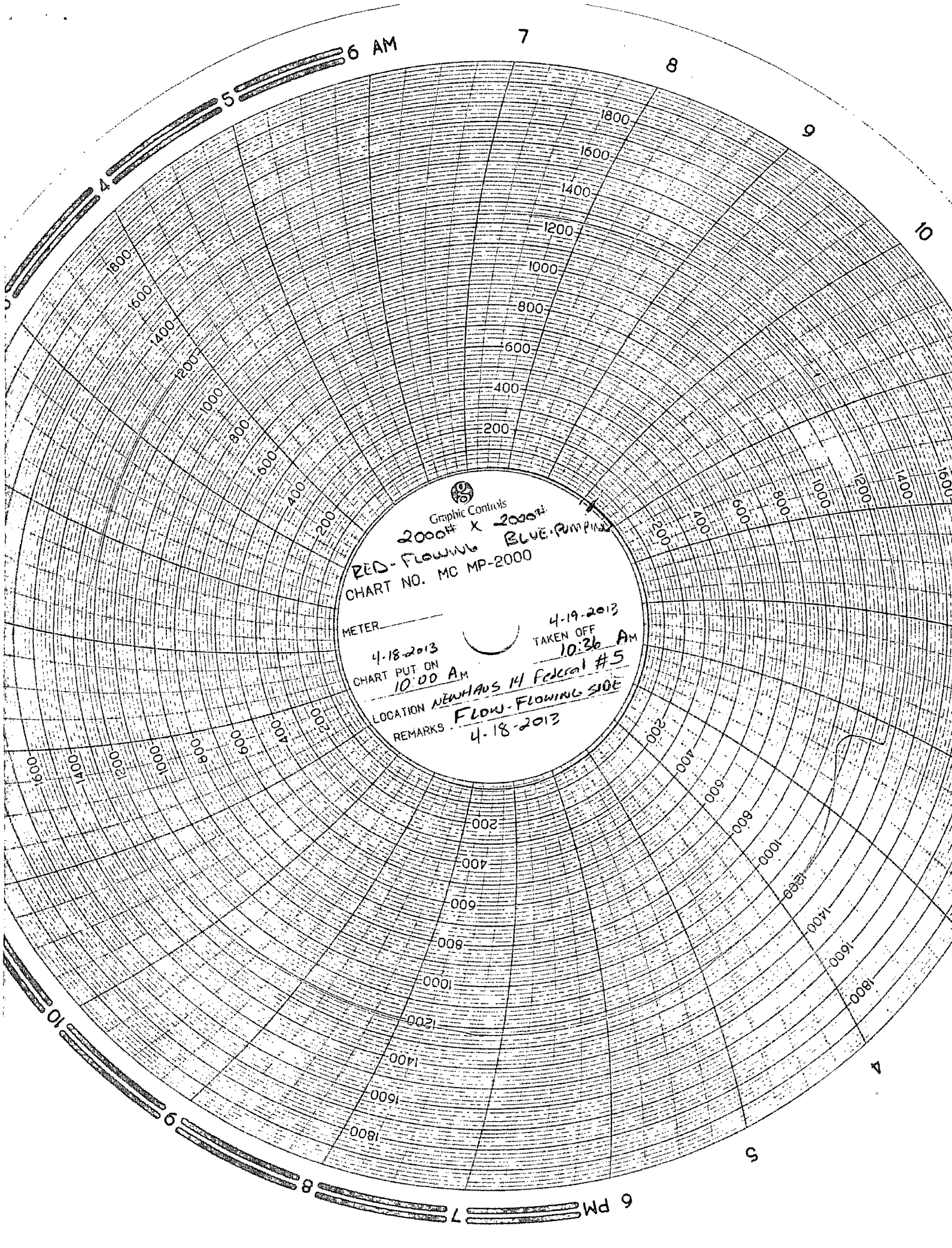
4-16-13
CHART PUT ON
10:15 A.M.

4-17-13
TAKEN OFF
10:15 A.M.

LOCATION NENHANS 14 Federal #15

REMARKS FLOW PUMPING SIDE
4-16-2013





Graphic Controls

2000# X 2000#
RED-Flowing BLUE-Flowing
CHART NO. MC MP-2000

METER

4-18-2013
CHART PUT ON
10:00 AM

4-19-2013
TAKEN OFF
10:36 AM

LOCATION NEWHAUS H Federal #5
REMARKS Flow-Flowing side
4-18-2013