

240
93-0720
HOBBBS OCD
Encl
48-9720
7410
34-6170
JUL 31 2013
AI 87505
76-3462
RECEIVED

Form C-102
Revised August 1, 2011
Submit one copy to appropriate
District Office
☒ AMENDED REPORT

¹⁰ Surface Location

¹ API Number 30-025-41307	² Pool Code 97964	WC-025 G-7524-7735C; Lower Johnson Ranch West Bone Springs	
³ Property Code 99911	⁵ Property Name BELL LAKE "24" FED		⁶ Well Number 3H
⁷ OGRID No. 6137	⁸ Operator Name DEVON ENERGY PRODUCTION COMPANY, L.P.		⁹ Elevation 3554.7

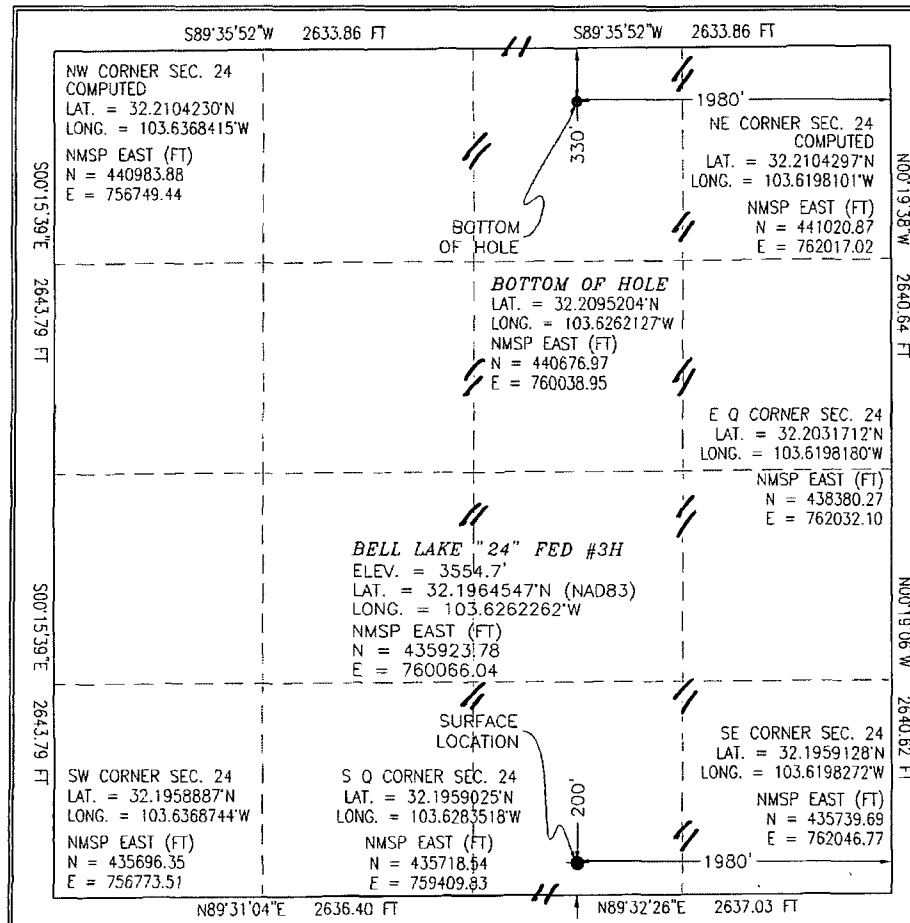
UL or lot no.	Section	Township	Range	Lot Idn	Feet from the	North/South line	Feet from the	East/West line	County
O	24	24 S	32 E		200	SOUTH	1980	EAST	LEA

" Bottom Hole Location If Different From Surface

UL or lot no.	Section	Township	Range	Lot Idn	Feet from the	North/South line	Feet from the	East/West line	County
B	24	24 S	32 E		330	NORTH	1980	EAST	LEA

¹² Dedicated Acres 160	¹³ Joint or Infill	¹⁴ Consolidation Code	¹⁵ Order No.
--------------------------------------	-------------------------------	----------------------------------	-------------------------

No allowable will be assigned to this completion until all interests have been consolidated or a non-standard unit has been approved by the division.



17 OPERATOR CERTIFICATION

I hereby certify that the information contained herein is true and complete to the best of my knowledge and belief, and that this organization either owns a working interest or unleased mineral interest in the land including the proposed bottom hole location or has a right to drill this well at this location pursuant to a contract with an owner of such a mineral or working interest, or to a voluntary pooling agreement or a compulsory pooling order, heretofore entered by the division.

Signature 1) - U Date 6/13/2013

David H. Cook Regulatory Specialist

Printed Name _____

david.cook@dvn.com

E-mail Address

18 SURVEYOR CERTIFICATION

I hereby certify that the well location shown on this plat was plotted from field notes of actual surveys made by me or under my supervision, and that the same is true and correct to the best of my belief.

DECEMBER

Date of Survey _____

Signature and Seal of Professional Surveyor

Certificate Number: **FILMON P. PARAMILLO, PLS 12797**

SURVEY NO. 1412

AUG 06 2013

