

Submit 1 Copy To Appropriate District Office
District I - (575) 393-6161
1625 N. French Dr., Hobbs, NM 88240
District II - (575) 748-1283
811 S. First St., Artesia, NM 88210
District III - (505) 334-6178
1000 Rio Brazos Rd., Aztec, NM 87410
District IV - (505) 476-3460
1220 S. St. Francis Dr., Santa Fe, NM 87505

State of New Mexico
Energy, Minerals and Natural Resources

Form C-103
Revised July 18, 2013

HOBBS OGD

OIL CONSERVATION DIVISION

AUG 13 2013

220 South St. Francis Dr.
Santa Fe, NM 87505

WELL API NO. 30-025-31488
5. Indicate Type of Lease STATE <input checked="" type="checkbox"/> FEE <input type="checkbox"/>
6. State Oil & Gas Lease No.
7. Lease Name or Unit Agreement Name WEST DOLLARHIDE DRINKARD UNIT
8. Well Number 121
9. OGRID Number 4323
10. Pool name or Wildcat DOLLARHIDE; DRINKARD

SUNDRY NOTICES AND REPORTS ON WELLS
(DO NOT USE THIS FORM FOR PROPOSALS TO DRILL OR TO DEEPEN OR PLUG BACK TO A DIFFERENT RESERVOIR. USE "APPLICATION FOR PERMIT" (FORM C-101) FOR SUCH PROPOSALS.)

1. Type of Well: Oil Well <input checked="" type="checkbox"/> Gas Well <input type="checkbox"/> Other <input type="checkbox"/>
2. Name of Operator CHEVRON U.S.A. INC.
3. Address of Operator 15 SMITH ROAD, MIDLAND, TEXAS 79705
4. Well Location Unit Letter: E 2176 feet from the NORTH line and 656 feet from the WEST line Section 32 Township 24S Range 38E NMPM County LEA

11. Elevation (Show whether DR, RKB, RT, GR, etc.)

12. Check Appropriate Box to Indicate Nature of Notice, Report or Other Data

NOTICE OF INTENTION TO:

PERFORM REMEDIAL WORK ☐ PLUG AND ABANDON ☐
TEMPORARILY ABANDON ☐ CHANGE PLANS ☐
PULL OR ALTER CASING ☐ MULTIPLE COMPL ☐
DOWNHOLE COMMINGLE ☐
CLOSED-LOOP SYSTEM ☐
OTHER: ☐

SUBSEQUENT REPORT OF:

REMEDIAL WORK ☐ ALTERING CASING ☐
COMMENCE DRILLING OPNS. ☐ P AND A ☐
CASING/CEMENT JOB ☐

OTHER: CLEAN OUT, ACIDIZE, SAND FRAC

13. Describe proposed or completed operations. (Clearly state all pertinent details, and give pertinent dates, including estimated date of starting any proposed work). SEE RULE 19.15.7.14 NMAC. For Multiple Completions: Attach wellbore diagram of proposed completion or recompletion.

PLEASE FIND ATTACHED, REPORTS FOR WORK DONE FROM 07/08/2013 THROUGH 07/23/2013.

.ALSO ATTACHED, IS THE CHART WHICH WAS RUN ON 07/23/2013.

WFX-63D
Spud Date:

Rig Release Date:

Approved by: R
Pressure Increase 9/1/94
1701 psig
QAB
8/23/13

I hereby certify that the information above is true and complete to the best of my knowledge and belief.

SIGNATURE Denise Pinkerton TITLE REGULATORY SPECIALIST

DATE 08/09/2013

Type or print name: DENISE PINKERTON

E-mail address: leakejd@chevron.com

PHONE: 432-687-7375

For State Use Only

APPROVED BY: [Signature] TITLE Dist. Mgr

DATE 8-22-2013

Conditions of Approval (if any):

AUG 26 2013

Before

West Dollarhide Drinkard # 121

Location
2176' FNL & 656' FWL
Section: 32
Township: 24S
Range: 38E Unit: E
County: Lea State: NM

Well ID Info
Chevno: QU2184
API No: 30-025-31488
Compl. Date: 7/27/93

Elevations
GL: 3150'
KB: 3163'
DF:

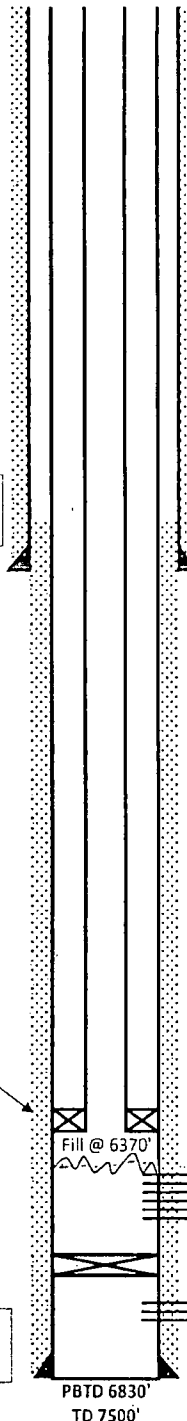
11-3/4" 42# csg set @ 1200' w/ 700 sx class 'C' cmt; TOC @ surf

Tubing Detail

194' 2-3/8" Poly Lined Tbg (6393')
1 O/O Tool w/ 1.25" F-Profile (.50')
1 Loc/Set Nickle Plater W/W Pkr (3/5')
KB +13'
FHD @ 6379'

Pkr set at 6379'

5-1/2" 15.5 & 17# WC-50 & L-80 set @ 7500' w/ 2500 sx cmt; TOC @ 1100 by TS



Initial Completion

Perf ABO 6894-7338' Acdz w/ 6000 gal HCl Trace oil. Set CIBP @ 6850'. Perf DRKD 6465-6574' Acdz w/ 5000 gal 15% HCl

Subsequent Workovers

01/1994 Acdz DRKD w/ 5000 gal 15% & 2250# GRS
 05/1999 C/O fill // 6452-6820' Rec'd formation & hard drlg. 6495-6525' possible bad casing. Re-perf DRKF 6441-6461' Acdz w/ 6500 gal 15% & 3000# GRS RTI
 07/2012 TD Check tagged fill @ 6370'

Proposed Perfs:

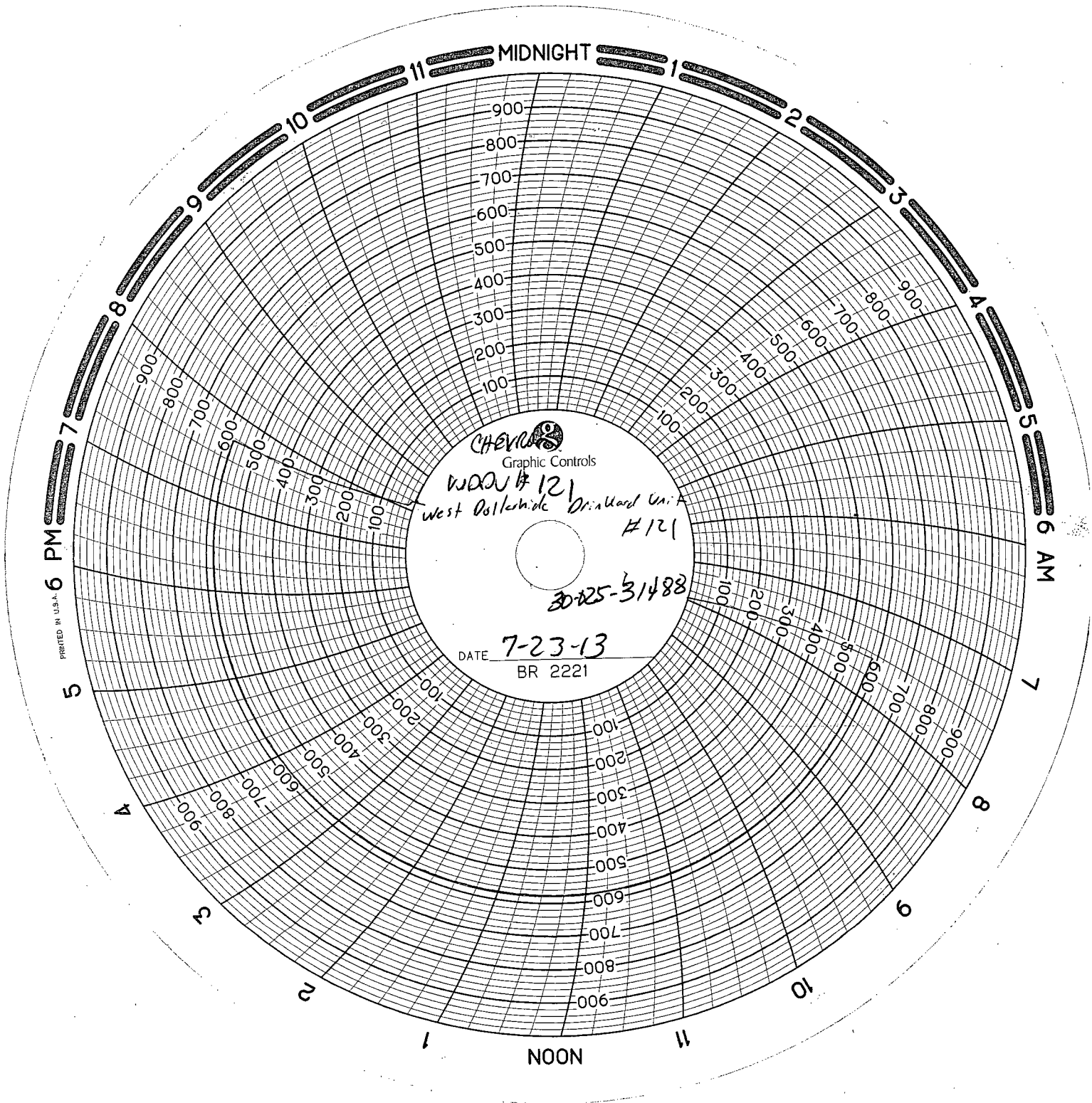
Drinkard: 6493-6505 (12'), 6516-34' (18')
 Abo: 6649-70' (21'), 6675-84' (9'), 6721-33' (12'), 6737-65' (28')

Re-Perf (05/99): 6441-6461' w/ 2 JSPF
 Drinkard: 6465-6574' w/ 4 JSPF (260 holes)
 Bad Csg @ 6495-6525'

CIBP @ 6850' w/ 20' cmt on top
 Abo: 6894-7338' w/ 2 JSPF (144 holes)

PBTD 6830'
 TD 7500'

Updated: 12/13/2012
 by jxxf



Graphic Controls

WDOU #121

West Dollywood Dr. Alford Unit

#121

30-25-31488

DATE 7-23-13

BR 2221

PRINTED IN U.S.A.

Inf A

E-32 245 38E

2176 N 656 W

C/O + A/ Sandgrac

Chemical Service
Robert D. White



Summary Report

Major Rig Work Over (MRWO)
Stimulation
Job Start Date: 7/8/2013
Job End Date: 7/23/2013

Well Name WEST DOLLARHIDE DRINKARD UNIT 121	Lease West Dollarhide Drinkard Unit	Field Name Dollarhide - Primary	Business Unit Mid-Continent
Ground Elevation (ft)	Original RKB (ft)	Current RKB Elevation	Mud Line Elevation (ft) Water Depth (ft)

Report Start Date: 7/8/2013

Crew travel

SM: tenet, HazID, E-Colors, SWA, Variance, operations plan, JSA's for RU and flow back.

Spot unit. RU. After RU the reverse unit lines were laid. Casing and tubing both are dead. Tbg pressure gauge was stuck on 300 psi. Set KeyView.

Wait on BOPE.

Attempt to ND B-1 adapter. Bolts frozen

Noon meal while waiting on welder.

SM: Hot work permit writing. Fire watch assigned and duties explained.

Cut off bolts and remove B-1 adapter.

NU BOPE

Test casing, injection packer and 2 3/8" pipe rams to 250 psi low and 625 psi high. Held high test for 30 minutes.

Spot WL trucks while NU pollution pan.

JSA/Safety meeting

RU lubricator. 1st WL run: 1.44" GR. Tag at 841', 1435', and tagged solid at 2688'. Unable to get past 2688' - tagged solid 3 times.

RD lubricator. Close well-in and secure. Change clothes.

Crew travel

Report Start Date: 7/9/2013

Crew Travel

Safety Meeting

Release Loc-Set pkr

TP - 0 psi

CP - 900psi after releasing packer indicating that the tubing is plugged.

Flow up backside to tank

Flowed ~300 bbls of pkr fluid @ 9.5 PPG

We tried to bullhead brine after flowing back 50 bbls with no luck. Well was pressured up to 1100 psi after 10 bbls.

Final SICP was 600 psi after flowing 300 bbls

Set Loc-Set pkr & released on/off tool. Pulled up 3 ft & prep to circulate

C&C hole w/ brine.

Latch onto on/off tool, SI & Secure well SDFN

Crew Travel

Report Start Date: 7/10/2013

Crew Travel

Safety Meeting

Wait on wireline

RU-Apollo

RIH w/ 1.44" Collar locator and weight bar.

Tight-spots @ 840', 1430', 2675', & 4769'

PU perf gun & shoot 4 holes @ 4750'

RD Apollo

Reverse circulate 90 bbls 14.5 ppg mud.

Release pkr

Tubing was static

Casing was on a slight vacuum

Flow check for 15 mins with no flow

POOH & LD 15 jts of 2 3/8" poly lined injection tubing (Pulled Dry)

SI & Secure well SDFN

Crew Travel

Report Start Date: 7/11/2013

Crew Travel



Summary Report

Major Rig Work Over (MRWO)
Stimulation
Job Start Date: 7/8/2013
Job End Date: 7/23/2013

Well Name WEST DOLLARHIDE DRINKARD UNIT 121	Lease West Dollarhide Drinkard Unit	Field Name Dollarhide --Primary	Business Unit Mid-Continent
Ground Elevation (ft)	Original RKB (ft)	Current RKB Elevation	Mud Line Elevation (ft) Water Depth (ft)

Safety Meeting
TP - 0 psi CP - 0 psi Cont TOH laying down 178 jts of 2 3/8 poly lined injection tubing, Loc-Set packer, & fish.
Slickline tools were stuck in packer with knuckle jt below the bottom of the packer
Change pipe rams to 2 7/8" & finish tallying out.
Test BOP
300 psi low/1000 psi high
Lunch
PU 4 3/4 MTB, bit sub, & TIH w/ chevron owned 2 7/8" WS & tag fill @ 6420'
LD 1 jt, SI & Secure well, SDFN
PU Power Swivel
Crew Travel
Report Start Date: 7/12/2013
Crew Travel
Safety Meeting
PU PS, & tubing float
Circulate mud out
Recovered 65 bbls of 14.0 ppg mud & 15 bbls of >13.0 ppg
Clean out f/ 6420'-6826'
6499' - 6561' had metal, cement, and scale in cuttings but cleaned up and went back to just scale after 6561' and did not see any formation in cuttings.
Circulate well clean with brine.
Plugged up the valve in the wellhead twice with frac balls.
LD PS
LD 13 jts & prep to remove tubing float after killing well.
Pump 17 bbls down tubing (went on vac) Removed tubing float
Pump 46 bbls down csg.
Monitor Pressure
Decide to let wellbore stabilize overnight after bullheading mud
SI & Secure Well SDFN
Crew Travel
Report Start Date: 7/13/2013
Crew Travel
Safety Meeting
TP - 40 psi CP - 100 psi
Pump 5 bbls 13.9 mud down tubing & 15 bbls down casing. Well was dead
Pulled first 5 stands wet, pumped 5 more bbls mud down tubing and went on vacuum
POOH w/ 99 stds & 1 single of 2 7/8" WS.
MTB was plugged with frac balls
Apollo/TCP JSA meeting
RU Apollo
Test lubricator to 1000 psi
Leaking at flange, tightened & retested and passed.



Summary Report

Major Rig Work Over (MRWO)

Stimulation

Job Start Date: 7/8/2013

Job End Date: 7/23/2013

Well Name WEST DOLLARHIDE DRINKARD UNIT 121	Lease West Dollarhide Drinkard Unit	Field Name Dollarhide - Primary	Business Unit Mid-Continent
Ground Elevation (ft)	Original RKB (ft)	Current RKB Elevation	Mud Line Elevation (ft) Water Depth (ft)

Perf as follows

6737-65
6721-33
6675-84
6649-70
6516-34
6493-6505

Correlated to logs dated 07/1993

Well started flowing after shooting last zone, plan to kill well monday morning & shoot propellant guns

RD Apollo lubricator, NU B-1 flange on top of BOP over the weekend.

SI & Secure, SDFN

Crew Travel

Report Start Date: 7/15/2013

Crew Travel

Safety Meeting

CP - 200 psi before pumping anything

Pump 10 bbls brine water spacer

JSA review w/ Apollo & TCP

Flow back 55 bbls total

10 bbl brine spacer
45 bbls mud

Made 2 propellant gun runs
Successfully shot:
6737-57'
6649-69'

On the 3rd run we tagged something solid @ 6486' so we pulled back up in the lubricator

Flow the rest of the mud back (45 bbls)

Attempt the 3rd run again with the same result, Tagged solid @ 6486'
POOH & LD propellant guns.

RD Apollo & TCP

Bullhead 92 bbls of 14.5 ppg mud to kill well.

SI well overnight to allow wellbore to stabilize

SI & secure well, SDFN.

Crew Travel

Report Start Date: 7/16/2013

Crew Travel

Safety Meet

PU Tapered mill & 1st DC.

LD same

ND enviro pan

Wait on String Mill, Jars, & hydril

NU Annular & enviro pan

PU pkr, RIH ~25', set pkr, load casing, test annular.

Passed Test

Lunch

Wait on new XO.

(First one that was brought out was not the right threads)

Make up & tack weld string mill, XO, & muleshoe.



Summary Report

Major Rig Work Over (MRWO)
Stimulation
Job Start Date: 7/8/2013
Job End Date: 7/23/2013

Well Name WEST DOLLARHIDE DRINKARD UNIT 121	Lease West Dollarhide Drinkard, Unit	Field Name Dollarhide - Primary	Business Unit Mid-Continent
Ground Elevation (ft)	Original RKB (ft)	Current RKB Elevation	Mud Line Elevation (ft) Water Depth (ft)

Com
RIH w/ Muleshoe, XO, XO, String Mill, DC, Jars, 3 DC, & work string.
Tag @ 6498' - Set 5 pts on it & fell through without rotating or pumping
Tag again @ 6600' - set 14 pts on it & dragged 10 pts for ~5 ft coming out.
NU stripper & LD 5 jts.
SI & Secure Well, SDFN
Crew Travel
Report Start Date: 7/17/2013
Com
Crew Travel
Safety Meeting
Install float & TIH to ~6600'
PU PS
Circulate mud out, Recovered 60 bbls of 14.1 ppg mud.
CO F~-6600-6824'
Did not torque or tag anything noticable untill 6800'. @ 6800' we sat down on something and had to mill to 6824'. Had scale and some metal shavings in returns.
Circulate hole clean with brine.
LD 12 jts & LD PS
Lunch
Circulate 70 bbls 14.5 mud down casing
Bullhead 20 down tubing.
Monitor well
CP - 0 psi TP - 100 psi
Pump 10 more bbls of mud down tubing, SI well & monitor.
Casing was static, & Tubing was on vacuum.
POOH w/ WS, DC, Jars, string mill, & muleshoe.
Bottom of muleshoe was not damaged & mill had very little wear.
ND stripper rubber, NU B-1 Flange overnight.
SI & Secure well, SDFN.
Crew Travel
Report Start Date: 7/18/2013
Com
Crew Travel
Safety Meeting
RU Apollo, ND B-1, NU adapter flange, PU lubricator
JSA Review w/ Apollo & TCP
Test Lubricator
1500 psi - 1st test failed (Leaking @ flange)
Bled off pressure, tighten flange bolts, & retest (Passed)
Run 3rd propellant gun
Shoot 6516-36
Ran into something coming out of the hole @ 6489'; we went back down and eased trough it and it dragged, but it came out.
Wait on 15' perf gun



Summary Report

Major Rig Work Over (MRWO)
Stimulation
Job Start Date: 7/8/2013
Job End Date: 7/23/2013

Well Name WEST DOLLARHIDE DRINKARD UNIT 121	Lease West Dollarhide Drinkard Unit	Field Name Dollarhide - Primary	Business Unit Mid-Continent
Ground Elevation (ft)	Original RKB (ft)	Current RKB Elevation	Mud Line Elevation (ft) Water Depth (ft)

Perforate w/ 3 1/8 slick gun. 15' gun @ 4 SPF

6370-85

POOH & PU 4th propellant gun

Shoot

6372.5 - 82.5

POOH w/ no drag

RD Apollo

RIH w/ muleshoe, XO, 4 3/4 string mill, XO, XO, 2 DC, Jars, 2 DC, XO, 2 7/8 WS

TIH to 6393' & SI & Secure well, SDFN

Crew Travel

Report Start Date: 7/19/2013

Crew Travel

Safety Meeting

Cont RIH, & Tag PBTD @ 6824'

Went all the way to PBTD without tagging and without rotating or pumping

POOH w/ WS & LD DC, Jars, & string mill.

PU 2 3/8" AS1-X nickle plated OD PC ID injection packer, PC ID&OD pup jt & pump out plug set @ 1650 psi & RIH on WS w/ perforated seat nipple

Packer kept setting as we were running in the hole

LD inj packer

Frac Balls were stuck in the J-slot in the packer and preventing it from staying in the running position.

Lunch

Wait on new packer

RIH w/ 10 stds

Reverse circulate brine F/ 600'-Surface.

Recovered 2 frac balls

POOH w/ 10 stds

PU new Inj pkr w/ PC pup jt, & pump out plug

Packer set 2 times uphole, but we got it down.

Set Inj pkr & 6363'

Circulate out mud w/ 145 bbls of pkr fluid.

Recovered 40 bbls of >13.5 ppg mud, the rest was gas cut

Test casing & pkr for 15 mins @ 520 psi. Test was good.

LD Swivel & SI & Secure well, SDFN

Crew Travel

Report Start Date: 7/22/2013

Crew Travel

Safety Meeting

TP- 0 psi

CP - 0 psi

Open well to tank and monitor for 15 mins, no flow.

POOH laying down 2 7/8" work string

Change out pipe rams & everything on the floor to 2 3/8

Test BOP

200 low/1020 high (Passed)

RU Basin tubing testers

PU new on/off tool, & TIH w/ new 2 3/8" 4.7# J-55 TK-99 IPC tubing

199 jts & 2 subs



Summary Report

Major Rig Work Over (MRWO)
Stimulation
Job Start Date: 7/8/2013
Job End Date: 7/23/2013

Well Name WEST DOLLARHIDE DRINKARD UNIT 121	Lease West Dollarhide Drinkard, Unit	Field Name Dollarhide - Primary	Business Unit Mid-Continent
Ground Elevation (ft)	Original RKB (ft)	Current RKB Elevation	Mud Line Elevation (ft) Water Depth (ft)

RD Basin
Test casing & on/off tool to 560 psi @ 10 mins. Test was good.
SI & Secure well, SDFN
Crew Travel
Report Start Date: 7/23/2013
Crew travel to yard
JSA's and safety meeting. Discussed days operations consisting of nipping down BOP and rigging down pulling unit. Talked over cleaning up location and securing all tools and equipment for rig move.
Rigged up rig floor and prepped all tools to nipple down BOP. Nipped down 5K BOP annular and 5K BOP. Picked up all tools and loaded BOP on to trailer.
Nipped up B-1 adaptor wellhead and master valve. Secured bolts on well. Prepped to pump off Pump/Off plug and perform H-5 test with pump truck and chart reader.
Rigged down reverse unit hoses and secured on to reverse pump. Disconnected all hoses to tanks and prepped for all tanks and reverse equipment to be moved to new location.
Waited on Pump truck to show up to location
Rigged up pump truck. Made up hoses to tbg and pumped Pump/Off plug. Plug was pumped off @ 3000 psi. Disconnected hoses and hook up hose to CSG for H-5 test. Pressured up to 580 psi. Pressure held and test was good. Release pressure and rigged down pump truck.
Rigged down pulling unit. Picked up all tools and secured equipment to rig. Prepped to move to new location.
All rig move paper work and permits were signed and gone over with all well site personal. Moved to new location.