

Submit 1 Copy To Appropriate District Office
District I - (575) 393-6161
1625 N. French Dr., Hobbs, NM 88240
District II - (575) 748-1283
811 S. First St., Artesia, NM 88210
District III - (505) 334-6178
1000 Rio Brazos Rd., Aztec, NM 87410
District IV - (505) 476-3460
1220 S. St. Francis Dr., Santa Fe, NM 87505

State of New Mexico
Energy, Minerals and Natural Resources

OIL CONSERVATION DIVISION
1220 South St. Francis Dr.
Santa Fe, NM 87505

Form C-103
Revised August 1, 2011

SUNDRY NOTICES AND REPORTS ON WELLS (DO NOT USE THIS FORM FOR PROPOSALS TO DRILL OR TO DEEPEN OR PLUG BACK TO A DIFFERENT RESERVOIR. USE "APPLICATION FOR PERMIT" (FORM C-101) FOR SUCH PROPOSALS.)		WELL API NO. 30-025-12328
1. Type of Well: Oil Well <input type="checkbox"/> Gas Well <input type="checkbox"/> Other <u>INJECTION</u>		5. Indicate Type of Lease STATE <input checked="" type="checkbox"/> FEE <input type="checkbox"/>
2. Name of Operator CHEVRON U.S.A. INC.		6. State Oil & Gas Lease No.
3. Address of Operator 15 SMITH ROAD, MIDLAND, TEXAS 79705		7. Lease Name or Unit Agreement Name WEST DOLLARHIDE DRINKARD UNIT
4. Well Location Unit Letter: B 660 feet from the NORTH line and 1980 feet from the EAST line Section 32 Township 24S Range 38E NMPM County LEA		8. Well Number 43
11. Elevation (Show whether DR, RKB, RT, GR, etc.)		9. OGRID Number 4323
		10. Pool name or Wildcat DOLLARHIDE TUBB DRINKARD

12. Check Appropriate Box to Indicate Nature of Notice, Report or Other Data

NOTICE OF INTENTION TO:

PERFORM REMEDIAL WORK ☐ PLUG AND ABANDON ☐
TEMPORARILY ABANDON ☐ CHANGE PLANS ☐
PULL OR ALTER CASING ☐ MULTIPLE COMPL ☐
DOWNHOLE COMMINGLE ☐

SUBSEQUENT REPORT OF:

REMEDIAL WORK ☐ ALTERING CASING ☐
COMMENCE DRILLING OPNS. ☐ P AND A ☐
CASING/CEMENT JOB ☐

OTHER:

OTHER: STIMULATION, RUN CHART

13. Describe proposed or completed operations. (Clearly state all pertinent details, and give pertinent dates, including estimated date of starting any proposed work). SEE RULE 19.15.7.14 NMAC. For Multiple Completions: Attach wellbore diagram of proposed completion or recompletion.

PLEASE FIND ATTACHED, REPORTS FOR WORK DONE FROM 07/23/2013 THROUGH 08/08/2013.

08-08-13: NOTIFIED NMOC. RAN CHART. PRESS TO 560 PSI FOR 30 MINUTES. (ORIGINAL & COPY OF CHART ATTACHED).

Spud Date:

Rig Release Date:

I hereby certify that the information above is true and complete to the best of my knowledge and belief.

SIGNATURE

Denise Pinkerton

TITLE: REGULATORY SPECIALIST

DATE: 08/28/2013

Type or print name: DENISE PINKERTON

E-mail address: leakejd@chevron.com

PHONE: 432-687-7375

For State Use Only

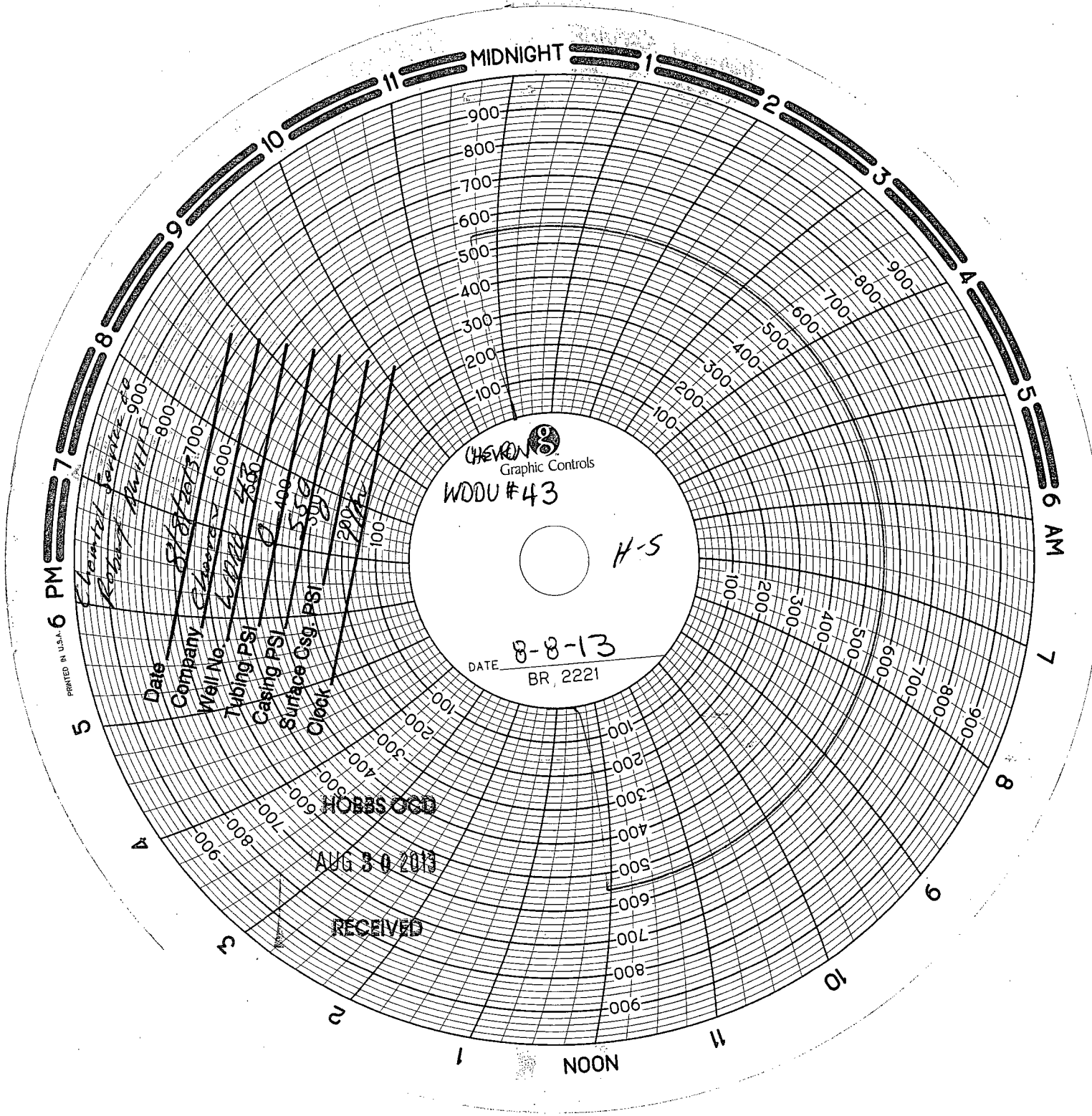
APPROVED BY:

TITLE

DATE

Conditions of Approval (if any):

SEP 04 2013



MIDNIGHT

900

800

700

600

500

400

300

200

100

100

200

300

400

500

600

700

800

900

100

200

300

400

500

600

700

800

900

100

200

300

400

500

600

700

800

900

100

200

300

400

500

600

700

800

900

100

200

300

400

500

600

700

800

900

100

200

300

400

500

600

700

800

900

100

200

300

400

500

600

700

800

900

100

200

300

400

500

600

700

800

900

100

200

300

400

500

600

700

800

900

100

200

300

400

500

600

700

800

900

100

200

300

400

500

600

700

800

900

100

200

300

400

500

600

700

800

900

100

200

300

400

500

600

700

800

900

100

200

300

400

500

600

700

800

900

100

200

300

400

500

600

700

800

900

100

200

300

400

500

600

700

800

900

100

200

300

400

500

600

700

800

900

100

200

300

400

500

600

700

800

900

100

200

300

400

500

600

700

800

900

100

200

300

400

500

600

700

800

900

100

200

300

400

500

600

700

800

900

100

200

300

400

500

600

700

800

900

100

200

300

400

500

600

700

800

900

100

200

300

400

500

600

700

800

900

100

200

300

400

500

600

700

800

900

100

200

300

400

500

600

700

800

900

100

200

300

400

500

600

700

800

900

100

200

300

400

500

600

700

800

900

100

200

300

400

500

600

700

800

900

100

200

300

400

500

600

700

800

900

100

200

300

400

500

600

700

800

900

100

200

300

400

500

600

700

800

900

100

200

300

400

500

600

700

800

900

100

200

300

400

500

600

700

800

900

100

200

300

400

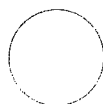
500

600

700

CHEMICAL SERVICE
ROBERT DUMMIS

30025 12328
B-32 245 388
660 N 1980 E





Summary Report

Major Rig Work Over (MRWO)
Stimulation
Job Start Date: 7/23/2013
Job End Date: 8/8/2013

Well Name WEST DOLLARHIDE DRINKARD UNIT 043		Lease West Dollarhide Drinkard Unit	Field Name Dollarhide - Primary	Business Unit Mid-Continent	
Ground Elevation (ft)	Original RKB (ft)	Current RKB Elevation		Mud Line Elevation (ft)	Water Depth (ft)

Report Start Date: 7/23/2013

Com

SM: RU unit and tools.

Open well. SITP = 900 psi. RIH w/ 1.59" GR. Unable to get thru crown valve. Remove crown valve. Master valve leaking slightly.

RIH w/ GR. Tag at 6414' WL (Profile at 6424'MD). POOH.

RIH w/ 1.43" "F" blanking plug. Set in profile. Tested tbg to 1200 psi. Bled off pressure to "0" with no build up. POH and LD slickline tools.

RD pump truck and slick line unit. Secure well for night.

Report Start Date: 7/24/2013

Com

Crew travel

SM: tenet, operations, E-Colors, HazID, location hazards, spotting equipment

Move in and spot unit. Spot pipe racks and reverse unit equipment.

RU unit.

ND injection master valve and all lines. Install TIW valve and secure well.

SWA used when operator noticed a hand not looking well. Crew took early break to hydrate and rest. Hand continued to have hands shaking and feeling bad. Called Axiom, Chevron contacts, Nabors pusher. Continued to rest and discuss incident.

Lightning storm moved into area. Leave rig shut down. Crew changes clothes

Crew travel. Reverse operator tested casing, packer, and tubing to 500 psi for 30 minutes.

Report Start Date: 7/25/2013

Com

Crew travel

SM: tenet, E-Colors, HazID, SSE's and mentors, hydration, humidity, operations plan, SSE paperwork

Break bolts on B-1 adapter. All bolts heavily damaged - had to cut off 4 using hacksaw. Unable to break slip locking ring.

Write hot work permit to heat the B-1 adapter. Hold safety meeting with all crew members. Fire watch assigned and duties discussed.

Heat slip bowl. Attempt to break slip lock ring w/ no success.

RU floor and prepare to RU WL unit.

Noon meal

Wait on WL unit

SM.WL unit. JSA and operations procedures. Spot and RU, radio silence. Scada unit on location had breakers pulled inside box by EIS.

RU lubricator. Test same.

RIH w/ 1 11/16" chemical cutter. Locate on packer and plug. Pressure tubing to 300 psi. Cut tubing at 6360 WL'. Tubing pressure fell to "0" and casing pressure rose to 225 ps and then fell back to "0". Both sides dead. TOF is cut tube 1 1/2 joints above packer. Log up and then down thru cut area. Collars logged 1/2" higher after cut. Slight mark at cut point but no obvious separation.

PU on B-1 adapter and tbg string. Tbg not totally cut. Work pipe to 54K maximum string weight (28K overpull) and then pipe parted. String weights = 26K.

LD joint w/ B-1 adapter. NU BOPE.

PU packer and TIH 1 jt. Set pkr w/ 20 K compression. Test BOPE to 300 psi low and 1000 psi high. Tightened flange leak between spool and tbg head before low test. Good tests. LD packer.

Secure well and change clothes.

Crew travel.

Report Start Date: 7/26/2013

Com

Crew travel

SM: tenet, E-Colors, HazID wheel, well control, SSE and mentors, operations plan

SITP = SICP = 0. Caliper elevators. RU to circulate.

Circulate BW to displace packer fluid.

TOH. Recovered 202 jts + cut piece. Strap injection tbg. No modified collars on tbg. Inspect chemical cut. Fish left in hole = 1 1/2 jts of 2 3/8" injection tbg.

Offload injection tbg. Load racks w/ WS. Strap WS. Change elevators and caliper.

PU 3 1/8" OS w/ 2 3/8" spiral grapple. TIH PU WS. Rental WS had some cement scale in tubes. Crew rattled pipe to get drift to fall thru. EOT at 6307'. TOF at 6362'

Secure well. Change clothes.

Crew travel

Report Start Date: 7/27/2013

Com

Crew travel

SM: tenet, SWA, HazID, E-Colors, caliper tools and elevators, operations plan, well control, 360.

SITP=SICP= "0". RU stripper, set COM, caliper elevators.

TIH. Latch fish. Release On/Off tool. Relatch On/Off tool and release again.



Summary Report

Major Rig Work Over (MRWO)

Stimulation

Job Start Date: 7/23/2013

Job End Date: 8/8/2013

Well Name WEST DOLLARHIDE DRINKARD UNIT 043		Lease West Dollarhide Drinkard Unit	Field Name Dollarhide - Primary	Business Unit Mid-Continent	
Ground Elevation (ft)	Original RKB (ft)	Current RKB Elevation		Mud Line Elevation (ft)	Water Depth (ft)

LD swivel. TOH w/ fishing tools.	Com
LD fishing tools. PU retrieving tool. TIH.	
Noon meal	
Finish TIH	
Install stripper head.	
Wash over On/Off tool and clean up wellbore. Space out.	
Secure well. Changes clothes. Debrief operations.	
Crew travel	
Report Start Date: 7/29/2013	
	Com
Crew travel	
SM: tenet, HazID, E-Colors, SWA, 360 MySpace, SWA, well control. operations plan, slickline.	
Wait on slickline unit. Crew was sent to wrong location.	
SM/JSA: RU slickline. Test lubricator. RIH and punch 1.43 "F" blanking plug. Tubing pressure increases to 800 psi. 2nd slickline run to pull plug.	
2 nd run. Latch plug and pull from packer. Unable to pull plug past 4050'. RIH and set plug on profile. Jar off. POH. Note: plug is not set in profile but loose in profile.	
Allow well to flow up annulus to lower pressures. Recovered 200 bbl. 30 bbl in last hour.	
TOH w/ well flowing up annulus.	
LD packer and 1.43 "F" plug. PU bit and BS	
TIH. Secure well.	
Crew travel	
Report Start Date: 7/30/2013	
	Com
Crew travel	
SM: tenet, HazID, SWA, operations plan, introduction of new safety rep	
Set COM, caliper elevators. SITP=SICP=1000 psi. Flow down pressures on annulus. Install new stripper rubber.	
TIH PU WS. Tag fill at 6435'.	
Wash and ream scale/fill to 6541'	
Tubing flowing back enough to cause possible safety risks. Circulate 65 bbl produced fluid down tbg and chase w. 18 bbl BW. Tubing dry w/ BS flowing.	
Wash and ream fill/scale f/ 6435' to 6736'. Tagged firm with pipe stalling swivel. Worked down several times with same results. Pipe sticky on bottom.	
Circulate wellbore clean. Displace tubing with BW to cause annulus to flow.	
LD swivel. TOH.	
Wind changed. Fluid from off pipe is blowing onto operators face and glasses. SWA used to shut down tripping. Decision made to kill well with mud. Begin to reverse circulate. Annulus pressured up to 800 psi and would not bleed off. Break conventional circulation and circulated 5 bbl. Return to reverse circulation and clean up wellbore @ 2 bpm 800 psi.	
Reverse circ 57 bbl 14.5 ppg CaCarb mud into annulus (3000' calculated) holding 150 psi back pressure on tubing. SICP = "0" SITP = 800 psi. Annulus trying to flow very slightly in slugs.	
Bullhead 70 bbl BW down tubing. Chase BW w/ 12 bbl mud. SITP = 450 psi. SICP = 500 psi.	
Secure well. Change clothes.	
Crew travel	
Report Start Date: 7/31/2013	
	Com
Crew travel	
SM: tenet, SWA, E-Colors, HazID, 360 MySpace, operations plan, heat and hydration.	
SITP = "0" - SICP = 150 psi. Attempt to bleed off annulus w/ no success. Pressure fell to 110 psi and well would flow. Tubing stayed dead.	
Bullhead 12 bbl mud down annulus. Casing pressure fell to 80 psi. Bullhead 20 bbl mud down annulus. Casing pressure to 40 psi. Bled off casing pressure and well was dead. Calculated bottom of mud =	
Monitor well for 15 minutes w/ no flow on either side. TOH. First 5 stands started out pulling wet and then dried up. LD BHA.	
SM: JSA and safety meeting with perforators. Discussed: operations plan, radio silence, road guards, RU lubricator and testing, tag lines, SWA, crew assignments, muster area, hospital and transport.	
RU lubricator and guns. Test lubricator to 500 psi. Open blind rams.	
RIH w/ perf gun #1. Found top of mud cap at 249'. Tag down at 6554' WL corrected depth. Work tool up hole w/ 600# extra drag. Work down and tool frees up. Pull up hole 250' logging. RIH and tag again at same spot but fell thru. Continue RIH and tagged down at 6585'. Tools pulling free but unable to get below 6585'. POOH.	
RD lubricator. Disarm guns. location secured from radio silence. RU stripper head.	
Mandatory water break	
PU bit and BS. TIH to TOL.	
Crew travel	



Summary Report

Major Rig Work Over (MRWO)

Stimulation

Job Start Date: 7/23/2013

Job End Date: 8/8/2013

Well Name WEST DOLLARHIDE DRINKARD UNIT 043	Lease West Dollarhide Drinkard Unit	Field Name Dollarhide - Primary	Business Unit Mid-Continent
Ground Elevation (ft)	Original RKB (ft)	Current RKB Elevation	Mud Line Elevation (ft) Water Depth (ft)

Report Start Date: 8/1/2013

Com

Crew travel

SM: tenet, SWA, HazID, E-Colors, IFO, risk management, "don't be afraid to fail". Operations plan.

SITP = slight vacuum SICP = 0. Check COM. Caliper elevators,

TIH.

Reciprocate pipe thru area below 6424' (injection setting depth) to 6600'. Tagged up solid. Used rig tongs to rotate and made about 4" until we could not turn pipe with tongs any more.

Stand back 1 stand. PU single with swivel. Retag

Rotate on tight spot. Torque very smooth - if we add weight the torque get higher but still smooth. No overpull off bottom. Spud on obstruction. After each spud we see some erratic torque for 10 seconds and then gets smooth again. Keep working and finally we started making some hole. After a foot we fell free but had 28K overpull getting back up. Worked/reamed thru tight spot 5 times and no more overpull.

LD swivel and TIH working each stand as before. Tag at 6690' MD. Unable to work thru w/ tongs. PU swivel and work thru. Chase downhole to 6736'. Had 15K overpull when coming off bottom.

LD swivel. TOH to 6400'. Secure well.

Noon meal.

TOH. LD bit and BS. Bit cones had locked up and were smooth.

SM: JSA and safety meeting with perforators. Discussed: operations plan, radio silence - OnStar and DIMS, road guards, RU lubricator and testing, tag lines, SWA, duties, muster area, hospital and transport, tight hole possibilities, weather and lightning, dummy run.

RU lubricator and test to 500 psi.

Run #1: dummy perf gun and weight bars. Tagged bottom at 6690'. Log strip to 6400'. POH.

Run #2: Perf run to shoot 6668' to 6680' w/ 6 JHPF 60 phased. Correlate to Depth Control log dated 12/20/72. Saw fluid level at 475' when POOH (did not see good fluid level on RIH)

Run #3: Perf run to shoot tandem guns @ 6630'-42' and 6648'-54' w/ 6 JHPF as before. W/ CCL at 6628' shot zones w/ hard surface indications. Tools pulled 450# on PU.

RD lubricator.

TIH 20 stands. Secure well for night.

Crew travel.

Report Start Date: 8/2/2013

Com

Crew travel

SM: tenet, HazID, E-Colors, SWA, well control, operations plan, perforating

SITP = "0" SICP = 0. Set COM. Caliper elevators.

TOH w/ kill string.

SM: RU lubricator, perforation operations, radio silence, muster area, GasGun perforating vs JH perforating.

RU tools and lubricator

Run #1: Perf run to shoot 6606'-14' and 6620' - 24' w/ 6 JHPF 60 phased. Correlate to Depth Control log dated 12/20/72. Saw fluid level at 170' when RIH. Fluid on the line at 390' when coming out. Good run.

Perf run #2: 2" GasGun shooting the interval 6668'-80'. Fluid level at 200'. Gun fired w/ light shock to surface and no fluids ejected from wellbore. 1000# overpull @ 6589'.

Perf run #3: GasGun shooting 6648'-54'. FL @ 200'. Gun fired w/ hard shock at surface. No fluid ejected. No drag.

Perf run #4: GasGun shooting 6630'-42'. FL @ 230'. Gun fired w/ medium shock to surface. 700# overpull from 6550' to 6400'.

Perf run #5: GasGun shooting 6620'-24'. FL @ 230'. Gun fired w/ no shock to surface. Bobble on the line and shorted out firing head were only indications.

Perf run #6: GasGun shooting 6606'-14'. Very light indications on surface. Pull to TOL. RIH and tagged down at 6621' WL. POH.

RD lubricator. Prepare floor to trip pipe.

PU bit and BS. TIH to 4500'. Secure well for weekend.

Crew travel.

Report Start Date: 8/5/2013

Com

Crew travel

SM: tenet, HazID, SWA, E-Colors, well control, operations plan.

SITP = SICP = 0. Set COM. Caliper elevators.

TIH. Tag at 6640'.

PU swivel.

Tag and push obstruction down hole to PBTD at 6736'MD.

RD swivel. Prepare to TOH

TOH 22 stands. Pipe comes wet.

RU pump lines. Pressure up tubing to 1000 psi and obstruction cleared. Tubing on vacuum.



Summary Report

Major Rig Work Over (MRWO)

Stimulation

Job Start Date: 7/23/2013

Job End Date: 8/8/2013

Well Name WEST DOLLARHIDE DRINKARD UNIT 043		Lease West Dollarhide Drinkard Unit	Field Name Dollarhide - Primary	Business Unit Mid-Continent	
Ground Elevation (ft)	Original RKB (ft)	Current RKB Elevation		Mud Line Elevation (ft)	Water Depth (ft)

Com					
TOH					
Noon meal					
Finish TOH. LD bit and BS. Lost 1 cone in well.					
PU injection packer assembly.					
TIH.					
Set packer at 6421'. Release on/off tool.					
Circulate mud from wellbore.					
Test packer seat and casing to 500 psi.					
LD WS. Secure well.					
Crew travel					
Report Start Date: 8/6/2013					
Com					
Crew travel to LOC					
SM: tenet, HazID, E-Colors, SWA, well control, operations plan, perforating					
Caliper both sets of elevators and tubing, TOH Laying down Rest of 2-3/8 J55 4.7# EUE Work string, Change out Elevators for 2-3/8 PH6 tubing					
TOH with 79 Joints of 2-3/8 PH6 work string					
Move work string off of the rack and move injector string onto pipe racks.					
TIH with 2-3/8 4.7# J55 injector string, Have 111 joints in hole or about 3500' shut in well because of lighting					
Crew Travel home					
Report Start Date: 8/7/2013					
Com					
Crew travel to LOC					
SM: tenet, HazID, E-Colors, SWA, well control, operations plan, RD Rig, heat injury's					
Caliper elevators and tubing, TIH 91 joints of 2-3/8 4.7# J55 injector string, latched on to packer got off of packer to pumped packer fluid					
RU hose to pump truck and pump 120 bbls of packer fluid down backside, tried to latch packer couldn't latch onto packer pulled up to flush fluid over packer to clean top of packer					
Safety hand had a toolbox meeting with rig crew, talked about heat injury's, operation of the rig, don't cover up safety issues, and traveling from home to LOC and back again					
Pumped 12 bbls thru tubing to wash top of packer off, latched packer					
ND BOP to NU WH					
Shut down for lightning and high winds, waiting out storm					
Still seeing lightning shut down for night, Crew travel home					
Report Start Date: 8/8/2013					
Com					
Crew travel to LOC					
SM: tenet, HazID, E-Colors, SWA, well control, operations plan, high pressure testing with fluid and heat injury's					
ND BOP					
NU WH					
pumped 550psi on back side, Pumped 5 Bbls of water at 1.5 BPM with 1300psi on gage until shear-off pump-out plug shears, plug pumped out at 2750psi. Tubing has 1000psi on it with 500 differential, conduct MIT and recorded chart for 30 minutes, good test, Notified NMOCD, got ok from them					
RD rig and move off Location to new LOC					