



HOBBS OCD

SEP 09 2013

RECEIVED

30-025-41398

H₂S Contingency Plan

H₂S Contingency Plan Holders:

Attached is an H₂S Contingency Plan for COPC Permian Drilling working in the West Texas and Southeastern New Mexico areas operated by ConocoPhillips Company.

If you have any questions regarding this plan, please call Tom Samarripa at ConocoPhillips Company, 432.368.1263.

Table of Contents

Section

I. Purpose

II. Scope

III. Procedures

IV. Emergency Equipment and Maintenance

Emergency Equipment Suppliers

General Information

H₂S Safety Equipment and Monitoring Systems

V. Emergency Call List

VI. Public/Media Relations

VII. Public Notification/Evacuation

VIII. Forms/Reports



HYDROGEN SULFIDE (H₂S) OPERATIONS

Contingency Plan
For
Permian Drilling Operations

ConocoPhillips Company
Mid-Continent Business Unit
Permian Asset Area

I. PURPOSE

The purpose of this Contingency Plan is to provide an organized plan of action for alerting and protecting the public following the release of a potentially hazardous volume of hydrogen sulfide. This plan prescribes mandatory safety procedures to be followed in the event of a release of H₂S into the atmosphere from exploration and production operations included in the scope of this plan. The extent of action taken will be determined by the supervisor and will depend on the severity and extent of H₂S release. Release of H₂S must be reported to the Drilling Superintendent and documented on the IADC and in Wellview.

II. SCOPE

This Contingency plan shall cover the West Texas and Southeastern New Mexico areas, which contain H₂S gas and could result in a release where the R.O.E. is greater than 100 ppm at 50' and less than 3000' and does not include a public area and 500 ppm R.O.E. does not include a public road. Radius of exposure is defined as the maximum distance from the source of release that a specified calculated average concentration of H₂S could exist under specific weather conditions.

III. PROCEDURES

First Employee on Scene

- _____ Assess the incident and ensure your own safety.

Note the following:

- _____ Location of the incident.
- _____ Nature of the incident.
- _____ Wind direction and weather conditions.
- _____ Other assistance that may be needed.

- _____ Call local supervisory personnel (refer to Section V: Emergency Call List) until personal contact is made with a person on the list.

- _____ Perform emergency assessment and response as needed. The response may include rescue and/or evacuation of personnel, shutting in a system and/or notification of nearby residents/public (refer to Section VII: Public Notification/Evacuation).

- _____ Secure the site.

- _____ Follow the direction of the On-scene Incident Commander (first ConocoPhillips supervisor arriving on-scene).

First Supervisor on Scene (ConocoPhillips On-scene Incident Commander)

- _____ Becomes ConocoPhillips' On-scene Incident Commander upon arrival to location.
- _____ Follow the principles of the **D.E.C.I.D.E.** process below to assess the incident. (Note wind direction and weather conditions and ensure everyone's safety).

DETECT the problem

ESTIMATE likely harm without intervention

CHOOSE response objectives

IDENTIFY action options

DO the best option

EVALUATE the progress

- _____ Complete the Preliminary Emergency Information Sheet (refer to Section VIII: Forms/Reports).
- _____ Call your supervisor (refer to Section V: Emergency Call List).

- Perform emergency response as necessary. (This may include notification & evacuation of all personnel and/or nearby residents/public (refer to Section VII: Public Notification/Evacuation), requesting assistance from ConocoPhillips personnel or outside agencies (refer to Section V: Emergency Call List) and obtaining any safety equipment that may be required (refer to Section IV: Emergency Equipment and Maintenance).
- Notify appropriate local emergency response agencies of the incident as needed. Also notify the appropriate regulatory agencies. (refer to Section V: Emergency Call List).
- Ensure site security.
 - Set barricades and /or warning signs at or beyond the calculated 100 ppm H₂S radius of exposure (ROE). All manned barricades must be equipped with an H₂S monitor and a 2-way radio.
 - Set roadblocks and staging area as determined.
- Establish the Incident Command Structure by designating appropriate on-scene response personnel as follows:

Recording Secretary	_____
Public Information Officer	_____
Safety/Medical Officer	_____
Decontamination Officer	_____
- Have the “Recording Secretary” begin documenting the incident on the “Incident Log” (refer to Section VIII: Forms/Reports).
- If needed, request radio silence on all channels that use your radio tower stating that, until further notice, the channels should be used for emergency communications only.
- Perform a Site Characterization and designate the following:

Hot Zone	--	Hazardous Area
Warm Zone	--	Preparation & Decontamination Area
Cold Zone	--	Safe Area

AND

On-Scene Incident Command Post	(Cold Zone)
Public Relations Briefing Area	(Cold Zone)
Staging Area	(Cold Zone)
Triage Area	(Cold Zone)
Decontamination Area	(Warm Zone)

- _____ Refer all media personnel to ConocoPhillips' On-Scene Public Information Officer (refer to Section VI: Public Media Relations).
- _____ Coordinate the attempt to stop the release of H₂S. You should consider closing upstream and downstream valves to shut-off gas supply sources, and/or plugging or clamping leaks. Igniting escaping gas to reduce the toxicity hazard should be used **ONLY AS A LAST RESORT**. (It must first be determined if the gas can be safely ignited, taking into consideration if there is a possibility of a widespread flammable atmosphere.)
- _____ Once the emergency is over, return the situation to normal by:
 - Confirming the absence of H₂S and combustible gas throughout the area,
 - Discontinuing the radio silence on all channels, stating that the emergency incident is over,
 - Removing all barricades and warning signs,
 - Allowing evacuees to return to the area, and
 - Advising all parties previously notified that the emergency has ended.
- _____ Ensure the proper regulatory authorities/agencies are notified of the incident (refer to Section V: Emergency Call List).
- _____ Clean up the site. (Be sure all contractor crews have had appropriate HAZWOPER training.)
- _____ Report completion of the cleanup to the Asset Environmentalist. (Environmentalism will report this to the proper State and/or Federal agencies.)

_____ Fill out all required incident reports and send originals to the Safety Department.
(Keep a copy for your records.)

- Company employee receiving occupational injury or illnesses.
- Company employee involved in a vehicle accident while driving a company vehicle.
- Company property that is damaged or lost.
- Accident involving the public or a contractor; includes personal injuries, vehicle accidents, and property damage. Also includes any situation, which could result in a claim against the Company.
- Hazardous Material Spill/Release Report Form
- Emergency Drill Report

_____ Assist the Safety Department in the investigation of the incident. Review the factors that caused or allowed the incident to occur, and modify operating, maintenance, and/or surveillance procedures as needed. Make appropriate repairs and train or retrain employees in the use and operation of the system.

_____ If this incident was simulated for practice in emergency response, complete the Emergency Drill Report found in Section VIII: Forms/Reports and submit a copy to the Drilling Manager. (Keep one copy in area files to document exercising of the plan.)

Emergency Procedures

Responsibility

In the event of a release of potentially hazardous amounts of H₂S, all personnel will immediately proceed upwind/ crosswind to the nearest designated briefing area. The COPC Drilling Rep. will immediately, upon assessing the situation, set this into action by taking the proper procedures to contain the gas and notify appropriate people and agencies.

1. In an emergency situation, the Drilling Rep. on duty will have complete responsibility and will take whatever action is deemed necessary in an emergency situation to insure the personnel's safety, to protect the well and to prevent property damage.
2. The Toolpusher will assume all responsibilities of the Drilling Rep. in an emergency situation in the event the Drilling Rep. becomes incapacitated.
3. Advise each contractor, service company, and all others entering the site that H₂S may be encountered and the potential hazards that may exist.
4. Authorize the evacuation of local residents if H₂S threatens their safety.
5. Keep the number of persons on location to a minimum during hazardous operations.
6. Direct corrective actions to control the flow of gas.
7. Has full responsibility for igniting escaping gas to reduce the toxicity hazard.
This should be used **ONLY AS A LAST RESORT.**

IV. EMERGENCY EQUIPMENT and MAINTENANCE

Emergency Equipment Suppliers

Safety International – Odessa, Tx.

H ₂ S monitors	432.580.3770
Breathing air includes cascade systems	
First aid and medical supplies	
Safety equipment	
H ₂ S Specialist	

Total Safety US Odessa, Tx/ Hobs, NM

H ₂ S monitors	432.561.5049 Odessa, Tx.
Breathing air includes cascade systems	575.392.2973 Hobbs, NM
Fire fighting equipment	
First aid and medical supplies	
Safety equipment	

Indian Fire & Safety – Hobbs, NM

H ₂ S monitors	575.393.3093
Breathing air including cascade systems trailer mounted	
30 minute air packs	
Safety Equipment	

Emergency Equipment and Maintenance (continued)

General Information

Materials used for repair should be suitable for use where H₂S concentrations exceed 100 ppm. In general, carbon steels having low-yield strengths and a hardness below RC-22 are suitable. The engineering staff should be consulted if any doubt exists on material specifications.

Appropriate signs should be maintained in good condition at location entrance and other locations as specified in Texas Rule 36 and NMOCD Rule 118.

All notification lists should be kept current with changes in names, telephone numbers, etc.

All shutdown devices, alarms, monitors, breathing air systems, etc., should be maintained in accordance with applicable regulations.

All personnel working in H₂S areas shall have received training on the hazards, characteristics, and properties of H₂S, and on procedures and safety equipment applicable for use in H₂S areas.

H2S Safety Equipment and Monitoring Systems

An H2S emergency response package will be maintained at locations requiring H2S monitoring. The package will contain at a minimum the following:

3 – Fixed H2S sensors located as follows:

- 1 – on the rig floor
- 1 – at the Bell Nipple
- 1 – at the Shale Shaker or Flowline

1 – Entrance Warning Sign located at the main entrance to the location, with warning signs and colored flags to determine the current status for entry into the location.

2 – Windsocks that are clearly visible.

1 – Audible warning system located on rig floor

2 – Visual warning systems (Beacon Lights)

- 1 – located at the rig floor
- 1 – located in the mud mixing room

Note: All alarms (audible and visual) should be set to alarm at 10 ppm.

2 - Briefing areas clearly marked

- 2 - SCBA's at each briefing area
- 1- SCBA located at the Drilling Reqs office

Note:

- 1. All SCBA's must be positive pressure type only!!!**
- 2. All SCBA's must either be Scott or Drager brand.**
- 3. All SCBA's face pieces should be size large, unless otherwise specified by the Drilling Supervisor.**

5 – Emergency Escape Paks located at Top Doghouse.

Note: Ensure provisions are included for any personnel working above rig floor in derrick.

1 – Tri or Quad gas monitor located at the Drilling Reqs office. This will be used to determine if the work area is safe to re-enter prior to returning to work following any alarm.

V. EMERGENCY CALL LIST:

The following is a priority list of personnel to contact in an emergency situation:

Supervisory Personnel	Office No.	Home	Cellular
R.W. "Cotton" Hair Permian Drilling Supt.	432.368.1302	432.563.9467	432.556.9116
Dennis Paschall Permian Drilling Field Supt.	432.368.1517	432.683.9400	432.238.3150
Tom Samarripa WSER	423.368.1263	432.367.4961	432.556.9113
Ty Maxey Permian Asset Operations Manager	432.368.1100		281.217.8492
Leo Gatson Safety and Environmental Coordinator	432.368.1248		432.631.066
Lynn Dooley Drilling Mngr.	832.486.2567	281.225.8063	281.435.3517

EMERGENCY CALL LIST: State Officials

Regulatory Agencies

New Mexico Oil Conservation Commission

P. O. Box 1980
Hobbs, New Mexico 88240-1980

Office: 575.393.6161

Bureau of Land Mngt.

Carlsbad Field Office
620 E. Greene St.
Carlsbad, NM 88220

Office: 575.234.5972

Fax: 575.885.9264

BLM 24 Hr on call # Lea County: 575-393-3612

EMERGENCY CALL LIST: Local Officials

Refer to the Location Information Sheet

Note: The LIS should include any area residents (i.e. rancher's house, etc)

ConocoPhillips Emergency Call List and Location Information Sheet

ConocoPhillips- 281-293-3600

Drilling Superintendent	Cotton Hair	Office: 432-368-1302 Cell: 432-556-9116
Safety (WSER)	Tom Samarraipa	Office: 432-368-1263 Cell: 432-556-9113
Drilling Engineer	Steve Moore	Office: 832-486-2459 Cell: 281-467-7596
Regulatory Contact	Susan Maunder	Office: 432-688-6913 Cell: 432-556-6501

Emergency Numbers

Hospital: Lea Co. Regional Medical Center (Hobbs)575-492-5000
Ambulance: Hobbs Fire Dept.575-397-9308
Air Ambulance: Care Star888-624-3571
 Aero Star800-627-2376
Fire Dept. (Hobbs)575-397-9308
 (Maljamar non-emerg)575-676-4100
State Police (Artesia)575-748-9718
 (Hobbs)575-392-5580
Sheriff (Lovington)..... 575-396-3611
Police (Lovington)575-396-5166
NMOCD575-393-6161
 (Emerg)575-370-3186
BLM Switchboard.....575-393-3612
BLM 24 Hr on Call, Lea County.....575-393-3612
New Mexico Emergency Response Comm (Santa Fe)505-476-9600
New Mexico State Emerg Ops Ctr505-476-9635
National Emerg Response Center800-424-8802

Number of Residences within 1 mile of Well: There are no residences within one mile of the well to be drilled.

VI. Public Media Relations

The **Public Information Officer** becomes the ConocoPhillips on-scene contact (once designated by the Phillips On-Scene Incident Commander).

Confers with Houston Office's Human Relations Representative, who is responsible for assisting in the coordination of local public relations duties.

Answer media questions honestly and **only with facts**, do not speculate about the cause, amount of damage, or the potential impact of the incident on the community, company, employees, or environment. (This information will be formally determined in the incident investigation.)

If you are comfortable answering a question or if you are unsure of the answer, use terms such as the following:

- "I do not know. I will try to find out."
- I am not qualified to answer that question, but I will try to find someone who can."
- "It is under investigation."

Note:

Do Not Say "No Comment." (This implies a cover-up.)

Do Not Disclose Names of Injured or Dead! Confer with the Houston Office's Human Relations Representative, who is responsible for providing that information.

VII. Public Notification/Evacuation

Alert and/or Evacuate People within the Exposure Area

1. Public Notification – If the escape of gas could result in a hazard to area residents, the general public, or employees, the person **first** observing the leak should take **immediate** steps to cause notification of any nearby residents. The avoidance of injury or loss of life should be of prime consideration and given top priority in all cases. If the incident is of such magnitude, or at such location as to create a hazardous situation, local authorities will be requested to assist in the evacuation and roadblocks of the designated area until the situation can be returned to normal.

Note: Bilingual employees may be needed to assist in notification of residents.

2. Evacuation Procedures – Evacuation will proceed upwind from the source of the release of H₂S. Extreme caution should be exercised in order to avoid any depressions or low-lying areas in the terrain. The public area within the radius of exposure should be evacuated in a southwesterly and southeasterly direction so as to avoid the prevailing southern wind direction.

Roadblocks and the staging area should be established as necessary for current wind conditions.

Note: In all situations, consideration should be given to wind direction and weather conditions. H₂S is heavier than air and can settle in low spots. Shifts in wind direction can also change the location of possible hazardous areas.

VIII. FORMS & REPORTS

- I. Incident Log
- II. Preliminary Emergency Information Sheet
- III. Emergency Drill Report
- IV. Onshore Hazardous Material Spill/Release Report Form
- V. Immediate Report of Occupational Injury or Illness
 - Report of Accident-Public Contractor
 - Report of Loss or Damage to Company Property
 - Report of Automotive Incident

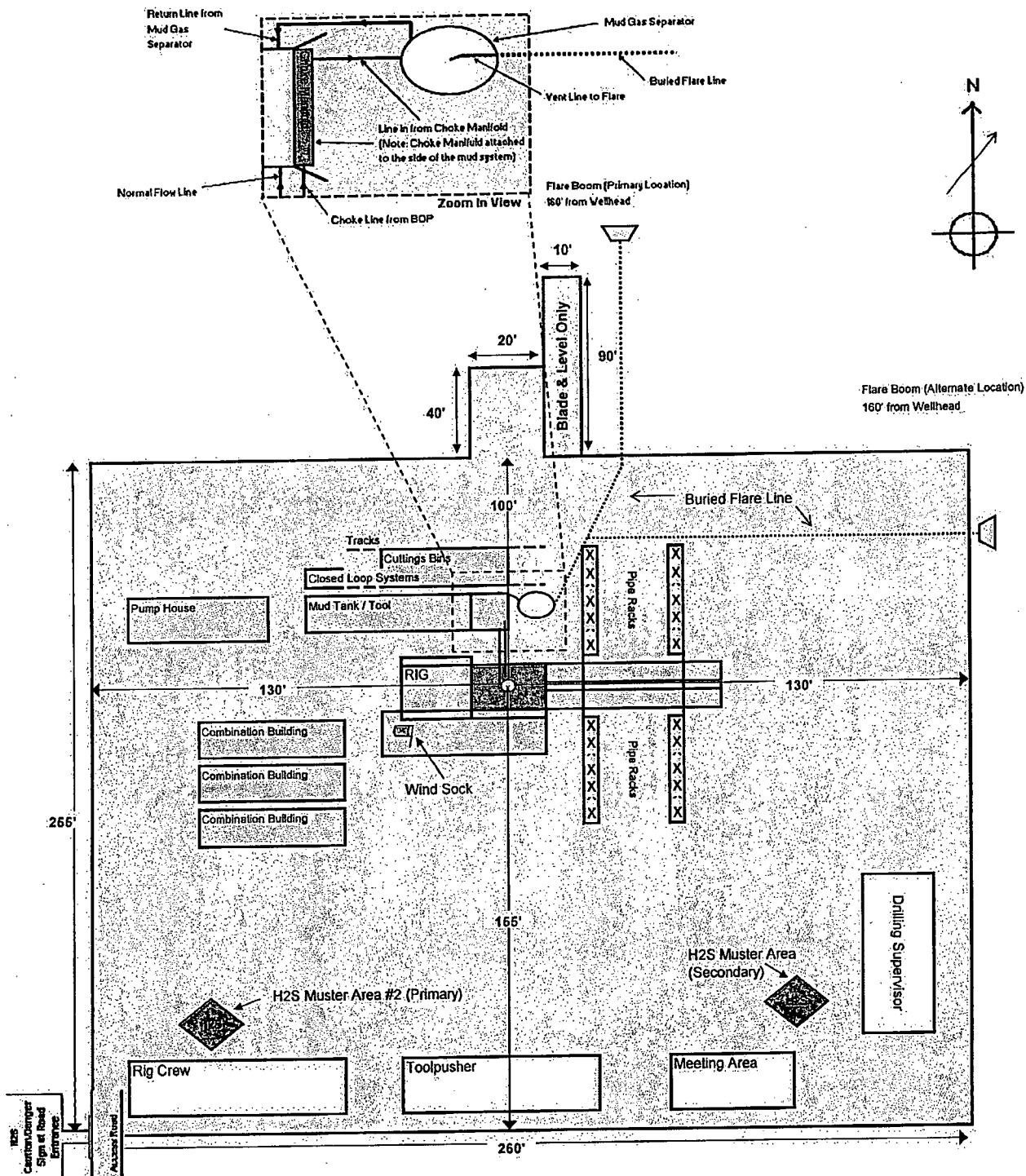
ConocoPhillips

Location Schematic and Rig Layout for Closed Loop System

(PICTURE NOT TO SCALE)

Drawn by:
James Chen
Drilling Engineer, ConocoPhillips Company
Date: 12-November-2012 (updated March 2013)

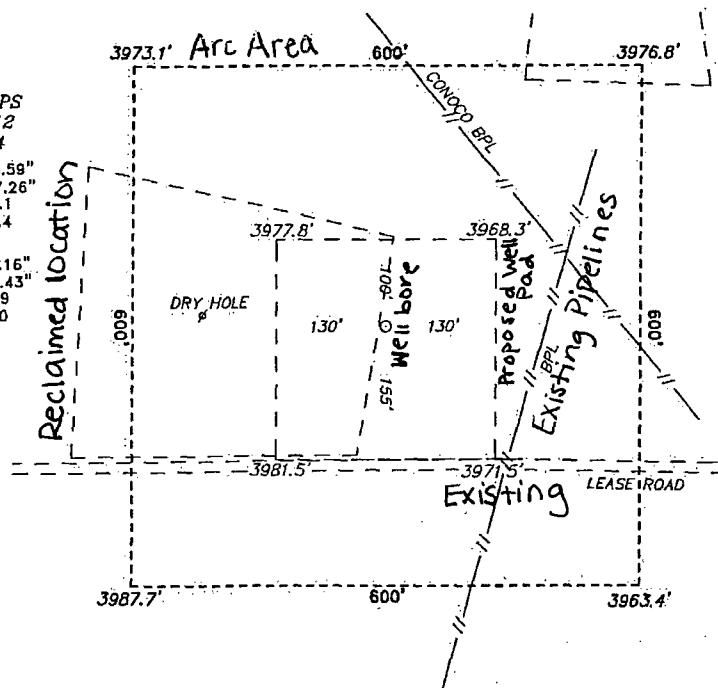
NOTE: There are two muster areas depending on the prevailing wind direction, generally south in this area. The muster area that is furthest upwind/crosswind will be the designated area for briefing and assessing the situation. In the event a full evacuation is deemed necessary, all personnel will exit the location via the access road. If the main access road is blocked off, they will exit via a secondary road (if available) or walk off-route in the upwind/crosswind direction.



SECTION 27, TOWNSHIP 17 SOUTH, RANGE 32 EAST, N.M.P.M.,
LEA COUNTY, NEW MEXICO.

WELL PAD
VICINITY

CONOCO PHILLIPS
MCA UNIT #512
ELEV. - 3974
Lat - N 32°48'15.59"
Long - W 103°45'17.26"
NMSPCE - N 656834.1
E 719096.4
(NAD-83)
Lat - N 32°48'15.16"
Long - W 103°45'15.43"
NMSPCE - N 656769.9
E 677918.0
(NAD-27)



200 0 200 400 FEET
SCALE: 1" = 200'

Directions to Location:

FROM THE JUNCTION OF HWY 529 AND MALJAMAR,
GO NORTH ON MALJAMAR FOR 1.0 MILES TO LEASE
ROAD, ON LEASE ROAD GO EAST 0.5 MILES TO
PROPOSED LEASE ROAD.

ConocoPhillips

REF: MCA UNIT #512 / WELL PAD VICINITY

THE MCA UNIT #512 LOCATED 2185'

FROM THE SOUTH LINE AND 2470' FROM THE WEST LINE OF
SECTION 27, TOWNSHIP 17 SOUTH, RANGE 32 EAST,
N.M.P.M., LEA COUNTY, NEW MEXICO.

BASIN SURVEYS P.O. BOX 1786-HOBBS, NEW MEXICO

W.O. Number: 28058

Drawn By: J. SMALL

Date: 02-21-2013

Disk: JMS 28058

Survey Date: 02-18-2013

Sheet 2 of 10 Sheets



Normal operating pressures will be <100 psig.
 All production flowlines will be above ground.
 All production flowlines will be routed to the 2F production header.
 Powerlines will be above ground to edge of well pad.
 Electrical lines will be buried from edge of well pad to wellhead and pumping unit (less than 150 ft).

- MCA #512: Flowline ~950 FT, 2-7/8" J55 (steel) Tubing; Powerline ~1,500 ft
 MCA #513: Flowline ~950 FT, 2-7/8" J55 (steel) Tubing; Powerline ~300 ft
 MCA #514: Flowline ~2,350 FT, 2-7/8" J55 (steel) Tubing; Powerline ~250 ft



MCA 500 Series

Facility Map

Flowline	————
Powerline (New)	- - - - -
Powerline (Existing)	————



DISCLAIMER: This map is for informational purposes and has not been prepared for, nor is it suitable for legal, surveying, or engineering purposes. Users of this information should review or consult the primary data and information sources to ascertain the usability of the information. ConocoPhillips makes no warranty or guarantee as to the content, accuracy, timeliness, or completeness of any of the data provided and assumes no legal responsibility for the information contained herein.
 © Copyright 2010 xxxxxxx. All rights reserved.