

District I
1625 N. French Dr., Hobbs, NM 88240
Phone: (575) 293-6161 Fax: (575) 293-0720
District II
811 S. First St., Artesia, NM 88210
Phone: (575) 748-1283 Fax: (575) 748-9720
District III
1000 Rio Brazos Road, Aztec, NM 87410
Phone: (505) 334-6178 Fax: (505) 334-6170
District IV
1220 S. St. Francis Dr., Santa Fe, NM 87505
Phone: (505) 476-3460 Fax: (505) 476-3462

State of New Mexico
Energy, Minerals & Natural Resources Department
OIL CONSERVATION DIVISION
1220 South St. Francis Dr.
Santa Fe, NM 87505

Form C-102
Revised August 1, 2011
Submit one copy to appropriate
District Office
☐ AMENDED REPORT

WELL LOCATION AND ACREAGE DEDICATION PLAT

¹ API Number 30-025-41182	² Pool Code 97964	³ Pool Name WC-025 G-07 S243225C; LOWER BONE SPRING
⁴ Property Code 39911	⁵ Property Name BELL LAKE 24 FED	⁶ Well Number 1H
⁷ OGRID No. 6137	⁸ Operator Name DEVON ENERGY PRODUCTION COMPANY, L.P.	⁹ Elevation 3578.9

¹⁰ Surface Location

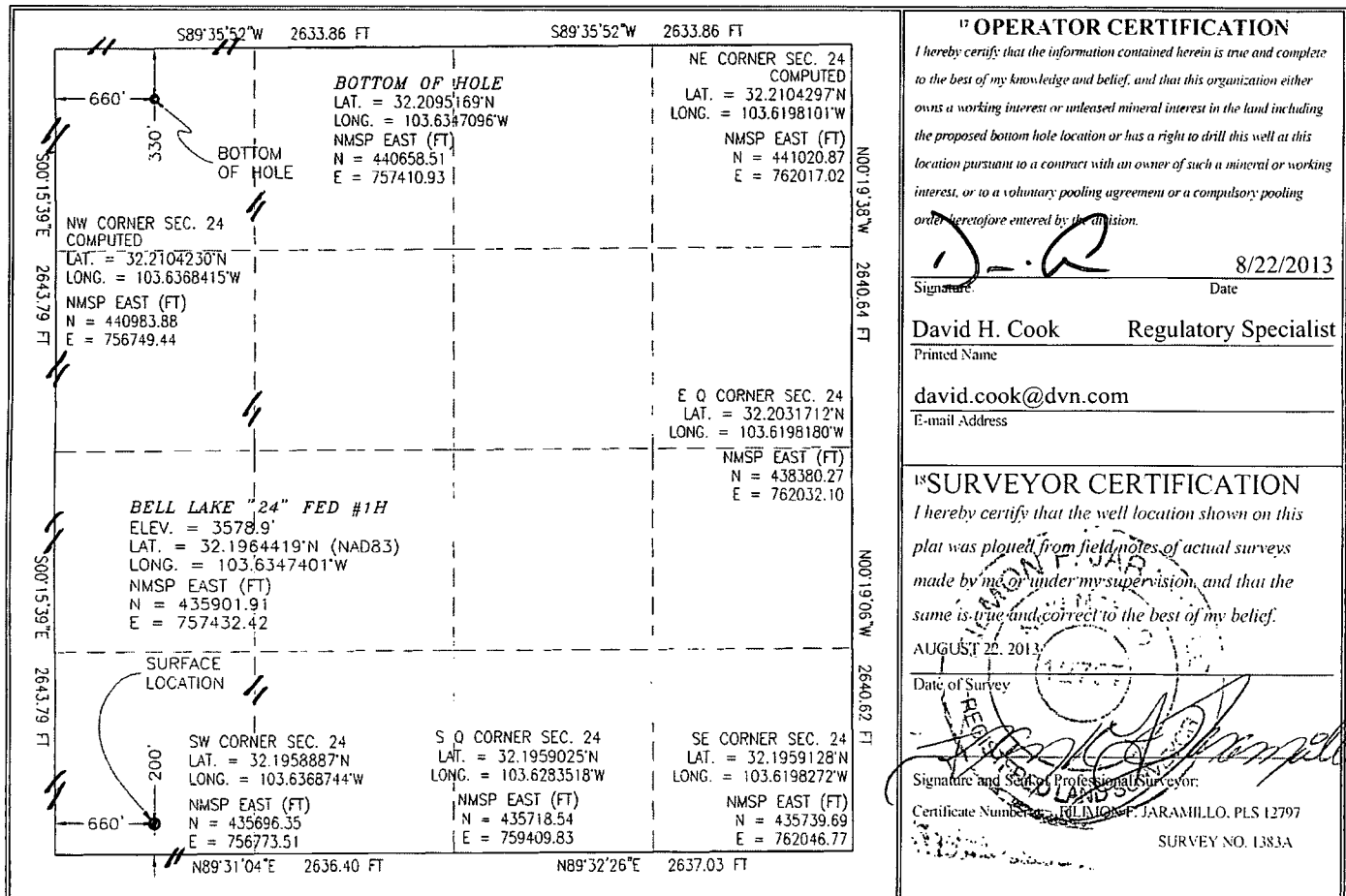
UL or lot no.	Section	Township	Range	Lot Idn	Feet from the	North/South line	Feet from the	East/West line	County
M	24	24 S	32 E		200	SOUTH	660	WEST	LEA

¹¹ Bottom Hole Location If Different From Surface

UL or lot no.	Section	Township	Range	Lot Idn	Feet from the	North/South line	Feet from the	East/West line	County
D	24	24 S	32 E		330	NORTH	660	WEST	LEA

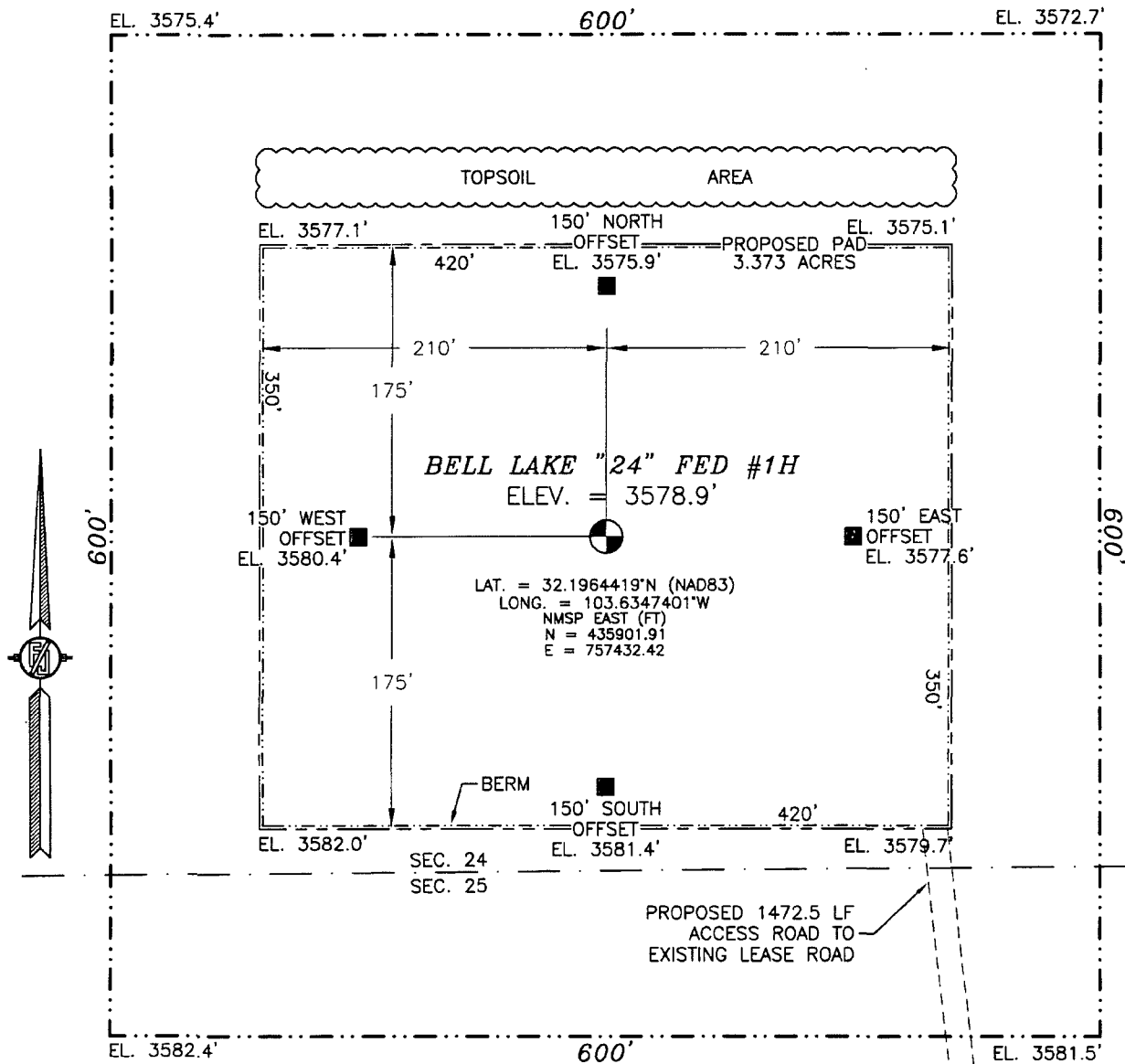
¹² Dedicated Acres 160	¹³ Joint or Infill	¹⁴ Consolidation Code	¹⁵ Order No.
--------------------------------------	-------------------------------	----------------------------------	-------------------------

No allowable will be assigned to this completion until all interests have been consolidated or a non-standard unit has been approved by the division.



SEP 17 2013

SECTION 24, TOWNSHIP 24 SOUTH, RANGE 32 EAST, N.M.P.M.
LEA COUNTY, STATE OF NEW MEXICO



0 10 50 100 200

SCALE 1" = 100'

DIRECTIONS TO LOCATION

FROM INTERSECTION OF STATE HIGHWAY 128 AND STATE HIGHWAY 1 (ORLA HIGHWAY) GO APPROX. 3.0 MILES TO THE EAST ON STATE HIGHWAY 128 TO A LEASE ROAD ON RIGHT (SOUTH) OF STATE HIGHWAY 128, TURN RIGHT (SOUTH) ON LEASE ROAD GO APPROX. 1.1 MILES TO A CATTLE GUARD ON RIGHT (WEST), TURN RIGHT (WEST) GO APPROX. 0.6 OF A MILE TO EXISTING PAD AT SOUTHWEST CORNER OF PAD IS A LATH WITH RED AND WHITE FLAGGING MARKER BEGINNING PROPOSED ROAD. FOLLOW LATHS (WEST) APPROX. 0.2 OF A MILE, TURN RIGHT (NORTH) GO APPROX. 0.1 OF A MILE TO LOCATION.

DEVON ENERGY PRODUCTION COMPANY, L.P.

BELL LAKE "24" FED #1H

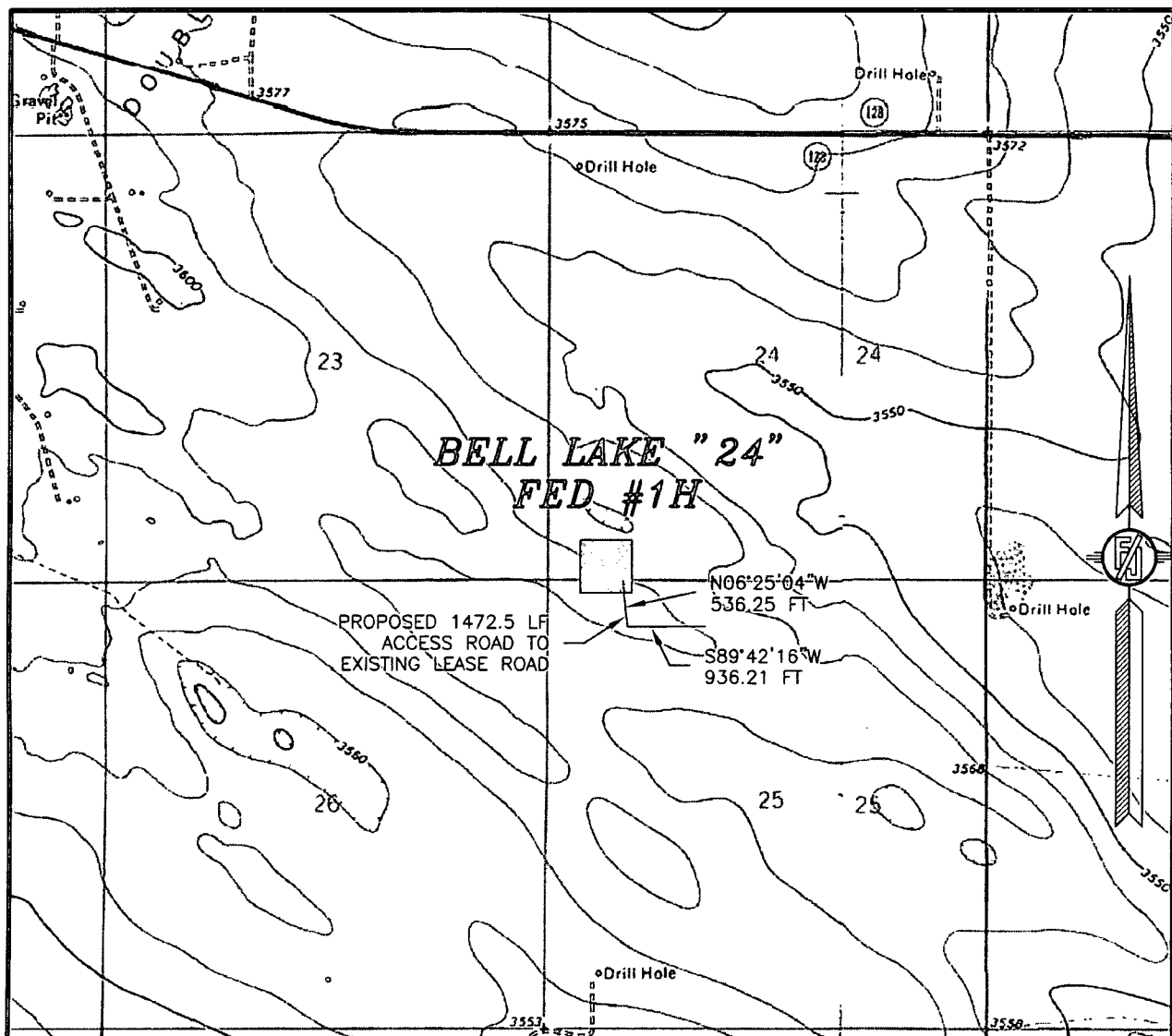
LOCATED 200 FT. FROM THE SOUTH LINE
AND 660 FT. FROM THE WEST LINE OF
SECTION 24, TOWNSHIP 24 SOUTH,
RANGE 32 EAST, N.M.P.M.
LEA COUNTY, STATE OF NEW MEXICO

AUGUST 22, 2013

SURVEY NO. 1383A

MADRON SURVEYING, INC. 301 SOUTH CANAL (575) 234-3341 CARLSBAD, NEW MEXICO

SECTION 24, TOWNSHIP 24 SOUTH, RANGE 32 EAST, N.M.P.M.
LEA COUNTY, STATE OF NEW MEXICO
LOCATION VERIFICATION MAP



USGS QUAD MAP:
PADUCA BREAKS NW

NOT TO SCALE

DEVON ENERGY PRODUCTION COMPANY, L.P.

BELL LAKE "24" FED #1H

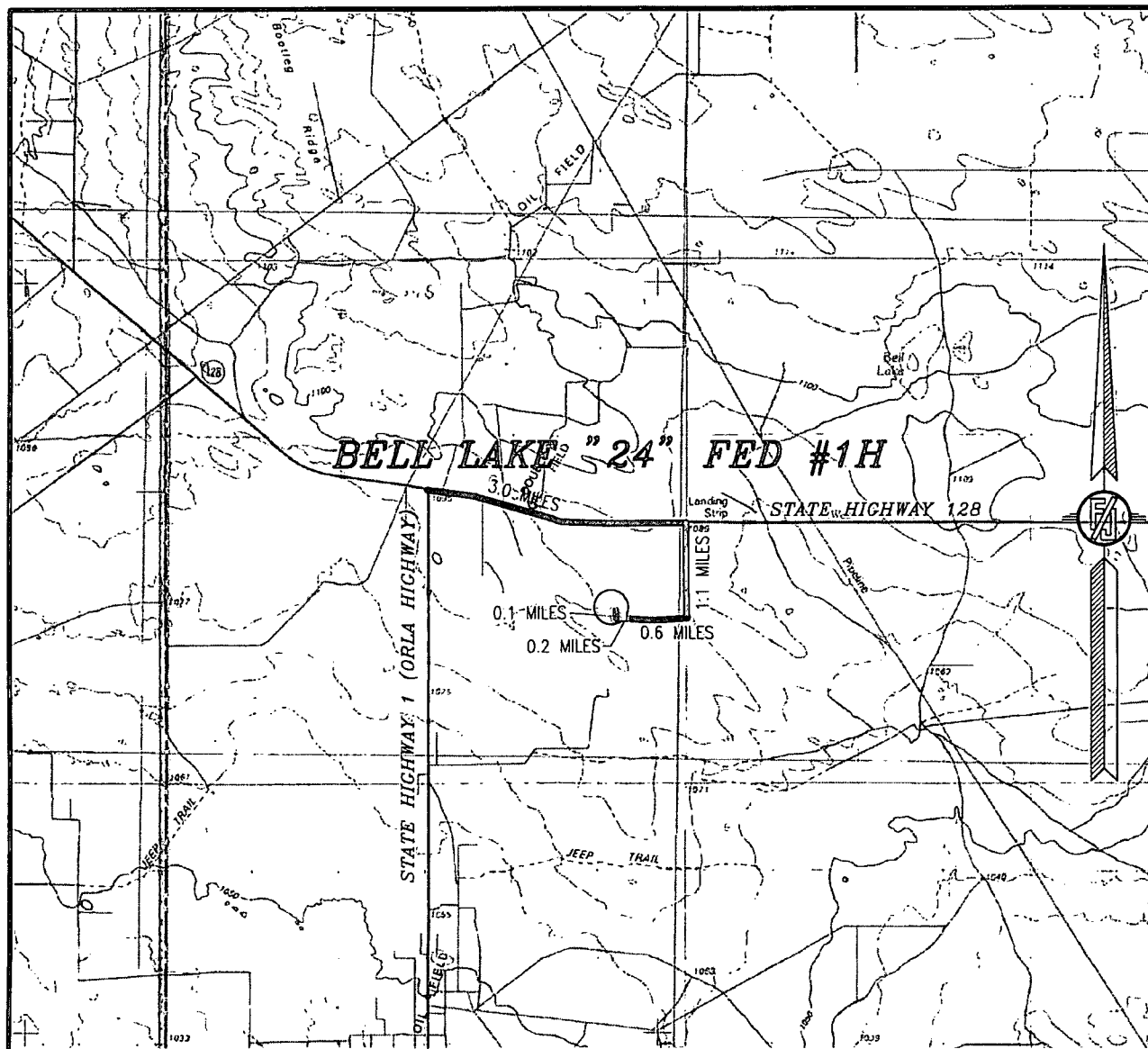
LOCATED 200 FT. FROM THE SOUTH LINE
AND 660 FT. FROM THE WEST LINE OF
SECTION 24, TOWNSHIP 24 SOUTH,
RANGE 32 EAST, N.M.P.M.
LEA COUNTY, STATE OF NEW MEXICO

AUGUST 22, 2013

SURVEY NO. 1383A

MADRON SURVEYING, INC. 301 SOUTH CANAL (575) 234-3341 CARLSBAD, NEW MEXICO

SECTION 24, TOWNSHIP 24 SOUTH, RANGE 32 EAST, N.M.P.M.
LEA COUNTY, STATE OF NEW MEXICO
VICINITY MAP



NOT TO SCALE

DEVON ENERGY PRODUCTION COMPANY, L.P.

BELL LAKE "24" FED #1H

LOCATED 200 FT. FROM THE SOUTH LINE
AND 660 FT. FROM THE WEST LINE OF
SECTION 24, TOWNSHIP 24 SOUTH,
RANGE 32 EAST, N.M.P.M.
LEA COUNTY, STATE OF NEW MEXICO

AUGUST 22, 2013

DIRECTIONS TO LOCATION

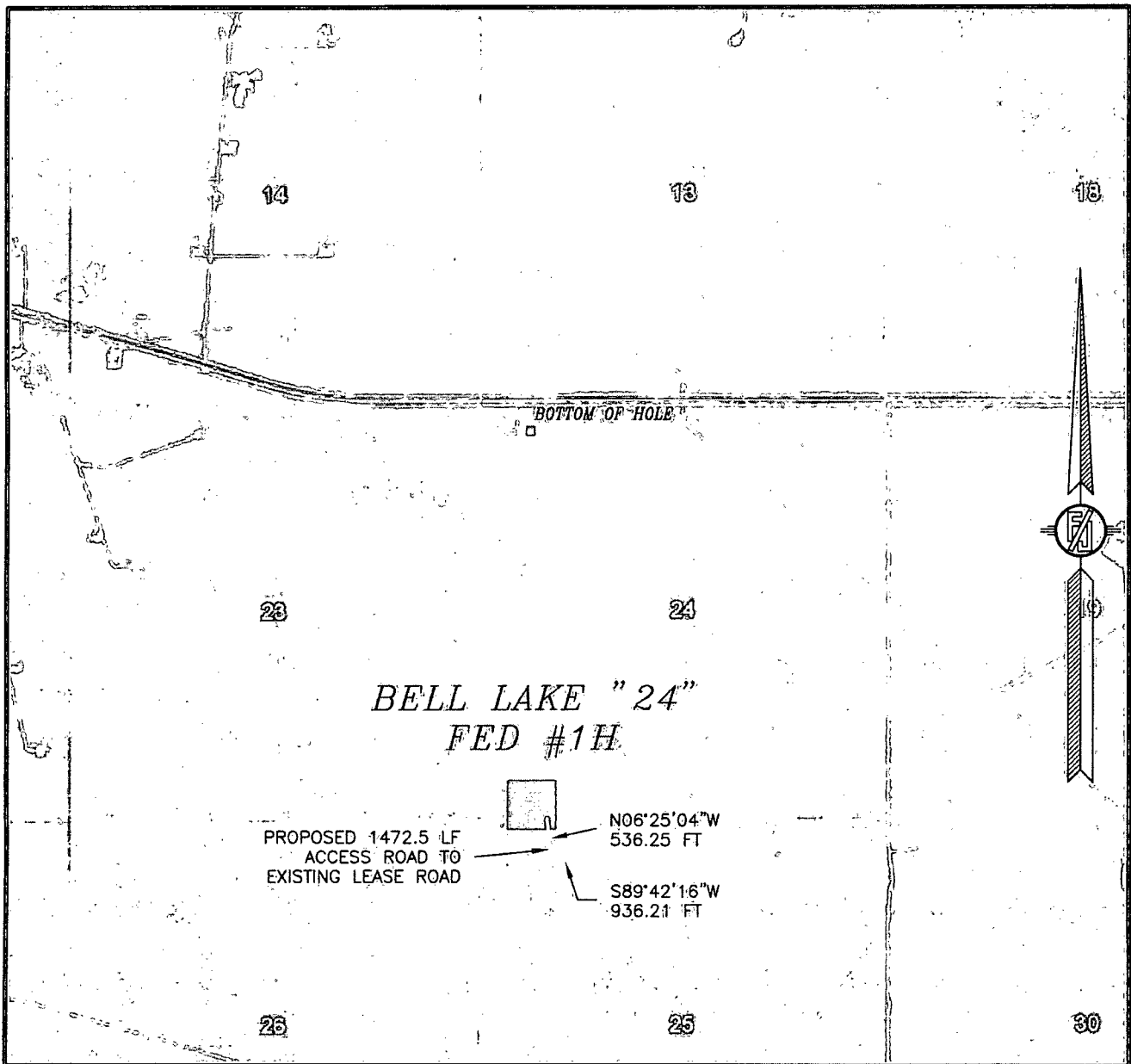
FROM INTERSECTION OF STATE HIGHWAY 128 AND STATE HIGHWAY 1 (ORLA HIGHWAY) GO APPROX. 3.0 MILES TO THE EAST ON STATE HIGHWAY 128 TO A LEASE ROAD ON RIGHT (SOUTH) OF STATE HIGHWAY 128, TURN RIGHT (SOUTH) ON LEASE ROAD GO APPROX. 1.1 MILES TO A CATTLE GUARD ON RIGHT (WEST), TURN RIGHT (WEST) GO APPROX. 0.6 OF A MILE TO EXISTING PAD AT SOUTHWEST CORNER OF PAD IS A LATH WITH RED AND WHITE FLAGGING MARKER BEGINNING PROPOSED ROAD. FOLLOW LATHS (WEST) APPROX. 0.2 OF A MILE, TURN RIGHT (NORTH) GO APPROX. 0.1 OF A MILE TO LOCATION.

SURVEY NO. 1383A

MADRON SURVEYING, INC. 301 SOUTH CANAL (575) 234-3341

CARLSBAD, NEW MEXICO

SECTION 24, TOWNSHIP 24 SOUTH, RANGE 32 EAST, N.M.P.M.
LEA COUNTY, STATE OF NEW MEXICO
AERIAL PHOTO



NOT TO SCALE
AERIAL PHOTO:
GOOGLE EARTH
MARCH 2012

DEVON ENERGY PRODUCTION COMPANY, L.P.

BELL LAKE "24" FED #1H

LOCATED 200 FT. FROM THE SOUTH LINE
AND 660 FT. FROM THE WEST LINE OF
SECTION 24, TOWNSHIP 24 SOUTH,
RANGE 32 EAST, N.M.P.M.
LEA COUNTY, STATE OF NEW MEXICO

AUGUST 22, 2013

SURVEY NO. 1383A

MADRON SURVEYING, INC. 301 SOUTH CANAL (575) 234-3341 CARLSBAD, NEW MEXICO