

DISTRICT I  
1825 N. FRENCH DR., HOBBS, NM 88240  
Phone: (505) 393-6161 Fax: (505) 393-0720

DISTRICT II  
1301 W. GRAND AVENUE, ARTESIA, NM 88210  
Phone: (505) 748-1283 Fax: (505) 748-9720

DISTRICT III  
1000 RIO BRAZOS RD., AZTEC, NM 87410  
Phone: (505) 334-6178 Fax: (505) 334-6170

DISTRICT IV  
11885 S. ST. FRANCIS DR., SANTA FE, NM 87505  
Phone: (505) 476-3460 Fax: (505) 476-3462

HOBBS OGD  
SEP 17 2013

RECEIVED

State of New Mexico  
Energy, Minerals & Natural Resources Department  
**OIL CONSERVATION DIVISION**  
11885 SOUTH ST. FRANCIS DR.  
Santa Fe, New Mexico 87505

Form C-102  
Revised August 1, 2011  
Submit one copy to appropriate

☐ AMENDED REPORT

**WELL LOCATION AND ACREAGE DEDICATION PLAT**

|                                    |   |   |
|------------------------------------|---|---|
| API Number<br>30-025- <b>41408</b> | Pool Code<br><b>97899</b>                   | Pool Name<br><b>WC-025 G-06 5253206M; BONE SPRING</b> |
| Property Code<br><b>40133</b>      | Property Name<br><b>WINDWARD FEDERAL</b>    | Well Number<br><b>2H</b>                              |
| OGRID No.<br>217955                | Operator Name<br><b>COG PRODUCTION, LLC</b> | Elevation<br><b>3543.9</b>                            |

**Surface Location**

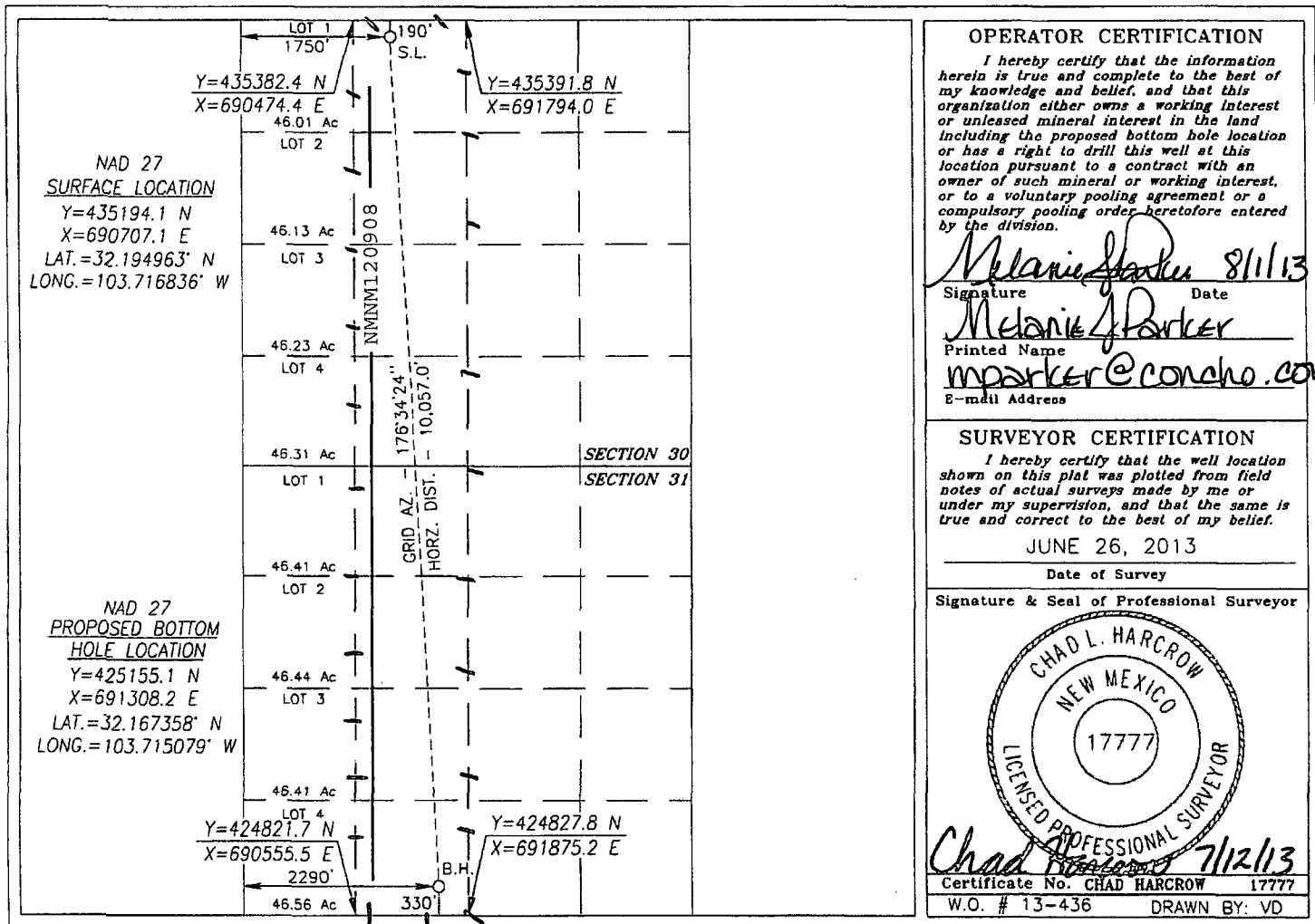
| UL or lot No. | Section | Township | Range | Lot Idn | Feet from the | North/South line | Feet from the | East/West line | County |
|---------------|---------|----------|-------|---------|---------------|------------------|---------------|----------------|--------|
| C             | 30      | 24-S     | 32-E  |         | 190           | NORTH            | 1750          | WEST           | LEA    |

**Bottom Hole Location If Different From Surface**

| UL or lot No. | Section | Township | Range | Lot Idn | Feet from the | North/South line | Feet from the | East/West line | County |
|---------------|---------|----------|-------|---------|---------------|------------------|---------------|----------------|--------|
| N             | 31      | 24-S     | 32-E  |         | 330           | SOUTH            | 2290          | WEST           | LEA    |

| Dedicated Acres | Joint or Infill | Consolidation Code | Order No. |
|-----------------|-----------------|--------------------|-----------|
| 320             |                 |                    |           |

NO ALLOWABLE WILL BE ASSIGNED TO THIS COMPLETION UNTIL ALL INTERESTS HAVE BEEN CONSOLIDATED  
OR A NON-STANDARD UNIT HAS BEEN APPROVED BY THE DIVISION



SEP 19 2013

PM