

DISTRICT I
1625 N. French Dr., Hobbs, NM 88240
Phone (575) 393-6181 Fax: (575) 393-0720

DISTRICT II
1301 W. Grand Avenue, Artesia, NM 88210
Phone (575) 748-1283 Fax: (575) 748-9720

DISTRICT III
1000 Rio Brazos Rd., Aztec, NM 87410
Phone (505) 334-6178 Fax: (505) 334-6170

DISTRICT IV
1220 S. St. Francis Dr., Santa Fe, NM 87505
Phone (505) 476-3460 Fax: (505) 476-3462

HOBBS OCD

State of New Mexico
Energy, Minerals and Natural Resources Department

Form C-102
Revised August 1, 2011

Submit one copy to appropriate
District Office

SEP 12 2013

CONSERVATION DIVISION
1220 South St. Francis Dr.
Santa Fe, New Mexico 87505

RECEIVED

☐ AMENDED REPORT

WELL LOCATION AND ACREAGE DEDICATION PLAT

API Number 30-025-41121	Pool Code 5535	Pool Name Berry; Bone Spring, North
Property Code 39273	Property Name BELFAST BSL STATE COM	Well Number 1Y
OGRID No. 025575	Operator Name YATES PETROLEUM CORP.	Elevation 3740'

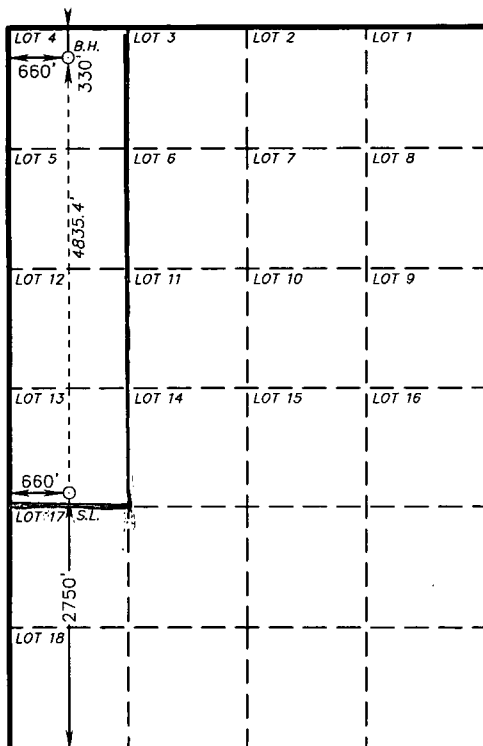
Surface Location

UL or lot No.	Section	Township	Range	Lot Idn	Feet from the	North/South line	Feet from the	East/West line	County
LOT 13	6	21 S	34 E		2750	SOUTH	660	WEST	LEA

Bottom Hole Location If Different From Surface

UL or lot No.	Section	Township	Range	Lot Idn	Feet from the	North/South line	Feet from the	East/West line	County
LOT 4	6	21 S	34 E		330 7585	NORTHS	673 637	WEST	LEA
Dedicated Acres 160	Joint or Infill	Consolidation Code	Order No.						

NO ALLOWABLE WILL BE ASSIGNED TO THIS COMPLETION UNTIL ALL INTERESTS HAVE BEEN CONSOLIDATED
OR A NON-STANDARD UNIT HAS BEEN APPROVED BY THE DIVISION



**PROPOSED BOTTOM
HOLE LOCATION**
Lat - N 32°31'17.16"
Long - W 103°30'55.51"
NMSPCE- N 554395.373
E 793438.934
(NAD-83)

SURFACE LOCATION
Lat - N 32°30'29.32"
Long - W 103°30'55.52"
NMSPCE- N 549561.089
E 793475.603
(NAD-83)

OPERATOR CERTIFICATION

I hereby certify that the information contained herein is true and complete to the best of my knowledge and belief, and that this organization either owns a working interest or unleased mineral interest in the land including the proposed bottom hole location or has a right to drill this well at this location pursuant to a contract with an owner of such a mineral or working interest, or to a voluntary pooling agreement or a compulsory pooling order heretofore entered by the division.

Laura Watts 9/10/13
Signature Date

Laura Watts
Printed Name
laura@yatespetroleum.com
Email Address

SURVEYOR CERTIFICATION

I hereby certify that the well location shown on this plat was plotted from field notes of actual surveys made by me or under my supervision and that the same is true and correct to the best of my belief.

GARY L. JONES
Date Surveyed
Signature & Seal of Professional Surveyor
26614

Certificate No. Gary L. Jones 7977

BASIN SURVEYS 26614

OCT 07 2013