

HOBBS OCD

OCT 17 2013

DISTRICT I
1625 N. French Dr., Hobbs, NM 88240
Phone: (505) 393-6161 Fax: (505) 393-0720

DISTRICT II
811 S. First St., Artesia, NM 88210
Phone: (505) 748-1283 Fax: (505) 748-9720

DISTRICT III
1000 Rio Brazos Road, Aztec, NM 87410
Phone: (505) 334-6178 Fax: (505) 334-6170

DISTRICT IV
1220 S. St. Francis Dr., Santa Fe, NM 87505
Phone: (505) 476-3460 Fax: (505) 476-3462

State of New Mexico
Energy, Minerals & Natural Resources Department
OIL CONSERVATION DIVISION
1220 South St. Francis Dr.
Santa Fe, New Mexico 87505

Form C-102
Revised August 1, 2011
Submit one copy to appropriate
District Office

AMENDED REPORT

WELL LOCATION AND ACREAGE DEDICATION PLAT

API Number 30-025-41435	Pool Code 62700	Pool Name Wantz (Abo)
Property Code 23112	Property Name SOUTHLAND ROYALTY	Well Number 2H
OGRID No. 873	Operator Name APACHE CORPORATION	Elevation 3465'

Surface Location

UL or lot No.	Section	Township	Range	Lot Idn	Feet from the	North/South line	Feet from the	East/West line	County
H	9	21-S	37-E		2310	NORTH	640	EAST	LEA

Bottom Hole Location If Different From Surface

UL or lot No.	Section	Township	Range	Lot Idn	Feet from the	North/South line	Feet from the	East/West line	County
I	4	21-S	37-E		2310	SOUTH	660	EAST	LEA

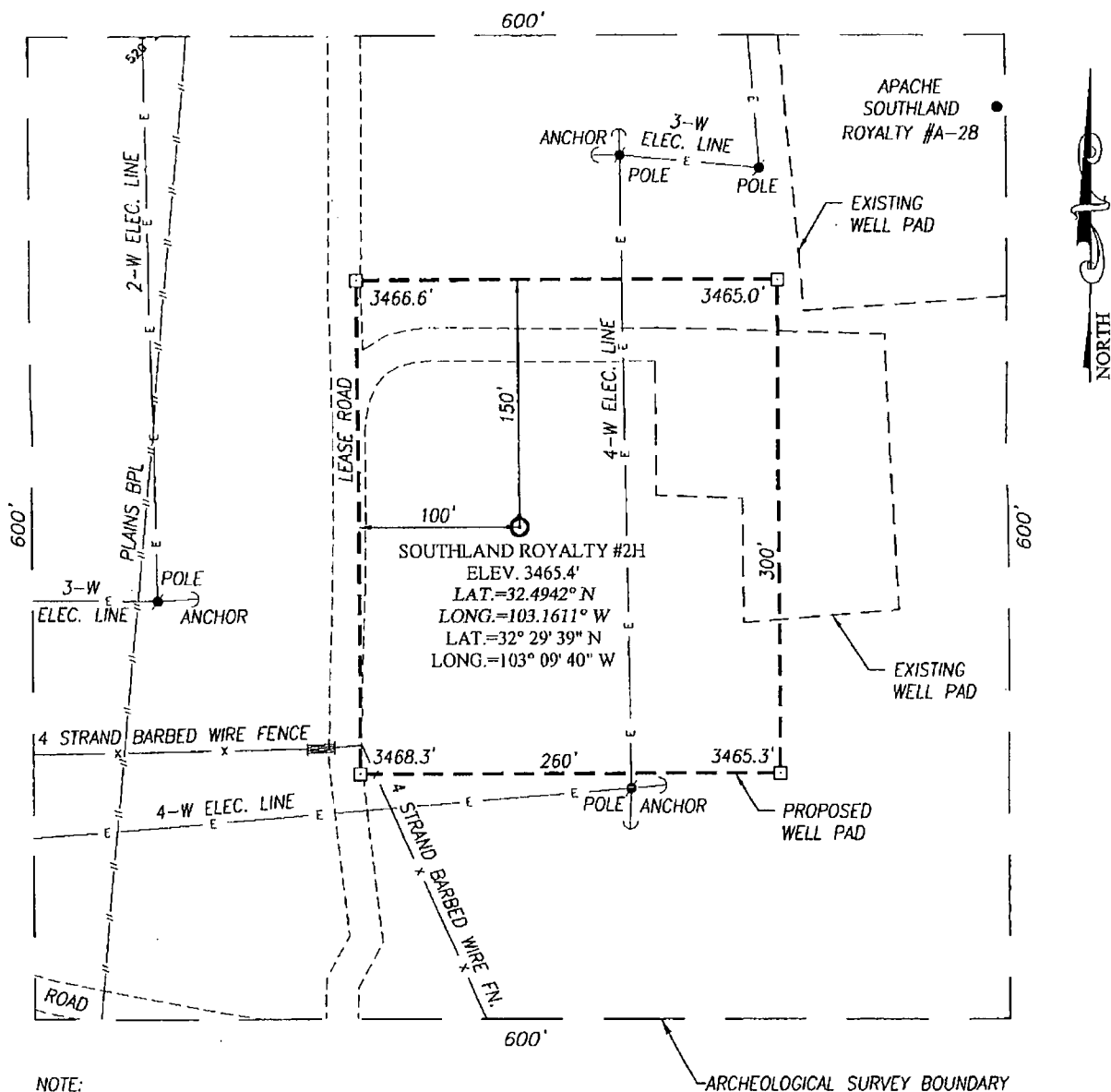
Dedicated Acres	Joint or Infill	Consolidation Code	Order No.

NO ALLOWABLE WILL BE ASSIGNED TO THIS COMPLETION UNTIL ALL INTERESTS HAVE BEEN CONSOLIDATED OR A NON-STANDARD UNIT HAS BEEN APPROVED BY THE DIVISION

<p>CORNER COORDINATES TABLE</p> <p>A - Y=550436.8 N, X=860710.7 E B - Y=550449.5 N, X=862030.5 E C - Y=547809.6 N, X=862060.6 E D - Y=547797.2 N, X=860741.4 E E - Y=545156.1 N, X=860771.5 E F - Y=545169.0 N, X=862091.6 E</p>		<p>OPERATOR CERTIFICATION</p> <p>I hereby certify that the information herein is true and complete to the best of my knowledge and belief, and that this organization either owns a working interest or unleased mineral interest in the land including the proposed bottom hole location or has a right to drill this well at this location pursuant to a contract with an owner of such mineral or working interest, or to a voluntary pooling agreement or a compulsory pooling order heretofore entered by the division.</p> <p><i>Michelle Cooper</i> 7-30-13 Signature Date <i>Michelle Cooper</i> Printed Name <i>michelle.cooper@apachecorp.com</i> E-mail Address</p>
<p>SECTION 4 SECTION 9</p> <p>GEODETIC COORDINATES NAD 27 NME</p> <p>SURFACE LOCATION Y=545494.0 N X=861447.8 E LAT.=32.4942° N LONG.=103.1611° W LAT.=32° 29' 39" N LONG.=103° 09' 40" W</p> <p>BOTTOM HOLE LOCATION Y=550113.0 N X=861374.4 E LAT.=32° 30' 25" N LONG.=103° 09' 40" W</p> <p>32.506944 103.16111</p>		<p>SURVEYOR CERTIFICATION</p> <p>I hereby certify that the well location shown on this plat was plotted from field notes of actual surveys made by me or under my supervision, and that the same is true and correct to the best of my belief.</p> <p>JUNE 27, 2013 Date of Survey <i>Ronald J. Eidson</i> Signature Registered Professional Surveyor Certificate Number 3239 Date 6/16/2013 BK1 JWSC W.O.: 13.11.0733</p>

OCT 22 2013

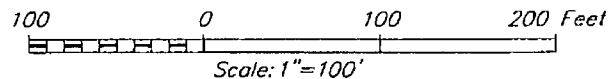
SECTION 9, TOWNSHIP 21 SOUTH, RANGE 37 EAST, N.M.P.M.
LEA COUNTY NEW MEXICO



NOTE:
SEE "LOCATION VERIFICATION MAP"
FOR PROPOSED ROAD LOCATION.

DIRECTIONS TO LOCATION:

FROM THE INTERSECTION OF HILL RD. AND ST. HWY. 207 GO
NORTH APPROX. 0.7 MILES; TURN LEFT AND GO WEST APPROX.
0.1 MILES. TURN RIGHT AND GO NORTH 300 FEET. THE LOCATION
STAKE IS 100 FEET EAST.

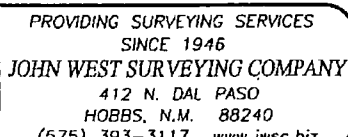


APACHE CORPORATION

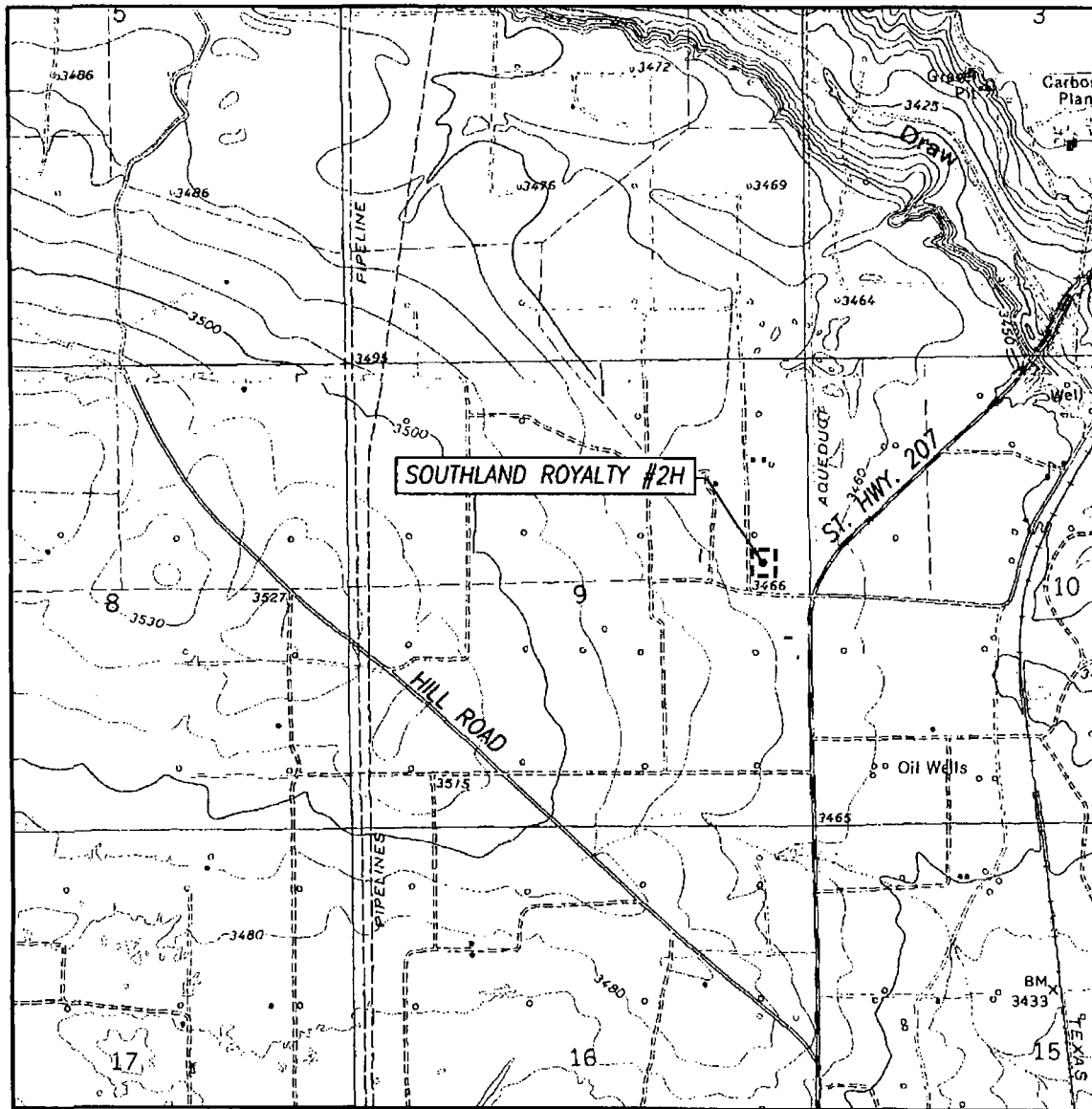
SOUTHLAND ROYALTY #2H WELL
LOCATED 2310 FEET FROM THE NORTH LINE
AND 640 FEET FROM THE EAST LINE OF SECTION 9,
TOWNSHIP 21 SOUTH, RANGE 37 EAST, N.M.P.M.,
LEA COUNTY, NEW MEXICO

Drawn By: BKL

Sheet 1 of 1



LOCATION VERIFICATION MAP



SCALE: 1" = 2000'

CONTOUR INTERVAL:
EUNICE, N.M. - 10'
HOBBS S.W., N.M. - 5'

SEC. 9 TWP. 21-S RGE. 37-E

SURVEY N.M.P.M.

COUNTY LEA STATE NEW MEXICO

DESCRIPTION 2310' FNL & 640' FEL

ELEVATION 3465'

OPERATOR APACHE CORPORATION

LEASE SOUTHLAND ROYALTY

U.S.G.S. TOPOGRAPHIC MAP
EUNICE, N.M.

