

DISTRICT I  
1825 N. French Dr., Hobbs, NM 88240  
Phone (575) 393-6161 Fax: (575) 393-0720

DISTRICT II  
811 S. First St., Artesia, NM 88210  
Phone (575) 748-1283 Fax: (575) 748-0720

DISTRICT III  
1000 Rio Brazos Rd., Aztec, NM 87410  
Phone (505) 334-6178 Fax: (505) 334-6170

DISTRICT IV  
1220 S. St. Francis Dr., Santa Fe, NM 87505  
Phone (505) 478-3480 Fax: (505) 478-3482

State of New Mexico  
Energy, Minerals and Natural Resources Department

Form C-102  
Revised August 1, 2011  
Submit one copy to appropriate  
District Office

OIL CONSERVATION DIVISION

1220 South St. Francis Dr.  
Santa Fe, New Mexico 87505

WELL LOCATION AND ACREAGE DEDICATION PLAT

☐ AMENDED REPORT

API Number <b>30-025-41042</b>	Pool Code <b>23000</b>	Pool Name <b>Eunice Monument; Grayburg-San Andres</b>
Property Code <b>302708</b>	Property Name <b>NMGSAU</b>	Well Number <b>389</b>
OGRID No. <b>873</b>	Operator Name <b>APACHE CORPORATION</b>	Elevation <b>3647</b>

Surface Location

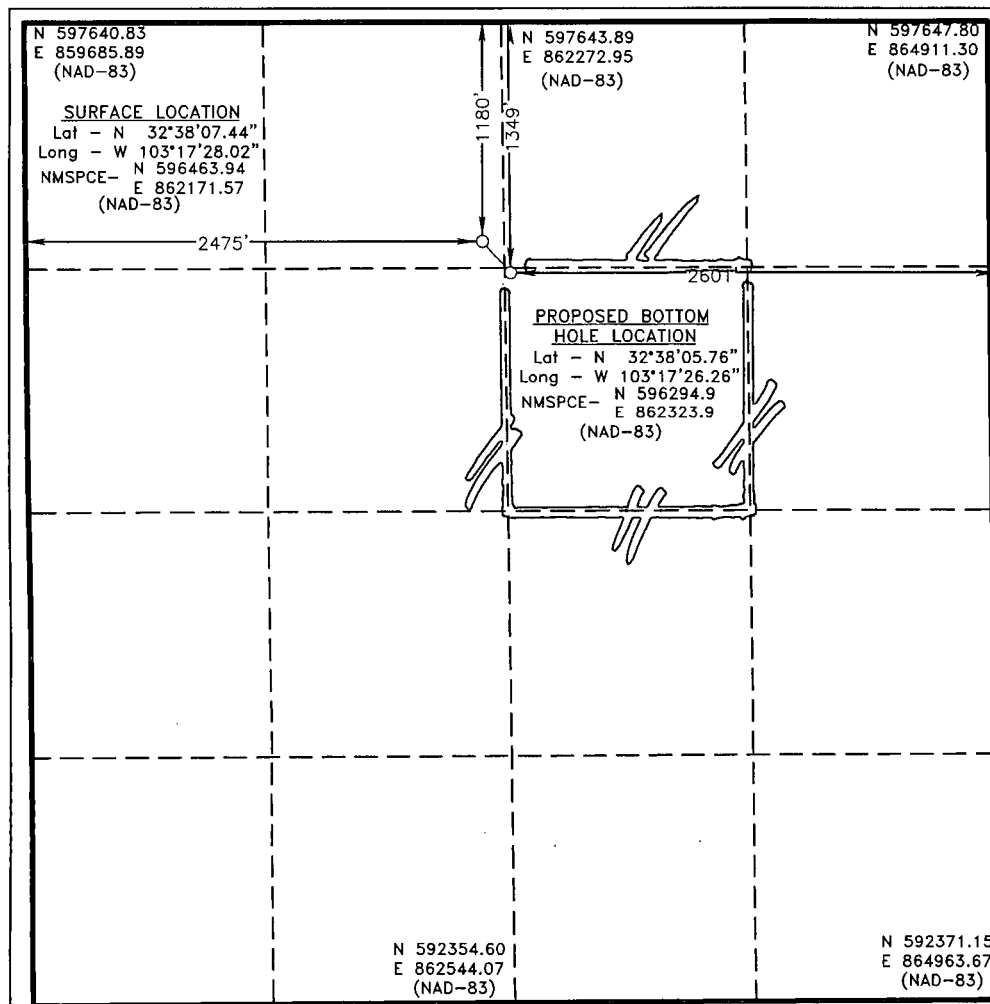
UL or lot No.	Section	Township	Range	Lot Idn	Feet from the	North/South line	Feet from the	East/West line	County
C	30	19 S	37 E		1180	NORTH	2475	WEST	LEA

Bottom Hole Location If Different From Surface

UL or lot No.	Section	Township	Range	Lot Idn	Feet from the	North/South line	Feet from the	East/West line	County
G	30	19 S	37 E		1349	NORTH	2601	EAST	LEA

Dedicated Acres	Joint or Infill	Consolidation Code	Order No.
<b>4/6</b>			

NO ALLOWABLE WILL BE ASSIGNED TO THIS COMPLETION UNTIL ALL INTERESTS HAVE BEEN CONSOLIDATED  
OR A NON-STANDARD UNIT HAS BEEN APPROVED BY THE DIVISION



OPERATOR CERTIFICATION

I hereby certify that the information contained herein is true and complete to the best of my knowledge and belief, and that this organization either owns a working interest or unleased mineral interest in the land including the proposed bottom hole location or has a right to drill this well at this location pursuant to a contract with an owner of such a mineral or working interest, or to a voluntary pooling agreement or a compulsory pooling order heretofore entered by the division.

**Signature** *[Signature]* **Date** **9-26-2013**  
**Printed Name** **Michael D Connor**  
**Email Address** **michael.dconnor@apachecorp.com**

SURVEYOR CERTIFICATION

I hereby certify that the well location shown on this plat was plotted from field notes of actual surveys made by me or under my supervision, and that the same is true and correct to the best of my belief.

**Date Surveyed** **FEBRUARY 1, 2013**  
**Signature & Seal of Professional Surveyor** *[Signature]*  
**Certificate No.** **Gary L. Jones 7977**  
**BASIN SURVEYS** **28206**

OCT 24 2013

HOEBS OGD

## DISTRICT I

1025 N. French Dr., Hobbs, NM 88240  
Phone (505) 393-6161 Fax: (505) 393-0720

## DISTRICT II

811 S. First St., Artesia, NM 88210  
Phone (505) 748-1283 Fax: (505) 748-9720

## DISTRICT III

1000 Rio Brazos Rd., Aztec, NM 87410  
Phone (505) 334-0178 Fax: (505) 334-0170

## DISTRICT IV

1220 S. St. Francis Dr., Santa Fe, NM 87505  
Phone (505) 478-3450 Fax: (505) 478-3458State of New Mexico  
Energy, Minerals and Natural Resources Department

## OIL CONSERVATION DIVISION

1220 South St. Francis Dr.  
Santa Fe, New Mexico 87505Form 6-102  
Revised August 11, 2011Submit one copy to appropriate  
District Office

RECEIVED

## WELL LOCATION AND ACREAGE DEDICATION PLAT

☐ AMENDED REPORT

API Number <b>30-025-41042</b>	Pool Code <b>23000</b>	Pool Name <i>Eunice Monument: Grayburg San Andres</i>
Property Code <b>302708</b>	Property Name <b>NMGSAU</b>	Well Number <b>389</b>
OGRID No. <b>873</b>	Operator Name <b>APACHE CORPORATION</b>	Elevation <b>3647</b>

## Surface Location

UL or lot No.	Section	Township	Range	Lot Idn	Feet from the	North/South line	Feet from the	East/West line	County
C	30	19 S	37 E		1180	NORTH	2475	WEST	LEA

## Bottom Hole Location If Different From Surface

UL or lot No.	Section	Township	Range	Lot Idn	Feet from the	North/South line	Feet from the	East/West line	County
G	30	19 S	37 E		1330	NORTH	2630	EAST	LEA

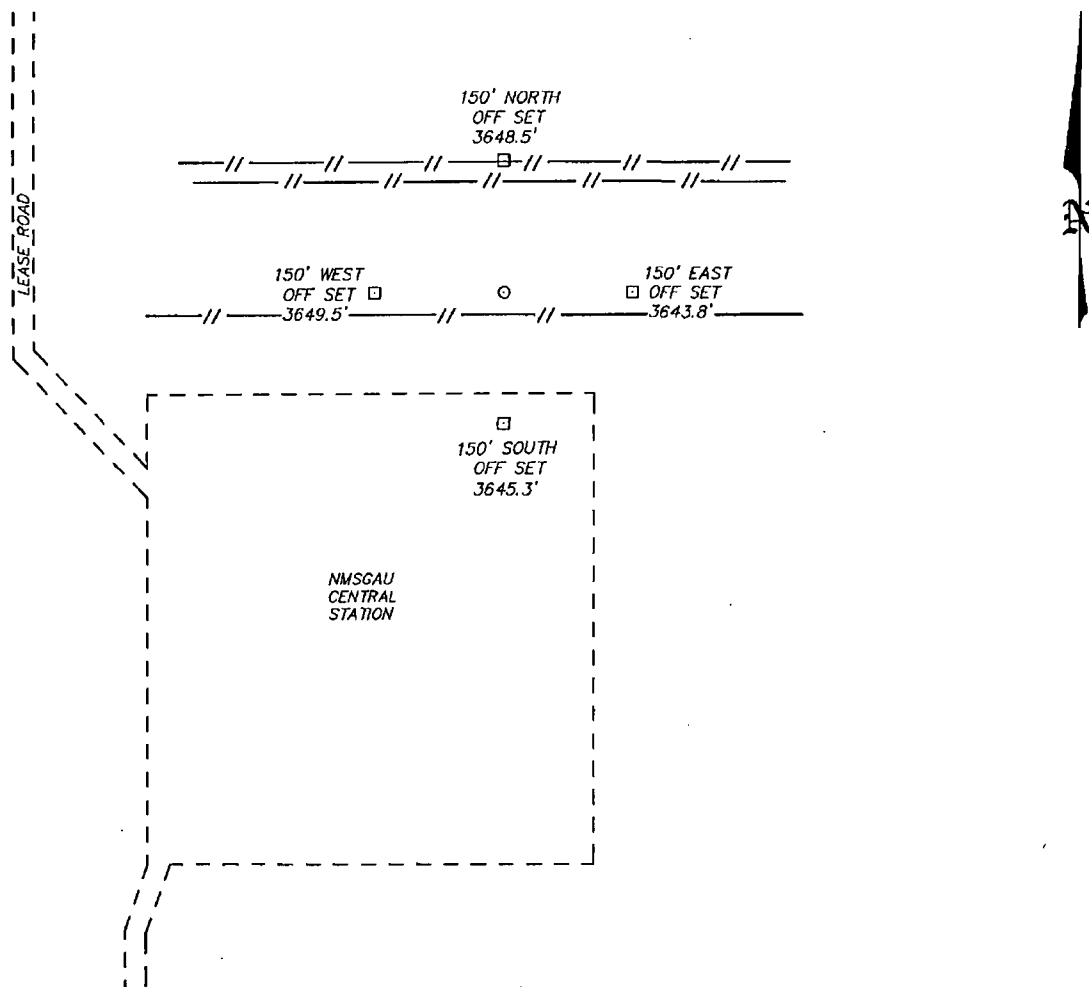
Dedicated Acres <b>40</b>	Joint or Infill	Consolidation Code	Order No.
------------------------------	-----------------	--------------------	-----------

NO ALLOWABLE WILL BE ASSIGNED TO THIS COMPLETION UNTIL ALL INTERESTS HAVE BEEN CONSOLIDATED  
OR A NON-STANDARD UNIT HAS BEEN APPROVED BY THE DIVISION

N 597640.83 E 859685.89 (NAD-83)  <b>SURFACE LOCATION</b> Lot - N 32°38'07.44" Long - W 103°17'28.02" NMSPCE- N 596463.94 E 862171.57 (NAD-83)	N 597643.89 E 862272.95 (NAD-83)	N 597647.80 E 864911.30 (NAD-83)	<b>OPERATOR CERTIFICATION</b> I hereby certify that the information contained herein is true and complete to the best of my knowledge and belief, and that this organization either owns a working interest or unleased mineral interest in the land including the proposed bottom hole location or has a right to drill this well at this location pursuant to a contract with an owner of such a mineral or working interest, or to a voluntary pooling agreement or a compulsory pooling order heretofore entered by the division. <i>Vicki Brown</i> 2/27/13 Signature _____ Date _____ Printed Name <b>Vicki Brown</b> Email Address <i>vicki.brown@apache corp. com</i>
<b>PROPOSED BOTTOM HOLE LOCATION</b> Lot - N 32°38'05.95" Long - W 103°17'26.59" NMSPCE- N 596314.16 E 862294.87 (NAD-83)			
N 592354.60 E 862544.07 (NAD-83)		N 592371.15 E 864963.67 (NAD-83)	<b>SURVEYOR CERTIFICATION</b> I hereby certify that the well location shown on this plat was plotted from field notes of actual surveys made by me or under my supervision, and that the same is true and correct to the best of my belief. FEB 14 2013 Date Surveyed _____ Signature & Seal of Professional Surveyor Certificate No. Gary L. Jones 7977 BASIN SURVEYS 28206

SECTION 30, TOWNSHIP 19 SOUTH, RANGE 37 EAST, N.M.P.M.,  
LEA COUNTY, NEW MEXICO.

APACHE CORPORATION  
NMGSAU #389  
ELEV. - 3647  
SURFACE LOCATION  
Lat - N 32°38'07.44"  
Long - W 103°17'28.02"  
NMSPCE- N 596463.94  
E 862171.57  
(NAD-83)



DRIVING DIRECTIONS

FROM MADDOX AND PEARL VALLEY GO EAST .5 MILES TURN NORTH GO .5 MILES TO PROPOSED LOCATION.

200 0 200 400 FEET  
SCALE: 1" = 200'

**APACHE CORPORATION**

REF: NMGSAU #389 / WELL PAD TOPO

THE NMGSAU #389 LOCATED 1180'

FROM THE NORTH LINE AND 2475' FROM THE WEST LINE OF  
SECTION 30, TOWNSHIP 19 SOUTH, RANGE 37 EAST,

N.M.P.M., LEA COUNTY, NEW MEXICO.

**BASIN SURVEYS** P.O. BOX 1786 - HOBBS, NEW MEXICO

W.O. Number: 28206 Drawn By: D. JONES

Date: 02-20-2013 Disk: DAJ 28206

Survey Date: 02-18-2013

Sheet 1 of 1 Sheets