

District I  
1625 N. French Dr., Hobbs, NM 88240  
Phone: (575) 393-6161 Fax: (575) 393-0720  
District II  
811 S. First St., Artesia, NM 88210  
Phone: (575) 748-1283 Fax: (575) 748-9720  
District III  
1000 Rio Brazos Road, Aztec, NM 87410  
Phone: (505) 334-6178 Fax: (505) 334-6170  
District IV  
1220 S. St. Francis Dr., Santa Fe, NM 87505  
Phone: (505) 476-3460 Fax: (505) 476-3462

**HOBBS OCD** State of New Mexico  
Energy, Minerals & Natural Resources Department  
**OCT 23 2013** OIL CONSERVATION DIVISION  
1220 South St. Francis Dr.  
Santa Fe, NM 87505  
**RECEIVED**

Form C-102  
Revised August 1, 2011  
Submit one copy to appropriate  
District Office

☐ AMENDED REPORT

**WELL LOCATION AND ACREAGE DEDICATION PLAT**

API Number <b>30-025-41462</b>	Pool Code <b>96674</b>	Pool Name <b>Triplex Bone Spring, West</b>
Property Code <b>30 5098</b>	Property Name <b>COPPERHEAD "18" STATE</b>	Well Number <b>4H</b>
OGRID No. <b>16696</b>	Operator Name <b>OXY USA INC.</b>	Elevation <b>3570.0'</b>

**Surface Location**

UL or lot no.	Section	Township	Range	Lot Idn	Feet from the	North/South line	Feet from the	East/West line	County
<b>B</b>	<b>18</b>	<b>24 SOUTH</b>	<b>33 EAST, N.M.P.M.</b>		<b>340'</b>	<b>NORTH</b>	<b>1980'</b>	<b>EAST</b>	<b>LEA</b>

**Bottom Hole Location If Different From Surface**

UL or lot no.	Section	Township	Range	Lot Idn	Feet from the	North/South line	Feet from the	East/West line	County
<b>0</b>	<b>18</b>	<b>24 SOUTH</b>	<b>33 EAST, N.M.P.M.</b>		<b>340'</b>	<b>SOUTH</b>	<b>1980'</b>	<b>EAST</b>	<b>LEA</b>
Dedicated Acres <b>1.60</b>		Joint or Infill <b>N</b>	Consolidation Code	Order No.					

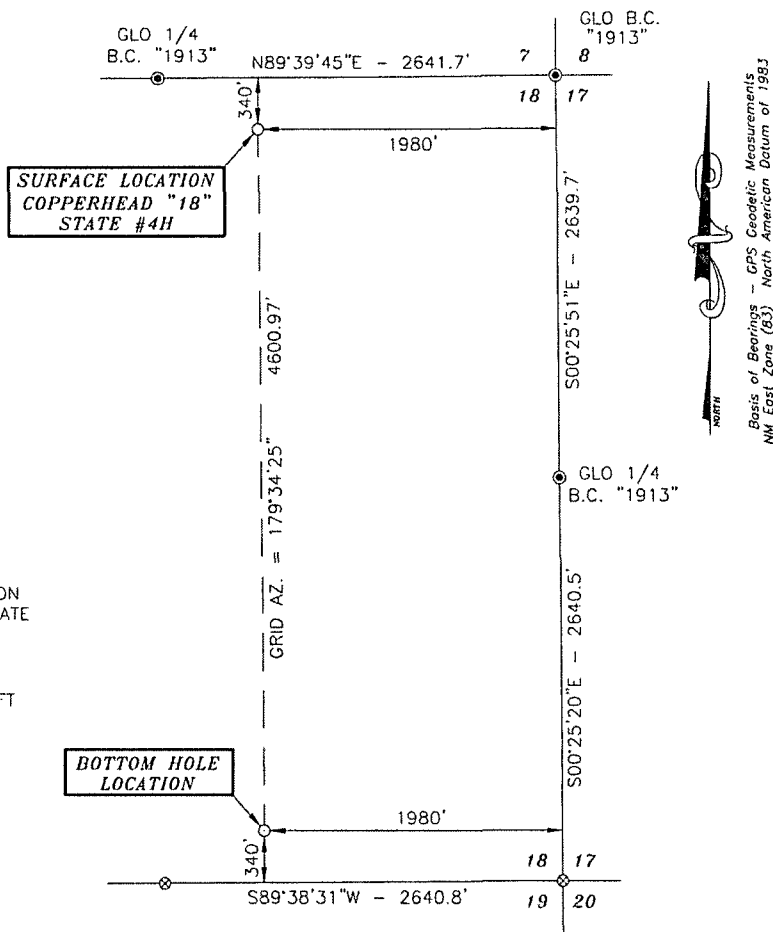
No allowable will be assigned to this completion until all interests have been consolidated or a non-standard unit has been approved by the division.

<p><b>SURFACE LOCATION</b> NEW MEXICO EAST NAD 1927 Y=445923.3 X=724053.6 LAT.: N 32.2238836° LONG.: W 103.6088098°</p> <p><b>BOTTOM HOLE LOCATION</b> NEW MEXICO EAST NAD 1927 Y=441322.6 X=724087.7 LAT.: N 32.2112366° LONG.: W 103.6088000°</p> <p>GRID AZ = 179°34'25"</p> <p>PRODUCING AREA PROJECT AREA</p>	<p><b>OPERATOR CERTIFICATION</b></p> <p>I hereby certify that the information contained herein is true and complete to the best of my knowledge and belief, and that this organization either owns a working interest or unleased mineral interest in the land including the proposed bottom hole location or has a right to drill this well at this location pursuant to a contract with an owner of such a mineral or working interest, or to a voluntary pooling agreement or a compulsory pooling order heretofore entered by the division.</p> <p><i>David Stewart</i> 10/17/13 Signature Date <b>David Stewart Sp. Reg. Adv.</b> Printed Name <b>david.stewart@oxy.com</b> E-mail Address</p>
	<p><b>SURVEYOR CERTIFICATION</b></p> <p>I hereby certify that the well location shown on this plat was plotted from field notes and surveys made by me or under my supervision and that the same is true and correct to the best of my belief.</p> <p><b>ERRY JAG</b> 15079 AUGUST 22 2013 Date of Survey Signature and Seal of Professional Surveyor <i>Terry J. Jag</i> 9/11/2013 Certificate Number 15079</p>

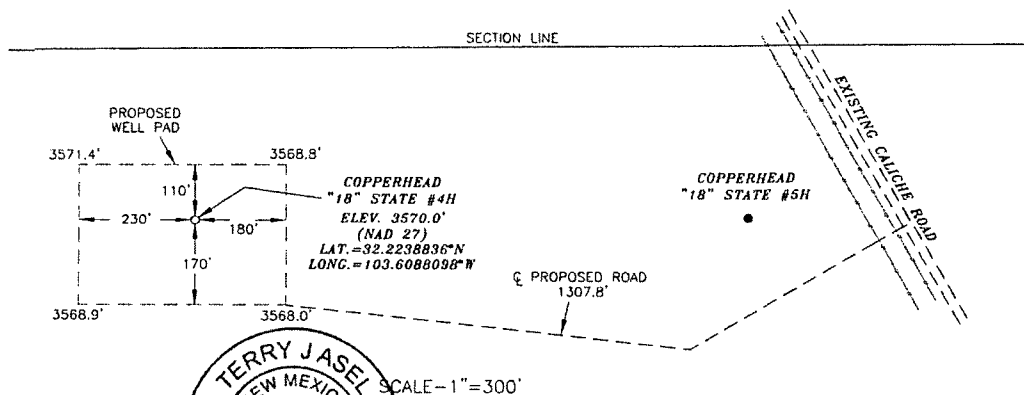
WO# 130827NL-c (Rev. A) (KA)

**OCT 30 2013**

SECTION 18, TOWNSHIP 24 SOUTH, RANGE 33 EAST, N.M.P.M.,  
LEA COUNTY, NEW MEXICO



DRIVING DIRECTIONS:  
BEGINNING IN JAL AT THE INTERSECTION  
OF N.M. STATE HWY. 18 AND N.M. STATE  
HWY. #128, GO WEST ON N.M. STATE  
HWY. #128 FOR 25.5 MILES, TURN  
RIGHT ON CALICHE ROAD AND GO  
NORTHWEST FOR 1.1 MILES, TURN LEFT  
ON PROPOSED AND GO WEST FOR  
1307.8 FEET TO LOCATION.



### SURVEYORS CERTIFICATE

I, TERRY J. ASEI, NEW MEXICO PROFESSIONAL SURVEYOR NO. 15079, DO HEREBY CERTIFY THAT I CONDUCTED AND AM RESPONSIBLE FOR THIS SURVEY, THAT THIS SURVEY IS TRUE AND CORRECT TO THE BEST OF MY KNOWLEDGE AND BELIEF, AND MEETS THE "MINIMUM STANDARDS FOR SURVEYING IN NEW MEXICO" AS ADOPTED BY THE NEW MEXICO STATE BOARD OF REGISTRATION FOR PROFESSIONAL ENGINEERS AND SURVEYORS.

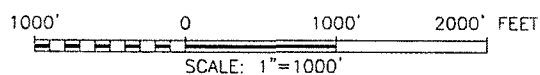
Terry J. Asel 9/11/2013  
Terry J. Asel, N.M. R.P.L.S. No. 15079

## Asel Surveying

P.O. BOX 393 - 310 W. TAYLOR  
HOBBS, NEW MEXICO - 575-393-9146

LEGEND

⊙ - DENOTES FOUND MONUMENT AS NOTED  
⊗ - DENOTES CALCULATED CORNER

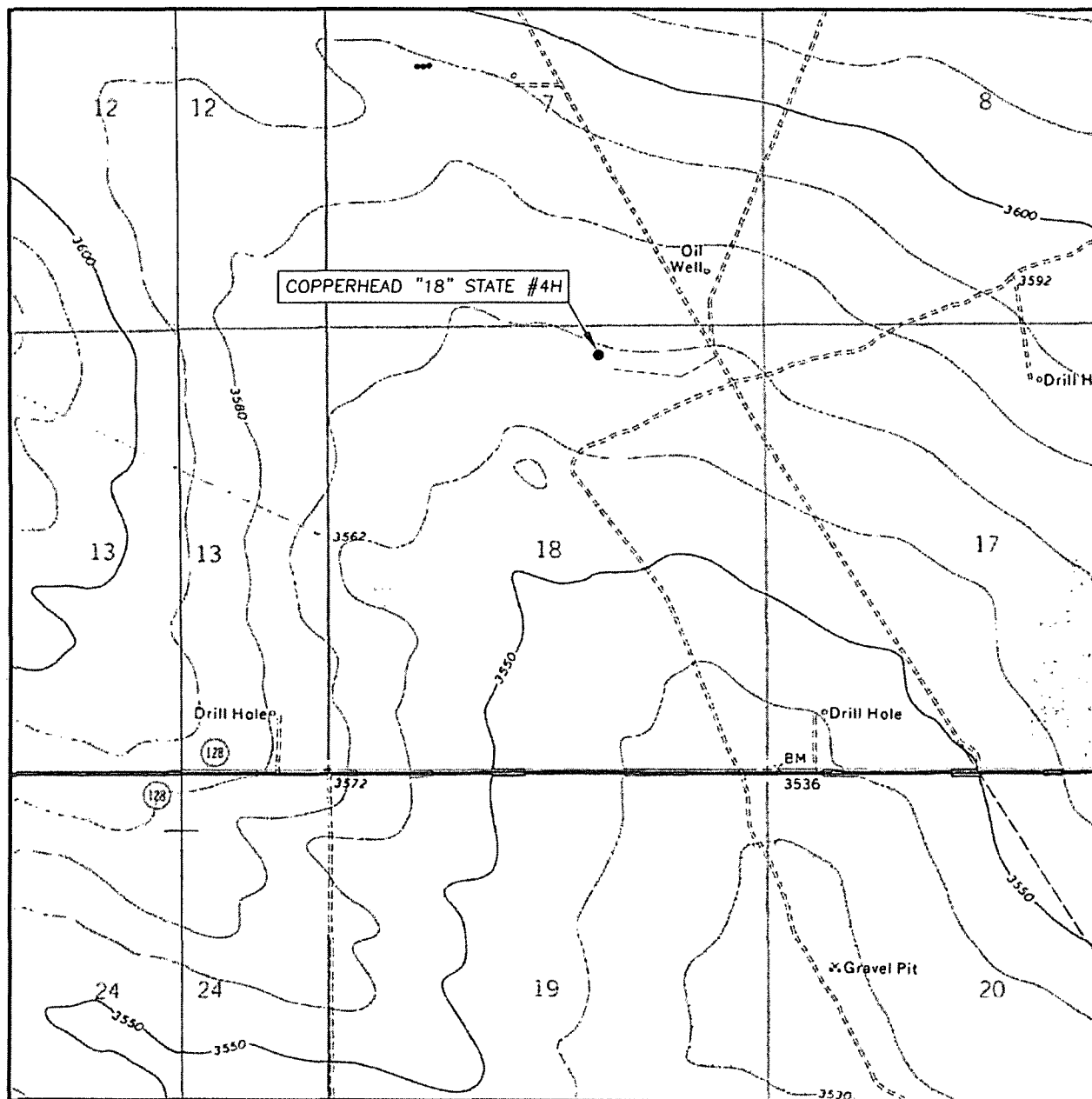


OXY USA INC.

COPPERHEAD "18" STATE #4H LOCATED AT  
340' FNL & 1980' FEL IN SECTION 18,  
TOWNSHIP 24 SOUTH, RANGE 33 EAST,  
N.M.P.M., LEA COUNTY, NEW MEXICO

Survey Date: 08/27/13	Sheet 1 of 1 Sheets	
W.O. Number: 130827WL-c (Rev. A)	Drawn By: KA	Rev: A
Date: 09/10/13	130827WL-c	Scale: 1" = 1000'

# LOCATION VERIFICATION MAP



SCALE: 1" = 2000'

CONTOUR INTERVAL: 10'

SEC. 18 TWP. 24-S RGE. 33-E

SURVEY N.M.P.M.

COUNTY LEA

DESCRIPTION 340' FNL & 1980' FEL

ELEVATION 3570.0'

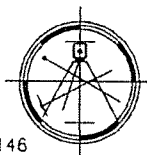
OPERATOR OXY USA INC.

LEASE COPPERHEAD "18" STATE #4H

U.S.G.S. TOPOGRAPHIC MAP  
BELL LAKE, N.M.

Asel Surveying

P.O. BOX 393 - 310 W. TAYLOR  
HOBBS, NEW MEXICO - 575-393-9146



## VICINITY MAP



SCALE: 1" = 2 MILES

DIRECTIONS BEGINNING IN JAL AT THE INTERSECTION OF N.M. STATE HWY. #18 AND N.M. STATE HWY. #128, GO WEST ON N.M. STATE HWY. #128 FOR 25.5 MILES, TURN RIGHT ON CALICHE ROAD AND GO NORTHWEST FOR 1.1 MILES, TURN LEFT ON PROPOSED ROAD AND GO WEST FOR 1307.8 FEET TO LOCATION.