

**RECEIVED**

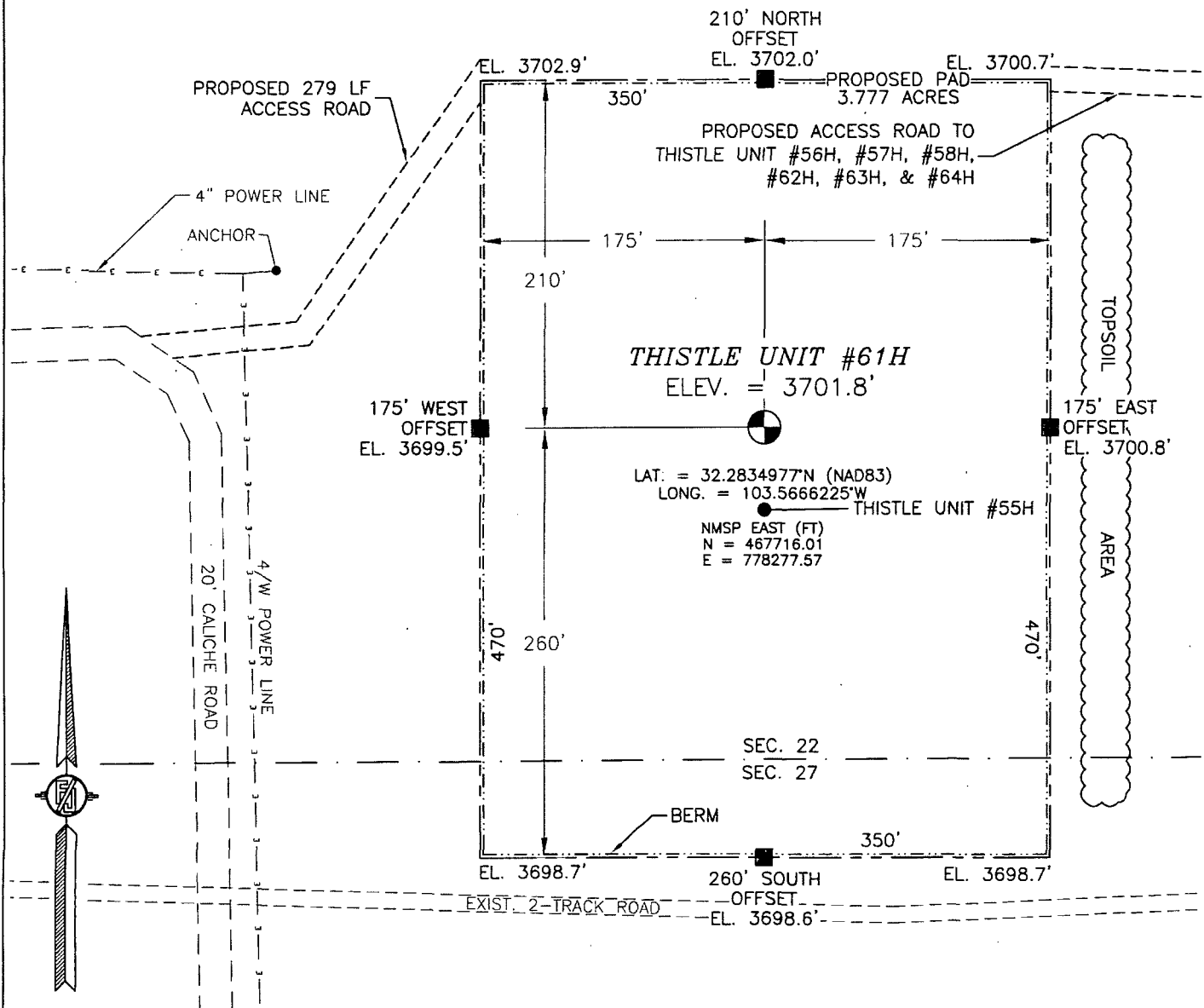
Santa Fe, NM 87505

☐ AMENDED REPORT

NOV 12 2013

SECTION 22, TOWNSHIP 23 SOUTH, RANGE 33 EAST, N.M.P.M.  
LEA COUNTY, STATE OF NEW MEXICO  
**SITE MAP**

NOTE: LATITUDE AND LONGITUDE COORDINATES ARE SHOWN USING THE NORTH AMERICAN DATUM OF 1983 (NAD83). LISTED NEW MEXICO STATE PLANE EAST COORDINATES ARE GRID (NAD83). BASIS OF BEARING AND DISTANCES USED ARE NEW MEXICO STATE PLANE EAST COORDINATES MODIFIED TO THE SURFACE



010 50 100 200

SCALE 1" = 100'  
DIRECTIONS TO LOCATION

FROM STATE HIGHWAY 128 AND CR 21 (DELAWARE BASIN) GO NORTH ON CR 21 3.95 MILES, TURN LEFT ON PAVED ROAD (XL ROAD) AND GO WEST 3.4 MILES, TURN RIGHT ON CALICHE ROAD AND GO NORTH 0.9 MILES, BEND LEFT AND GO NORTHWEST 0.15 MILES, BEND RIGHT AND GO NORTHEAST 0.1 MILES, BEND RIGHT AND GO EAST 375' TO A PROPOSED ROAD SURVEY AND FOLLOW FLAGS EAST 92', BEND LEFT AND FOLLOW FLAGS NORTHEAST 187' TO THE NORTHWEST CORNER OF PROPOSED PAD FOR THIS LOCATION.

DEVON ENERGY PRODUCTION COMPANY, L.P.  
**THISTLE UNIT #61H**  
LOCATED 200 FT. FROM THE SOUTH LINE  
AND 660 FT. FROM THE WEST LINE OF  
SECTION 22, TOWNSHIP 23 SOUTH,  
RANGE 33 EAST, N.M.P.M.  
LEA COUNTY, STATE OF NEW MEXICO

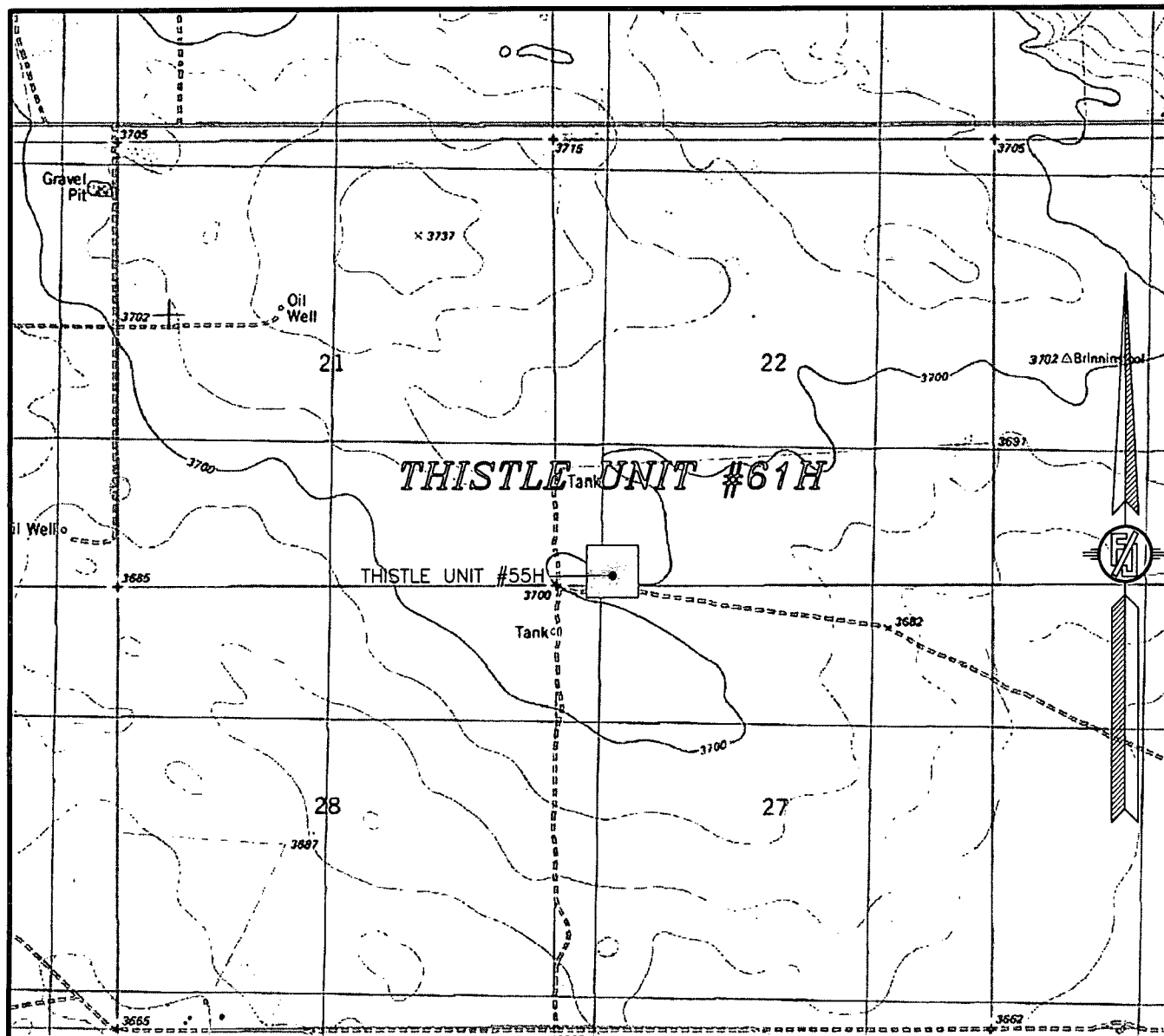
OCTOBER 16, 2013

SURVEY NO. 2112A

MADRON SURVEYING, INC. 301 SOUTH CANAL (575) 234-3341

CARLSBAD, NEW MEXICO

SECTION 22, TOWNSHIP 23 SOUTH, RANGE 33 EAST, N.M.P.M.  
LEA COUNTY, STATE OF NEW MEXICO  
LOCATION VERIFICATION MAP



USGS QUAD MAP:  
TIP TOP WELLS

NOT TO SCALE

DEVON ENERGY PRODUCTION COMPANY, L.P.

**THISTLE UNIT #61H**

LOCATED 200 FT. FROM THE SOUTH LINE

AND 660 FT. FROM THE WEST LINE OF

SECTION 22, TOWNSHIP 23 SOUTH,

RANGE 33 EAST, N.M.P.M.

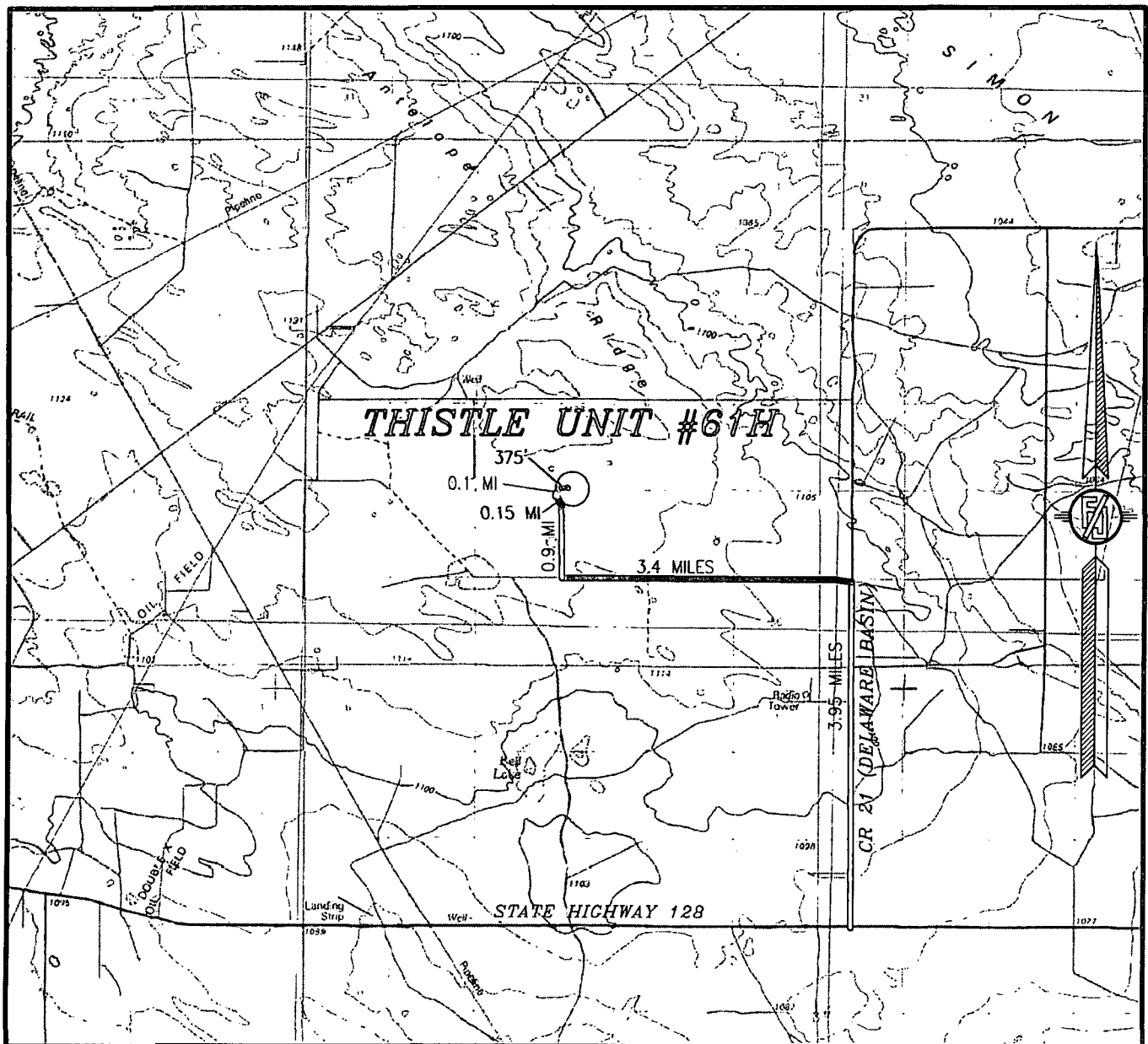
LEA COUNTY, STATE OF NEW MEXICO

OCTOBER 16, 2013

SURVEY NO. 2112A

MADRON SURVEYING, INC. 301 SOUTH CANAL (575) 234-3341 CARLSBAD, NEW MEXICO

SECTION 22, TOWNSHIP 23 SOUTH, RANGE 33 EAST, N.M.P.M.  
LEA COUNTY, STATE OF NEW MEXICO  
VICINITY MAP



NOT TO SCALE

DEVON ENERGY PRODUCTION COMPANY, L.P.

**THISTLE UNIT #61H**

LOCATED 200 FT. FROM THE SOUTH LINE  
AND 660 FT. FROM THE WEST LINE OF  
SECTION 22, TOWNSHIP 23 SOUTH,  
RANGE 33 EAST, N.M.P.M.  
LEA COUNTY, STATE OF NEW MEXICO

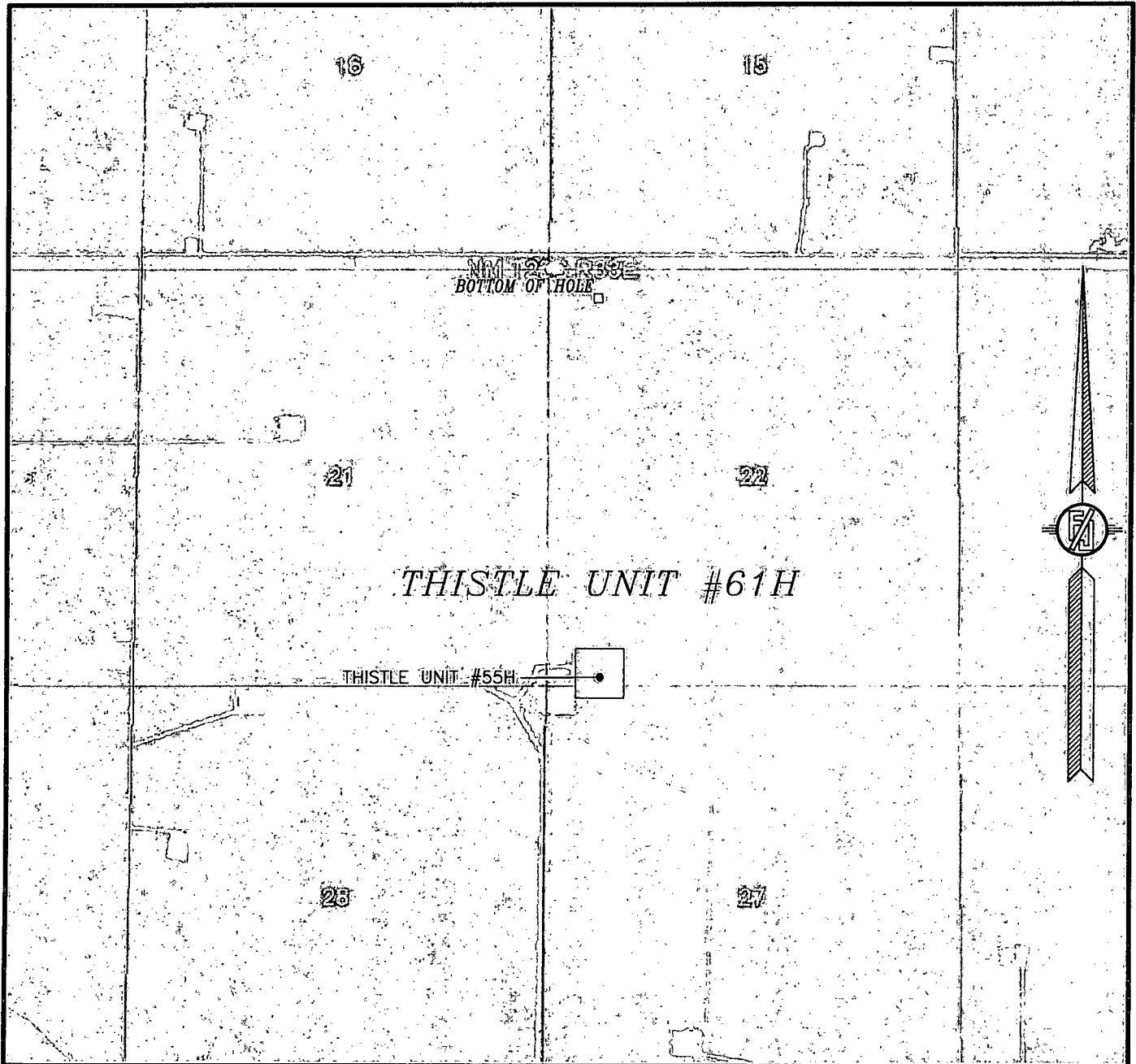
OCTOBER 16, 2013

**DIRECTIONS TO LOCATION**

FROM STATE HIGHWAY 128 AND CR 21 (DELAWARE BASIN) GO NORTH ON CR 21 3.95 MILES, TURN LEFT ON PAVED ROAD (XL ROAD) AND GO WEST 3.4 MILES, TURN RIGHT ON CALICHE ROAD AND GO NORTH 0.9 MILES, BEND LEFT AND GO NORTHWEST 0.15 MILES, BEND RIGHT AND GO NORTHEAST 0.1 MILES, BEND RIGHT AND GO EAST 375' TO A PROPOSED ROAD SURVEY AND FOLLOW FLAGS EAST 92', BEND LEFT AND FOLLOW FLAGS NORTHEAST 187' TO THE NORTHWEST CORNER OF PROPOSED PAD FOR THIS LOCATION.

MADRON SURVEYING, INC. 301 SOUTH CANAL (575) 234-3341 SURVEY NO. 2112A CARLSBAD, NEW MEXICO

SECTION 22, TOWNSHIP 23 SOUTH, RANGE 33 EAST, N.M.P.M.  
LEA COUNTY, STATE OF NEW MEXICO  
AERIAL PHOTO



NOT TO SCALE  
AERIAL PHOTO:  
GOOGLE EARTH  
MARCH 2012

DEVON ENERGY PRODUCTION COMPANY, L.P.  
**THISTLE UNIT #61H**  
LOCATED 200 FT. FROM THE SOUTH LINE  
AND 660 FT. FROM THE WEST LINE OF  
SECTION 22, TOWNSHIP 23 SOUTH,  
RANGE 33 EAST, N.M.P.M.  
LEA COUNTY, STATE OF NEW MEXICO

OCTOBER 16, 2013

MADRON SURVEYING, INC. 301 SOUTH CANAL (575) 234-3341 SURVEY NO. 2112A  
CARLSBAD, NEW MEXICO