

HOBBS OCD

NOV 21 2013

## DISTRICT I

1625 N. French Dr., Hobbs, NM 88240  
Phone (575) 393-6161 Fax: (575) 393-0720

## DISTRICT II

811 S. First St., Artesia, NM 88210  
Phone (505) 748-1283 Fax: (505) 748-9720

## DISTRICT III

1000 Rio Brazos Rd., Aztec, NM 87410  
Phone (505) 334-6170 Fax: (505) 334-6170

## DISTRICT IV

1220 S. St. Francis Dr., Santa Fe, NM 87505  
Phone (505) 478-3400 Fax: (505) 478-3402State of New Mexico  
Energy, Minerals and Natural Resources Department

RECEIVED

## CONSERVATION DIVISION

1220 South St. Francis Dr.  
Santa Fe, New Mexico 87505

Form C-102

Revised August 1, 2011

Submit one copy to appropriate  
District Office

## WELL LOCATION AND ACREAGE DEDICATION PLAT

☐ AMENDED REPORT

API Number <b>30-009-20025</b>	Pool Code <b>96205</b>	Well Name <b>WC-009 G-07 NO 835219; Penn</b>
Property Code <b>4026D</b>	Property Name <b>PULLIAM FARMS 27 P</b>	Well Number <b># 27 P 1</b>
OGRID No. <b>295752</b>	Operator Name <b>ALTA MESA SERVICES, L.P.</b>	Elevation <b>4562'</b>

## Surface Location

UL or lot No.	Section	Township	Range	Lot Idn	Feet from the	North/South line	Feet from the	East/West line	County
P	27	8 N	35 E		358	SOUTH	827	EAST	CURRY

## Bottom Hole Location If Different From Surface

UL or lot No.	Section	Township	Range	Lot Idn	Feet from the	North/South line	Feet from the	East/West line	County
Dedicated Acres	Joint or Infill	Consolidation Code	Order No.						

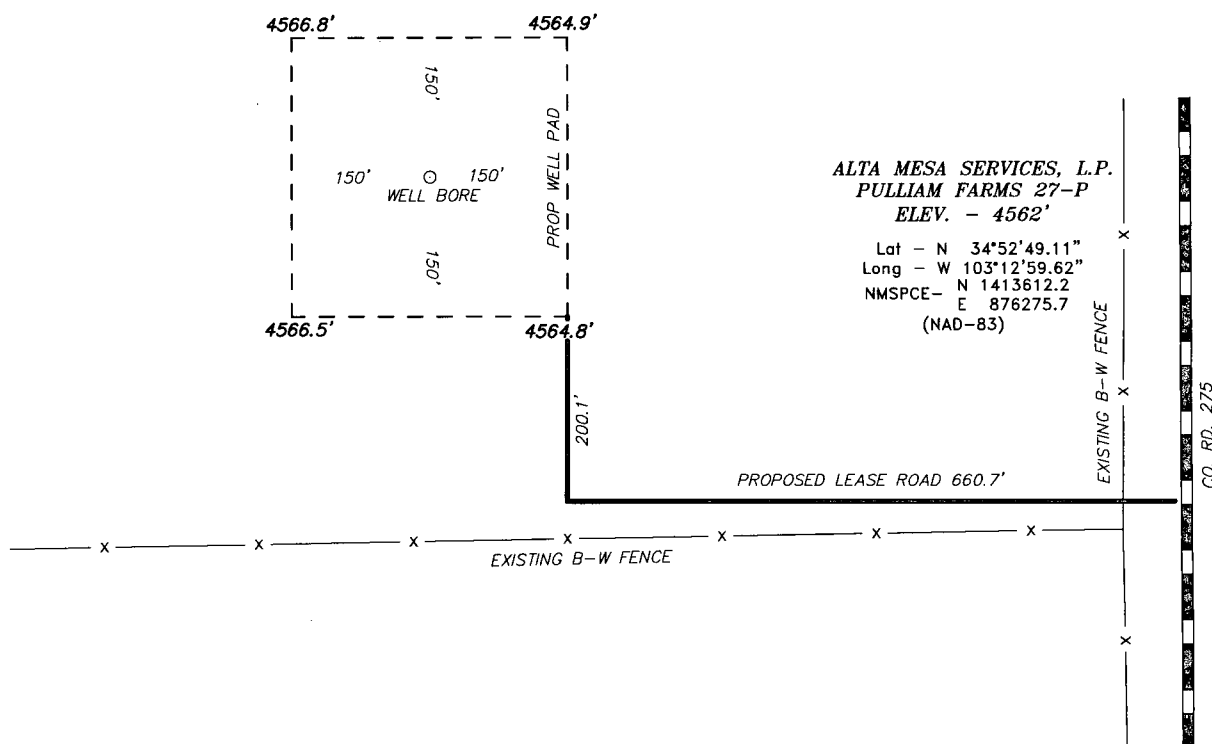
NO ALLOWABLE WILL BE ASSIGNED TO THIS COMPLETION UNTIL ALL INTERESTS HAVE BEEN CONSOLIDATED  
OR A NON-STANDARD UNIT HAS BEEN APPROVED BY THE DIVISION

<p><b>SURFACE LOCATION</b>          Lat - N 34°52'49.11"          Long - W 103°12'59.62"          NAD83 - N 1413612.2          E 876275.7          (NAD-83)</p>	<p><b>OPERATOR CERTIFICATION</b>          I hereby certify that the information contained herein is true and complete to the best of my knowledge and belief, that this organization either owns a working interest or unleased mineral interest in the land including the proposed bottom hole location or has a right to drill this well at this location pursuant to a contract with an owner of such a mineral or working interest, or to a voluntary pooling agreement or a compulsory pooling order heretofore entered by the division.</p> <p><i>Bridget Helffrich</i> 11-18-13          Signature Date</p> <p>Bridget Helffrich          Printed Name          bhelffrich@altamesa.net          Email Address</p>		
		<p><b>SURVEYOR CERTIFICATION</b>          I hereby certify that the well location shown on this plat was plotted from field notes of actual surveys made by me or under my supervision and that the same is true and correct to the best of my belief.</p> <p><i>NOVEMBER JONES</i> 11-13          Date Surveyed</p> <p><i>[Signature]</i>          Signature &amp; Seal of Professional Surveyor 7977</p> <p>Certificate of Jones 7977          BASIN SURVEYS</p>	
			<p>0' 500' 1000' 1500' 2000'</p> <p>SCALE: 1" = 1000'</p> <p>WQ Num.: 29728</p>
			<p>0' 500' 1000' 1500' 2000'</p> <p>SCALE: 1" = 1000'</p> <p>WQ Num.: 29728</p>

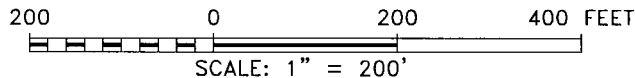
DEC 02 2013

bm

SECTION 27, TOWNSHIP 8 NORTH, RANGE 35 EAST, N.M.P.M.,  
CURRY COUNTY, NEW MEXICO.

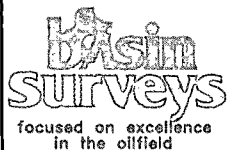


TUCUMCARI, NM IS ±35 MILES TO THE NORTHWEST OF LOCATION.



Directions to Location:

FROM THE JUNCTION OF CO. RD. 275 AND CO. RD. 43, GO WEST ON PROPOSED LEASE ROAD TO PROPOSED LOCATION.



P.O. Box 1786  
1120 N. West County Rd.  
Hobbs, New Mexico 88241

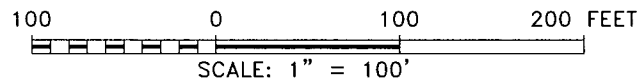
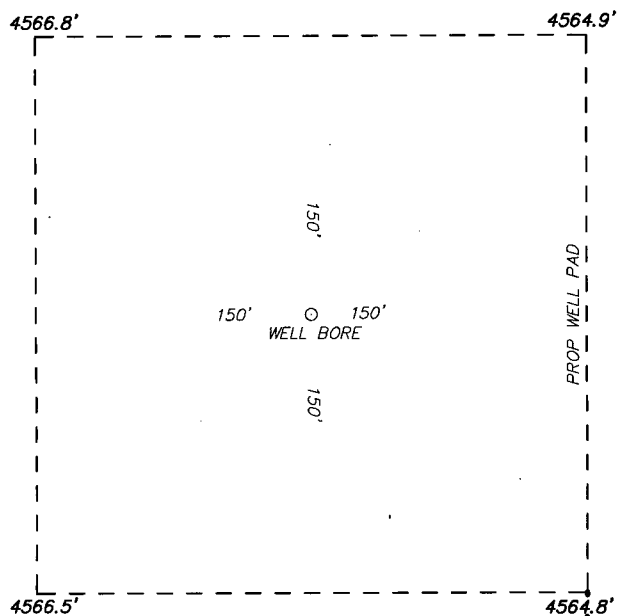
(575) 393-7316 - Office  
(575) 392-2206 - Fax  
basinsurveys.com

**ALTA MESA SERVICES, L.P.**

REF: PULLIAM FARMS 27-P / WELL PAD TOPO

THE PULLIAM FARMS 27-P LOCATED 358' FROM  
THE SOUTH LINE AND 827' FROM THE EAST LINE OF  
SECTION 27, TOWNSHIP 8 NORTH, RANGE 35 EAST,  
N.M.P.M., CURRY COUNTY, NEW MEXICO.

SECTION 27, TOWNSHIP 8 NORTH, RANGE 35 EAST, N.M.P.M.,  
CURRY COUNTY, NEW MEXICO.



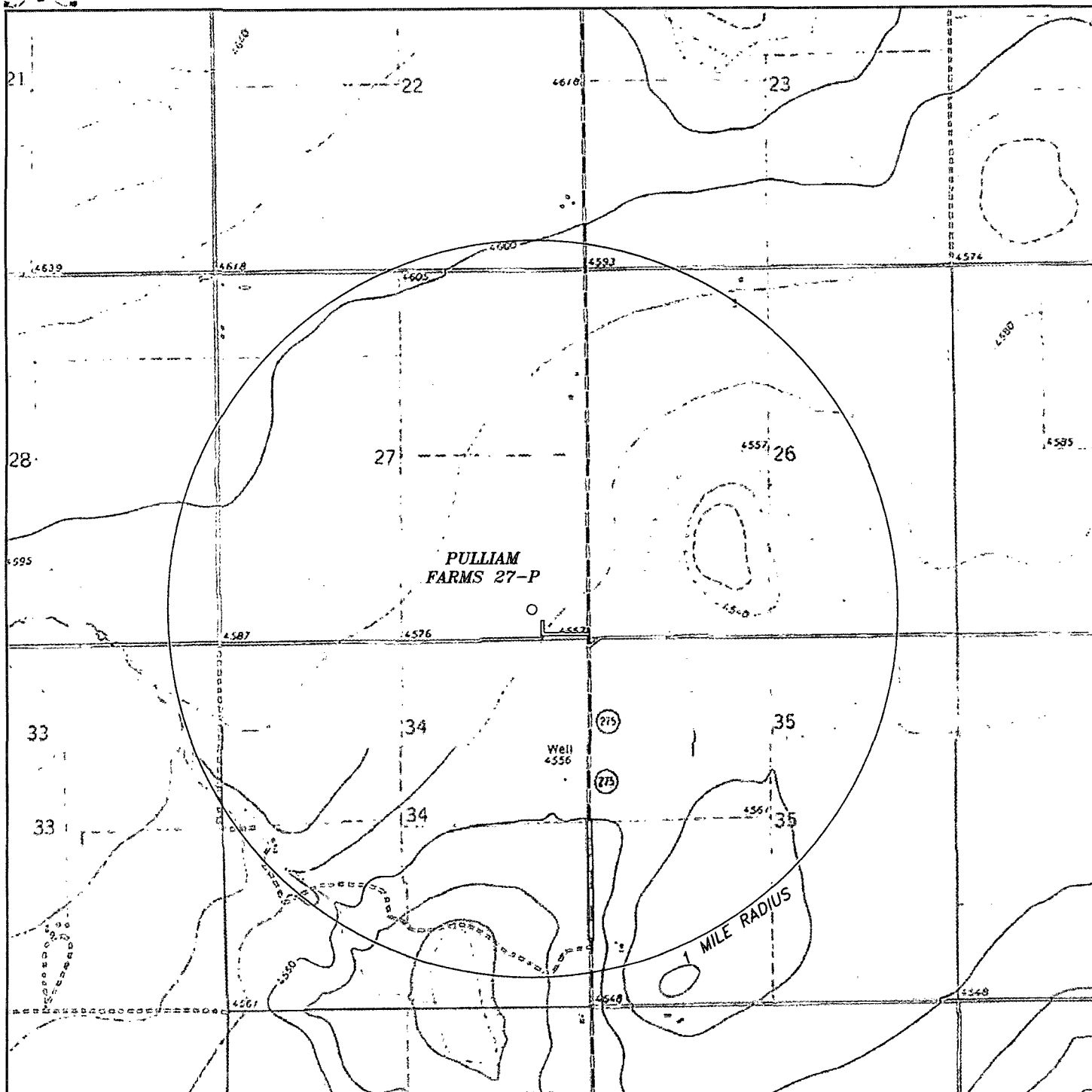
**ALTA MESA SERVICES, L.P.**

REF: PULLIAM FARMS 27-P / WELL PAD TOPO

THE PULLIAM FARMS 27-P LOCATED 358' FROM  
THE SOUTH LINE AND 827' FROM THE EAST LINE OF  
SECTION 27, TOWNSHIP 8 NORTH, RANGE 35 EAST,  
N.M.P.M., CURRY COUNTY, NEW MEXICO.

**basin**  
**surveys**  
focused on excellence  
in the oilfield

P.O. Box 1785  
1120 N. West County Rd.  
Hobbs, New Mexico 88241  
(575) 393-7316 - Office  
(575) 392-2206 - Fax  
basinsurveys.com



**PULLIAM FARMS 27-P**  
 Located 358' FSL and 827' FEL  
 Section 27, Township 8 North, Range 35 East,  
 N.M.P.M., Curry County, New Mexico.

**basin**  
**surveys**  
 focused on excellence  
 in the oilfield

P.O. Box 1786  
 1120 N. West County Rd.  
 Hobbs, New Mexico 88241  
 (575) 393-7316 - Office  
 (575) 392-2206 - Fax  
 basinsurveys.com

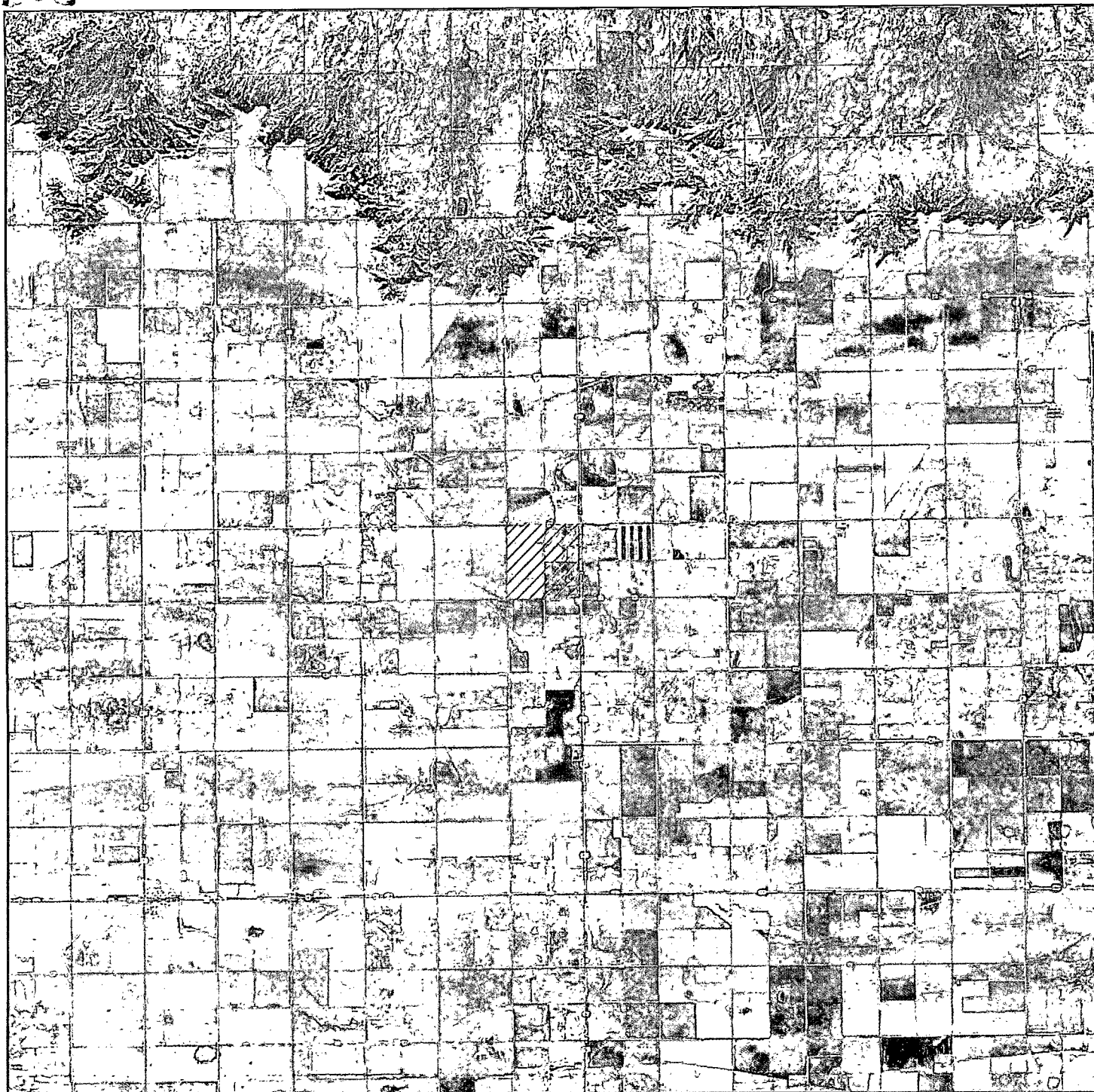
0' 1000' 2000' 3000' 4000'  
 SCALE: 1" = 2000'

W.O. Number: JMS 29728

Survey Date: 11-08-2013

YELLOW TINT - USA LAND  
 BLUE TINT - STATE LAND  
 NATURAL COLOR - FEE LAND

**ALTA MESA**  
**SERVICES,**  
**L.P.**



**PULLIAM FARMS 27-P**  
 Located 358' FSL and 827' FEL  
 Section 27, Township 8 North, Range 35 East,  
 N.M.P.M., Curry County, New Mexico.

**basin**  
**surveys**  
 focused on excellence  
 in the oilfield

P.O. Box 1786  
 1120 N. West County Rd.  
 Hobbs, New Mexico 88241  
 (575) 393-7316 - Office  
 (575) 392-2206 - Fax  
 basinsurveys.com

0 1 MI 2 MI 3 MI 4 MI  
 SCALE: 1" = 2 MILES

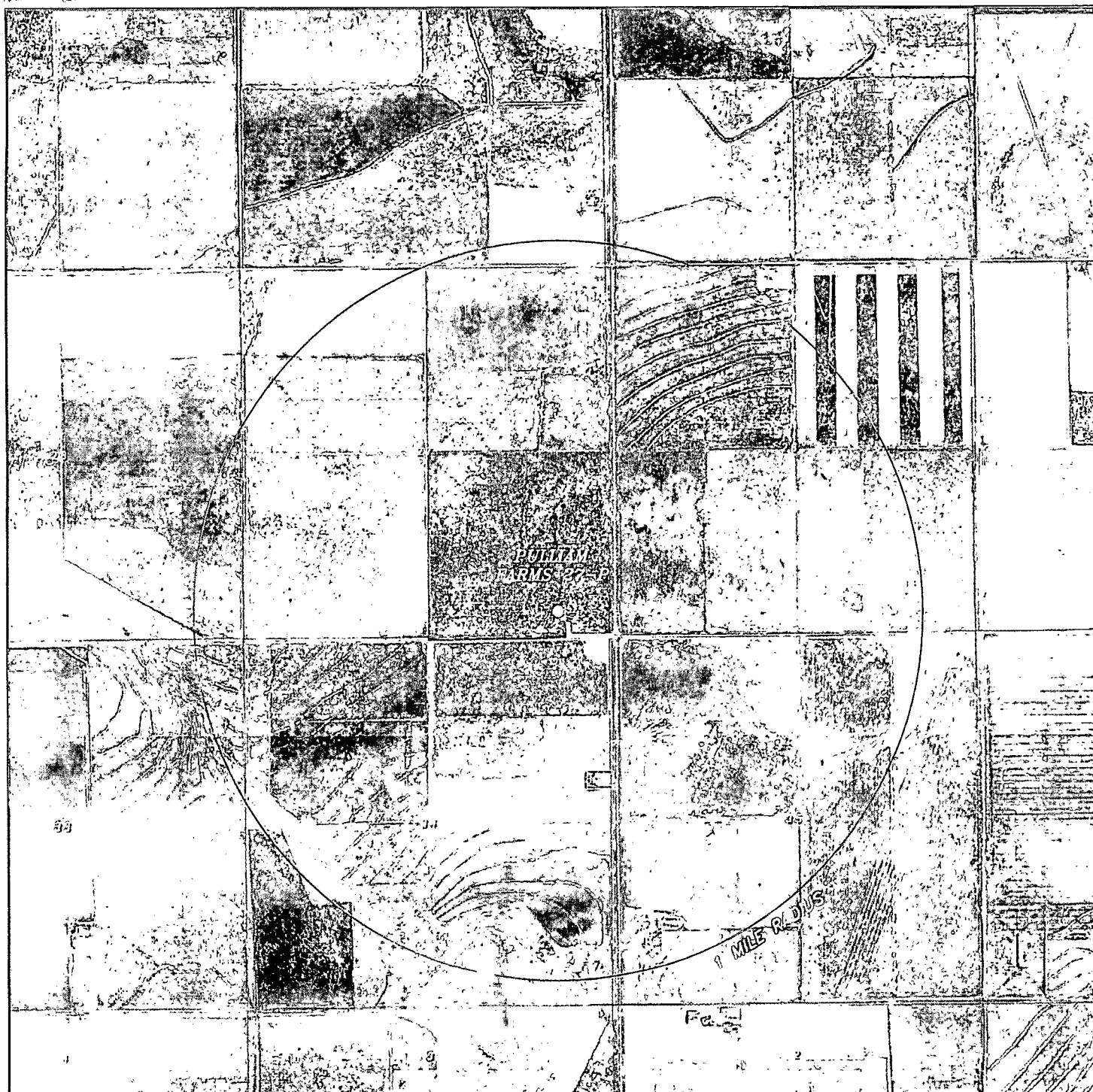
W.O. Number: JMS 29728

Survey Date: 11-08-2013

YELLOW TINT - USA LAND  
 BLUE TINT - STATE LAND  
 NATURAL COLOR - FEE LAND

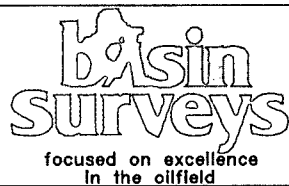


**ALTA MESA**  
**SERVICES,**  
**L.P.**



# PULLIAM FARMS 27-P

Located 358' FSL and 827' FEL  
 Section 27, Township 8 North, Range 35 East,  
 N.M.P.M., Curry County, New Mexico.



P.O. Box 1786  
 1120 N. West County Rd.  
 Hobbs, New Mexico 88241  
 (575) 393-7316 - Office  
 (575) 392-2206 - Fax  
 basinsurveys.com

0' 1000' 2000' 3000' 4000'  
 SCALE: 1" = 2000'

W.O. Number: JMS 29728

Survey Date: 11-08-2013

YELLOW TINT - USA LAND  
 BLUE TINT - STATE LAND  
 NATURAL COLOR - FEE LAND

ALTA MESA  
 SERVICES,  
 L.P.