

HOBBS OCD
NOV 21 2013
RECEIVED

DISTRICT I
1825 N. FRENCH DR., HOBBS, NM 88240

DISTRICT II
1301 W. GRAND AVENUE, ARTESIA, NM 80210

DISTRICT III
1000 Rio Brazos Rd., Aztec, NM 87410

DISTRICT IV
1220 S. ST. FRANCIS DR., SANTA FE, NM 87505

State of New Mexico
Energy, Minerals and Natural Resources Department

OIL CONSERVATION DIVISION
1220 SOUTH ST. FRANCIS DR.
Santa Fe, New Mexico 87505

Form C-102
Revised JUNE 10, 2003
Submit to Appropriate District Office
State Lease - 4 Copies
Fee Lease - 3 Copies

WELL LOCATION AND ACREAGE DEDICATION PLAT

☐ AMENDED REPORT

API Number 30-025-37398	Pool Code	Pool Name Livingston, Glorietta
Property Code 34963	Property Name EM 2 STATE	
OGRID No. 113315	Operator Name TEXLAND PETROLEUM, LP	Well Number 1
		Elevation 3837'

Surface Location

UL or lot No.	Section	Township	Range	Lot Idn	Feet from the	North/South line	Feet from the	East/West line	County
J	2	17-S	36-E		1740	SOUTH	2310	EAST	LEA

Bottom Hole Location If Different From Surface

UL or lot No.	Section	Township	Range	Lot Idn	Feet from the	North/South line	Feet from the	East/West line	County

Dedicated Acres	Joint or Infill	Consolidation Code	Order No.
40			

NO ALLOWABLE WILL BE ASSIGNED TO THIS COMPLETION UNTIL ALL INTERESTS HAVE BEEN CONSOLIDATED
OR A NON-STANDARD UNIT HAS BEEN APPROVED BY THE DIVISION

LOT 4	LOT 3	LOT 2	LOT 1
39.55 AC	39.58 AC	39.58 AC	39.59 AC
<p>GEODETIC COORDINATES NAD 27 NME</p> <p>Y=678630.3 N X=810067.7 E</p> <p>LAT.=32°51'41.62" N LONG.=103°19'24.83" W</p>		<p>Texland et al</p> <p>2310'</p> <p>1740'</p>	

OPERATOR CERTIFICATION

I hereby certify the the information contained herein is true and complete to the best of my knowledge and belief.

Vickie Smith
Signature

Vickie Smith
Printed Name

Regulatory Analyst
Title

11-19-13
Date

SURVEYOR CERTIFICATION

I hereby certify that the well location shown on this plat was plotted from field notes of actual surveys made by me or under my supervision, and that the same is true and correct to the best of my belief.

JULY 20, 2005

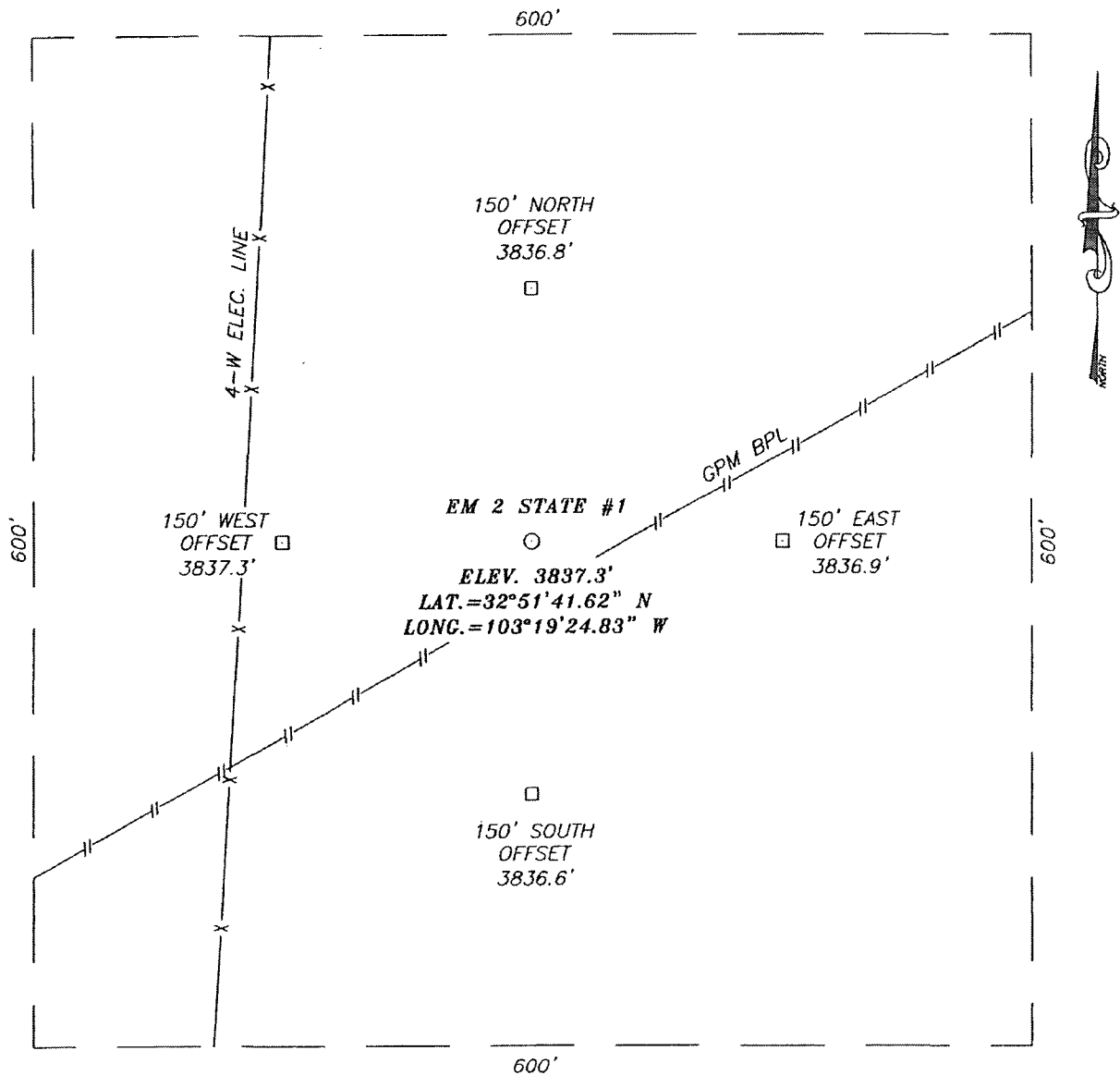
Date Surveyed: _____ LA

Signature & Seal of Professional Surveyor
GARY EIDSON 7/20/05
05.11.1146

Certificate No. GARY EIDSON 12641

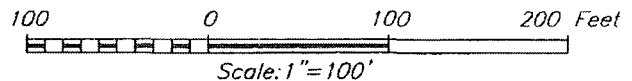
DEC 02 2013

SECTION 2, TOWNSHIP 17 SOUTH, RANGE 36 EAST, N.M.P.M.,
LEA COUNTY, NEW MEXICO



DIRECTIONS TO LOCATION

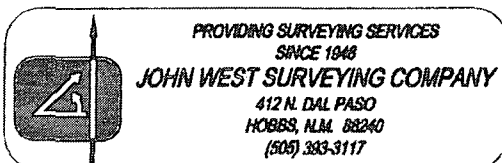
FROM THE INTERSECTION OF ST. HWY. #18 AND WEST STILES RD. (L78) GO WEST ON WEST STILES ROAD FOR APPROX. 3.0 MILES TO A ROAD WITH LOCKED GATE ON NORTH SIDE OF ROAD. GO NORTH APPROX. 0.4 MILES. THIS LOCATION IS APPROX. 320' EAST OF THE ROAD.



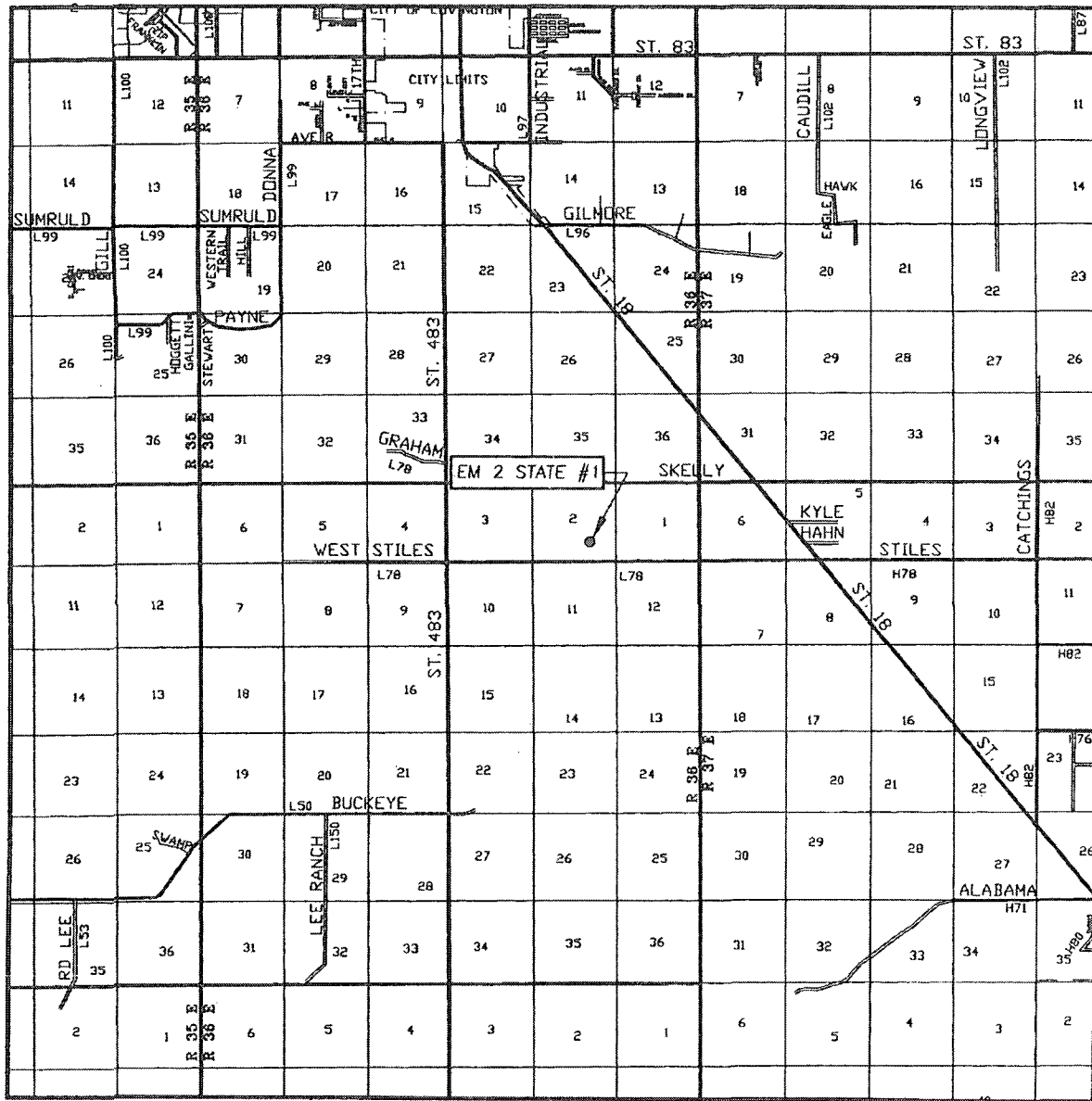
TEXLAND PETROLEUM, LP

EM 2 STATE #1 WELL
LOCATED 1740 FEET FROM THE SOUTH LINE
AND 2310 FEET FROM THE EAST LINE OF SECTION 2,
TOWNSHIP 17 SOUTH, RANGE 36 EAST, N.M.P.M.,
LEA COUNTY, NEW MEXICO.

Survey Date: 7/20/05	Sheet 1 of 1 Sheets
W.O. Number: 05.11.1146	Dr By: LA
Date: 7/20/05	Disk: CD#4
05.11.1146	Scale: 1"=100'



VICINITY MAP



SCALE: 1" = 2 MILES

SEC. 2 TWP. 17-S RGE. 36-E

SURVEY N.M.P.M.

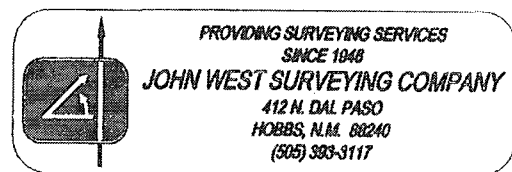
COUNTY LEA

DESCRIPTION 1740' FSL & 2310' FEL

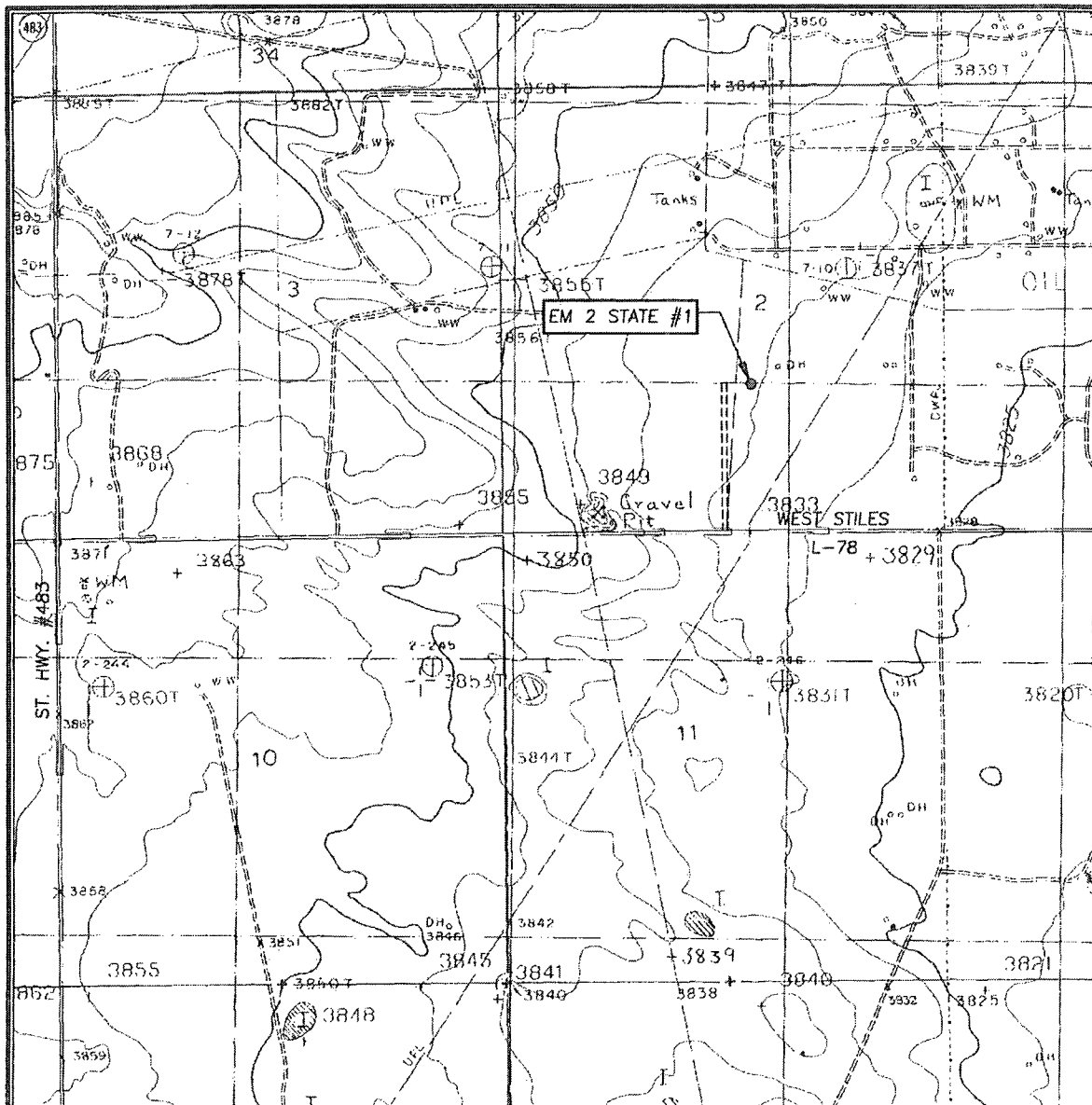
ELEVATION 3837'

OPERATOR TEXLAND PETROLEUM, LP

LEASE EM 2 STATE



LOCATION VERIFICATION MAP



SCALE: 1" = 2000'

CONTOUR INTERVAL:
LOVINGTON SE, N.M. - 5'

SEC. 2 TWP. 17-S RGE. 36-E

SURVEY N.M.P.M.

COUNTY LEA

DESCRIPTION 1740' FSL & 2310' FEL

ELEVATION 3837'

OPERATOR TEXLAND PETROLEUM, LP

LEASE EM 2 STATE

U.S.G.S. TOPOGRAPHIC MAP
LOVINGTON SE, N.M.

