

DISTRICT I  
1625 N. French Dr., Hobbs, NM 88249  
Phone: (575) 393-6161 Fax: (575) 393-0720  
DISTRICT II  
811 S. First St., Artesia, NM 88210  
Phone: (575) 748-1283 Fax: (575) 748-9720  
DISTRICT III  
1000 Rio Brazos Road, Aztec, NM 87410  
Phone: (505) 334-6178 Fax: (505) 334-6170  
DISTRICT IV  
1220 S. St. Francis Dr., Santa Fe, NM 87505  
Phone: (505) 476-3460 Fax: (505) 476-3462

State of New Mexico  
Energy, Minerals & Natural Resources Department  
OIL CONSERVATION DIVISION  
1220 South St. Francis Dr.  
Santa Fe, New Mexico 87505

Form C-102  
Revised August 1, 2011  
Submit one copy to appropriate  
District Office

AMENDED REPORT

WELL LOCATION AND ACREAGE DEDICATION PLAT

|                                   |   |                                    |
|-----------------------------------|---|------------------------------------|
| API Number<br><b>30-005-29210</b> | Pool Code<br><b>8559</b>                    | Pool Name<br><b>CAPROCK; QUEEN</b> |
| Property Code<br><b>303735</b>    | Property Name<br><b>RQU</b>                 | Well Number<br><b>319</b>          |
| OGRID No.<br><b>247128</b>        | Operator Name<br><b>CELERO ENERGY II LP</b> | Elevation<br><b>4388'</b>          |

Surface Location

|                           |                      |                         |                      |         |                              |                                  |                              |                               |                         |
|---------------------------|----------------------|-------------------------|----------------------|---------|------------------------------|----------------------------------|------------------------------|-------------------------------|-------------------------|
| UL or lot No.<br><b>J</b> | Section<br><b>36</b> | Township<br><b>13-S</b> | Range<br><b>31-E</b> | Lot Idn | Feet from the<br><b>2280</b> | North/South line<br><b>SOUTH</b> | Feet from the<br><b>1906</b> | East/West line<br><b>EAST</b> | County<br><b>CHAVES</b> |
|---------------------------|----------------------|-------------------------|----------------------|---------|------------------------------|----------------------------------|------------------------------|-------------------------------|-------------------------|

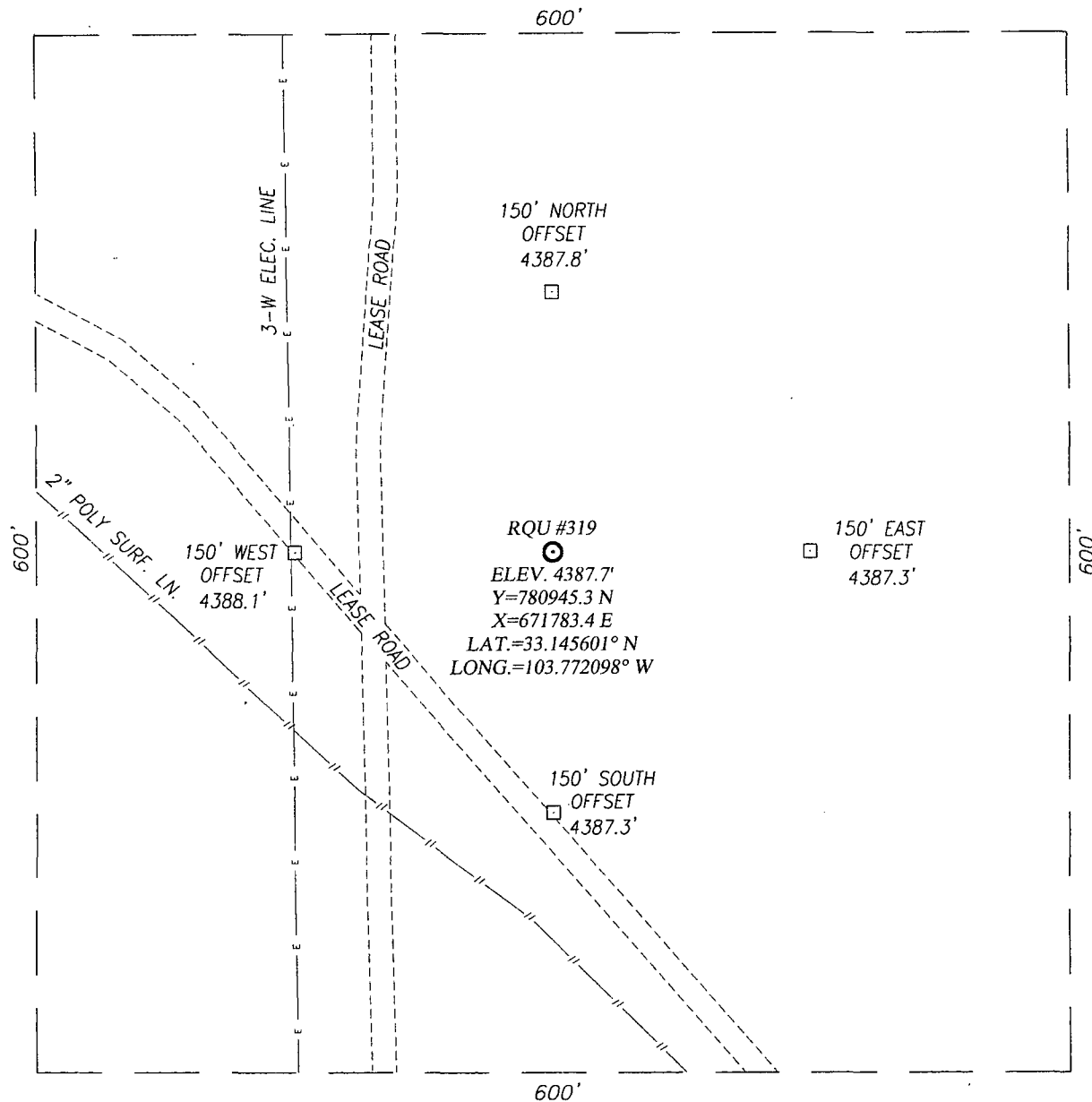
Bottom Hole Location If Different From Surface

|                              |         |                 |                    |         |               |                  |               |                |        |
|------------------------------|---------|-----------------|--------------------|---------|---------------|------------------|---------------|----------------|--------|
| UL or lot No.                | Section | Township        | Range              | Lot Idn | Feet from the | North/South line | Feet from the | East/West line | County |
| Dedicated Acres<br><b>40</b> |         | Joint or Infill | Consolidation Code |         | Order No.     |                  |               |                |        |

NO ALLOWABLE WILL BE ASSIGNED TO THIS COMPLETION UNTIL ALL INTERESTS HAVE BEEN CONSOLIDATED OR A NON-STANDARD UNIT HAS BEEN APPROVED BY THE DIVISION

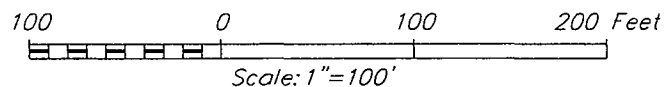
|   |  |
|---|--|
| <p>GEODETIC COORDINATES<br/>NAD 27 NME</p> <p>SURFACE LOCATION<br/>Y=780945.3 N<br/>X=671783.4 E</p> <p>LAT.=33.145601' N<br/>LONG.=103.772098' W</p> | <p>OPERATOR CERTIFICATION</p> <p>I hereby certify that the information herein is true and complete to the best of my knowledge and belief, and that this organization either owns a working interest or unCHAVESsed mineral interest in the land including the proposed bottom hole location or has a right to drill this well at this location pursuant to a contract with an owner of such mineral or working interest, or to a voluntary pooling agreement or a compulsory pooling order heretofore entered by the division.</p> <p><i>Lisa Hunt</i> 11/25/13<br/>Signature Date</p> <p><i>Lisa Hunt</i><br/>Printed Name</p> <p><i>lhunt@celeroenergy.com</i><br/>E-mail Address</p> <p>SURVEYOR CERTIFICATION</p> <p>I hereby certify that the well location shown on this plat was plotted from field notes of actual surveys made by me or under my supervision, and that the same is true and correct to the best of my belief.</p> <p>NOVEMBER 6, 2013</p> <p>Date of Survey</p> <p>Signature &amp; Seal of Professional Surveyor:<br/><i>Ronald E. Eidson</i></p> <p>Certificate Number: Gary G. Eidson 12641<br/>Ronald E. Eidson 3239</p> <p>BKL JWSC W.O.: 13.11.1208</p> |
|---|--|

DEC 02 2013



#### DIRECTIONS TO LOCATION


FROM THE INTERSECTION OF STATE HIGHWAYS 172 AND 249 (HAGGERMAN CUT-OFF) GO NORTH ON HWY. 172 APPROX. 9.8 MILES; TURN RIGHT AND GO EAST APPROX. 1.8 MILES; TURN RIGHT AND GO SOUTH APPROX. 0.8 MILES; THE LOCATION STAKE IS 100 FEET EAST.



## CELERO ENERGY II LP

#### RQU #319 WELL

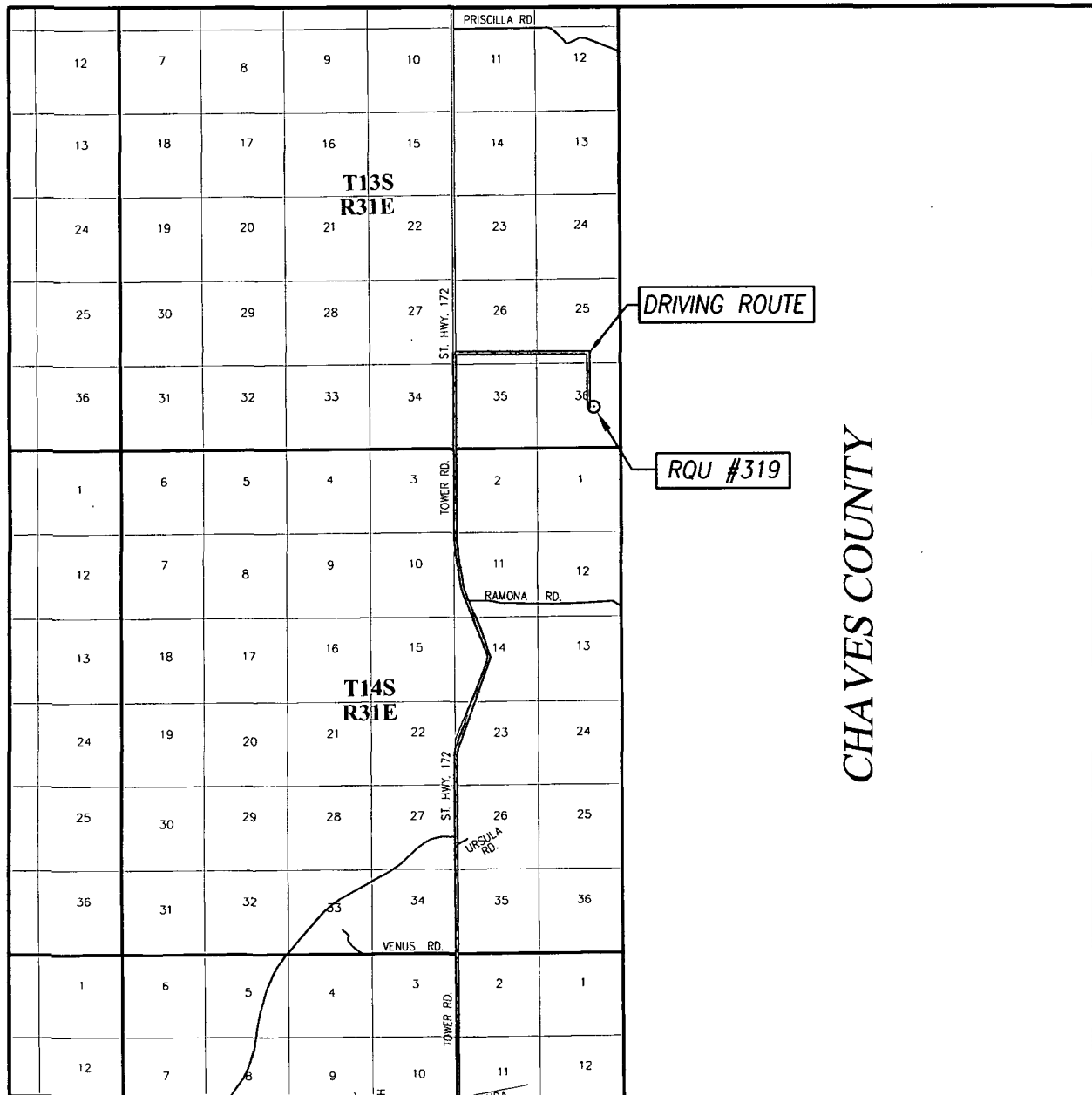
LOCATED 2280 FEET FROM THE SOUTH LINE  
AND 1906 FEET FROM THE EAST LINE OF SECTION 36,  
TOWNSHIP 13 SOUTH, RANGE 31 EAST, N.M.P.M.,  
CHAVES COUNTY, NEW MEXICO



PROVIDING SURVEYING SERVICES  
SINCE 1946  
**JOHN WEST SURVEYING COMPANY**  
412 N. DAL PASO  
HOBBS, N.M. 88240  
(575) 393-3117 [www.jwsc.biz](http://www.jwsc.biz)

|                      |                    |               |
|----------------------|--------------------|---------------|
| Survey Date: 11/1/13 | CAD Date: 11/11/13 | Drawn By: BKL |
| W.O. No.: 13111208   | Rev: .             | Rel. W.O.: .  |
| Sheet 1 of 1         |                    |               |

# VICINITY MAP



SCALE: 1" = 2 MILES

DRIVING ROUTE: SEE LOCATION MAP

SEC. 36 TWP. 13-S RGE. 31-E

SURVEY N.M.P.M.

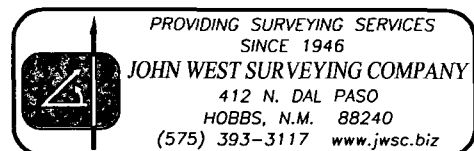
COUNTY CHAVES STATE NEW MEXICO

DESCRIPTION 2280' FSL & 1906' FEL

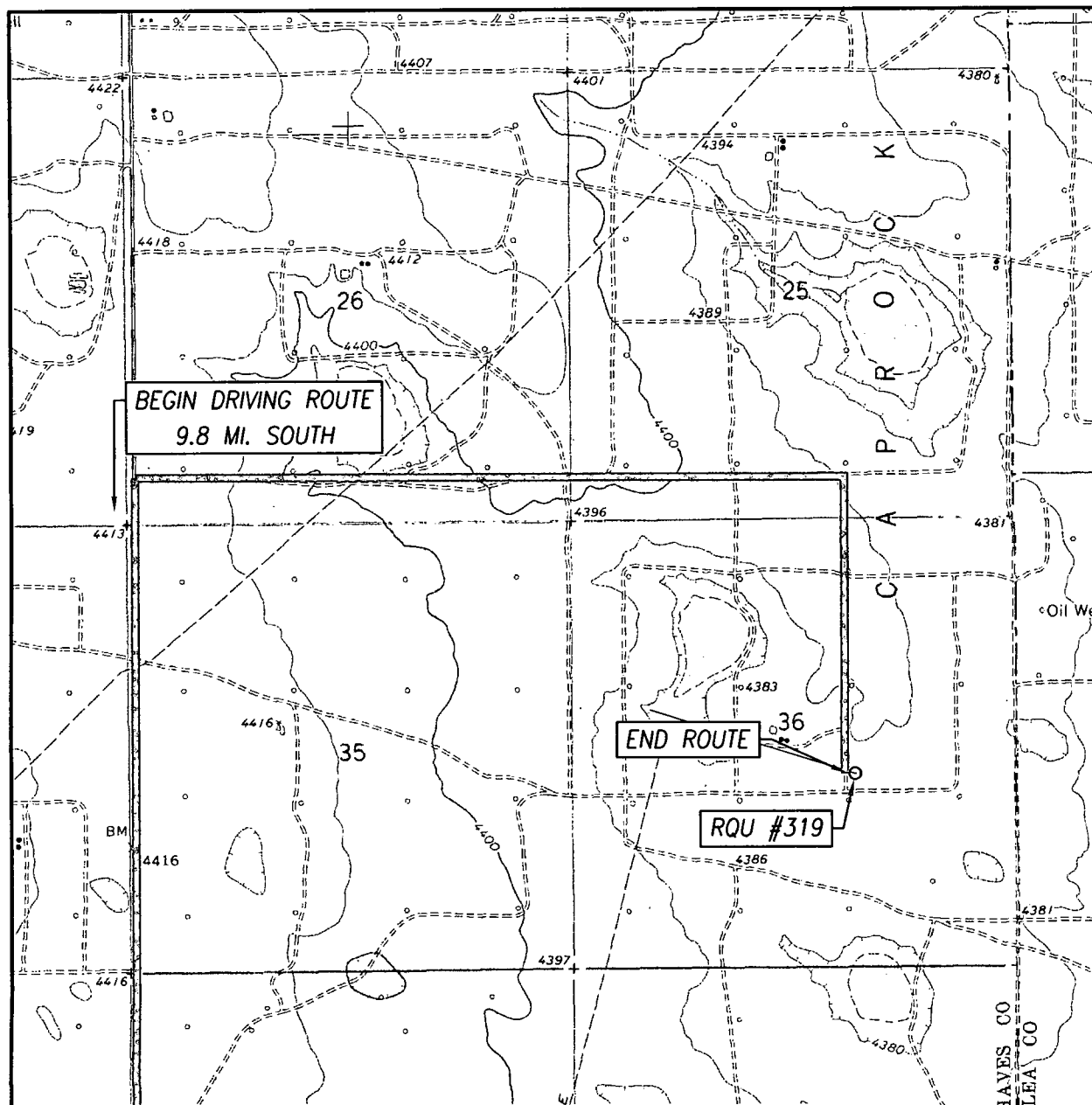
ELEVATION 4388'

OPERATOR CELERO ENERGY II LP

CHAVESSE RQU



# LOCATION VERIFICATION MAP



SCALE: 1" = 2000'

CONTOUR INTERVAL:  
CAUDILL RANCH, N.M. - 10'

SEC. 36 TWP. 13-S RGE. 31-E

SURVEY N.M.P.M.

COUNTY CHAVES STATE NEW MEXICO

DESCRIPTION 2280' FSL & 1906' FEL

ELEVATION 4388'

OPERATOR CELERO ENERGY II LP

CHAVESSE RQU

U.S.G.S. TOPOGRAPHIC MAP  
CAUDILL RANCH, N.M.

## DIRECTIONS TO LOCATION

FROM THE INTERSECTION OF STATE HIGHWAYS 172 AND 249  
(HAGGERMAN CUT-OFF) GO NORTH ON HWY. 172 APPROX. 9.8 MILES;  
TURN RIGHT AND GO EAST APPROX. 1.8 MILES; TURN RIGHT AND GO  
SOUTH APPROX. 0.8 MILES; THE LOCATION STAKE IS 100 FEET EAST.

