

DISTRICT I
1625 N. French Dr., Hobbs, NM 88240
Phone: (575) 393-6161 Fax: (575) 393-0720

DISTRICT II
811 S. First St., Artesia, NM 88210
Phone: (575) 748-1283 Fax: (575) 748-9720

DISTRICT III
1000 Rio Brazos Road, Aztec, NM 87410
Phone: (505) 334-6178 Fax: (505) 334-6170

DISTRICT IV
1220 S. St. Francis Dr., Santa Fe, NM 87505
Phone: (505) 476-3460 Fax: (505) 476-3462

HOBBS OCD

NOV 26 2013

RECEIVED

State of New Mexico
Energy, Minerals & Natural Resources Department
OIL CONSERVATION DIVISION
1220 South St. Francis Dr.
Santa Fe, New Mexico 87505

Form C-102
Revised August 1, 2011
Submit one copy to appropriate
District Office

☐ AMENDED REPORT

WELL LOCATION AND ACREAGE DEDICATION PLAT

API Number 30-025-41526	Pool Code 8559	Pool Name CAPROCK; QUEEN
Property Code 303735	Property Name RQU	Well Number 318
OGRID No. 247128	Operator Name CELERO ENERGY II LP	Elevation 4377'

Surface Location

UL or lot No. N	Section 30	Township 13-S	Range 32-E	Lot Idn	Feet from the 880	North/South line SOUTH	Feet from the 1570	East/West line WEST	County LEA
---------------------------	----------------------	-------------------------	----------------------	---------	-----------------------------	----------------------------------	------------------------------	-------------------------------	----------------------

Bottom Hole Location If Different From Surface

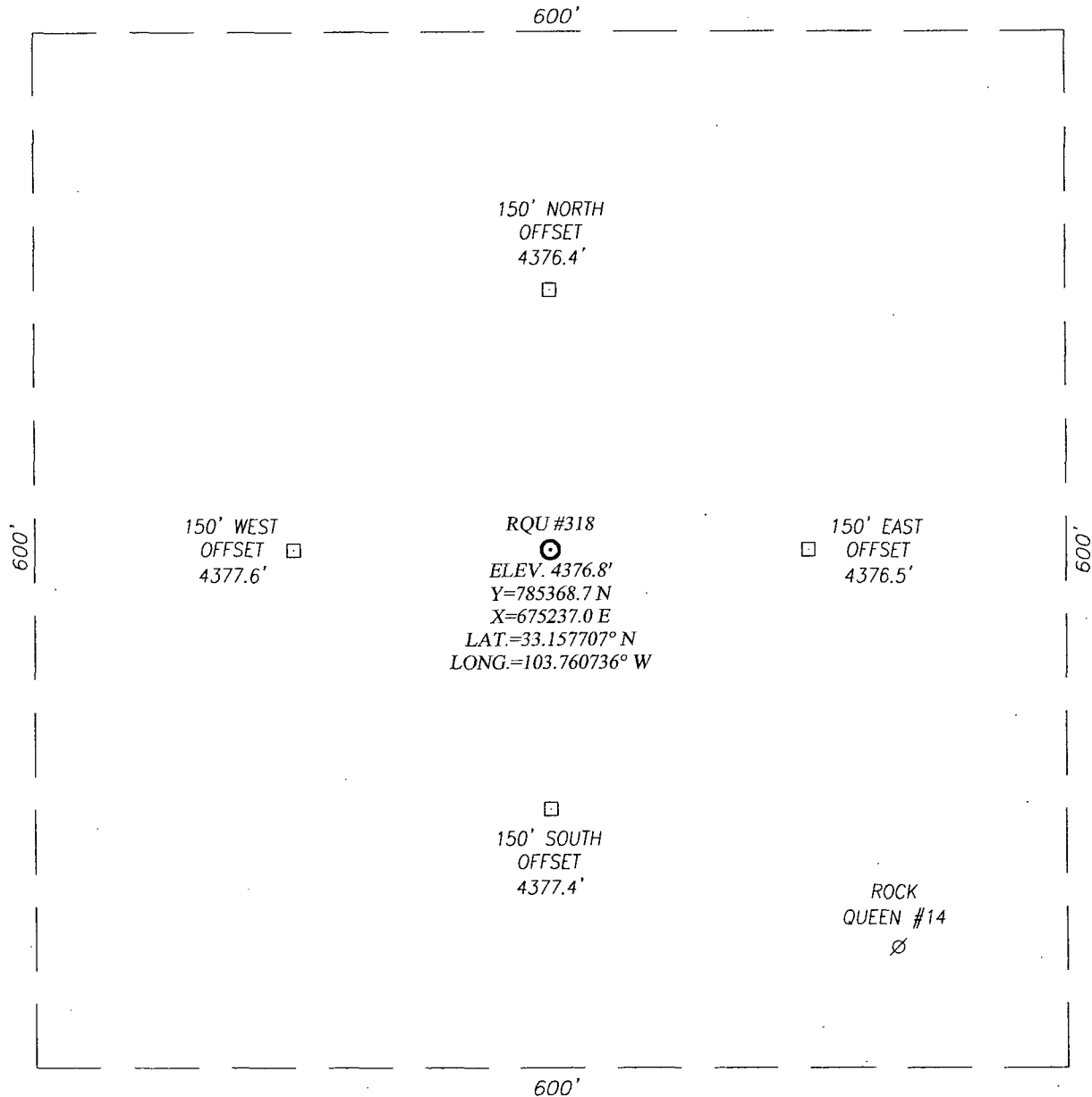
UL or lot No.	Section	Township	Range	Lot Idn	Feet from the	North/South line	Feet from the	East/West line	County
Dedicated Acres 40	Joint or Infill	Consolidation Code	Order No.						

NO ALLOWABLE WILL BE ASSIGNED TO THIS COMPLETION UNTIL ALL INTERESTS HAVE BEEN CONSOLIDATED OR A NON-STANDARD UNIT HAS BEEN APPROVED BY THE DIVISION

<p>Diagram showing well location with dimensions 1570' and 880'.</p>	<p>GEODETIC COORDINATES NAD 27 NME</p> <p>SURFACE LOCATION Y=785368.7 N X=675237.0 E</p> <p>LAT.=33.157707° N LONG.=103.760736° W</p>	<p>OPERATOR CERTIFICATION</p> <p>I hereby certify that the information herein is true and complete to the best of my knowledge and belief, and that this organization either owns a working interest or unleased mineral interest in the land including the proposed bottom hole location or has a right to drill this well at this location pursuant to a contract with an owner of such mineral or working interest, or to a voluntary pooling agreement or a compulsory pooling order heretofore entered by the division.</p> <p><i>Lisa Hunt</i> 11/25/13 Signature Date</p> <p>Lisa Hunt Printed Name</p> <p>lhunt@celeroenergy.com E-mail Address</p>
		<p>SURVEYOR CERTIFICATION</p> <p>I hereby certify that the well location shown on this plat was plotted from field notes of actual surveys made by me or under my supervision, and that the same is true and correct to the best of my belief.</p> <p>OCTOBER 31, 2013 Date of Survey</p> <p>Signature & Seal of Professional Surveyor:</p>
		<p>Professional Surveyor Seal for Ronald J. Eidson, New Mexico, 3239.</p>
		<p>Certificate Number Gary J. Eidson 12641 Ronald J. Eidson 3239</p> <p>BKL PROFESSIONAL WSC W.O.: 13.11.1207</p>

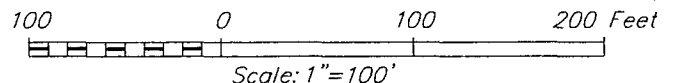
DEC 02 2013

PM



DIRECTIONS TO LOCATION

FROM THE INTERSECTION OF STATE HIGHWAYS 172 AND 249 (HAGGERMAN CUT-OFF) GO NORTH ON HWY. 172 APPROX. 10.8 MILES; TURN RIGHT AND GO SOUTHEAST APPROX. 2.2 MILES; TURN RIGHT AND GO SOUTH APPROX. 0.3 MILES; TURN LEFT AND GO EAST APPROX. 0.1 MILES; THE LOCATION STAKE IS 344 FEET TO THE NORTHEAST.



CELERO ENERGY II LP

RQU #318 WELL

LOCATED 880 FEET FROM THE SOUTH LINE
AND 1570 FEET FROM THE WEST LINE OF SECTION 30,
TOWNSHIP 13 SOUTH, RANGE 32 EAST, N.M.P.M.,
LEA COUNTY, NEW MEXICO

PROVIDING SURVEYING SERVICES
SINCE 1946

JOHN WEST SURVEYING COMPANY

412 N. DAL PASO
HOBBS, N.M. 88240
(575) 393-3117 www.jwsc.biz

Survey Date: 10/31/13

CAD Date: 11/11/13

Drawn By: BKL

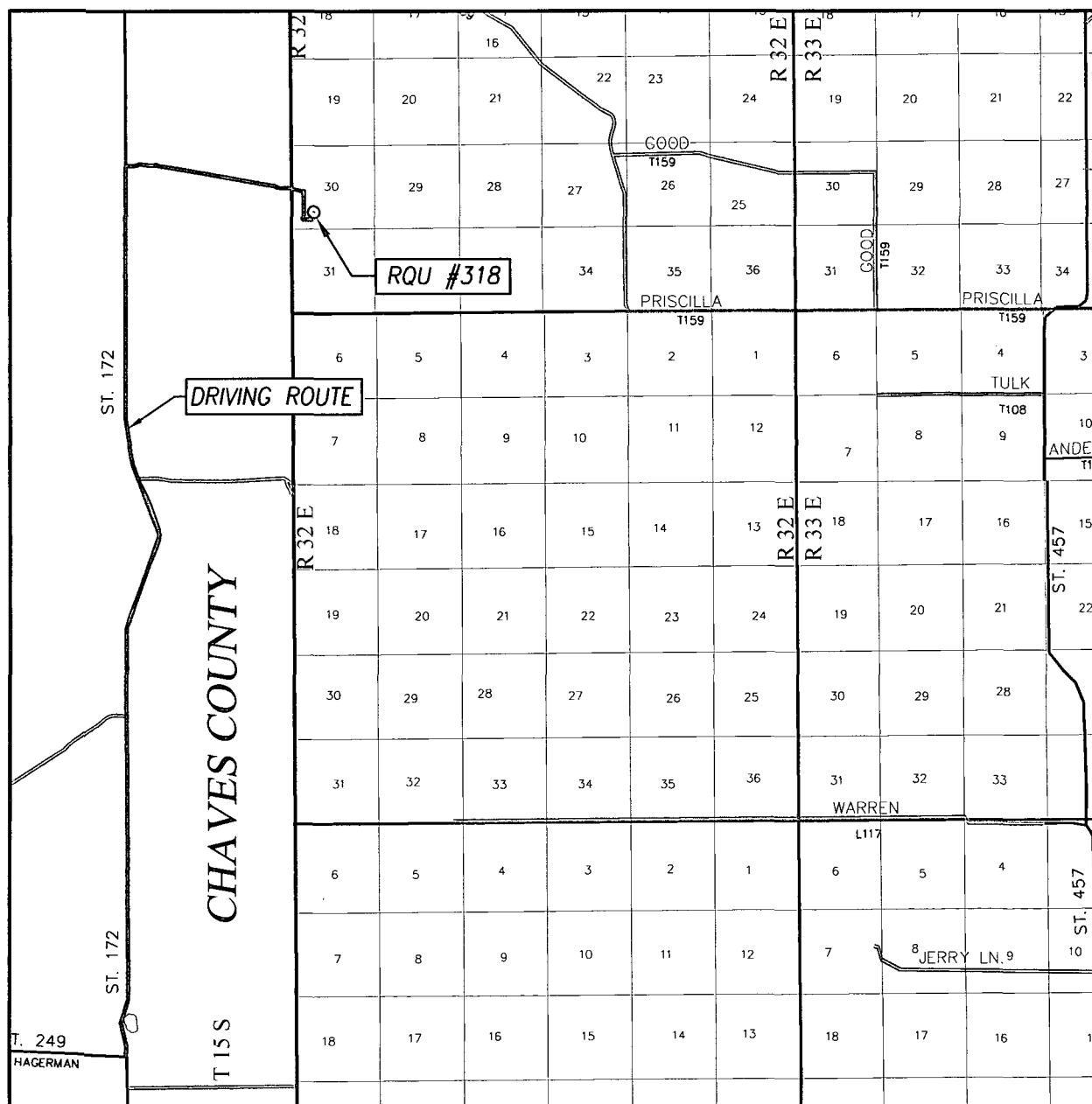
W.O. No.: 13111207

Rev: .

Rel. W.O.:

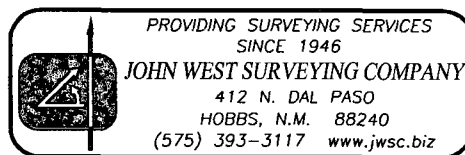
Sheet 1 of 1

NORTH

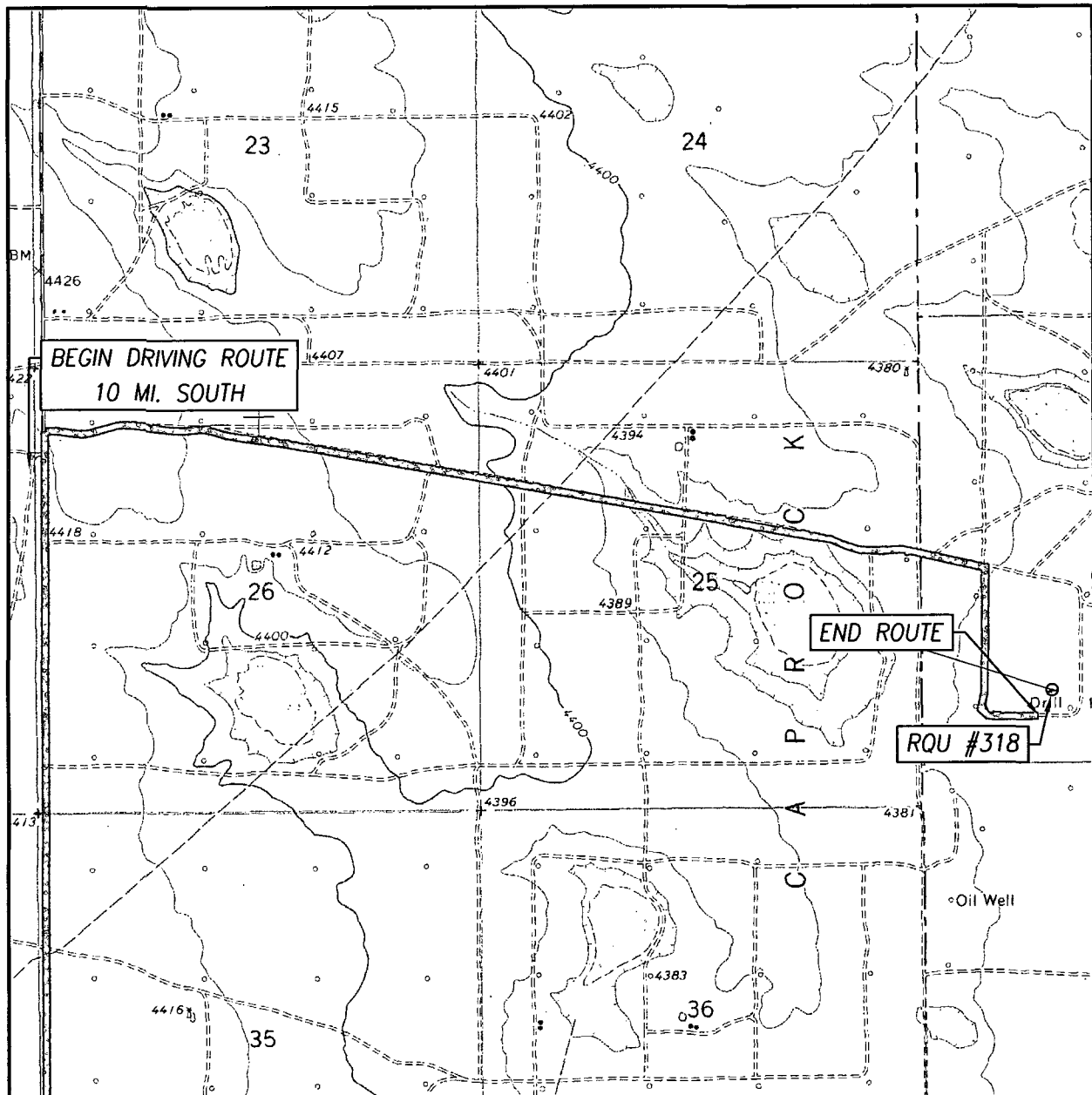


DRIVING ROUTE: SEE LOCATION MAP

LEASE _____ RQU _____



LOCATION VERIFICATION MAP



SCALE: 1" = 2000'

CONTOUR INTERVAL:
CAUDILL RANCH, N.M. - 10'

SEC. 30 TWP. 13-S RGE. 32-E

SURVEY N.M.P.M.

COUNTY LEA STATE NEW MEXICO

DESCRIPTION 880' FSL & 1570' FWL

ELEVATION 4377'

OPERATOR CELERO ENERGY II LP

LEASE RQU

U.S.G.S. TOPOGRAPHIC MAP
CAUDILL RANCH, N.M.

DIRECTIONS TO LOCATION

FROM THE INTERSECTION OF STATE HIGHWAYS 172 AND 249
(HAGGERMAN CUT-OFF) GO NORTH ON HWY. 172 APPROX. 10.8
MILES; TURN RIGHT AND GO SOUTHEAST APPROX. 2.2 MILES; TURN
RIGHT AND GO SOUTH APPROX. 0.3 MILES; TURN LEFT AND GO EAST
APPROX. 0.1 MILES; THE LOCATION STAKE IS 344 FEET TO THE
NORTHEAST.

PROVIDING SURVEYING SERVICES
SINCE 1946
JOHN WEST SURVEYING COMPANY
412 N. DAL PASO
HOBBS, N.M. 88240
(575) 393-3117 www.jwsc.biz