

District I
1625 N. French Dr., Hobbs, NM 88240
Phone: (575) 393-6161 Fax: (575) 393-0720
District II
811 S. First St., Artesia, NM 88210
Phone: (575) 748-1283 Fax: (575) 748-9720
District III
1000 Rio Brazos Road, Aztec, NM 87410
Phone: (505) 334-6178 Fax: (505) 334-4170
District IV
1220 S. St. Francis Dr., Santa Fe, NM 87505
Phone: (505) 476-3460 Fax: (505) 476-3462

HOBBS C.O.D.

DEC 09 2013

RECEIVED

State of New Mexico HOBBS OCD
Energy, Minerals & Natural Resources Department
OIL CONSERVATION DIVISION
1220 South St. Francis Dr.
Santa Fe, NM 87505

RECEIVED

Form C-102
Revised August 1, 2011
Submit one copy to appropriate
District Office

☐ AMENDED REPORT

WELL LOCATION AND ACREAGE DEDICATION PLAT

| | | |
|-----------------------------------|---|---|
| API Number 30-025-41550 | Pool Code 31920 | Pool Name Hobbs; Grayburg-San Andres |
| Property Code 19520 | Property Name NORTH HOBBS G/SA UNIT | Well Number 946 |
| OGRID No. 157984 | Operator Name OCCIDENTAL PERMIAN LTD. | Elevation 3661.6' |

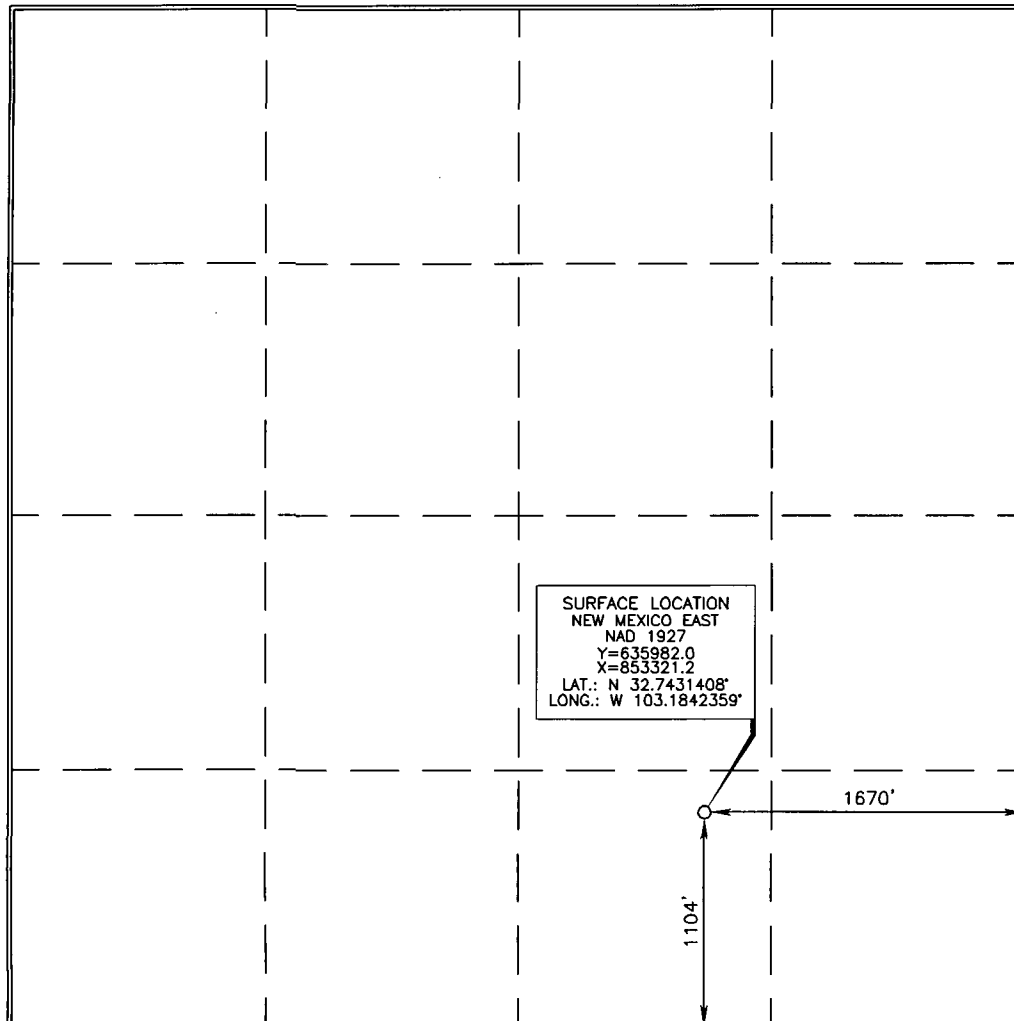
Surface Location

| UL or lot no. | Section | Township | Range | Lot Idn | Feet from the | North/South line | Feet from the | East/West line | County |
|---------------|---------|----------|-------------------|---------|---------------|------------------|---------------|----------------|--------|
| 0 | 18 | 18 SOUTH | 38 EAST, N.M.P.M. | | 1104' | SOUTH | 1670' | EAST | LEA |

Bottom Hole Location If Different From Surface

| UL or lot no. | Section | Township | Range | Lot Idn | Feet from the | North/South line | Feet from the | East/West line | County |
|-----------------------|----------------------|--------------------|-----------|---------|---------------|------------------|---------------|----------------|--------|
| | | | | | | | | | |
| Dedicated Acres 40 | Joint or Infill I | Consolidation Code | Order No. | | | | | | |

No allowable will be assigned to this completion until all interests have been consolidated or a non-standard unit has been approved by the division.



OPERATOR CERTIFICATION

I hereby certify that the information contained herein is true and complete to the best of my knowledge and belief, and that this organization either owns a working interest or unleased mineral interest in the land including the proposed bottom hole location or has a right to drill this well at this location pursuant to a contract with an owner of such a mineral or working interest, or to a voluntary pooling agreement or a compulsory pooling order heretofore entered by the division.

Mark Stephens 12/6/13
Signature Date

Mark Stephens
Printed Name
Mark Stephens@oxy.com
E-mail Address

SURVEYOR CERTIFICATION

I hereby certify that the well location shown on this plat was plotted from field notes of actual surveys made by me or under my supervision, and that the same is true and correct to the best of my belief.

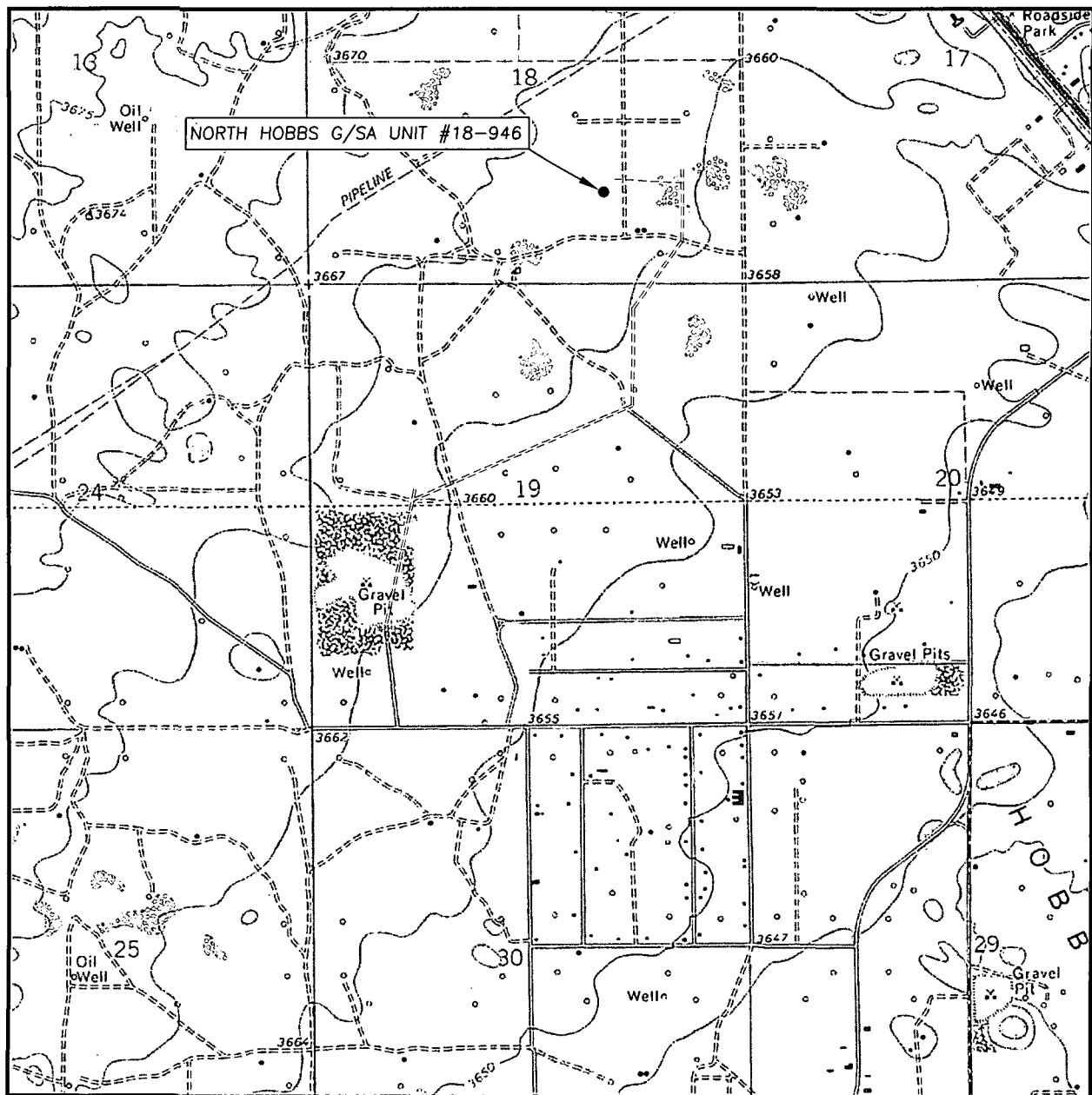
ERRY JASS
15079
OCTOBER 15, 2013
Date of Survey
Signature and Seal of Professional Surveyor

Tommy G. Jass 10/15/2013
Certificate Number 15079

WO# 131015WL-c (KA)

DEC 16 2013

LOCATION VERIFICATION MAP



SCALE: 1" = 2000'

CONTOUR INTERVAL: 10'

SEC. 18 TWP. 18-S RGE. 38-E

SURVEY N.M.P.M.

COUNTY LEA

DESCRIPTION 1104' FSL & 1670' FEL

ELEVATION 3661.6'

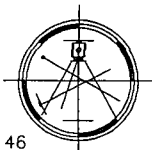
OPERATOR OCCIDENTAL PERMIAN LTD.

LEASE NORTH HOBBS G/SA UNIT #18-946

U.S.G.S. TOPOGRAPHIC MAP
HOBBS WEST, N.M.

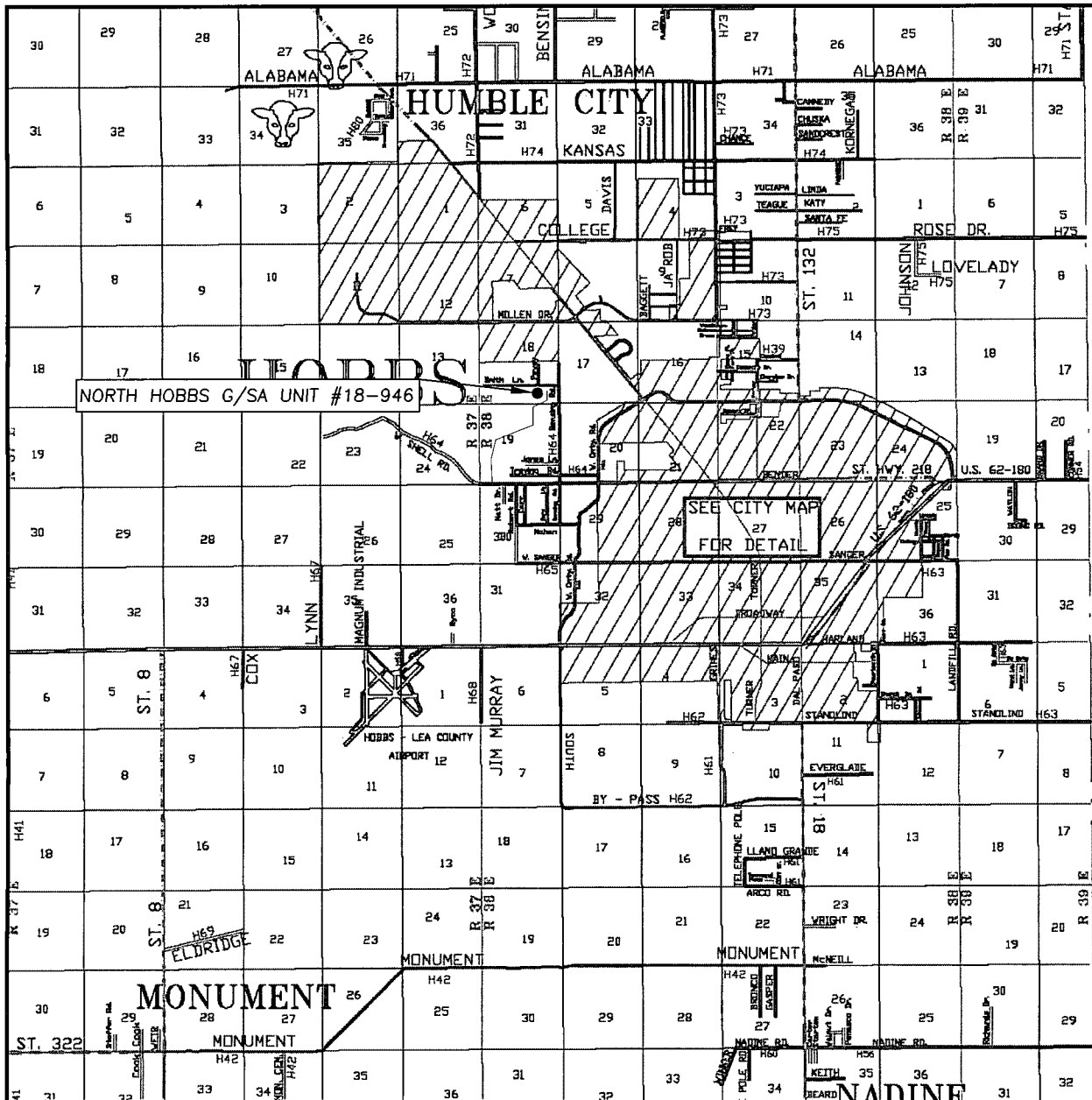
Asel Surveying

P.O. BOX 393 - 310 W. TAYLOR
HOBBS, NEW MEXICO - 575-393-9146



DEC 16 2013

VICINITY MAP



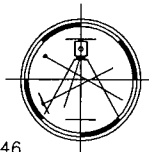
SEC. 18 TWP. 18-S RGE. 38-E
SURVEY N.M.P.M.
COUNTY LEA
DESCRIPTION 1104' FSL & 1670' FEL
ELEVATION 3661.6'
OPERATOR OCCIDENTAL PERMIAN LTD.

LEASE NORTH HOBBS G/SA UNIT #18-946

SCALE: 1" = 2 MILES

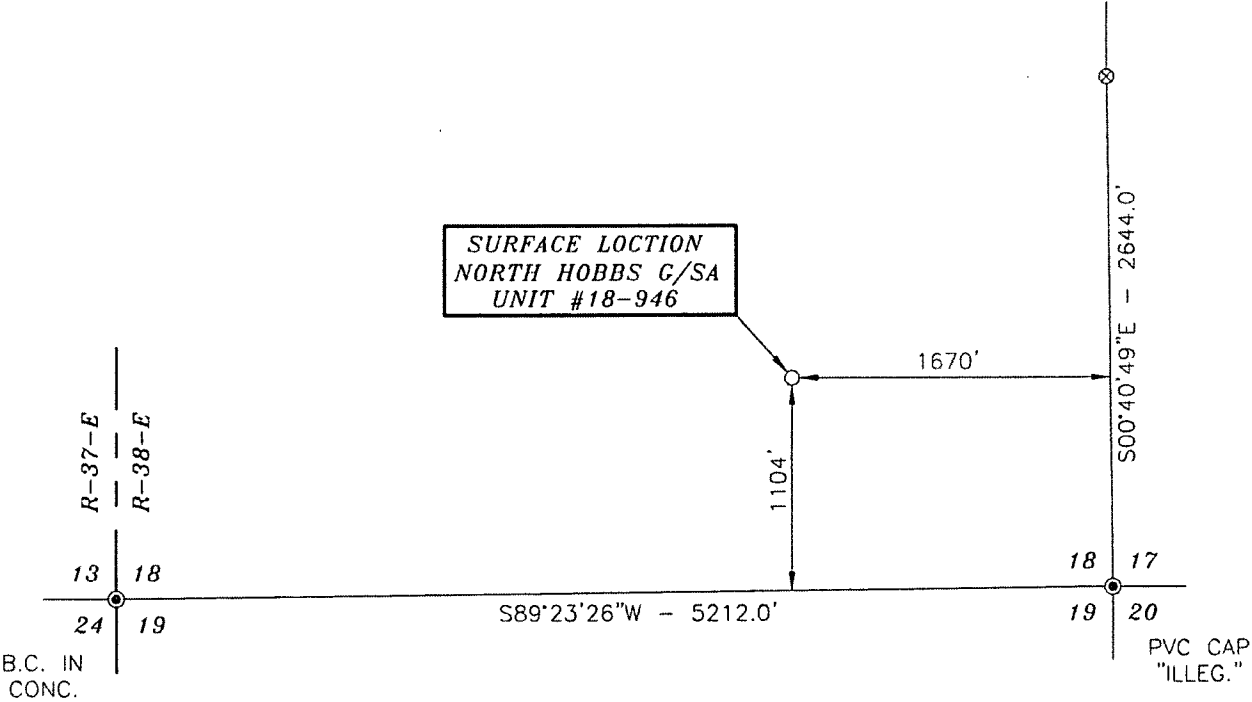
Asel Surveying

P.O. BOX 393 - 310 W. TAYLOR
HOBBS, NEW MEXICO - 575-393-9146



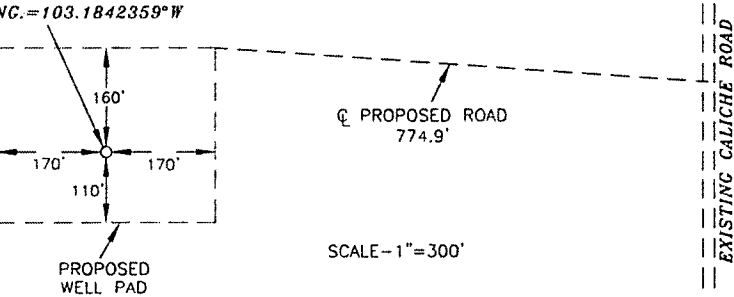
DIRECTIONS BEGINNING AT THE INTERSECTION OF WEST BENDER AND WEST COUNTY ROAD, GO WEST ON BENDER FOR 1.3 MILES, TURN RIGHT ON GRIFFIN ROAD AND GO NORTH FOR 0.5 MILES, TURN RIGHT ON CALICHE ROAD AND GO EAST FOR 0.6 MILES, TURN LEFT AND GO NORTH FOR 0.5 MILES, TURN LEFT ON PROPOSED ROAD AND GO WEST FOR 814.1 FEET TO LOCATION.

SECTION 18, TOWNSHIP 18 SOUTH, RANGE 38 EAST, N.M.P.M.,
LEA COUNTY
NEW MEXICO



Basis of Bearings - GPS Geodetic Measurements
NM East Zone (83) North American Datum of 1983

NORTH HOBBS G/SA
UNIT #18-946
ELEV. 3661.6'
(NAD 27)
LAT.=32.7431408°N
LONG.=103.1842359°W



DIRECTIONS:
BEGINNING AT THE INTERSECTION OF
WEST BENDER AND WEST COUNTY ROAD.
GO WEST ON BENDER FOR 1.3 MILES,
TURN RIGHT ON GRIFFIN ROAD AND GO
NORTH FOR 0.5 MILES, TURN RIGHT ON
CALICHE ROAD AND GO EAST FOR 0.6
MILES, TURN LEFT AND GO NORTH FOR
0.5 MILES, TURN LEFT ON PROPOSED
ROAD AND GO WEST FOR 774.9 FEET
TO LOCATION.



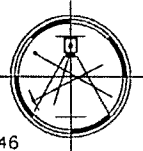
SURVEYORS CERTIFICATE

I, TERRY J. ASEL, NEW MEXICO PROFESSIONAL SURVEYOR
NO. 15079, DO HEREBY CERTIFY THAT I CONDUCTED AND AM
RESPONSIBLE FOR THIS SURVEY, THAT THIS SURVEY IS
TRUE AND CORRECT TO THE BEST OF MY KNOWLEDGE AND
BELIEF, AND MEETS THE "MINIMUM STANDARDS FOR
SURVEYING IN NEW MEXICO" AS ADOPTED BY THE NEW
MEXICO STATE BOARD OF REGISTRATION FOR
PROFESSIONAL ENGINEERS AND SURVEYORS.

Terry J. Asel 11/22/2013
Terry J. Asel N.M. R.P.L.S. No. 15079

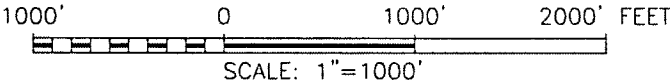
Asel Surveying

P.O. BOX 393 - 310 W. TAYLOR
HOBBS, NEW MEXICO - 575-393-9146



LEGEND

- - DENOTES FOUND MONUMENT AS NOTED
- ⊗ - DENOTES CALCULATED CORNER



OCCIDENTAL PERMIAN LTD.

NORTH HOBBS G/SA UNIT #18-946 LOCATED
AT 1104' FSL & 1670' FEL IN SECTION 18,
TOWNSHIP 18 SOUTH, RANGE 38 EAST,
N.M.P.M., LEA COUNTY, NEW MEXICO

| | |
|---------------------------------|----------------------------|
| Survey Date: 10/15/13 | Sheet 1 of 1 Sheets |
| W.O. Number:131015WL-c (Rev. A) | Drawn By: KA Rev: A |
| Date: 11/20/13 | 131015WL-c Scale:1\"=1000' |