

DISTRICT I  
1625 N. French Dr., Hobbs, NM 88240

DISTRICT II  
1301 W. Grand Avenue, Artesia, NM 88210

DISTRICT III  
1000 Rio Brazos Rd., Aztec, NM 87410

DISTRICT IV  
1220 S. St. Francis Dr., Santa Fe, NM 87505

State of New Mexico  
Energy, Minerals and Natural Resources Department

Form C-102  
Revised July 16, 2010

Submit one copy to appropriate  
District Office

**HOBBS OCD**  
**JAN 29 2014**  
**RECEIVED**

**OIL CONSERVATION DIVISION**  
1220 South St. Francis Dr.  
Santa Fe, New Mexico 87505

AMENDED REPORT

**WELL LOCATION AND ACREAGE DEDICATION PLAT**

API Number 30025 -41639	Pool Code 27220	Pool Name Gem; Bone Spring
Property Code 300531	Property Name MADURO Unit	Well Number 10 H
OGRID No. 162683	Operator Name CIMAREX ENERGY CO. OF COLORADO	Elevation 3598'

Surface Location

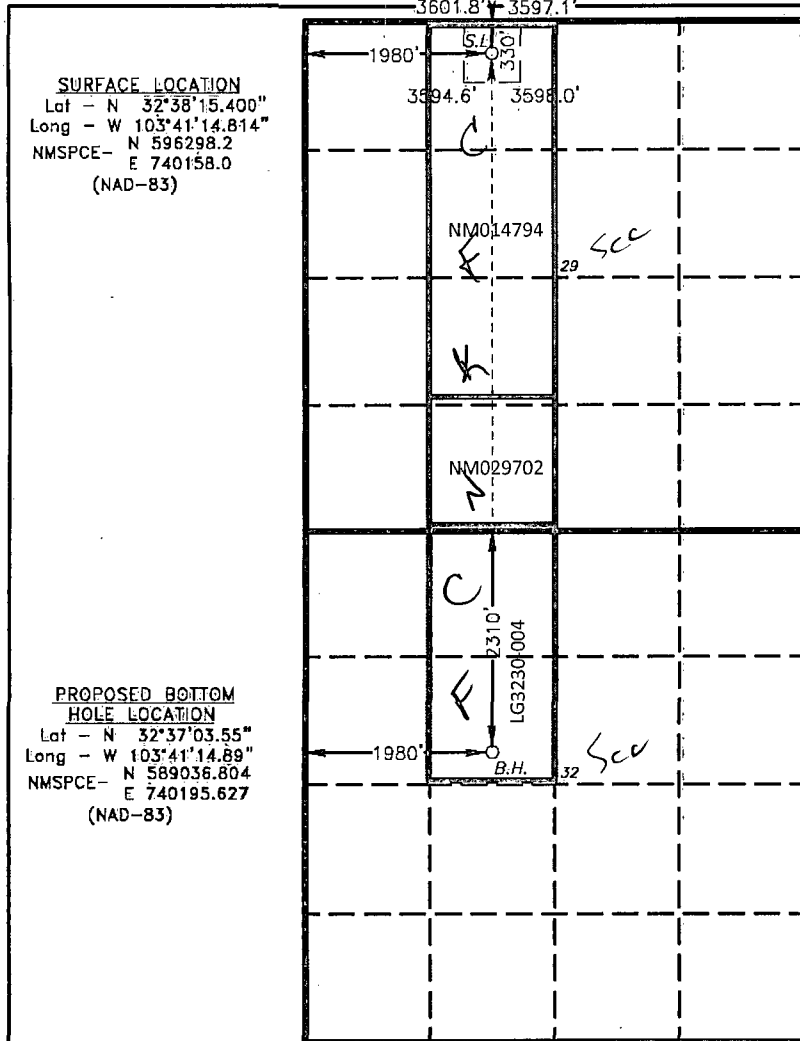
UL or lot No.	Section	Township	Range	Lot Idn	Feet from the	North/South line	Feet from the	East/West line	County
C	29	19 S	33 E		330	NORTH	1980	WEST	LEA

Bottom Hole Location If Different From Surface

UL or lot No.	Section	Township	Range	Lot Idn	Feet from the	North/South line	Feet from the	East/West line	County
F	32	19 S	33 E		2310	NORTH	1980	WEST	LEA

Dedicated Acres 240	Joint or Infill	Consolidation Code	Order No.
------------------------	-----------------	--------------------	-----------

NO ALLOWABLE WILL BE ASSIGNED TO THIS COMPLETION UNTIL ALL INTERESTS HAVE BEEN CONSOLIDATED  
OR A NON-STANDARD UNIT HAS BEEN APPROVED BY THE DIVISION



**SURFACE LOCATION**  
Lat - N 32°38'15.400"  
Long - W 103°41'14.814"  
NMSPC - N 596298.2  
E 740158.0  
(NAD-83)

**PROPOSED BOTTOM HOLE LOCATION**  
Lat - N 32°37'03.55"  
Long - W 103°41'14.89"  
NMSPC - N 589036.804  
E 740195.627  
(NAD-83)

**OPERATOR CERTIFICATION**

I hereby certify that the information contained herein is true and complete to the best of my knowledge and belief, and that this organization either owns a working interest or unleased mineral interest in the land including the proposed bottom hole location or has a right to drill this well at this location pursuant to a contract with an owner of such a mineral or working interest, or to a voluntary pooling agreement or a compulsory pooling order heretofore entered by the division.

Signature: *Terri Stathem* Date: 1/23/13  
Printed Name: Terri Stathem  
Email Address: tstathem@cimarex.com

**SURVEYOR CERTIFICATION**

I hereby certify that the well location shown on this plat was plotted from field notes of actual surveys made by me or under my supervision and that the same is true and correct to the best of my belief.

Date Surveyed: DECEMBER 22, 2012  
Signature & Seal of Professional Surveyor: *Gary L. Jones*  
Certificate No. Gary L. Jones 7977  
BASIN SURVEYS 23813

FEB 03 2014 *pm*