

Submit 1 Copy To Appropriate District Office
District I - (575) 393-6161
1625 N. French Dr., Hobbs, NM 88240
District II - (575) 748-1283
811 S. First St., Artesia, NM 88210
District III - (505) 334-6178
1000 Rio Brazos Rd., Aztec, NM 87410
District IV - (505) 476-3460
1220 S. St. Francis Dr., Santa Fe, NM 87505

State of New Mexico
Energy, Minerals and Natural Resources
HOBBS OCD
JAN 20 2014
RECEIVED
CONSERVATION DIVISION
1220 South St. Francis Dr.
Santa Fe, NM 87505

Form C-103
Revised July 18, 2013

WELL API NO. 30-025-06382
5. Indicate Type of Lease STATE <input type="checkbox"/> FEE <input checked="" type="checkbox"/>
6. State Oil & Gas Lease No.
7. Lease Name or Unit Agreement Name Taylor Glenn
8. Well Number 003
9. OGRID Number 873
10. Pool name or Wildcat Wantz; Abo (62700)

SUNDRY NOTICES AND REPORTS ON WELLS
(DO NOT USE THIS FORM FOR PROPOSALS TO DRILL OR TO DEEPEN OR PLUG BACK TO A DIFFERENT RESERVOIR. USE "APPLICATION FOR PERMIT" (FORM C-101) FOR SUCH PROPOSALS.)

1. Type of Well: Oil Well <input checked="" type="checkbox"/> Gas Well <input type="checkbox"/> Other
2. Name of Operator Apache Corporation
3. Address of Operator 303 Veterans Airpark Lane, Suite 1000 Midland, TX 79705
4. Well Location Unit Letter A 3546 feet from the North line and 330 feet from the East line Section 03 Township 21S Range 37E NMPM County Lea
11. Elevation (Show whether DR, RKB, RT, GR, etc.) 3493' GL

12. Check Appropriate Box to Indicate Nature of Notice, Report or Other Data

NOTICE OF INTENTION TO:

PERFORM REMEDIAL WORK ☐ PLUG AND ABANDON ☐
TEMPORARILY ABANDON ☒ CHANGE PLANS ☐
PULL OR ALTER CASING ☐ MULTIPLE COMPL ☐
DOWNHOLE COMMINGLE ☐
CLOSED-LOOP SYSTEM ☐
OTHER: ☐ 15 TA 5YR

SUBSEQUENT REPORT OF:

REMEDIAL WORK ☐ ALTERING CASING ☐
COMMENCE DRILLING OPNS. ☐ P AND A ☐
CASING/CEMENT JOB ☐
OTHER: ☐

13. Describe proposed or completed operations. (Clearly state all pertinent details, and give pertinent dates, including estimated date of starting any proposed work). SEE RULE 19.15.7.14 NMAC. For Multiple Completions: Attach wellbore diagram of proposed completion or recompletion.

Apache requests permission to TA this well, per the attached procedure.

**Condition of Approval: notify
OCD Hobbs office 24 hours
prior of running MIT Test & Chart**

Spud Date:

11/11/1951

Rig Release Date:

I hereby certify that the information above is true and complete to the best of my knowledge and belief.

SIGNATURE

Reesa Fisher

TITLE Sr. Staff Reg Analyst

DATE 1/22/2014

Type or print name Reesa Fisher

E-mail address: Reesa.Fisher@apachecorp.com

PHONE: (432) 818-1062

For State Use Only

APPROVED BY:

Maley S Brown

TITLE

Compliance Officer

DATE

2/20/2014

CONDITION OF APPROVAL: Notify OCD DISTRICT OFFICE
24 HOURS prior to running the TA Pressure Test.

FEB 20 2014

Taylor Glenn #3 (30-025-06382): Pull Production Equipment and TA Well

1/20/2014

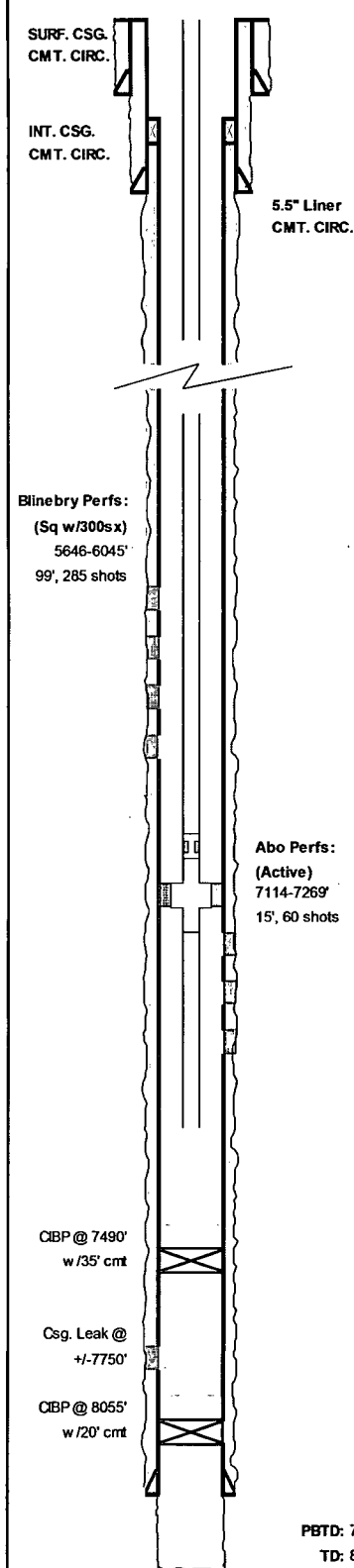
1. MIRU SU. POOH & LD w/ rods and pump. ND WH & NU BOPs. POOH w/ 2-3/8" tubing. PU & RIH w/csg. scraper on 2-3/8" tubing to +/-7100'
2. POOH inspecting (scanning) tubing, lay down red and green band joints
3. MIRU WL, RIH w/ 5-1/2 CIBP and set @ +/-7050', POOH. RIH w/ dump bailer and cap CIBP w/ min. 35' of cement, POOH. Wait for cement to set-up & P/T to 500 psi
4. RIH w/ 5-1/2 CIBP & set @ +/-5600', POOH. RIH w/ dump bailer and cap CIBP w/ min. 35' of cement, POOH. Wait for cement to set-up & P/T to 500 psi (chart record P/T for NM OCD)
5. RO WL. ND BOPs, NU suspension wellhead. RO SU

Apache Corporation

Taylor Glenn #3



WELL DIAGRAM (CURRENT CONFIGURATION)



WELL NAME:		Taylor Glenn #3		API:		30-025-06382					
LOCATION:		3546N'S/330°E, Unit A, Sec 3, T-21S, R-37E				COUNTY:		Lea Co, NM			
SPUD-TD DATE:		11/11/51-1/3/52				COMP. DATE:		1/9/1952			
PREPARED BY:		Michael Hunter				DATE:		1/17/2014			
TD (ft):		8,224.0		KB Elev. (ft):		3,494.0		KB to Ground (ft):		11.0	
PBTD (ft):		7,455.0		Ground Elev. (ft):		3,483.0					
CASING/TUBING		SIZE (IN)		WEIGHT (LB/FT)		GRADE		DEPTHS (FT)			
Surface Casing		13-3/8" (Cemented w/250 sx circ to surface)		48.0		J-55		0.00		219.0	
Int. Casing		8-5/8" (Cemented w/2000 sx circ to surface)		32.0		J-55		0.00		3,150.0	
Production Liner		5-1/2" (Cemented w/870sx circ to surface)		15.5/17.0		J-55		2,955.00		8,102.0	
Openhole								8,102.00		8,224.0	
Tubing		2-3/8"		4.7		J-55		0.00		7,285.0	
PRODUCTION TBG STRING											
ITEM		DESCRIPTION						LENGTH (FT)		Depth (FT)	
1		235 JTS 2-3/8" 4.7 LB/FT J-55 TBG									
2		TAC								7070.0	
3		SN								7285.0	
4											
5											
6											
7											
8											
9											
10											
PRODUCTION ROD STRING											
ITEM		DESCRIPTION						LENGTH (FT)		Btm (FT)	
1		49 JTS 7/8" RODS						1225.0			
2		240 JTS 3/4" RODS						6000.0			
3		BHP: 2" X 1-1/2" X 16'						16.0			
4											
5											
6											
7											
8											
9											
10											
SURFACE EQUIPMENT											
PUMPING UNIT SIZE:				C-228-210-74				MOTOR HP:			
PUMPING UNIT MAKE:				Parkersburg				MOTOR MAKE:			
PERFORATIONS											
Form.		Intervals						FT		SPF	
Blinebry		5646', 53', 55', 58', 61', 63', 68', 73', 80', 83', 87', 92', 97', 5701', 07', 13', 18', 23', 32', 35', 44', 51', 58', 64', 71', 73' 5937', 45', 50', 54', 96', 6003', 11', 16', 31', 37', 40', 45' (Squeezed)						37		1	
		5806'-32', 40'-50', 5892'-5918' (Squeezed)						62		4	
Abo		7114', 21', 34', 35', 36', 44', 48', 63', 70', 85', 7221', 29', 35', 49', 69' (Active)						15		4	
Ellen-burger		8102-8224' (Suspended)						122		OH	

Apache Corporation

Taylor Glenn #3



WELL DIAGRAM (PROPOSED CONFIGURATION)

SURF. CSG.
CMT. CIRC.

INT. CSG.
CMT. CIRC.

5.5" Liner
CMT. CIRC.

CBP @ +/-5600'
w /35' cmt

Blinbry Perfs:
(Sq w/300sx)
5646-6045'
99', 285 shots

CBP @ +/-7050'
w /35' cmt

Abo Perfs:
(Suspended)
7114-7269'
15', 60 shots

CBP @ 7490'
w /35' cmt

Csg. Leak @
+/-7750'

CBP @ 8055'
w /20' cmt

PBTD: 7,455.0
TD: 8,224.0

WELL NAME: Taylor Glenn #3		API: 30-025-06382			
LOCATION: 3546N'S/330'E, Unit A, Sec 3, T-21S, R-37E		COUNTY: Lea Co, NM			
SPUD-TD DATE: 11/11/51-1/3/52		COMP. DATE: 1/9/1952			
PREPARED BY: Michael Hunter		DATE: 1/17/2014			
TD (ft): 8,224.0	KB Elev. (ft): 3,494.0	KB to Ground (ft): 11.0			
PBTD (ft): 7,455.0	Ground Elev. (ft): 3,483.0				
CASING/TUBING	SIZE (IN)	WEIGHT (LB/FT)	GRADE	DEPTHS (FT)	
Surface Casing	13-3/8"	48.0	J-55	0.00	219.0
	(Cemented w/250 sx				
	circ to surface)				
Int. Casing	8-5/8"	32.0	J-55	0.00	3,150.0
	(Cemented w/2000 sx				
	circ to surface)				
Production Liner	5-1/2"	15.5/17.0	J-55	2,955.00	8,102.0
	(Cemented w/870sx				
	circ to surface)				
Openhole				8,102.00	8,224.0
Tubing					
PRODUCTION TBG STRING					
ITEM	DESCRIPTION			LENGTH (FT)	Depth (FT)
1					
2					
3					
4					
5					
6					
7					
8					
9					
10					
PRODUCTION ROD STRING					
ITEM	DESCRIPTION			LENGTH (FT)	Btm (FT)
1					
2					
3					
4					
5					
6					
7					
8					
9					
10					
SURFACE EQUIPMENT					
PUMPING UNIT SIZE:			MOTOR HP:		
PUMPING UNIT MAKE:			MOTOR MAKE:		
PERFORATIONS					
Form.	Intervals			FT	SPF
Blinebry	5646', 53', 55', 58', 61', 63', 68', 73', 80', 83', 87', 92', 97', 5701', 07', 13', 18', 23', 32', 35', 44', 51', 58', 64', 71', 73' 5937', 45', 50', 54', 96', 6003', 11', 16', 31', 37', 40', 45' (Squeezed)			37	1
	5806'-32', 40'-50', 5892'-5918' (Squeezed)			62	4
Abo	7114', 21', 34', 35', 36', 44', 48', 63', 70', 85', 7221', 29', 35', 49', 69' (Suspended)			15	4
Ellen-burger	8102-8224' (Suspended)			122	OH