

HOBBS OCD

District I
1625 N. French Dr., Hobbs, NM 88240
Phone: (575) 393-6161 Fax: (575) 393-0230

District II
511 S. First St., Artesia, NM 88210
Phone: (575) 748-1283 Fax: (575) 748-9720

District III
1000 Rio Brazos Road, Aztec, NM 87410
Phone: (505) 334-6178 Fax: (505) 334-6170

District IV
1220 S. St. Francis Dr., Santa Fe, NM 87505
Phone: (505) 476-3460 Fax: (505) 476-3462

FEB 20 2014

RECEIVED

State of New Mexico
Energy, Minerals & Natural Resources Department
OIL CONSERVATION DIVISION
1220 South St. Francis Dr.
Santa Fe, NM 87505

Form C-102
Revised August 1, 2011
Submit one copy to appropriate
District Office
☐ AMENDED REPORT

WELL LOCATION AND ACREAGE DEDICATION PLAT

¹ API Number 30-025-41373	² Pool Code 46310	³ Pool Name MIDWAY; BONE SPRING
⁴ Property Code 40108 313057	⁵ Property Name GUADALCANAL STATE COM	⁶ Well Number 1H
⁷ OGRID No. 6137	⁸ Operator Name DEVON ENERGY PRODUCTION COMPANY, L.P.	⁹ Elevation 3816.4

¹⁰ Surface Location

UL or lot no.	Section	Township	Range	Lot Idn	Feet from the	North/South line	Feet from the	East/West line	County
M	25	17 S	36 E		200	SOUTH	360	WEST	LEA

¹¹ Bottom Hole Location If Different From Surface

UL or lot no.	Section	Township	Range	Lot Idn	Feet from the	North/South line	Feet from the	East/West line	County
D	25	17 S	36 E		240	NORTH	360	WEST	LEA

¹² Dedicated Acres	¹³ Joint or Infill	¹⁴ Consolidation Code	¹⁵ Order No.
160			

No allowable will be assigned to this completion until all interests have been consolidated or a non-standard unit has been approved by the division.

<p>N89°21'15"E 2650.20 FT</p> <p>NW CORNER SEC. 25 LAT. = 32.8131528°N LONG. = 103.3165444°W NMSP EAST (FT) N = 661059.79 E = 853723.36</p> <p>240'</p> <p>BOTTOM OF HOLE</p> <p>BOTTOM OF HOLE LAT. = 32.8124949°N LONG. = 103.3153720°W NMSP EAST (FT) N = 660823.90 E = 854085.87</p> <p>W O CORNER SEC. 25 LAT. = 32.8058737°N LONG. = 103.3165342°W NMSP EAST (FT) N = 658411.41 E = 853751.96</p> <p>GUADALCANAL STATE COM #1H ELEV. = 3816.4' LAT. = 32.7991695°N (NAD83) LONG. = 103.3153701°W NMSP EAST (FT) N = 655975.58 E = 854133.11</p> <p>SURFACE LOCATION</p> <p>SW CORNER SEC. 25 LAT. = 32.7986192°N LONG. = 103.3165422°W NMSP EAST (FT) N = 655771.92 E = 853774.87</p> <p>S O CORNER SEC. 25 LAT. = 32.7986226°N LONG. = 103.3080239°W NMSP EAST (FT) N = 655798.41 E = 856392.48</p> <p>SE CORNER SEC. 25 LAT. = 32.7986256°N LONG. = 103.2993194°W NMSP EAST (FT) N = 655825.54 E = 859067.27</p> <p>200'</p> <p>360'</p> <p>S89°25'13"W 2618.15 FT</p> <p>S89°25'08"W 2675.36 FT</p>		<p>N89°21'15"E 2650.20 FT</p> <p>NE CORNER SEC. 25 LAT. = 32.8131757°N LONG. = 103.2992963°W NMSP EAST (FT) N = 661119.54 E = 859022.59</p> <p>NOTE: LATITUDE AND LONGITUDE COORDINATES ARE SHOWN USING THE NORTH AMERICAN DATUM OF 1983 (NAD83). LISTED NEW MEXICO STATE PLANE EAST COORDINATES ARE GRID (NAD83). BASIS OF BEARING AND DISTANCES USED ARE NEW MEXICO STATE PLANE EAST COORDINATES MODIFIED TO THE SURFACE.</p> <p>500°28'54"E 2754.38 FT</p> <p>500°29'08"E 2540.65 FT</p>
<p>¹⁷ OPERATOR CERTIFICATION</p> <p>I hereby certify that the information contained herein is true and complete to the best of my knowledge and belief, and that this organization either owns a working interest or unleased mineral interest in the land including the proposed bottom hole location or has a right to drill this well at this location pursuant to a contract with an owner of such a mineral or working interest, or to a voluntary pooling agreement or a compulsory pooling order heretofore entered by the division.</p> <p><i>[Signature]</i> 2/18/2014 Signature Date</p> <p>David H. Cook Regulatory Specialist Printed Name</p> <p>david.cook@dmv.com E-mail Address</p>		
<p>¹⁸ SURVEYOR CERTIFICATION</p> <p>I hereby certify that the well location shown on this plat was plotted from field notes of actual surveys made by me or under my supervision, and that the same is true and correct to the best of my belief.</p> <p>JANUARY 22, 2014 Date of Survey</p> <p><i>[Signature]</i> Signature and Seal of Professional Surveyor</p> <p>Certificate Number: JARAMILLO, J. JARAMILLO, PLS 12797 SURVEY NO. 2651</p>		

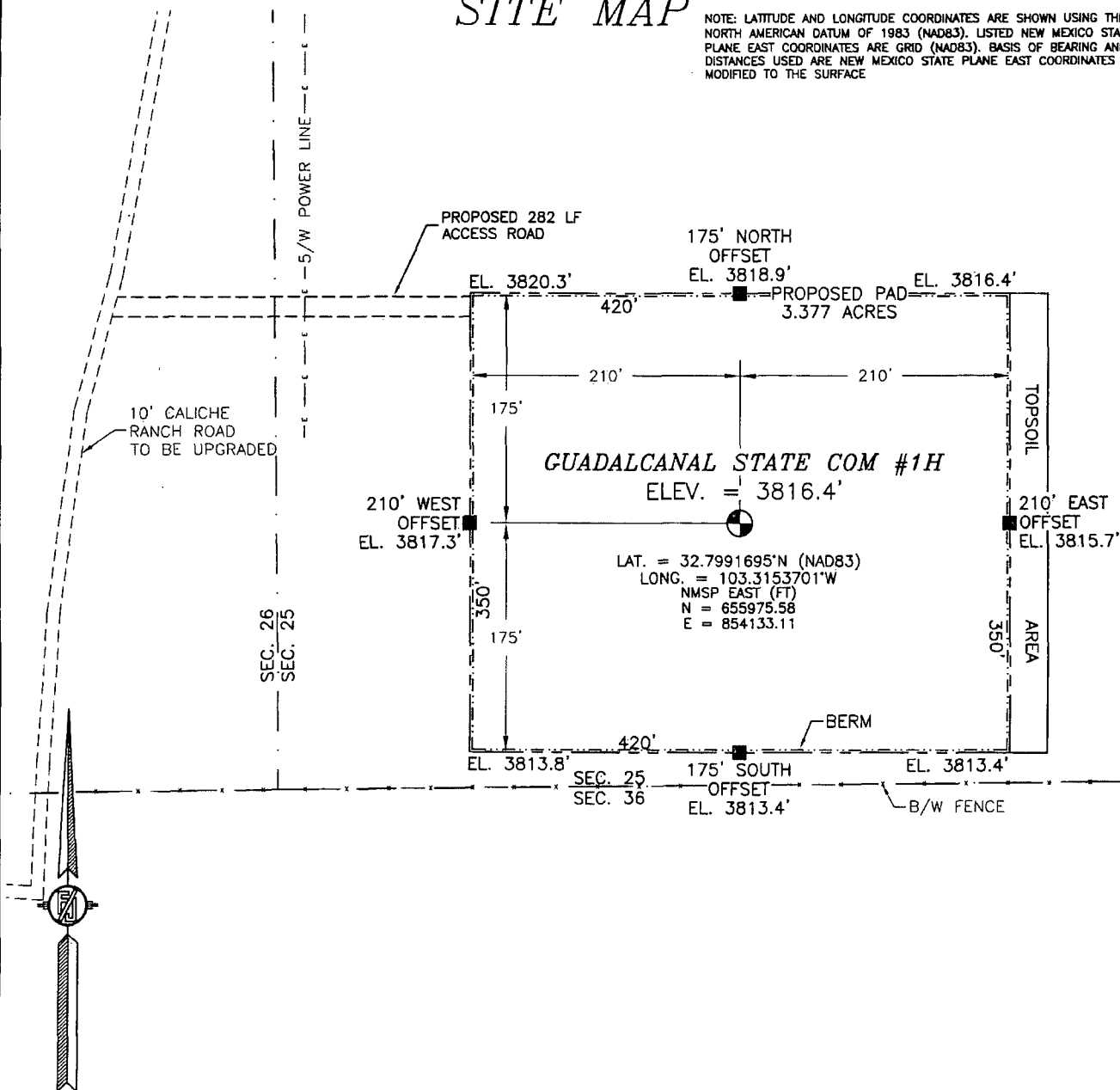
★ Amended

FEB 25 2014

SECTION 25, TOWNSHIP 17 SOUTH, RANGE 36 EAST, N.M.P.M.
LEA COUNTY, STATE OF NEW MEXICO

SITE MAP

NOTE: LATITUDE AND LONGITUDE COORDINATES ARE SHOWN USING THE NORTH AMERICAN DATUM OF 1983 (NAD83). LISTED NEW MEXICO STATE PLANE EAST COORDINATES ARE GRID (NAD83). BASIS OF BEARING AND DISTANCES USED ARE NEW MEXICO STATE PLANE EAST COORDINATES MODIFIED TO THE SURFACE



012 60 120 240

SCALE 1" = 120'

DIRECTIONS TO LOCATION

FROM US HIGHWAY 62-180 AND STATE HIGHWAY 483 GO NORTH ON STATE HIGHWAY 483 7.0 MILES, TURN RIGHT ON 10' CALICHE RANCH ROAD AND GO EAST 1.95 MILES, BEND LEFT AND GO NORTH 450' TO A PROPOSED ROAD SURVEY AND FOLLOW FLAGS EAST 282' TO THE PROPOSED NORTHWEST PAD CORNER FOR THIS LOCATION.

DEVON ENERGY PRODUCTION COMPANY, L.P.
GUADALCANAL STATE COM #1H
LOCATED 200 FT. FROM THE SOUTH LINE
AND 360 FT. FROM THE WEST LINE OF
SECTION 25, TOWNSHIP 17 SOUTH,
RANGE 36 EAST, N.M.P.M.
LEA COUNTY, STATE OF NEW MEXICO

JANUARY 27, 2014

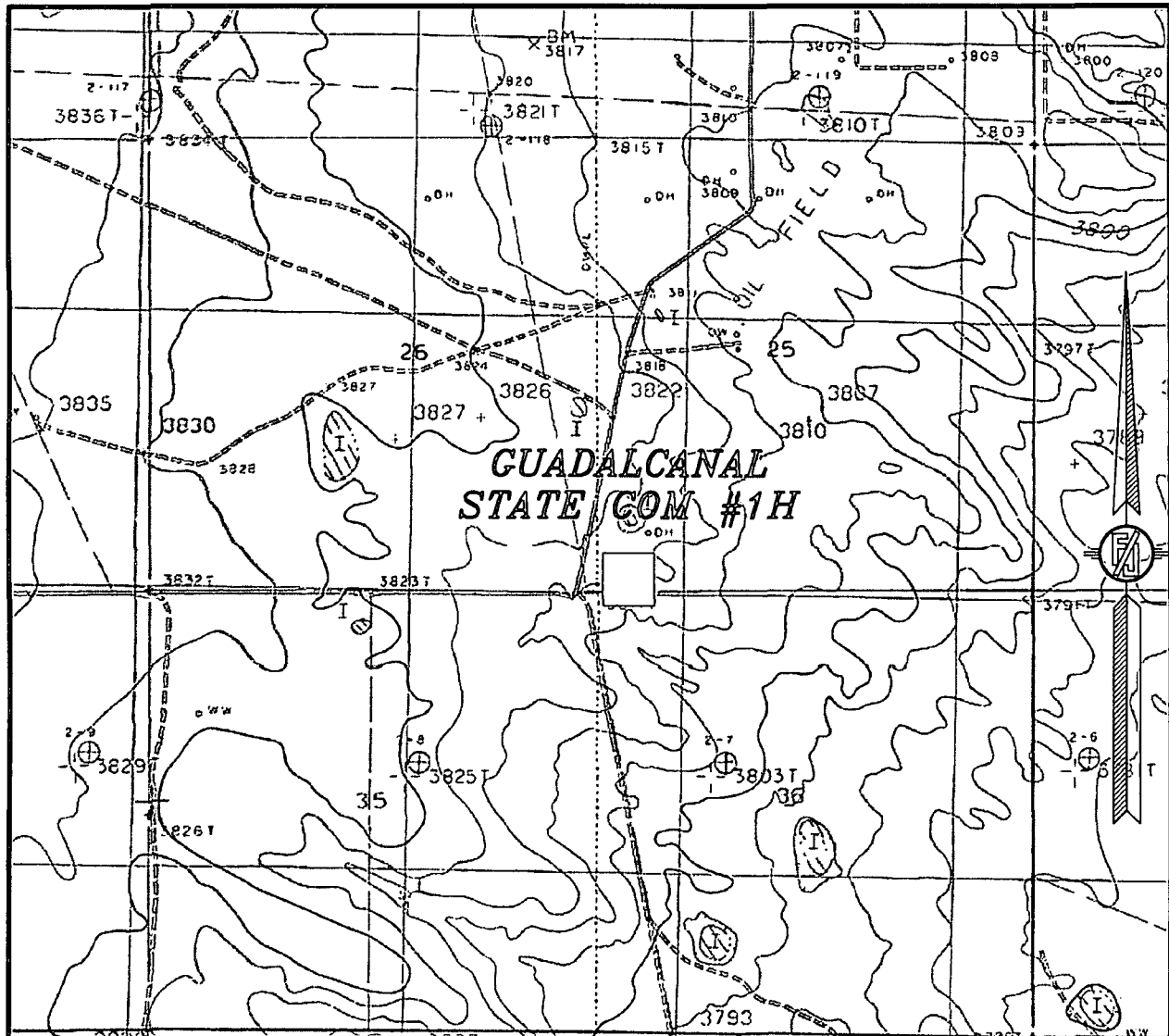
SURVEY NO. 2651

MADRON SURVEYING, INC.

301 SOUTH CANAL
(575) 234-3341

CARLSBAD, NEW MEXICO

SECTION 25, TOWNSHIP 17 SOUTH, RANGE 36 EAST, N.M.P.M.
LEA COUNTY, STATE OF NEW MEXICO
LOCATION VERIFICATION MAP



USGS QUAD MAP:
LOVINGTON SE

NOT TO SCALE

DEVON ENERGY PRODUCTION COMPANY, L.P.
GUADALCANAL STATE COM #1H
LOCATED 200 FT. FROM THE SOUTH LINE
AND 360 FT. FROM THE WEST LINE OF
SECTION 25, TOWNSHIP 17 SOUTH,
RANGE 36 EAST, N.M.P.M.
LEA COUNTY, STATE OF NEW MEXICO

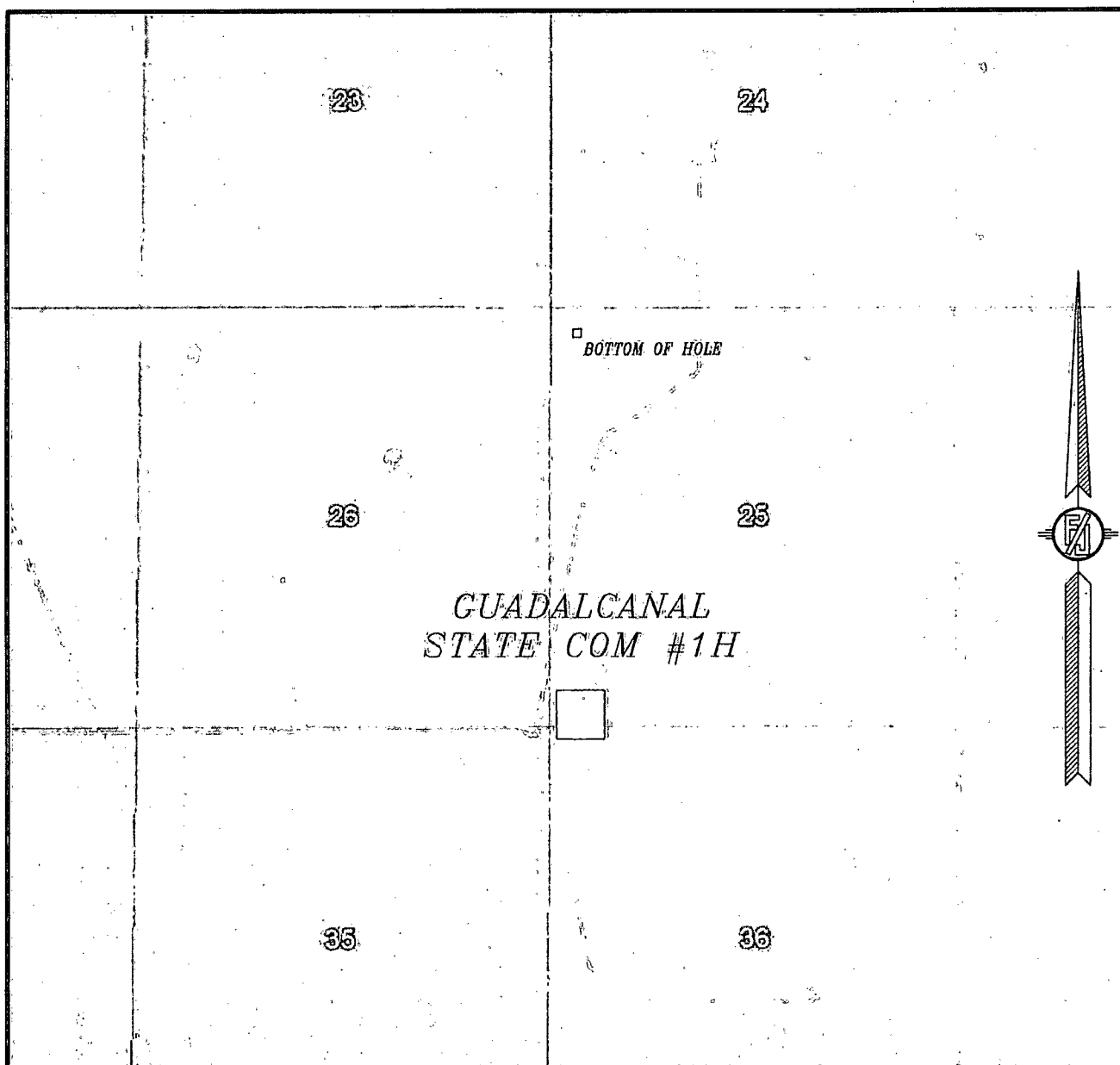
JANUARY 27, 2014

MADRON SURVEYING, INC. 301 SOUTH CANAL (575) 234-3341 SURVEY NO. 2651
CARLSBAD, NEW MEXICO

The map displays a section of Guadalupe County, Texas, with a focus on the area around the intersection of State Highway 483 and US Highway 62. The terrain is characterized by rolling hills and valleys, with several peaks labeled with elevations such as 1120, 1130, 1140, 1150, 1160, 1170, 1180, 1190, 1200, 1210, 1220, 1230, 1240, 1250, 1260, 1270, 1280, 1290, 1300, 1310, 1320, 1330, 1340, 1350, 1360, 1370, 1380, 1390, 1400, 1410, 1420, 1430, 1440, 1450, 1460, 1470, 1480, 1490, 1500, 1510, 1520, 1530, 1540, 1550, 1560, 1570, 1580, 1590, 1600, 1610, 1620, 1630, 1640, 1650, 1660, 1670, 1680, 1690, 1700, 1710, 1720, 1730, 1740, 1750, 1760, 1770, 1780, 1790, 1800, 1810, 1820, 1830, 1840, 1850, 1860, 1870, 1880, 1890, 1900, 1910, 1920, 1930, 1940, 1950, 1960, 1970, 1980, 1990, 2000. The map includes a grid of latitude and longitude lines, with latitude ranging from 31° 00' N to 31° 30' N and longitude from 100° 00' W to 100° 30' W. A scale bar indicates distances of 1.95 miles and 7.0 miles. A compass rose is located in the lower right corner. The map is overlaid with a grid of latitude and longitude lines.

SURVEY NO. 2651
CARLSBAD, NEW MEXICO

SECTION 25, TOWNSHIP 17 SOUTH, RANGE 36 EAST, N.M.P.M.
LEA COUNTY, STATE OF NEW MEXICO
AERIAL PHOTO



NOT TO SCALE
AERIAL PHOTO:
GOOGLE EARTH
MARCH 2013

DEVON ENERGY PRODUCTION COMPANY, L.P.
GUADALCANAL STATE COM #1H
LOCATED 200 FT. FROM THE SOUTH LINE
AND 360 FT. FROM THE WEST LINE OF
SECTION 25, TOWNSHIP 17 SOUTH,
RANGE 36 EAST, N.M.P.M.
LEA COUNTY, STATE OF NEW MEXICO

JANUARY 27, 2014

SURVEY NO. 2651

MADRON SURVEYING, INC. 301 SOUTH CANAL (575) 234-3341 CARLSBAD, NEW MEXICO