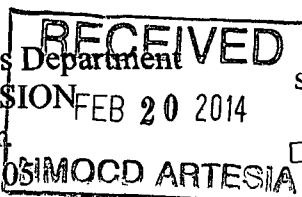


DISTRICT I  
1625 N. French Dr., Hobbs, NM 88240  
Phone: (575) 393-6161 Fax: (575) 393-0720  
DISTRICT II  
811 S. First St., Artesia, NM 87210  
Phone: (505) 748-1283 Fax: (505) 748-9720  
DISTRICT III  
1009 Rio Bravos Rd., Aztec, NM 87410  
Phone: (505) 334-6178 Fax: (505) 334-6720  
DISTRICT IV  
1220 S. St. Francis Dr., Santa Fe, NM 87505  
Phone: (505) 476-3460 Fax: (505) 476-3462

State of New Mexico  
Energy, Minerals & Natural Resources Department  
OIL CONSERVATION DIVISION  
1220 South St. Francis Dr.  
Santa Fe, New Mexico 87505



Form C-102

Revised August 1, 2011

Submit one copy to appropriate  
District Office

AMENDED REPORT

FEB 25 2014

WELL LOCATION AND ACREAGE DEDICATION PLAT

API Number <b>30-025-41123</b>	Pool Code <b>2200</b>	Pool Name <b>Antelope Ridge; Bone Spring</b>
Property Code <b>39826</b>	Property Name <b>MAD DOG 26 MD State Com</b>	Well Number <b>1H</b>
OGRID No. <b>14744</b>	Operator Name <b>MEWBOURNE OIL COMPANY</b>	Elevation <b>3455'</b>

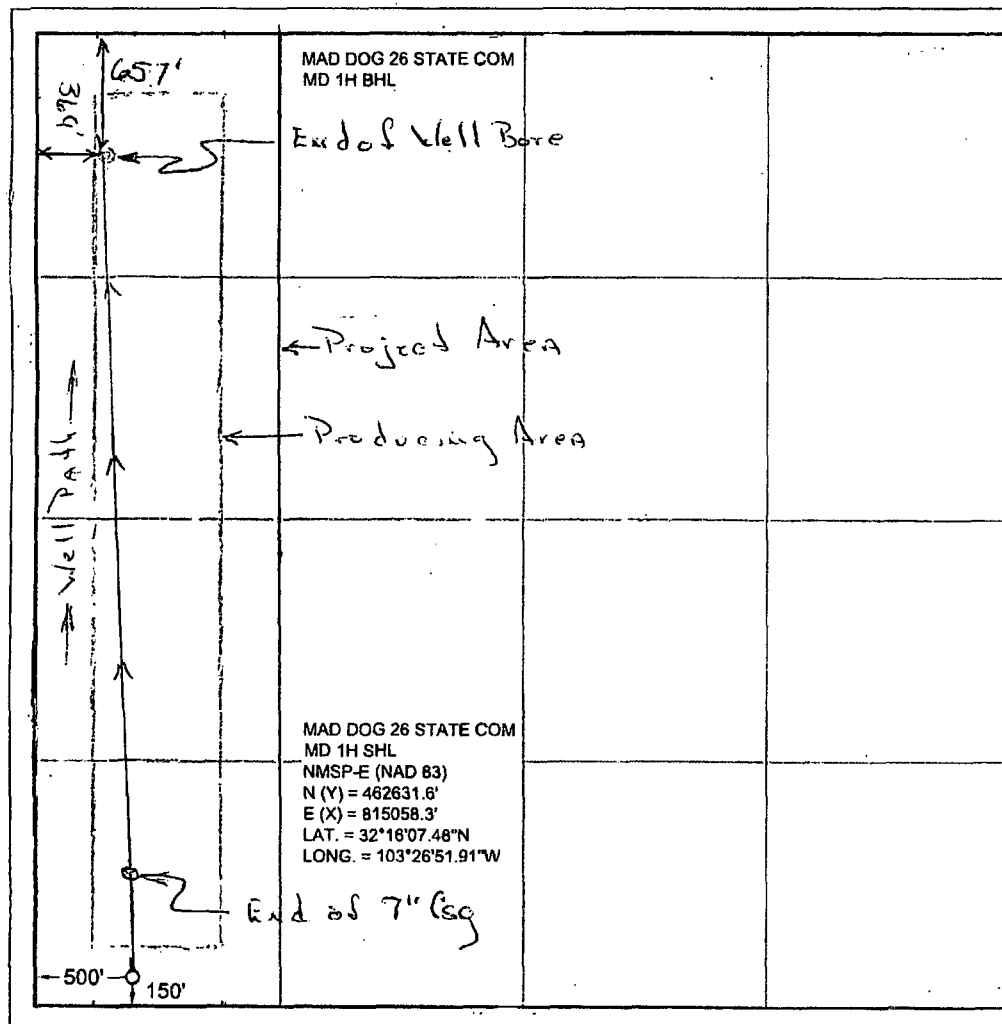
Surface Location

UL or lot no.	Section	Township	Range	Lot Idn	Feet from the	North/South line	Feet from the	East/West line	County
<b>M</b>	<b>26</b>	<b>23 S</b>	<b>34 E</b>		<b>150</b>	<b>SOUTH</b>	<b>500</b>	<b>WEST</b>	<b>LEA</b>

Bottom Hole Location If Different From Surface

UL or lot no.	Section	Township	Range	Lot Idn	Feet from the	North/South line	Feet from the	East/West line	County
<b>D</b>	<b>26</b>	<b>23 S</b>	<b>34 E</b>		<b>4616</b> <b>657</b>	<b>S</b> <b>NORTH</b>	<b>331</b> <b>569</b>	<b>WEST</b>	<b>LEA</b>
Dedicated Acres <b>160</b>	Joint or Infill	Consolidated Code	Order No.						

No allowable will be assigned to this completion until all interests have been consolidated or a non-standard unit has been approved by the division.



OPERATOR CERTIFICATION

I hereby certify that the information contained herein is true and complete to the best of my knowledge and belief, and that this organization either owns a working interest or unleased mineral interest in the land including the proposed bottom hole location or has a right to drill this well at this location pursuant to a contract with an owner of such a mineral or working interest, or to voluntary pooling agreement or a compulsory pooling order heretofore entered by the division.

Signature: *N. M. Young* Date: **2/12/14**  
Print Name: **N. M. Young**  
E-mail Address:

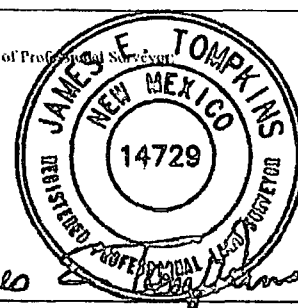
SURVEYORS CERTIFICATION

I hereby certify that the well location shown on this plat was plotted from field notes of actual surveys made by me or under my supervision, and that the same is true and correct to the best of my belief.

March 7, 2013

Date of Survey

Signature and Seal of Professional Surveyor



Job No.: **WTC48974**  
JAMES E. TOMPKINS 14729  
Certificate Number

MAR 06 2014