

District I  
1625 N. French Dr., Hobbs, NM 88240  
Phone: (575) 393-6161 Fax: (575) 393-6170  
District II  
811 S. First St., Artesia, NM 88210  
Phone: (575) 748-1283 Fax: (575) 748-9720  
District III  
1000 Rio Brazos Road, Aztec, NM 87410  
Phone: (505) 334-6178 Fax: (505) 334-6170  
District IV  
1220 S. St. Francis Dr., Santa Fe, NM 87505  
Phone: (505) 476-3460 Fax: (505) 476-3462

HOBBS OCD

MAR 13 2014

RECEIVED

State of New Mexico  
Energy, Minerals & Natural Resources Department  
OIL CONSERVATION DIVISION  
1220 South St. Francis Dr.  
Santa Fe, NM 87505

Form C-102  
Revised August 1, 2011  
Submit one copy to appropriate  
District Office  
☒ AMENDED REPORT

WELL LOCATION AND ACREAGE DEDICATION PLAT

<sup>1</sup> API Number 30-025-41693		<sup>2</sup> Pool Code 98064		<sup>3</sup> Pool Name WC-025 G-06 S183608B; BONE SPRING	
<sup>4</sup> Property Code 40427		<sup>5</sup> Property Name DUNKEL 7 STATE			<sup>6</sup> Well Number 1H
<sup>7</sup> OGRID No. 6137		<sup>8</sup> Operator Name DEVON ENERGY PRODUCTION COMPANY, L.P.			<sup>9</sup> Elevation 3866.4

<sup>10</sup> Surface Location

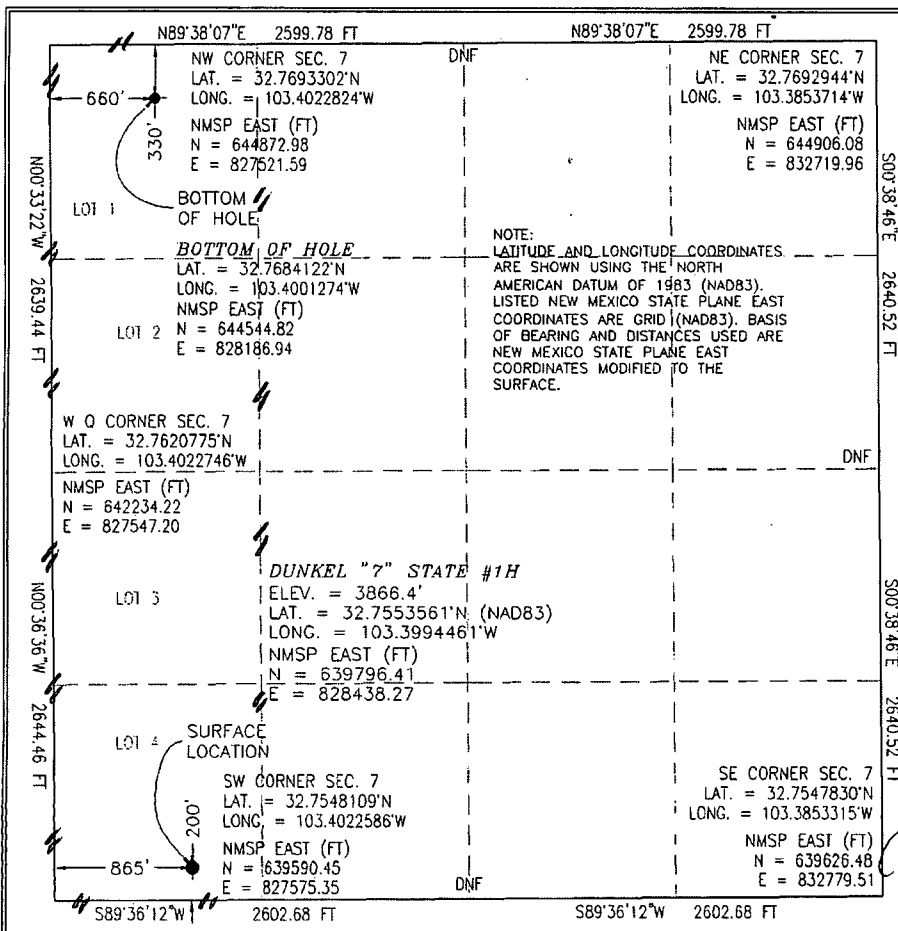
UL or lot no.	Section	Township	Range	Lot Idn	Feet from the	North/South line	Feet from the	East/West line	County
4	7	18 S	36 E		200	SOUTH	865	WEST	LEA

<sup>11</sup> Bottom Hole Location If Different From Surface

UL or lot no.	Section	Township	Range	Lot Idn	Feet from the	North/South line	Feet from the	East/West line	County
1	7	18 S	36 E		330	NORTH	660	WEST	LEA

<sup>12</sup> Dedicated Acres 148.28	<sup>13</sup> Joint or Infill	<sup>14</sup> Consolidation Code	<sup>15</sup> Order No.
-----------------------------------------	-------------------------------	----------------------------------	-------------------------

No allowable will be assigned to this completion until all interests have been consolidated or a non-standard unit has been approved by the division.



<sup>17</sup> OPERATOR CERTIFICATION

I hereby certify that the information contained herein is true and complete to the best of my knowledge and belief, and that this organization either owns a working interest or unleased mineral interest in the land including the proposed bottom hole location or has a right to drill this well at this location pursuant to a contract with an owner of such a mineral or working interest, or to a voluntary pooling agreement or a compulsory pooling order heretofore entered by the division.

Signature: *[Signature]* Date: 3/12/2014

Printed Name: David H. Cook

E-mail Address: david.cook@dvn.com

<sup>18</sup> SURVEYOR CERTIFICATION

I hereby certify that the well location shown on this plat was plotted from field notes of actual surveys made by me or under my supervision, and that the same is true and correct to the best of my belief.

Signature and Seal of Professional Surveyor: *[Signature]*  
Date of Survey: MARCH 12, 2014  
Certificate Number: 12797

Signature and Seal of Professional Surveyor: *[Signature]*  
Certificate Number: VILMON F. JARAMILLO, PLS 12797  
SURVEY NO. 2621A

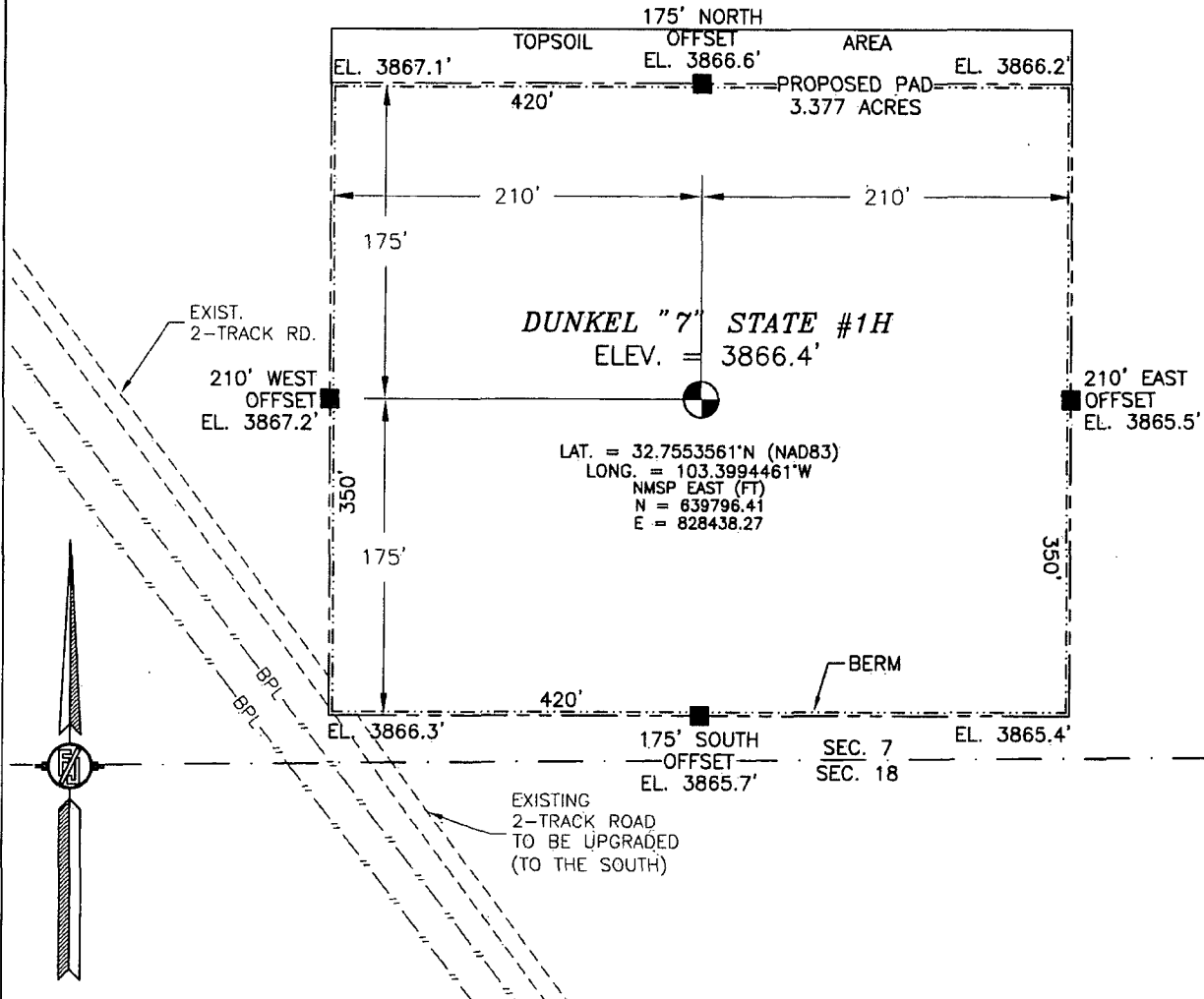
PP: 200 FSL & 660 FWL

\* Amended

MAR 18 2014

SECTION 7, TOWNSHIP 18 SOUTH, RANGE 36 EAST, N.M.P.M.  
LEA COUNTY, STATE OF NEW MEXICO  
**SITE MAP**

NOTE: LATITUDE AND LONGITUDE COORDINATES ARE SHOWN USING THE NORTH AMERICAN DATUM OF 1983 (NAD83). LISTED NEW MEXICO STATE PLANE EAST COORDINATES ARE GRID (NAD83). BASIS OF BEARING AND DISTANCES USED ARE NEW MEXICO STATE PLANE EAST COORDINATES MODIFIED TO THE SURFACE



010 50 100 200  
SCALE 1" = 100'

**DIRECTIONS TO LOCATION**

FROM THE INTERSECTION OF US HIGHWAY 62-180 AND NM HIGHWAY 483 AT ARKANSAS JUNCTION GO NORTH ON NM HIGHWAY 483 2.51 MILES JUST PAST SQUIRES ROAD, YOU ARE TURNING INTO AN EXISTING PAD WITH BATTERIES, AT SOUTHWEST CORNER OF PAD IS A CATTLE GUARD, GO WEST 2.15 MILES TO A PIPE LINE FACILITY, ABOUT 50' NORTH IS A GATE, GO NORTH PAST GATE TO ROAD INTERSECTION, TAKE LEFT FORK ALONG NORTH SIDE OF EXISTING PIPE LINE, GO NORTHWEST 1.22 MILES TO SOUTHWEST CORNER OF PAD.

DEVON ENERGY PRODUCTION COMPANY, L.P.  
**DUNKEL "7" STATE #1H**  
LOCATED 200 FT. FROM THE SOUTH LINE  
AND 865 FT. FROM THE WEST LINE OF  
SECTION 7, TOWNSHIP 18 SOUTH,  
RANGE 36 EAST, N.M.P.M.  
LEA COUNTY, STATE OF NEW MEXICO

MARCH 12, 2014

SURVEY NO. 2621A

MADRON SURVEYING, INC.

301 SOUTH CANAL  
(575) 234-3341

CARLSBAD, NEW MEXICO

A detailed topographic map of Dunkel State #1H. The map features a grid system with horizontal and vertical lines. Elevation contours are shown as wavy lines with numerical labels such as 3846, 3855, 3861, 3863, 3869, 3874, 3877, 3880, and 3888. A central area is labeled "DUNKEL '7' STATE #1H" in a stylized font. Various symbols are present, including a large square, a circle with a cross, and a circle with a dot. A compass rose is located in the upper right corner. The map also includes a scale bar and a north arrow.

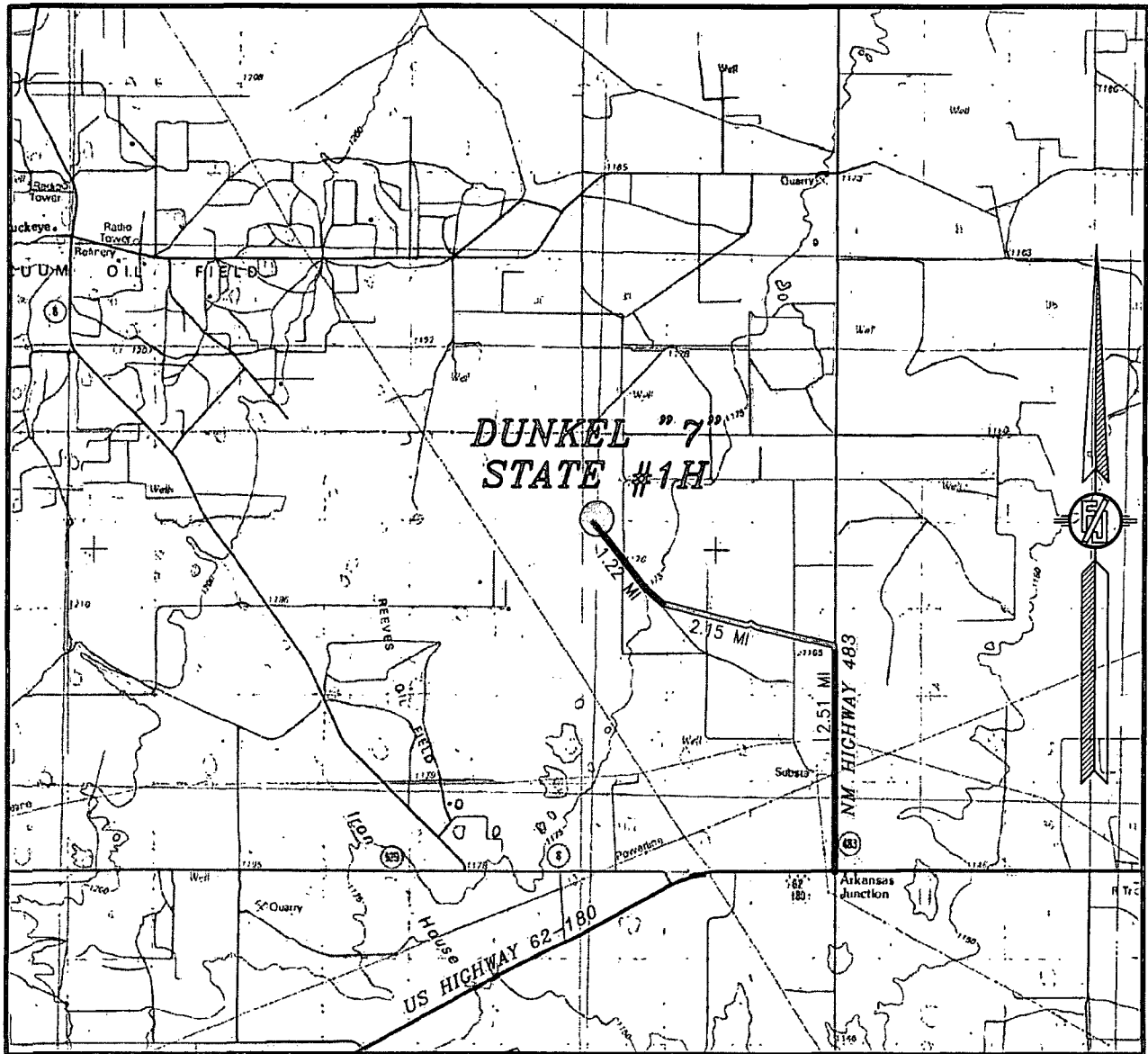
**NOT TO SCALE**

MARCH 12, 2014

MADRON SURVEYING, INC. 301 SOUTH CANAL  
(575) 234-3341

CARLSBAD, NEW MEXICO

SECTION 7, TOWNSHIP 18 SOUTH, RANGE 36 EAST, N.M.P.M.  
LEA COUNTY, STATE OF NEW MEXICO  
VICINITY MAP



NOT TO SCALE

DEVON ENERGY PRODUCTION COMPANY, L.P.

**DUNKEL "7" STATE #1H**

LOCATED 200 FT. FROM THE SOUTH LINE  
AND 865 FT. FROM THE WEST LINE OF  
SECTION 7, TOWNSHIP 18 SOUTH,  
RANGE 36 EAST, N.M.P.M.  
LEA COUNTY, STATE OF NEW MEXICO

MARCH 12, 2014

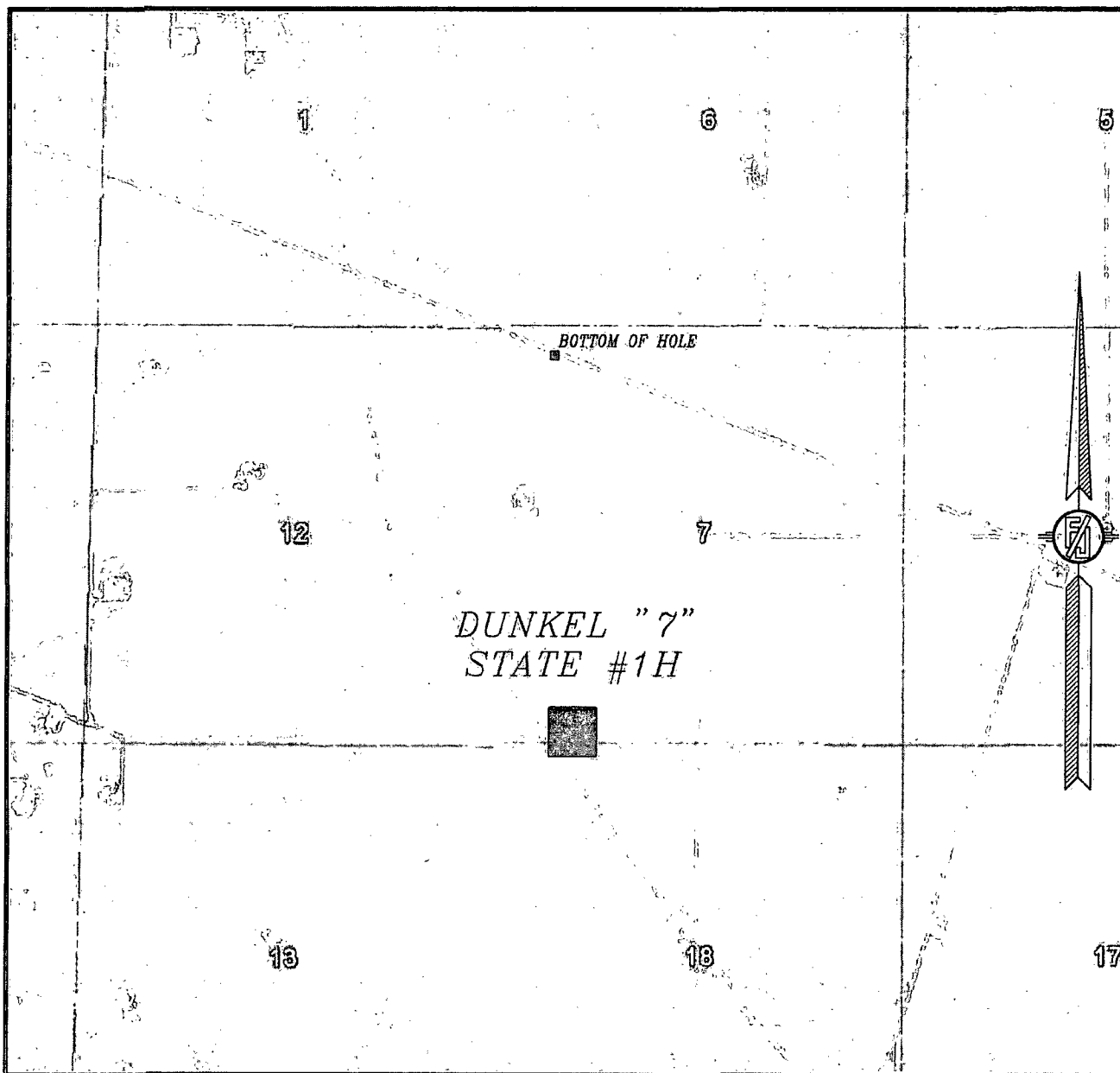
**DIRECTIONS TO LOCATION**

FROM THE INTERSECTION OF US HIGHWAY 62-180 AND NM HIGHWAY 483 AT ARKANSAS JUNCTION GO NORTH ON NM HIGHWAY 483 2.51 MILES JUST PAST SQUIRES ROAD, YOU ARE TURNING INTO AN EXISTING PAD WITH BATTERIES, AT SOUTHWEST CORNER OF PAD IS A CATTLE GUARD, GO WEST 2.15 MILES TO A PIPE LINE FACILITY, ABOUT 50' NORTH IS A GATE, GO NORTH PAST GATE TO ROAD INTERSECTION, TAKE LEFT FORK ALONG NORTH SIDE OF EXISTING PIPE LINE, GO NORTHWEST 1.22 MILES TO SOUTHWEST CORNER OF PAD.

MADRON SURVEYING, INC. 301 SOUTH CANAL  
(575) 234-3341

SURVEY NO. 2621A  
CARLSBAD, NEW MEXICO

SECTION 7, TOWNSHIP 18 SOUTH, RANGE 36 EAST, N.M.P.M.  
LEA COUNTY, STATE OF NEW MEXICO  
AERIAL PHOTO



NOT TO SCALE  
AERIAL PHOTO:  
GOOGLE EARTH  
MARCH 2012

DEVON ENERGY PRODUCTION COMPANY, L.P.

**DUNKEL "7" STATE #1H**

LOCATED 200 FT. FROM THE SOUTH LINE  
AND 865 FT. FROM THE WEST LINE OF  
SECTION 7, TOWNSHIP 18 SOUTH,  
RANGE 36 EAST, N.M.P.M.  
LEA COUNTY, STATE OF NEW MEXICO

MARCH 12, 2014

SURVEY NO. 2621A

MADRON SURVEYING, INC. 301 SOUTH CANAL (575) 234-3341 CARLSBAD, NEW MEXICO