

District I  
1625 N. French Dr., Hobbs, NM 88240  
District II  
1301 W. Grand Avenue, Artesia, NM 88210  
District III  
1000 Rio Brazos Road, Aztec, NM 87410  
District IV  
1220 S. St. Francis Dr., Santa Fe, NM 87505

HOBBS OCD

State of New Mexico  
Energy Minerals and Natural Resources

Form C-101  
June 16, 2008

FEB 17 2014

Oil Conservation Division  
1220 South St. Francis Dr.  
Santa Fe, NM 87505

Submit to appropriate District Office

☐ AMENDED REPORT

RECEIVED

APPLICATION FOR PERMIT TO DRILL, RE-ENTER, DEEPEN, PLUGBACK, OR ADD A ZONE

<sup>1</sup> Operator Name and Address Texland Petroleum-Hobbs, LLC 777 Main Street, Suite 3200 Fort Worth, Texas 76102		<sup>2</sup> OGRID Number 113315
<sup>3</sup> Property Code 40397	<sup>4</sup> Property Name Simmons Estate	<sup>5</sup> Well No. #2
<sup>9</sup> Proposed Pool 1 Shipp Strawn		<sup>10</sup> Proposed Pool 2 HOBBS OCD

Surface Location

UL or lot no.	Section	Township	Range	Lot Idn	Feet from the	North/South line	Feet from the	East/West line	County
L	3	17S	37E		1650	South	970	West	Lea

Proposed Bottom Hole Location If Different From Surface

UL or lot no.	Section	Township	Range	Lot Idn	Feet from the	North/South line	Feet from the	East/West line	County

Additional Well Information

<sup>11</sup> Work Type Code N	<sup>12</sup> Well Type Code O	<sup>13</sup> Cable/Rotary R	<sup>14</sup> Lease Type Code P	<sup>15</sup> Ground Level Elevation 3769'
<sup>16</sup> Multiple N	<sup>17</sup> Proposed Depth 11,500'	<sup>18</sup> Formation Strawn (Detrital)	<sup>19</sup> Contractor Norton	<sup>20</sup> Spud Date ASAP

Proposed Casing and Cement Program

Hole Size	Casing Size	Casing weight/foot	Setting Depth	Sacks of Cement	Estimated TOC
17 1/2"	13 3/8"	48#	450' - 2100'	460 sks	surface
12 1/4"			2350'		
11"	8 5/8"	32#	4500'	1650 sks	surface
7 7/8"	5 1/2"	17#	11,500'	2000 sks	surface

<sup>22</sup> Describe the proposed program. If this application is to DEEPEN or PLUG BACK, give the data on the present productive zone and proposed new productive zone. Describe the blowout prevention program, if any. Use additional sheets if necessary.

Texland plans to drill the proposed well to a total depth of 11,500' and complete as a Shipp Strawn (Detrital) producing well. During this procedure we plan to use the Closed-Loop System and haul contents to the required disposal. After reaching TD the completion procedures will be determined after evaluation of the well.

Attached is the well plat C-102, location and vicinity maps, the proposed diagram of the rig layout, the blowout preventer diagram, the proposed wellbore schematic, and a Closed Loop Design Plan and System Layout diagram.

NSL-7036

<sup>23</sup> I hereby certify that the information given above is true and complete to the best of my knowledge and belief.		OIL CONSERVATION DIVISION	
Signature: Vickie Smith		Approved by: [Signature]	
Printed name: Vickie Smith		Title: Petroleum Engineer	
Title: Regulatory Analyst		Approval Date: 03/18/14	Expiration Date: 03/18/16
E-mail Address: vsmith@texpetro.com			
Date: 2/17/14	Phone: 817-336-2750	Conditions of Approval Attached <input type="checkbox"/>	

MAR 19 2014 PM

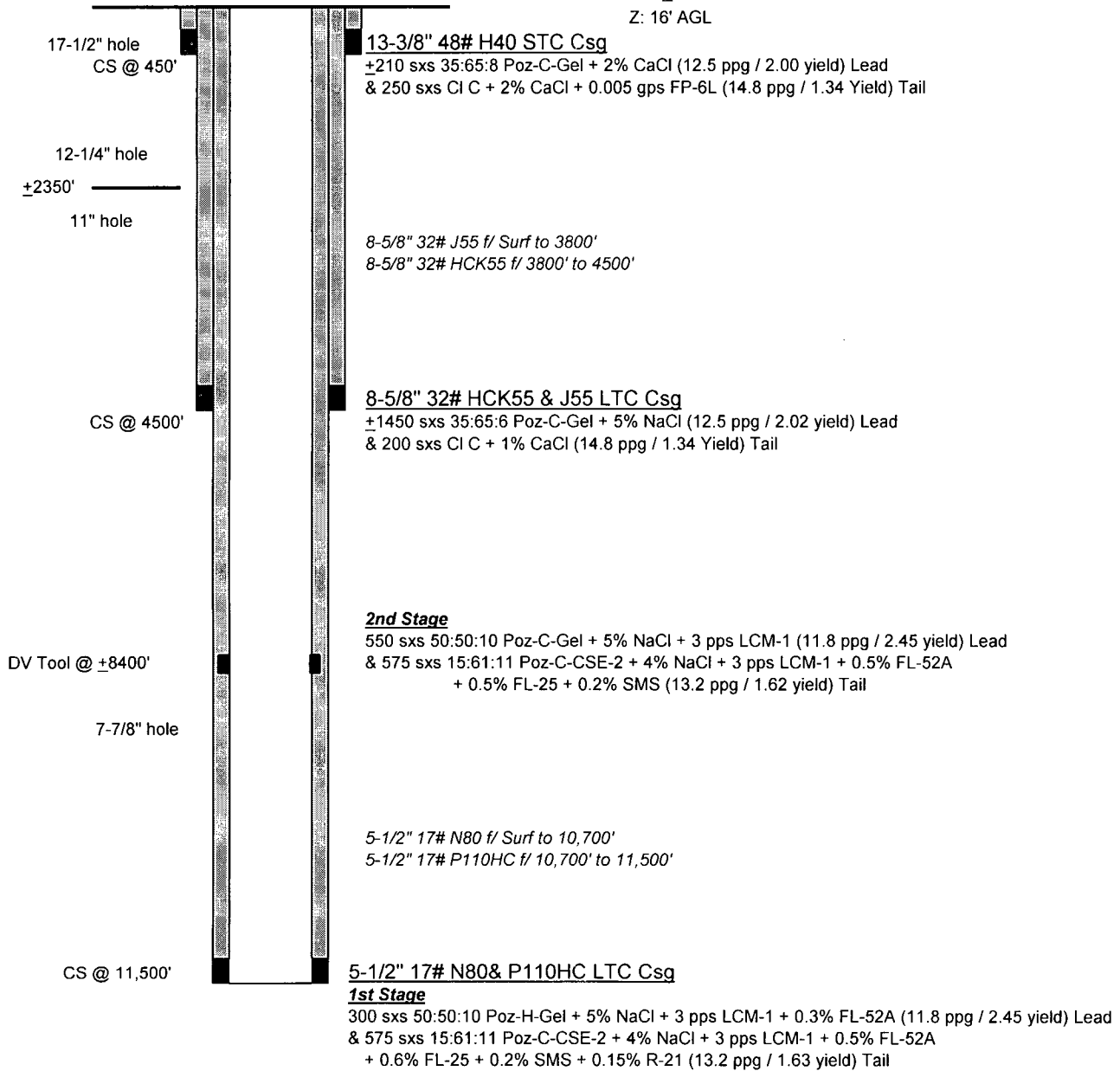
## Simmons Estate #2

### Wellbore Schematic

KB: +3725'

GL: +3709'

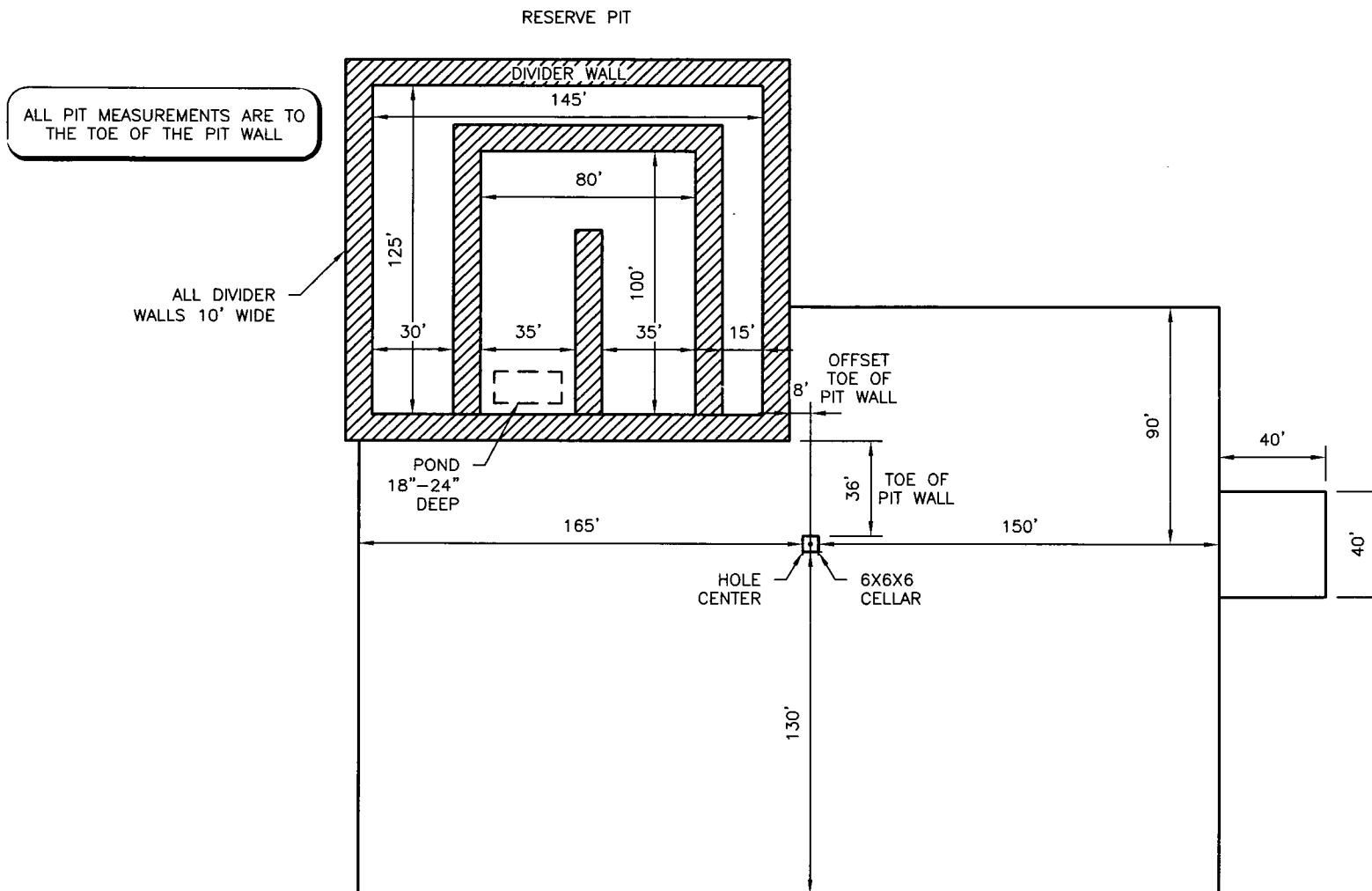
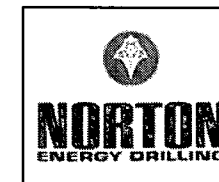
Z: 16' AGL



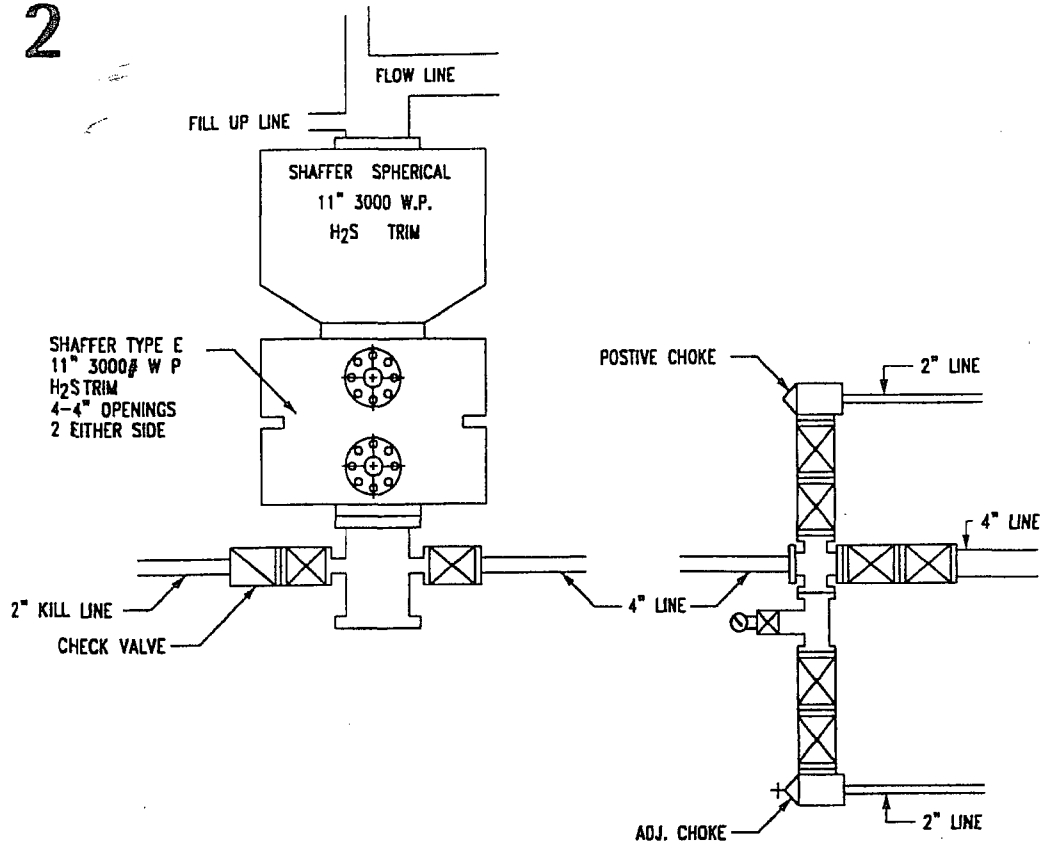
G.Mendenhall  
4/30/2013



## RIG #2 LOCATION PLAT



# RIG 2



# CLOSED-LOOP SYSTEM DESIGN AND CONSTRUCTION

