

HOBBS OCD

DISTRICT I

1625 N. French Dr., Hobbs, NM 88240

Phone (505) 393-8161 Fax: (505) 393-0720

DISTRICT II

811 S. First St., Artesia, NM 88210

Phone (505) 748-1283 Fax: (505) 748-9720

DISTRICT III

1000 Rio Brazos Rd., Aztec, NM 87410

Phone (505) 334-6178 Fax: (505) 334-6178

DISTRICT IV

1220 S. St. Francis Dr., Santa Fe, NM 87505

Phone (505) 478-3460 Fax: (505) 478-3462

State of New Mexico
Energy, Minerals and Natural Resources Department

OIL CONSERVATION DIVISION

1220 South St. Francis Dr.

Santa Fe, New Mexico 87505

Form C-102

Revised August 1, 2011

Submit one copy to appropriate
District Office

WELL LOCATION AND ACREAGE DEDICATION PLAT

☐ AMENDED REPORT

| | | |
|-----------------------------------|--|--|
| API Number 30-025-41039 | Pool Code 23006 | Pool Name Enrica Monument, Grayburg-San Andres |
| Property Code 302708 | Property Name NMGSAU | Well Number 387 |
| OGRID No. 873 | Operator Name APACHE CORPORATION | Elevation 3644' |

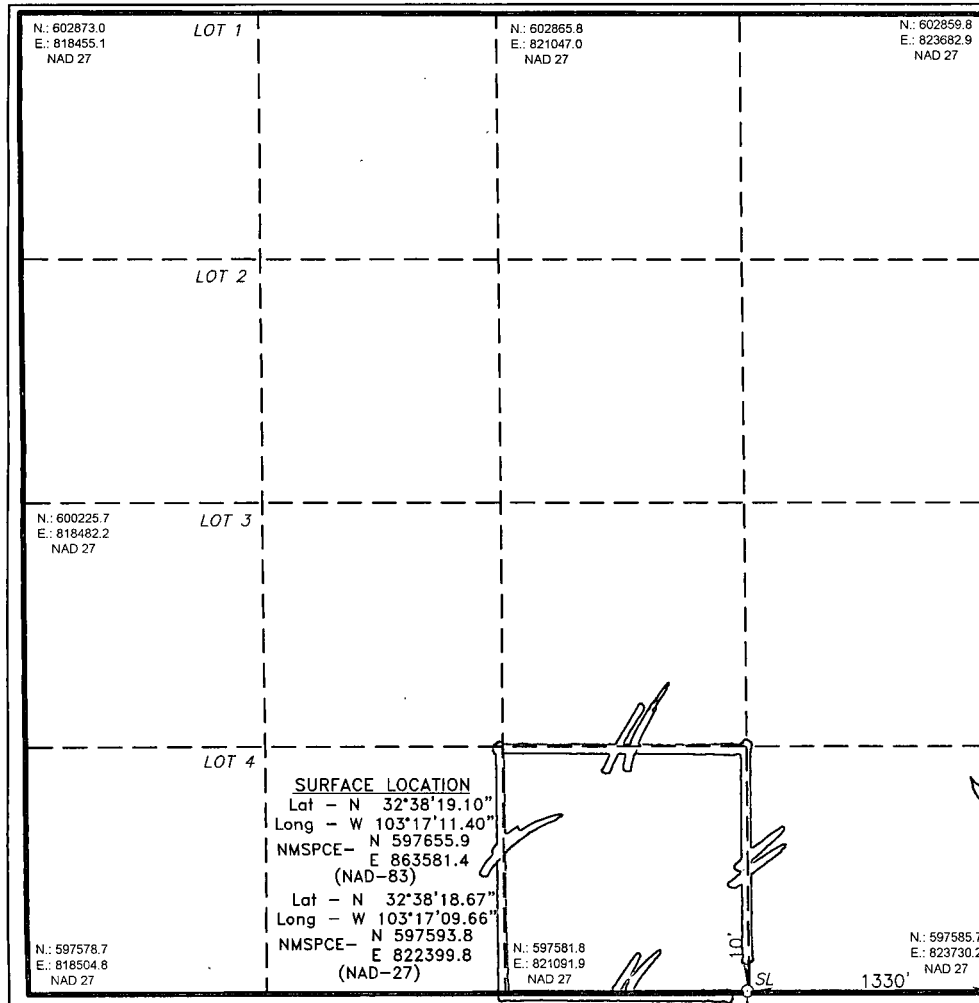
Surface Location

| UL or lot No. | Section | Township | Range | Lot Idn | Feet from the | North/South line | Feet from the | East/West line | County |
|---------------|---------|----------|-------|---------|---------------|------------------|---------------|----------------|--------|
| 0 | 19 | 19 S | 37 E | | 10 | SOUTH | 1330 | EAST | LEA |

Bottom Hole Location If Different From Surface

| UL or lot No. | Section | Township | Range | Lot Idn | Feet from the | North/South line | Feet from the | East/West line | County |
|------------------------------|-----------------|--------------------|-----------|---------|---------------|------------------|---------------|----------------|--------|
| | | | | | | | | | |
| Dedicated Acres 40 | Joint or Infill | Consolidation Code | Order No. | | | | | | |

NO ALLOWABLE WILL BE ASSIGNED TO THIS COMPLETION UNTIL ALL INTERESTS HAVE BEEN CONSOLIDATED
OR A NON-STANDARD UNIT HAS BEEN APPROVED BY THE DIVISION



OPERATOR CERTIFICATION

I hereby certify that the information contained herein is true and complete to the best of my knowledge and belief, and that this organization either owns a working interest or unleased mineral interest in the land including the proposed bottom hole location or has a right to drill this well at this location pursuant to a contract with an owner of such a mineral or working interest, or to a voluntary pooling agreement or a compulsory pooling order heretofore entered by the division.

Signature *[Signature]* **Date** **10/9/13**
Printed Name **Michael J. Connor**
Email Address **michael.j.connor@apachecorp.com**

SURVEYOR CERTIFICATION

I hereby certify that the well location shown on this plat was plotted from field notes of actual surveys made by me or under my supervision, and that the same is true and correct to the best of my belief.

DATE SURVEYED **JANUARY 2013**

Signature *[Signature]* **Seal** **Professional Surveyor** **7977**

Certificate No. **Gary L. Jones -7977**

BASIN SURVEYS **27978**

MAR 27 2014