

HOBBS OCD

APR 22 2014

District I

1625 N. French Dr., Hobbs, NM 88240
Phone: (575) 393-6161 Fax: (575) 393-0770

District II

811 S. First St., Artesia, NM 88210
Phone: (575) 748-1283 Fax: (575) 748-9720

District III

1000 Rio Brazos Road, Aztec, NM 87410
Phone: (505) 334-6178 Fax: (505) 334-6170

District IV

1220 S. St. Francis Dr., Santa Fe, NM 87505
Phone: (505) 476-3460 Fax: (505) 476-3462

State of New Mexico

RECEIVED

Energy, Minerals & Natural Resources Department

OIL CONSERVATION DIVISION

1220 South St. Francis Dr.

Santa Fe, NM 87505

Form C-102

Revised August 1, 2011

Submit one copy to appropriate

District Office

☐ AMENDED REPORT

WELL LOCATION AND ACREAGE DEDICATION PLAT

¹ API Number 30-025-41806	² Pool Code 5695	³ Pool Name BILBREY BASIN	⁴ Property Code 3H
⁵ Property Name BILBREY 33 FED COM		⁶ Well Number 3H	
⁷ OGRID No. 6137	⁸ Operator Name DEVON ENERGY PRODUCTION COMPANY, L.P.		⁹ Elevation 3729.6

" Surface Location

U/L or lot no.	Section	Township	Range	Lot Idn	Feet from the	North/South line	Feet from the	East/West line	County
J	33	21 S	32 E		2600	SOUTH	1350	EAST	LEA

" Bottom Hole Location If Different From Surface

U/L or lot no.	Section	Township	Range	Lot Idn	Feet from the	North/South line	Feet from the	East/West line	County
B	28	21 S	32 E		330	NORTH	1980	EAST	LEA

¹² Dedicated Acres 240	¹³ Joint or Infill	¹⁴ Consolidation Code	¹⁵ Order No.
---	-------------------------------	----------------------------------	-------------------------

No allowable will be assigned to this completion until all interests have been consolidated or a non-standard unit has been approved by the division.

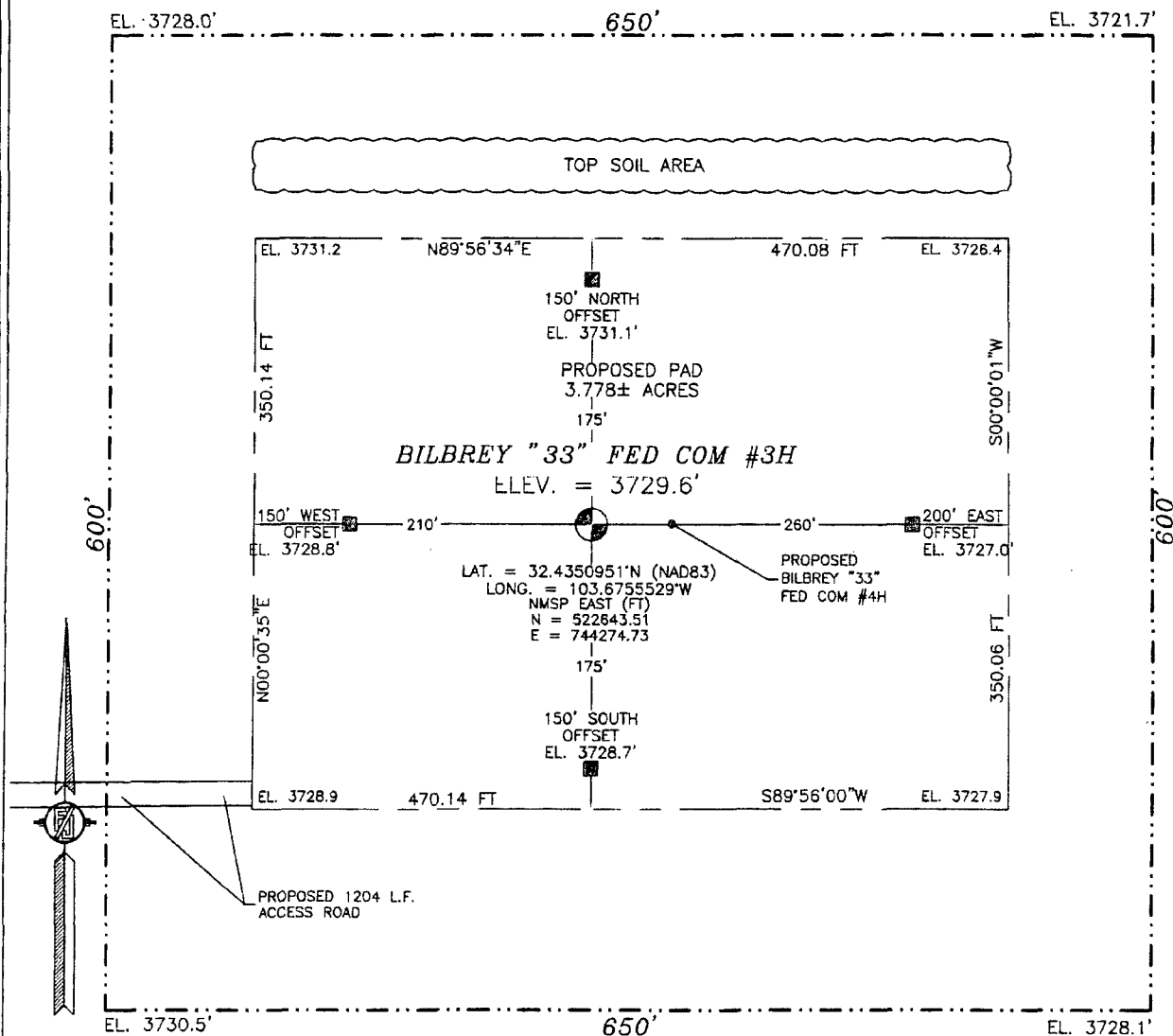
<p>NW CORNER SEC. 28 LAT. = 32.4569393°N LONG. = 103.6882813°W NMSP EAST (FT) N = 530566.55 E = 740299.70</p> <p>W/4 CORNER SEC. 28 LAT. = 32.4496894°N LONG. = 103.6882898°W NMSP EAST (FT) N = 527928.98 E = 740313.03</p> <p>SECTION CORNER LAT. = 32.4424274°N LONG. = 103.6882910°W NMSP EAST (FT) N = 525287.05 E = 740328.62</p> <p>SW CORNER SEC. 33 LAT. = 32.4279074°N LONG. = 103.6883007°W NMSP EAST (FT) N = 520004.58 E = 740357.53</p>		<p>N/4 CORNER SEC. 28 LAT. = 32.4569769°N LONG. = 103.6797333°W NMSP EAST (FT) N = 530596.27 E = 742935.26</p> <p>QUARTER CORNER LAT. = 32.4424528°N LONG. = 103.6797451°W NMSP EAST (FT) N = 525312.30 E = 742954.96</p> <p>S/4 CORNER SEC. 33 LAT. = 32.4279344°N LONG. = 103.6797450°W NMSP EAST (FT) N = 520030.45 E = 742997.32</p>		<p>NE CORNER SEC. 28 LAT. = 32.4570252°N LONG. = 103.6711735°W NMSP EAST (FT) N = 530630.10 E = 745576.37</p> <p>E/4 CORNER SEC. 28 LAT. = 32.4497418°N LONG. = 103.6711715°W NMSP EAST (FT) N = 527980.38 E = 745593.45</p> <p>SECTION CORNER LAT. = 32.4424830°N LONG. = 103.6711771°W NMSP EAST (FT) N = 525339.59 E = 745608.11</p> <p>E/4 CORNER SEC. 33 LAT. = 32.4352241°N LONG. = 103.6711870°W NMSP EAST (FT) N = 522698.76 E = 745624.19</p> <p>SE CORNER SEC. 33 LAT. = 32.4279661°N LONG. = 103.6711810°W NMSP EAST (FT) N = 520058.28 E = 745639.63</p>	
<p>BILBREY "33" FED COM #3H ELEV. = 3729.6' LAT. = 32.4350951°N (NAD83) LONG. = 103.6755529°W NMSP EAST (FT) N = 522643.51 E = 744274.73</p> <p>17 OPERATOR CERTIFICATION I hereby certify that the information contained herein is true and complete to the best of my knowledge and belief, and that this organization either owns a working interest or unleased mineral interest in the land including the proposed bottom hole location or has a right to drill this well at this location pursuant to a contract with an owner of such a mineral or working interest, or to a voluntary pooling agreement or a compulsory pooling order heretofore entered by the division. Signature: <i>D. A.</i> Date: 1/15/2014 Printed Name: David Cook Regulatory Specialist E-mail Address: david.cook@dvn.com</p> <p>18 SURVEYOR CERTIFICATION I hereby certify that the well location shown on this plat was plotted from field notes of actual surveys made by me or under my supervision, and that the same is true and correct to the best of my belief. AUGUST 19, 2013 Date of Survey: <i>[Signature]</i> Signature and Seal of Professional Surveyor: <i>[Signature]</i> Certificate Number: FIRM 1001 AND 11111111. PLS 12797 SURVEY NO. 2204</p>					

PP: 2600 FSL & 1350 FEL; 33-21S-32E

APR 28 2014

SECTION 33, TOWNSHIP 21 SOUTH, RANGE 32 EAST, N.M.P.M.
LEA COUNTY, STATE OF NEW MEXICO
SITE MAP

NOTE: LATITUDE AND LONGITUDE COORDINATES ARE SHOWN USING THE NORTH AMERICAN DATUM OF 1983 (NAD83). LISTED NEW MEXICO STATE PLANE EAST COORDINATES ARE GRID (NAD83). BASIS OF BEARING AND DISTANCES USED ARE NEW MEXICO STATE PLANE EAST COORDINATES MODIFIED TO THE SURFACE.



010 50 100 200

SCALE 1" = 100'

DIRECTIONS TO LOCATION

FROM THE INTERSECTION OF HWY 62-180 AND CAMPBELL ROAD GO SOUTH ON CAMPBELL ROAD APPROX. 8.9 MILES TO LEASE ROAD ON LEFT (EAST) TURN EAST ON LEASE ROAD GO APPROX. 0.7 MILES ROAD TURNS LEFT (NORTH) GO NORTH APPROX. 0.5 MILES ROAD TURNS RIGHT (EAST) GO EAST APPROX. 1.9 MILES ROAD TURNS RIGHT (SOUTH) GO SOUTH APPROX. 0.1 MILES TO ROAD LATH WITH WHITE AND RED FLAGGING ON EAST SIDE OF ROAD FOLLOW ROAD LATHS (EAST) APPROX 0.21 MILES TO LOCATION

DEVON ENERGY PRODUCTION COMPANY, L.P.

BILBREY "33" FED COM #3H

LOCATED 2600 FT. FROM THE SOUTH LINE
AND 1350 FT. FROM THE EAST LINE OF
SECTION 33, TOWNSHIP 21 SOUTH,
RANGE 32 EAST, N.M.P.M.

LEA COUNTY, STATE OF NEW MEXICO

AUGUST 19, 2013

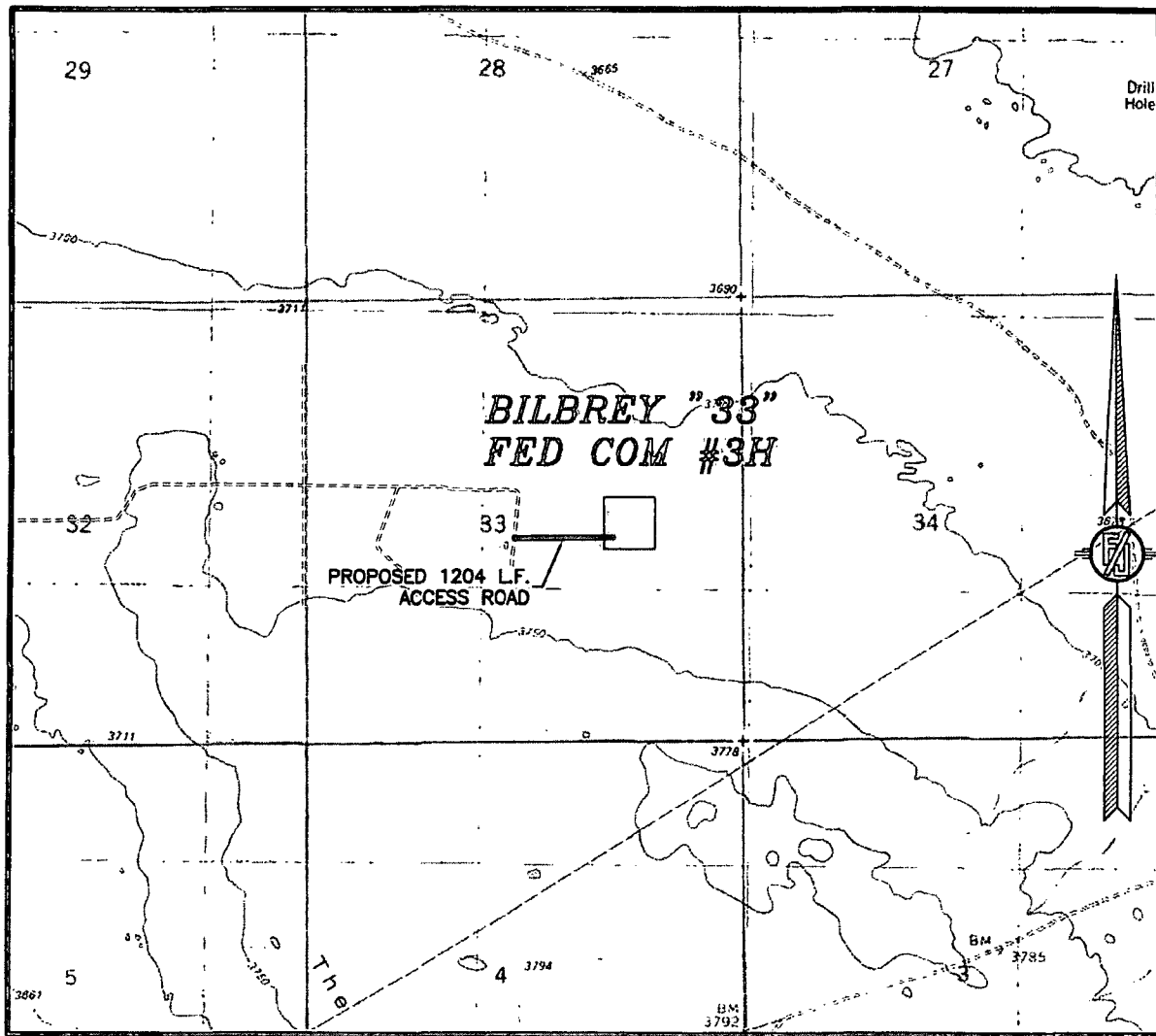
SURVEY NO. 2204

MADRON SURVEYING, INC.

301 SOUTH CANAL
(575) 234-3341

CARLSBAD, NEW MEXICO

SECTION 33, TOWNSHIP 21 SOUTH, RANGE 32 EAST, N.M.P.M.
LEA COUNTY, STATE OF NEW MEXICO
LOCATION VERIFICATION MAP



USGS QUAD MAP:
THE DIVIDE

NOT TO SCALE

DEVON ENERGY PRODUCTION COMPANY, L.P.

BILBREY "33" FED COM #3H

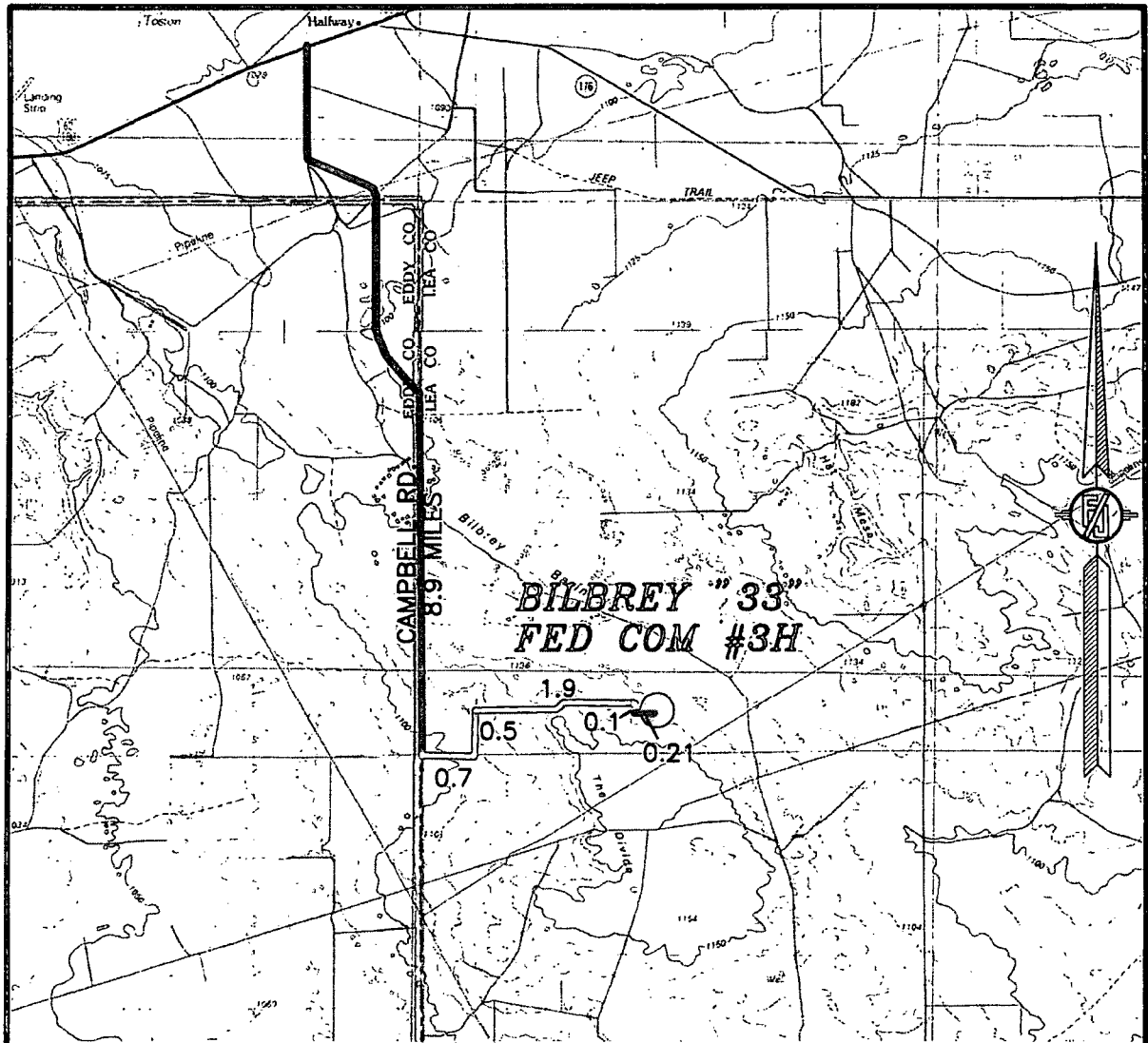
LOCATED 2600 FT. FROM THE SOUTH LINE
AND 1350 FT. FROM THE EAST LINE OF
SECTION 33, TOWNSHIP 21 SOUTH,
RANGE 32 EAST, N.M.P.M.
LEA COUNTY, STATE OF NEW MEXICO

AUGUST 19, 2013

SURVEY NO. 2204

MADRON SURVEYING, INC. 301 SOUTH CANAL (575) 234-3341 CARLSBAD, NEW MEXICO

SECTION 33, TOWNSHIP 21 SOUTH, RANGE 32 EAST, N.M.P.M.
LEA COUNTY, STATE OF NEW MEXICO
VICINITY MAP



DISTANCES IN MILES

NOT TO SCALE

DIRECTIONS TO LOCATION

FROM THE INTERSECTION OF HWY 62-180 AND CAMPBELL ROAD GO SOUTH ON CAMPBELL ROAD APPROX. 8.9 MILES TO LEASE ROAD ON LEFT (EAST) TURN EAST ON LEASE ROAD GO APPROX. 0.7 MILES ROAD TURNS LEFT (NORTH) GO NORTH APPROX. 0.5 MILES ROAD TURNS RIGHT (EAST) GO EAST APPROX. 1.9 MILES ROAD TURNS RIGHT (SOUTH) GO SOUTH APPROX. 0.1 MILES TO ROAD LATH WITH WHITE AND RED FLAGGING ON EAST SIDE OF ROAD FOLLOW ROAD LATHS (EAST) APPROX 0.21 MILES TO LOCATION

DEVON ENERGY PRODUCTION COMPANY, L.P.

BILBREY "33" FED COM #3H

LOCATED 2600 FT. FROM THE SOUTH LINE

AND 1350 FT. FROM THE EAST LINE OF

SECTION 33, TOWNSHIP 21 SOUTH,

RANGE 32 EAST, N.M.P.M.

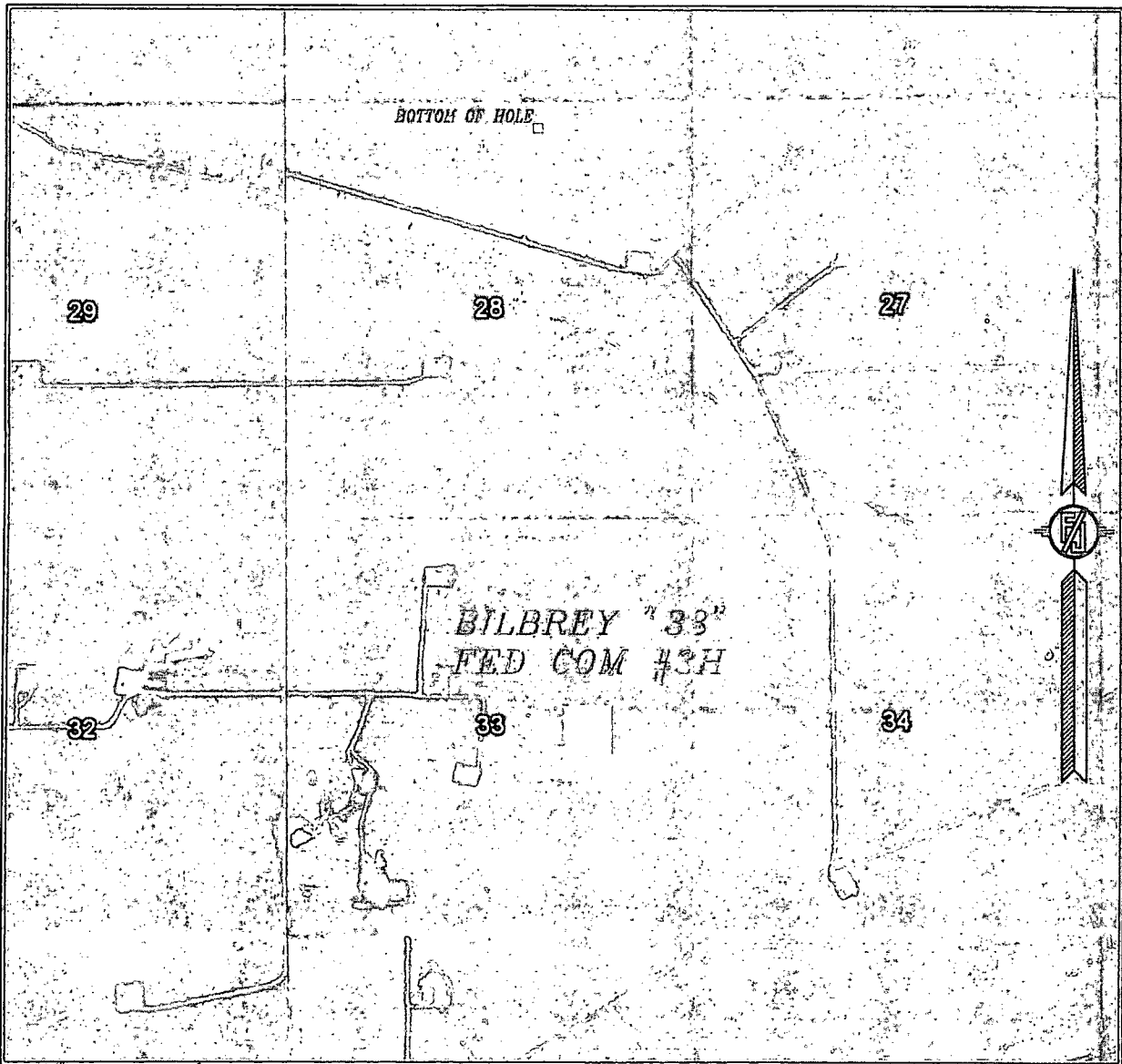
LEA COUNTY, STATE OF NEW MEXICO

AUGUST 19, 2013

SURVEY NO. 2204

MADRON SURVEYING, INC. 301 SOUTH CANAL (575) 234-3341 CARLSBAD, NEW MEXICO

SECTION 33, TOWNSHIP 21 SOUTH, RANGE 32 EAST, N.M.P.M.
LEA COUNTY, STATE OF NEW MEXICO
AERIAL PHOTO



NOT TO SCALE
AERIAL PHOTO:
GOOGLE EARTH
MARCH 2012

DEVON ENERGY PRODUCTION COMPANY, L.P.

BILBREY "33" FED COM #3H

LOCATED 2600 FT. FROM THE SOUTH LINE
AND 1350 FT. FROM THE EAST LINE OF
SECTION 33, TOWNSHIP 21 SOUTH,
RANGE 32 EAST, N.M.P.M.
LEA COUNTY, STATE OF NEW MEXICO

AUGUST 19, 2013

SURVEY NO. 2204

MADRON SURVEYING, INC. 301 SOUTH CANAL (575) 234-3341 CARLSBAD, NEW MEXICO

