

State of New Mexico

MAY 09 2014

DISTRICT I

1625 N. FRENCH DR., HOBBS, NM 88240

Energy, Minerals and Natural Resources Department

Form C-102

Revised October 12, 2005

DISTRICT II

1301 W. GRAND AVENUE, ARTESIA, NM 88210

OIL CONSERVATION DIVISION

1220 SOUTH ST. FRANCIS DR.
Santa Fe, New Mexico 87505

RECEIVED

Submit to Appropriate District Office

State Lease - 4 Copies

Fee Lease - 3 Copies

DISTRICT III

1000 Rio Brazos Rd., Aztec, NM 87410

DISTRICT IV

1220 S. ST. FRANCIS DR., SANTA FE, NM 87505

WELL LOCATION AND ACREAGE DEDICATION PLAT

✓ AMENDED REPORT

API Number 30-025-41838	Pool Code 50350	Pool Name Pennon Mellet Brachburg
Property Code 2690	Property Name W.T. MCCOMACK	Well Number 27
OGRID No. 4323	Operator Name CHEVRON USA INC.	Elevation 3459'

Surface Location

UL or lot No.	Section	Township	Range	Lot Idn	Feet from the	North/South line	Feet from the	East/West line	County
A	32	21-S	37-E		1150	NORTH	330	EAST	LEA

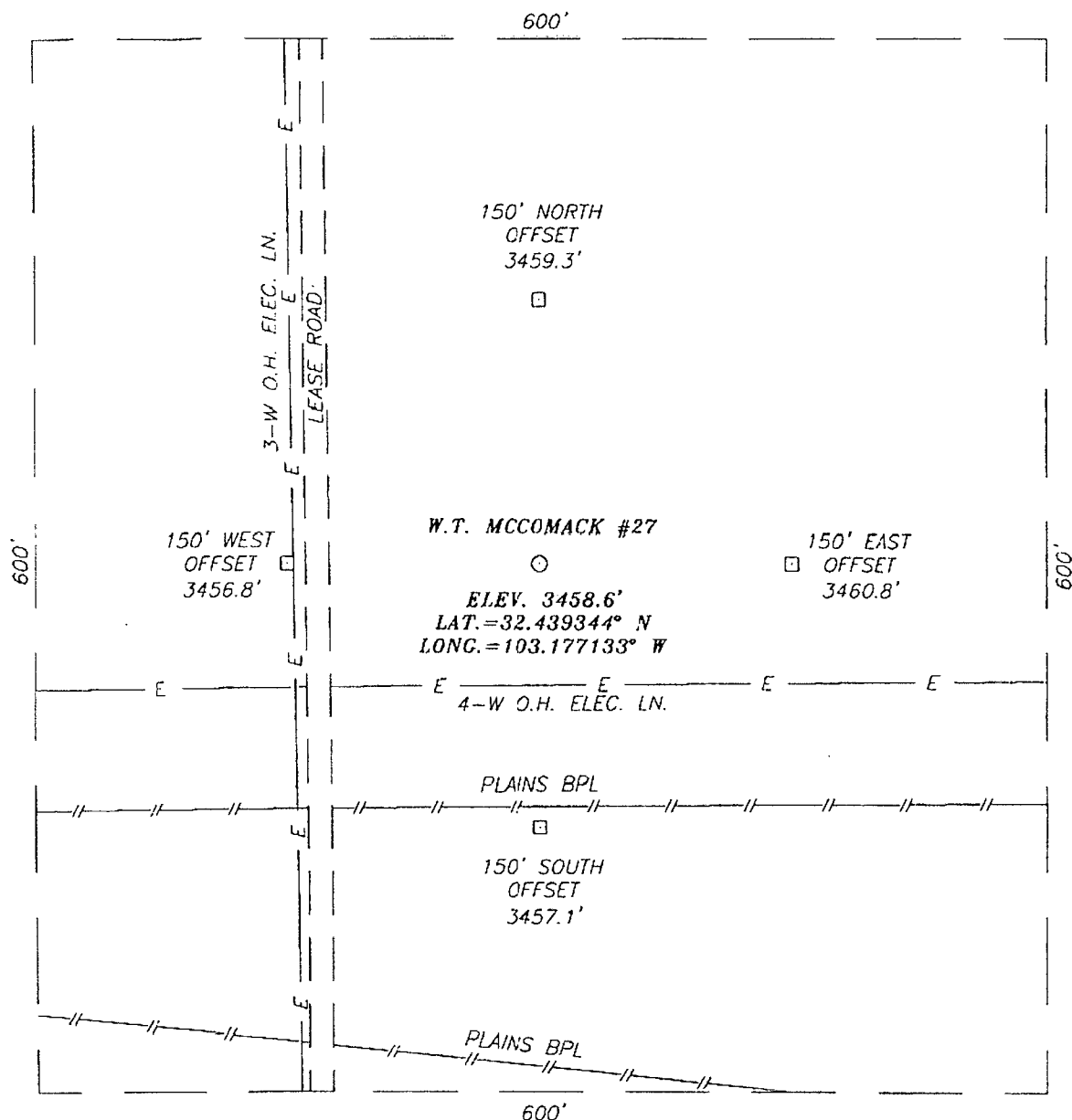
Bottom Hole Location If Different From Surface

UL or lot No.	Section	Township	Range	Lot Idn	Feet from the	North/South line	Feet from the	East/West line	County
Dedicated Acres 40	Joint or Infill	Consolidation Code	Order No. NSL-0014						

NO ALLOWABLE WILL BE ASSIGNED TO THIS COMPLETION UNTIL ALL INTERESTS HAVE BEEN CONSOLIDATED
OR A NON-STANDARD UNIT HAS BEEN APPROVED BY THE DIVISION

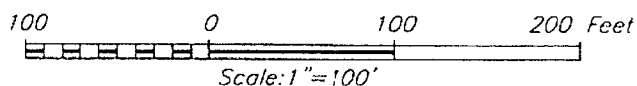
	OPERATOR CERTIFICATION I hereby certify that the information herein is true and complete to the best of my knowledge and belief, and that this organization either owns a working interest or unleased mineral interest in the land including the proposed bottom hole location or has a right to drill this well at this location pursuant to a contract with an owner of such mineral or working interest, or to a voluntary pooling agreement or a compulsory pooling order heretofore entered by the division. Signature: <i>Denise Pinkerton</i> Date: 05/08/2014 Printed Name: Denise Pinkerton
	SURVEYOR CERTIFICATION I hereby certify that the well location shown on this plat was plotted from field notes of actual surveys made by me or under my supervision, and that the same is true and correct to the best of my belief. DECEMBER 17, 2008 Date Surveyed: 12/22/08 Signature & Seal of Professional Surveyor: <i>Ronald J. Eidson</i> Certificate No. GARY EIDSON 12641 RONALD J. EIDSON 9239
	GEODETIC COORDINATES NAD 27 NME Y=525478.1 N X=856706.8 E LAT.=32.439345° N LONG.=103.177133° W
	MAY 14 2014

SECTION 32, TOWNSHIP 21 SOUTH, RANGE 37 EAST, N.M.P.M.,
LEA COUNTY, NEW MEXICO



DIRECTIONS TO LOCATION

FROM THE INTERSECTION OF TEXAS AVENUE AND
LEGION ROAD, GO WEST ON TEXAS AVENUE
APPROX. 0.1 MILE. TURN RIGHT AND GO NORTH
APPROX. 0.3 MILES. THIS LOCATION IS APPROX.
100 FEET EAST OF LEASE ROAD.



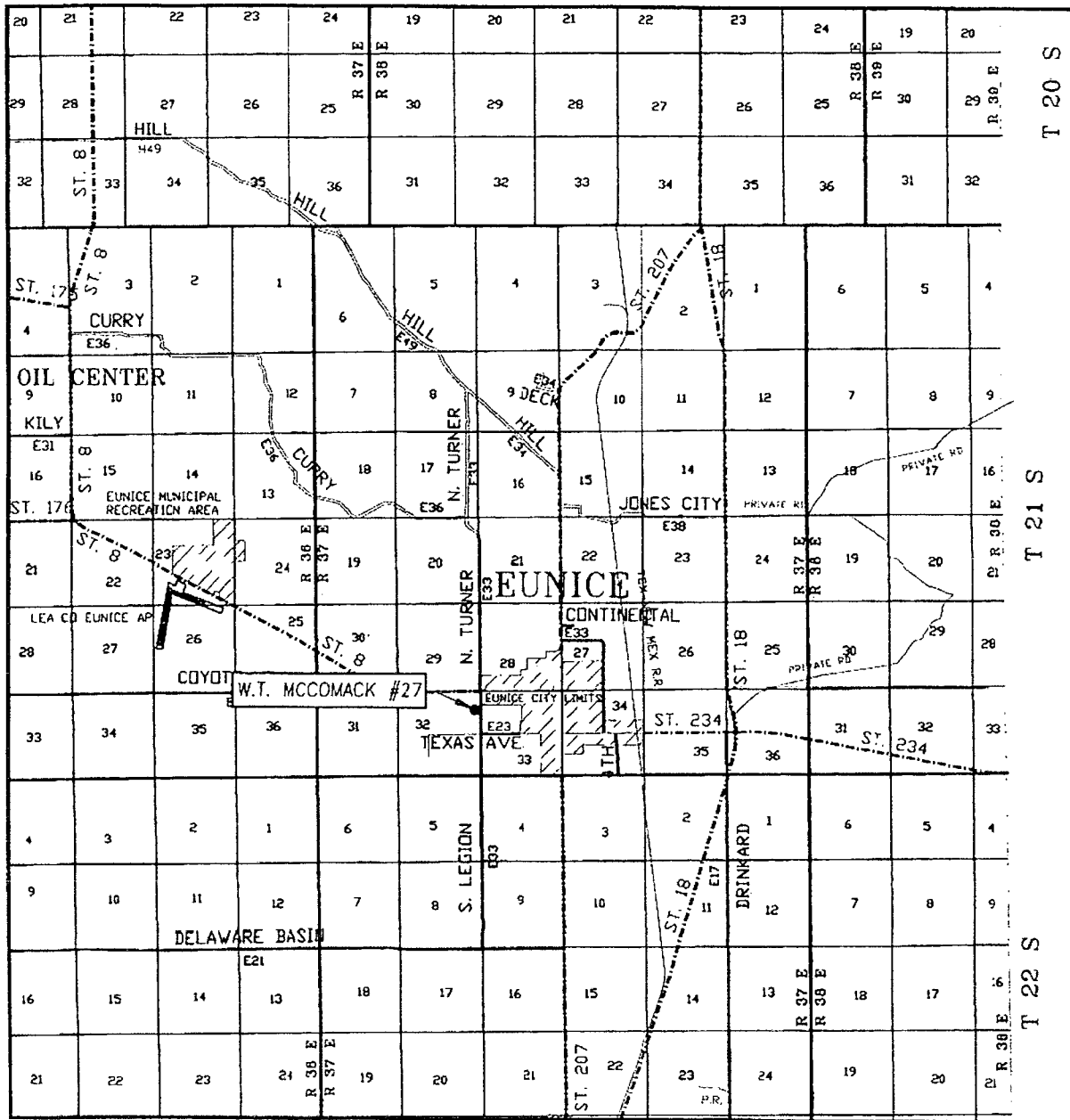
CHEVRON USA INC.

W.T. MCCOMACK #27 WELL
LOCATED 1150 FEET FROM THE NORTH LINE
AND 330 FEET FROM THE EAST LINE OF SECTION 32,
TOWNSHIP 21 SOUTH, RANGE 37 EAST, N.M.P.M.,
LEA COUNTY, NEW MEXICO.

Survey Date: 12/17/08	Sheet 1 of 1 Sheets
W.O. Number: 08.11.2035	Dr By: AR
Date: 12/19/08	Rev 1: N/A
Disk:	08112035
	Scale: 1"=100'

PROVIDING SURVEYING SERVICES
SINCE 1946
JOHN WEST SURVEYING COMPANY
412 N. DAL PASO
HOBBS, N.M. 88240
(575) 393-3117

VICINITY MAP



SCALE: 1" = 2 MILES

SEC. 32 TWP. 21-S RGE. 37-E

SURVEY N.M.P.M.

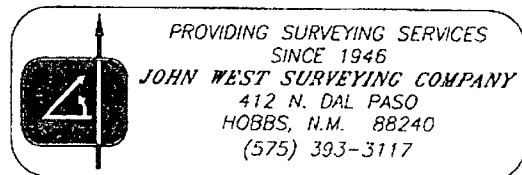
COUNTY LEA STATE NEW MEXICO

DESCRIPTION 1150' FNL & 330' FEL

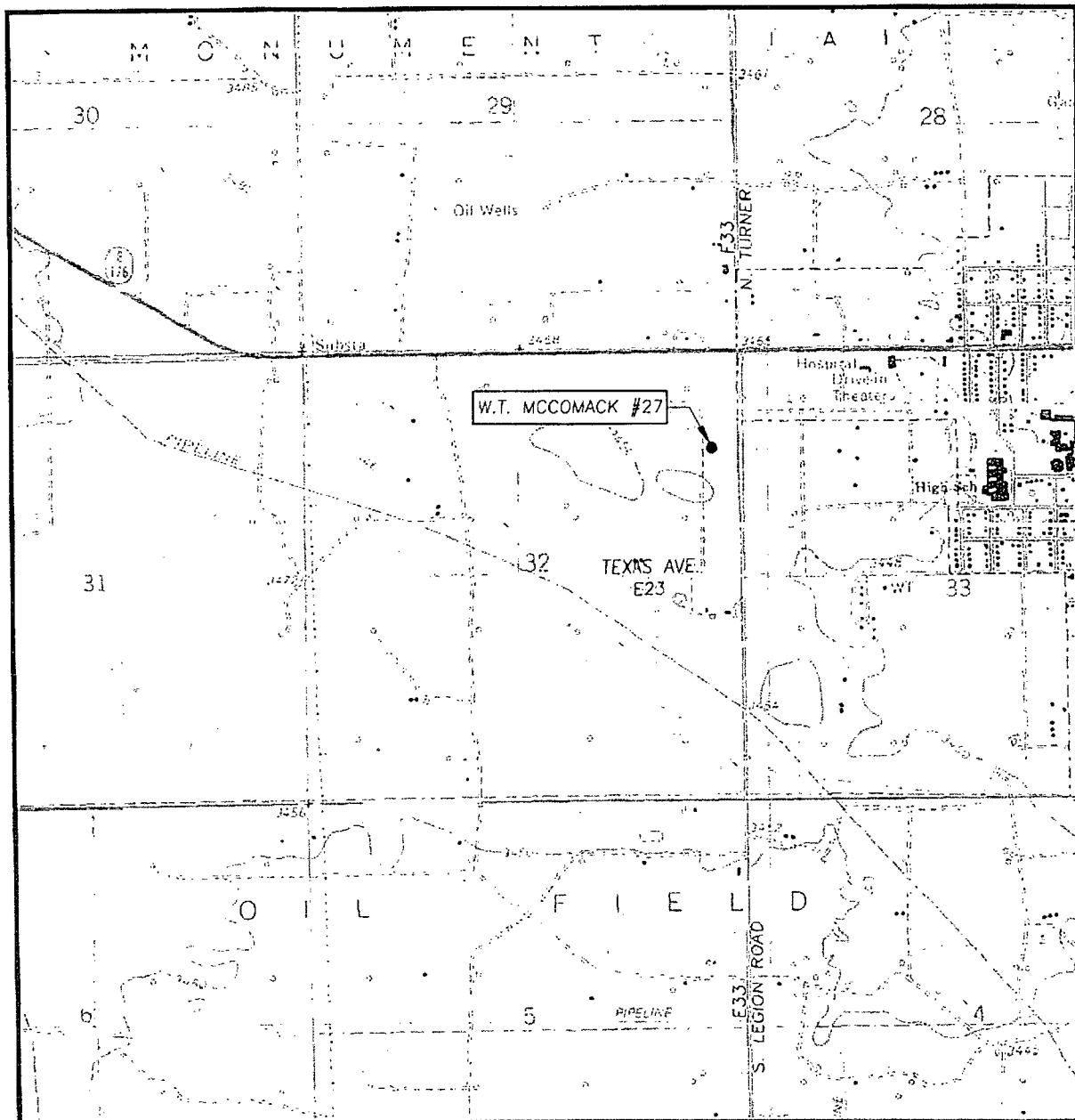
ELEVATION 3459'

OPERATOR CHEVRON USA INC.

LEASE W.T. MCCOMACK



LOCATION VERIFICATION MAP



SCALE: 1" = 2000'

CONTOUR INTERVAL:
EUNICE, N.M. - 10'

SEC. 32 TWP. 21-S RGE. 37-E

SURVEY _____ N.M.P.M.

COUNTY LEA STATE NEW MEXICO

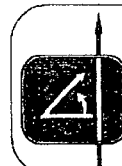
DESCRIPTION 1150' FNL & 330' FEL

ELEVATION 3459'

OPERATOR CHEVRON USA INC.

LEASE W.T. MCCOMACK

U.S.G.S. TOPOGRAPHIC MAP
EUNICE, N.M.



PROVIDING SURVEYING SERVICES
SINCE 1946
JOHN WEST SURVEYING COMPANY
412 N. DAL PASO
HOBBS, N.M. 88240
(575) 393-3117